

# RNAV (GPS) RWY 21

AKIAK (AKI) (PFAK)

|                        |   |
|------------------------|---|
| APP CRS<br><b>211°</b> | Rwy Idg <b>3200</b><br>TDZE <b>40</b><br>Apt Elev <b>40</b> |
|------------------------|---|

RNP APCH.

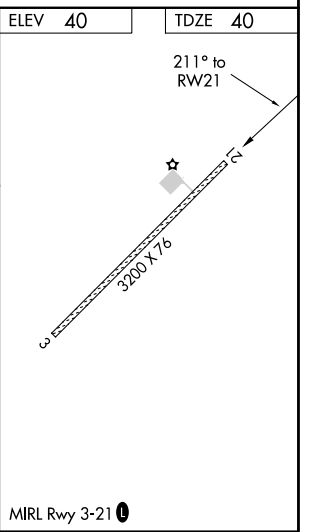
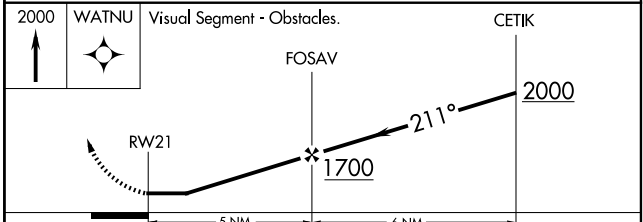
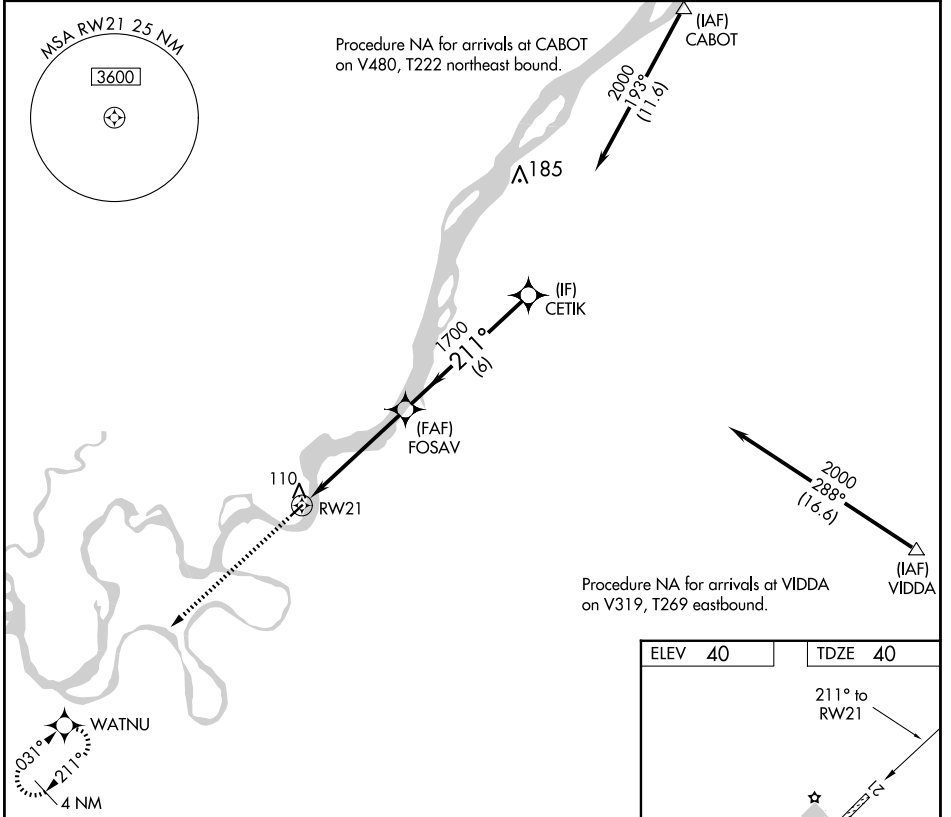
**▼** Procedure NA at night. Use Bethel altimeter setting.  
**▲** NA Rwy 21 helicopter visibility reduction below 1 SM NA.

MISSED APPROACH: Climb to 2000 direct WATNU and hold.

BET/PABE ASOS  
**135.45**

ANCHORAGE CENTER  
**125.2 372.0**

CTAF  
**122.9 0**



| CATEGORY | A                    | B                    | C | D  |
|----------|----------------------|----------------------|---|----|
| RNAV MDA | 600-1                | 560 (600-1)          |   | NA |
| CIRCLING | 600-1<br>560 (600-1) | 620-1<br>580 (600-1) |   | NA |

AK, 17 APR 2025 to 12 JUN 2025

AK, 17 APR 2025 to 12 JUN 2025