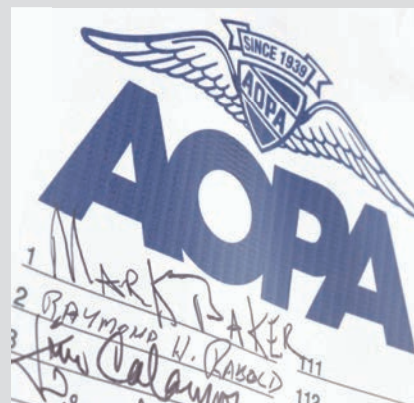


# AOPA

# FLY IN

Indianapolis, IN



## PILOT INFORMATION PACKET

Including Special Flight Procedures

Indianapolis, IN | May 31, 2014



## **AOPA FLY-IN HOST FBO:**

The AOPA Fly-in Host FBO at Indianapolis Regional Airport is Indy Jet. We thank them for their support, enthusiasm, and participation in the AOPA Fly-in at Indianapolis Regional Airport.



### **Indy Jet**

Indianapolis Regional Airport (KMQJ)

3867 North Aviation Way

Greenfield, IN 46140

Hours of operation: 6:00AM - 10:00PM (local)

Friday May 30 & Saturday May 31

Phone: 317-335-3371

Fax: 317-335-2073

After hours contact: 317-335-3371

Email: [info@indyjet.net](mailto:info@indyjet.net)

**To encourage arrivals on the day prior to the fly-in, Indy Jet will be offering a special 25 cent per gallon discount for aircraft that arrive and order fuel on Friday, May 30 only.**

## **CAMPING**

Camping will be permitted at Indianapolis Regional Airport on Friday and Saturday, May 30-31. Space is limited and will be available on a first-come, first-served basis. There is no charge. If you plan to camp, **you must RSVP** by sending an email to [events@aopa.org](mailto:events@aopa.org) and put "Camping at MQJ" in the subject line. We will send you a confirmation email with additional information including camping guidelines.

## **AFTER-HOURS DEPARTURES**

If you will be departing after the FBO's normal operating hours please contact the main number at Indy Jet. An after-hours callout is subject to an additional fee.

## **PARKING AND SERVICE DETAILS**

Fuel/oil orders will be taken at the time your aircraft is parked. If you need either, please make sure to make the request at that time. Orders made at a later time might delay your departure. Credit card information will be requested at the time the order is placed.

## **DTC FLIGHT PLANNING**

Check weather and file your flight plan with DTC DUAT at [www.duat.com](http://www.duat.com), the official weather sponsor of AOPA's Regional Fly-Ins.

## **CHOCKS AND TIE DOWNS**

Wood chocks will be available in limited supply so we highly recommend that you bring your own. Tie down hooks are scattered on the ramp and parking on tie down spaces is unlikely. It is recommended that you bring tiedowns and anchors for any additional aircraft securing needs.

## **RENTAL CAR AVAILABILITY**



Phone: 317-467-2565

## RELIEVER AIRPORT OPTION TO AVOID HIGH DENSITY TRAFFIC AT INDIANAPOLIS REGIONAL AIRPORT



### Indianapolis Airport Authority

**INDIANAPOLIS METROPOLITAN AIRPORT (KUMP):** Located 8 nautical miles northwest of Indianapolis Regional Airport and is approximately a 25 minute drive to KMQJ. Indianapolis Metropolitan Airport has one hard surface runway. 15/33 is 3848 X 100. The airspace is Class G.

In the event that Fly-in parking reaches capacity at Indianapolis Regional Airport, Indianapolis Approach might recommend Indianapolis Metropolitan Airport as an alternate. Complimentary ground transportation between KUMP and KMQJ will be provided by AOPA. Rental cars are also available through Enterprise at 317-913-6768.

**AOPA complimentary ground transportation will run Saturday, May 31 from 8:00 AM–6:00 PM; departing every 30 minutes on the hour and half hour.**

### OTHER AREA AIRPORTS

There are several public use airports that are within an hour drive of Indianapolis Regional Airport. You might elect to use one of these airports in the event that Indianapolis Regional Airport aircraft parking reaches capacity. Rental cars are also available at many of these airports. Please contact the airport directly for more information.

**INDIANAPOLIS EXECUTIVE AIRPORT (KTYQ)** is located 19 nautical miles northwest of Indianapolis Regional Airport and is approximately a 45 minute drive to KMQJ. Indianapolis Executive Airport has one hard surface runway. 18/36 is 5500 X 100. The airspace is Class G. Rental cars are available through Enterprise at 317-867-3580.

**GREENWOOD MUNICIPAL AIRPORT (KHFY)** is located 15 miles southwest of Indianapolis Regional Airport and is approximately a 30 minute drive to KMQJ. Greenwood Municipal Airport has one hard surface runway. 01/19 is 5100 X 75. The airspace is Class G. Caution: Indianapolis Class C airspace just west of airport. Call airport for rental car availability. 317-881-0887.

**SHELBYVILLE MUNICIPAL AIRPORT (KGEZ)** is located 16 miles southeast of Indianapolis Regional Airport and is approximately a 36 minute drive to KMQJ. Shelbyville Municipal Airport has one hard surface runway and one grass runway. Hard surface: 01/19 is 5000 X 100. Grass surface: 09/27 is 2671 X 190. The airspace is Class G. Rental cars are available through Enterprise at 317-398-9898.

**ANDERSON MUNICIPAL-DARLINGTON FIELD (KAID)** is located 20 miles northeast of Indianapolis Regional Airport and is approximately a 40 minute drive to KMQJ. Anderson Municipal-Darlington Field has two hard surface runways. 12/30 is 5400 X 100. 18/36 is 3400 X 75. The airspace is Class D. Rental cars are available through Enterprise at 765-640-0000.

**NEW CASTLE HENRY-COUNTY AIRPORT (KUWL)** is 26 miles east of Indianapolis Regional Airport and is approximately a 41 minute drive to KMQJ. New Castle-Henry County Airport has one hard surface runway. 09/27 is 4000 X 65. The airspace is Class G. Rental cars are available through Enterprise at 765-529-0450.

**INDIANAPOLIS INTERNATIONAL AIRPORT (KIND)** is located 19 miles southwest of Indianapolis Regional Airport and is approximately a 35 minute drive to KMQJ. Indianapolis International Airport has three hard surface runways. 05L/23R is 11200 X 150. 05R/23L is 10000 X 150. 14/32 is 7280 X 150. The airspace is Class C continuous. Rental cars are available through Enterprise at 317-247-7555.

# **AIRCRAFT OWNERS AND PILOTS ASSOCIATION (AOPA) FLY-IN | INDIANAPOLIS, IN EFFECTIVE 6:00 AM LOCAL FRIDAY, MAY 30, 2014 UNTIL 8:00 PM LOCAL SATURDAY, MAY 31, 2014 TEMPORARY VFR PROCEDURES**

---

Specific procedures contained with this NOTAM may be revised or unavailable at the time of the event. Users are encouraged to check NOTAMs frequently to verify they possess the most current revisions. This NOTAM does not supersede restrictions pertaining to the use of airspace contained in FDC NOTAMS.

In anticipation of a larger than normal number of aircraft operating to and from the Indianapolis Regional Airport (KMQJ) in conjunction with the AOPA Fly-in, the following procedures will be used to enhance safety and minimize delays.

## **TRAFFIC MANAGEMENT**

Traffic management initiatives will be utilized when arrival rates exceed airport capacity. Pilots should be prepared for potential holding, reroutes or EDCT's (Expect Departure Clearance Time) that may be issued for domestic IFR arrivals to Indianapolis Regional Airport.

## **IMPORTANT INFORMATION**

Pilots are urged to review all applicable NOTAMs and arrival/departure procedures prior to conducting flight to Indianapolis Regional Airport. IFR flight plans should be filed at least 6 hours prior to proposed departure time.

## **LOCAL TRAINING AND PRACTICE APPROACHES**

Local traffic pattern, closed traffic training, and practice instrument approaches will not be allowed at Indianapolis Regional Airport during the AOPA Fly-in.

## **CAUTIONS**

Indianapolis Class C airspace southwest of Indianapolis Regional Airport

Anderson Regional Class D airspace northeast of Indianapolis Regional Airport

Delaware County Regional Class D airspace near Muncie

Columbus Municipal Class D airspace southeast of Indianapolis

Cincinnati/Northern Kentucky Class B airspace southeast of Indianapolis Regional Airport

Numerous Special Use Airspace including Restricted Airspace in the area around Indianapolis Regional Airport

## **AEROBATIC DEMONSTRATION**

There will be a 10-15 minute aerobatic demonstration at approximately 12:45 PM local on Saturday, May 31 during the AOPA Fly-in. Arrivals and departures will be stopped for the duration of the demonstration. Please plan accordingly.

## **INDIANAPOLIS REGIONAL AIRPORT**

### **GENERAL INFORMATION**

**Parking Areas:** When operating in the parking areas, pilots are encouraged to be extra alert for taxiing aircraft, aircraft with engine(s) running, and vehicle/pedestrian traffic. Ground support personnel will be assisting aircraft to and from parking areas and run-up areas. For safety reasons, high RPM engine running is prohibited outside of designated run-up areas. Please review the parking map prior to landing and departure. This will brief you on the correct taxi routes.

**Vehicular Traffic:** Vehicles are not allowed on ramps except those belonging to airport operators and tenants, and exhibitors participating in the AOPA Indianapolis Fly-in.

**Pre-flight Planning:** Please ensure that you have reviewed the special flight information, departure procedures, and temporary taxi procedures prior to engine start. High traffic density is expected Saturday morning and afternoon. Consider arriving during off-peak hours.

### INDIANAPOLIS REGIONAL AIRPORT FREQUENCIES

INDIANAPOLIS REGIONAL AIRPORT	FREQUENCY
AWOS-3	124.175 (317-335-3037)
INDIANAPOLIS APPROACH/DEPARTURE	SEE ATTACHED GRAPHIC
INDIANAPOLIS CLEARANCE DELIVERY	119.25
CTAF	122.7

### VFR ARRIVALS FROM THE NORTH

Proceed toward the \*Prairie Creek Reservoir arriving at 3,500 feet MSL. If not already in communication with ATC, contact Indianapolis Approach on 124.65 prior to arriving at the Prairie Creek Reservoir. If unable to establish contact with ATC follow the procedure and continue inbound. Establish contact as soon as practical.

Be cautious. Stay alert for other aircraft in the vicinity. In the event traffic volume requires holding, be prepared to hold around the Prairie Creek Reservoir at 3,500 feet MSL, left turns, or as instructed by ATC. Proceed south toward the \*New Castle Henry County Airport (UWL). After overflying UWL, turn westbound and follow Interstate 70 toward Indianapolis. Switch to Indianapolis Regional CTAF on 122.7 when authorized by ATC or when arriving at the I70 Rest Area, 9 nautical miles

southeast of MQJ. Report inbound on the CTAF at the “Rest Area.” If runway 25 is in use at Indianapolis Regional, turn northwest toward the town of \*Maxwell after overflying the \*I70 rest area (see graphic). Report inbound on the CTAF when over “Maxwell.” From Maxwell, line up for a straight in approach to runway 25 at Indianapolis Regional.

If runway 7 is in use, **DO NOT TURN** northwest toward Maxwell at the rest area. Continue westbound along I70 toward Indianapolis for approximately another 12 nautical miles. This will put you on a **right downwind** for runway 7. Be prepared to turn **right base** for runway 7 when reaching a \*split (see graphic) in the road on I70 approximately 3 nautical miles west of Indianapolis Regional. Turn final at pilot’s discretion.

### VFR ARRIVALS FROM THE WEST

Proceed toward the \*Morse Reservoir arriving at 3,500 feet MSL. If not already in communication with ATC, contact Indianapolis Approach on 124.65 prior to arriving at the Morse Reservoir. If unable to establish contact with ATC follow the procedure and continue inbound. Establish contact as soon as practical.

Be cautious. Stay alert for other aircraft in the vicinity. In the event traffic volume requires holding, be prepared to hold around the Morse Reservoir at 3,500 feet MSL, left turns, or as instructed by ATC. Proceed southeast toward the \*Summit Lake Reservoir where you will merge with traffic arriving from the north. Proceed south toward the \*New Castle Henry County Airport (UWL). After overflying UWL, turn westbound and follow Interstate 70 toward Indianapolis. Switch to Indianapolis Regional CTAF on 122.7 when authorized by ATC or when arriving at the I70 Rest Area, 9 nautical miles southeast of MQJ. Report inbound on the CTAF at the “Rest Area.” If runway 25 is in use at Indianapolis Regional, turn northwest toward the town of \*Maxwell after overflying the \*I70 rest area (see graphic). Report inbound on the CTAF when over “Maxwell.” From Maxwell, line up for a straight in approach to runway 25 at Indianapolis Regional.

If runway 7 is in use, **DO NOT TURN** northwest toward Maxwell at the rest area. Continue westbound along I70 toward Indianapolis for approximately another 12 nautical miles. This will put you on a **right downwind** for runway 7. Be prepared to turn **right base** for runway 7 when reaching a \*split (see *graphic*) in the road on I70 approximately 3 nautical miles west of Indianapolis Regional. Turn final at pilot's discretion.

### **VFR ARRIVALS FROM THE EAST**

Proceed toward the \*rest area on Interstate 70 just west of Richmond, IN arriving at 3,500 feet MSL. If not already in communication with ATC, contact Columbus Approach on 134.45 prior to arriving at the rest area. If unable to establish contact with ATC follow the procedure and continue inbound. Establish contact as soon as practical.

Be cautious. Stay alert for other aircraft in the vicinity. In the event traffic volume requires holding, be prepared to hold around the I70 rest area/ cloverleaf intersection (see holding graphic) at 3,500 feet MSL, left turns, or as instructed by ATC. Proceed westbound following I70 toward Indianapolis. Stay alert for traffic merging from the north near the\* Newcastle Henry Country Airport and from the south near the intersection of Route 109 and I70. Switch to Indianapolis Regional CTAF on 122.7 when authorized by ATC or when arriving at the I70 Rest Area, 9 nautical miles southeast of MQJ. Report inbound on the CTAF at the "Rest Area." If runway 25 is in use at Indianapolis Regional, turn northwest toward the town of \*Maxwell after overflying the \*I70 rest area (see graphic). Report inbound on the CTAF when over "Maxwell." From Maxwell, line up for a straight in approach to runway 25 at Indianapolis Regional.

If runway 7 is in use, **DO NOT TURN** northwest toward Maxwell at the rest area. Continue westbound along I70 toward Indianapolis for approximately 12 nautical miles. This will put you on a **right downwind** for runway 7. Be prepared to turn **right base** for runway 7 when reaching a \*split (see *graphic*) in the road on I70 approximately 3 nautical miles west of Indianapolis Regional. Turn final at pilot's discretion.

### **VFR ARRIVALS FROM THE SOUTH AND/OR WEST**

Proceed toward the \*Honda Plant just west of the town of Greensburg, IN arriving at 3,500 feet MSL. If not already in communication with ATC, contact Indianapolis Approach on 127.15 prior to arriving at the Honda Plant. If unable to establish contact with ATC follow the procedure and continue inbound. Establish contact as soon as practical.

Be cautious. Stay alert for other aircraft in the vicinity. In the event traffic volume requires holding, be prepared to hold around the Honda Plant at 3,500 feet MSL, left turns, or as instructed by ATC. Proceed northeast toward the town of \*Rushville, IN and then northwest toward the town of \*Knightstown, IN. Follow Route 109 northwest from Knightstown and turn westbound toward Indianapolis when reaching Interstate 70. Switch to Indianapolis Regional CTAF on 122.7 when authorized by ATC or when arriving at the I70 Rest Area, 9 nautical miles southeast of MQJ. Report inbound on the CTAF at the "Rest Area." If runway 25 is in use at Indianapolis Regional, turn northwest toward the town of \*Maxwell after overflying the \*I70 rest area (see graphic). Report inbound on the CTAF when over "Maxwell." From Maxwell, line up for a straight in approach to runway 25 at Indianapolis Regional.

If runway 7 is in use, **DO NOT TURN** northwest toward Maxwell at the rest area. Continue westbound along I70 toward Indianapolis for approximately another 12 nautical miles. This will put you on a **right downwind** for runway 7. Be prepared to turn **right base** for runway 7 when reaching a \*split (see *graphic*) in the road on I70 approximately 3 nautical miles west of Indianapolis Regional. Turn final at pilot's discretion.

## \*SPECIFIC COORDINATES

LOCATIONS	COORDINATES
PRAIRIE CREEK RESERVOIR	N40° 07' 22.24"/W85° 17' 20.04"
MORSE RESERVOIR	N40° 04' 24.97"/W86° 02' 57.53"
HONDA PLANT/GREENSBURG, IN	N39° 21' 42.74"/W85° 30' 49.56"
SUMMIT LAKE RESERVOIR	N40° 01' 33.40"/W85° 18' 49.82"
RUSHVILLE, IN	N39° 36' 30.43"/W85° 26' 41.42"
KNIGHTSTOWN, IN	N39° 47' 44.88"/W85° 31' 37.15"
SOUTH ARRIVAL I70 MERGE AREA	N39° 50' 22.69"/W85° 33' 15.53"
I70 REST AREA WEST OF RICHMOND, IN	N39° 51' 40.01"/W85° 01' 33.58"
I70 REST AREA FOR TURN TO MAXWELL, IN	N39° 49' 31.25"/W85° 42' 15.03"
I70 SPLIT FOR TURN TO RIGHT BASE RWY 7	N39° 48' 12.92"/W85° 57' 59.83"
NEWCASTLE HENRY COUNTY AIRPORT	N39° 52' 32.44"/W85° 19' 39.50"
JACKSONBURG, IN	N39° 51' 10.27"/W85° 06' 19.82"
MAXWELL, IN	N39° 51' 30.98"/W85° 46' 11.22"

## INDIANAPOLIS REGIONAL AIRPORT AFTER LANDING PROCEDURES

Exit the runway as quickly and as safely as possible. Do not stop on the runway unless absolutely necessary. Follow taxi instructions and directional signs to the designated parking areas. Marshallsers will direct aircraft to the parking spaces.

## INDIANAPOLIS REGIONAL AIRPORT DEPARTURE PROCEDURES

All IFR departures will follow normal procedures and obtain their clearance through Indianapolis clearance delivery on 119.25.

All VFR departures should maintain runway heading until reaching pattern altitude before turning on course. **CAUTION: Indianapolis Class C airspace approximately 8.5 NM from the departure end of runway 25.**

**Prior to Start-Up:** Please ensure that you have reviewed the special flight information, departure procedures, and temporary taxi procedures prior to engine start.

**Run-Up:** After start-up, proceed to the nearest designated run-up area. Follow directional signs and /or instructions from marshallsers.

**Taxi:** Follow directional signs and or instructions from marshallsers.

**VFR Departures:** Fly runway heading until reaching pattern altitude then on-course. **CAUTION: Indianapolis Class C airspace approximately 8.5 NM from the departure end of runway 25.**



# FREQUENCIES

**Grissom Approach 121.05**

**Fort Wayne Approach 127.2**

**Indy Approach 124.65**

**Indy Approach 119.05**

**Columbus Approach 134.45**

**Indy Approach 127.15**

**Terre Haute Approach 125.45**

**Indy Approach 124.95**

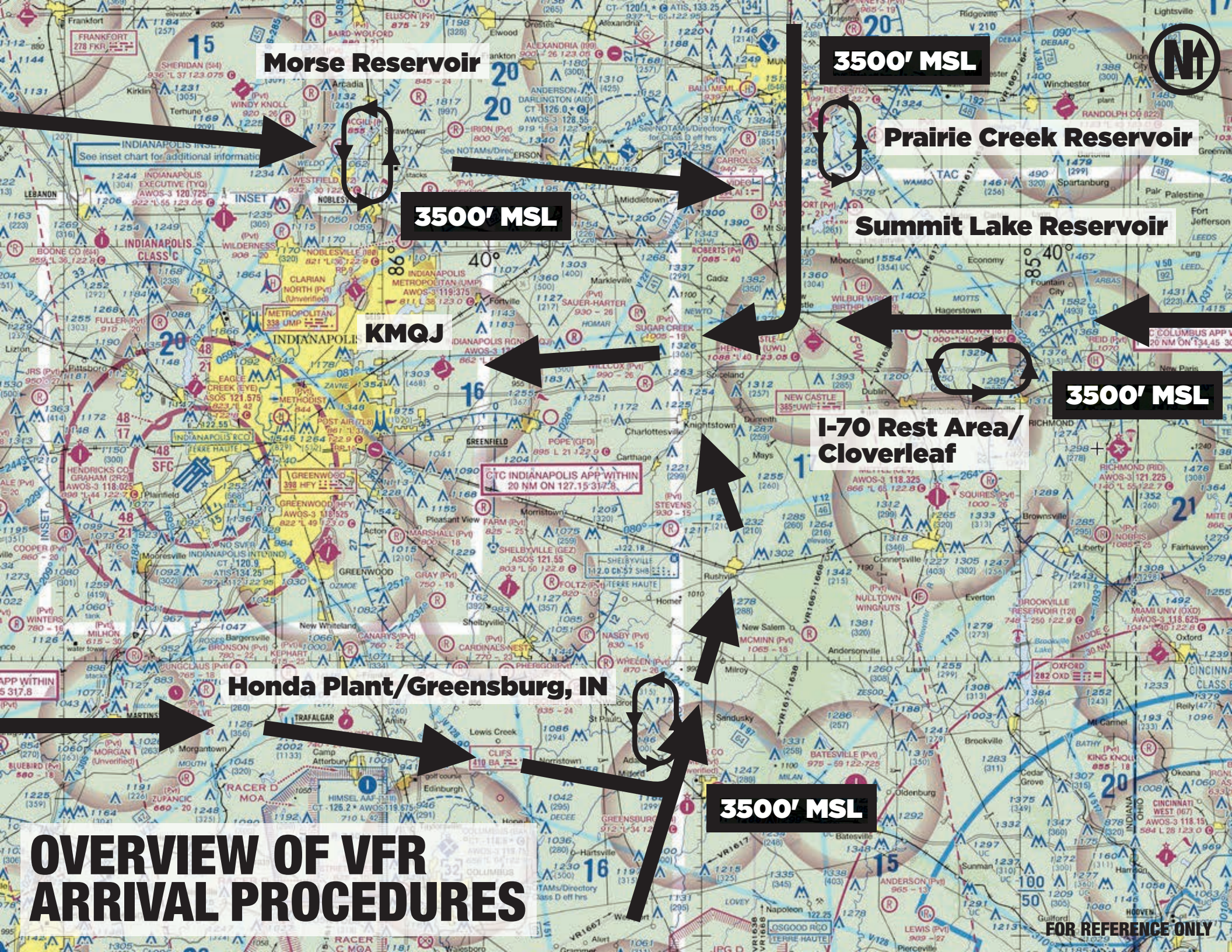
**Cincinnati Approach 128.7**

**Terre Haute Approach 119.8**

**Indy Center 124.77**

FOR REFERENCE ONLY





**Morse Reservoir**

**3500' MSL**

**Prairie Creek Reservoir**

**3500' MSL**

**Summit Lake Reservoir**

**KMQJ**

**3500' MSL**

**I-70 Rest Area/  
Cloverleaf**

**Honda Plant/Greensburg, IN**

**3500' MSL**

**OVERVIEW OF VFR  
ARRIVAL PROCEDURES**

**FOR REFERENCE ONLY**



# NORTH ARRIVALS AT PRAIRIE CREEK RESERVOIR



Muncie, IN

Selma

E Jackson St

Middletown Park

Muncie Bypass

**N40° 07' 22.24" / W85° 17' 20.04"**

67

3

32

Progress

FOR REFERENCE ONLY



E-Co-Rd-300-S

**North Arrivals**

E-Co-Rd-181-S

431-E

E-Co-Rd-322-S

Gates Rd

**3500' MSL**

**Prairie Creek Holding Pattern**  
**N40° 07' 22.24" / W85° 17' 20.04"**

Prairie Creek Reservoir

New Burlington

Medford

S-560 E-Rd

S-560-Rd-544 E

E-Rd

35

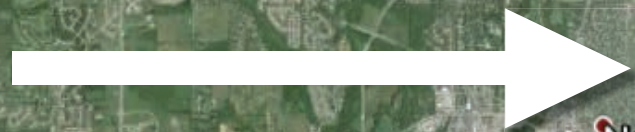
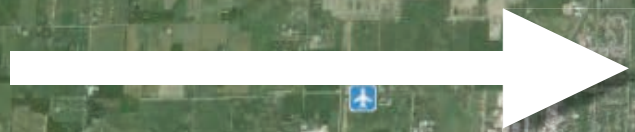
**PRAIRIE  
CREEK  
RESERVOIR  
HOLDING  
PATTERN**

FOR REFERENCE ONLY



**N40° 04' 24.97" / W86° 02' 57.53"**

**3500' MSL**



**WEST ARRIVAL AT MORSE RESERVOIR**

Sheridan

Cicero

Westfield

Hamilton

Noblesville

Arcadia

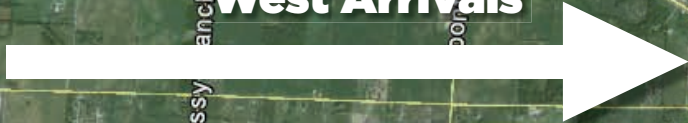
# MORSE RESERVOIR HOLDING PATTERN



**Morse Reservoir Holding Pattern**  
**N40° 04' 24.97" / W86° 02' 57.53"**

**3500' MSL**

**West Arrivals**

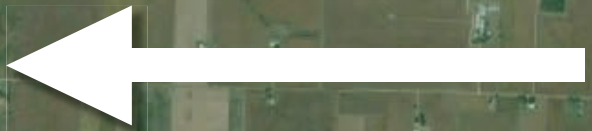




# I-70 MERGE FOR ARRIVALS FROM THE NORTH



**New Castle-Henry County Airport (KUWL)**









Greens Fork

Webster

27

Arba Pike

Chester

3500' MSL

38



35

W Industries Rd

Chester Blvd

Williamsburg Pike

Spring Grove

121

NJ St

ND St

22

Richmond

E Main

S 9th St

SL St

Wayne

N Center Rd

Round Barn Rd

Salisbury Rd

S Round Barn Rd

Salisbury Rd S

NW 5th St

Historic National Rd

Centerville

National Rd

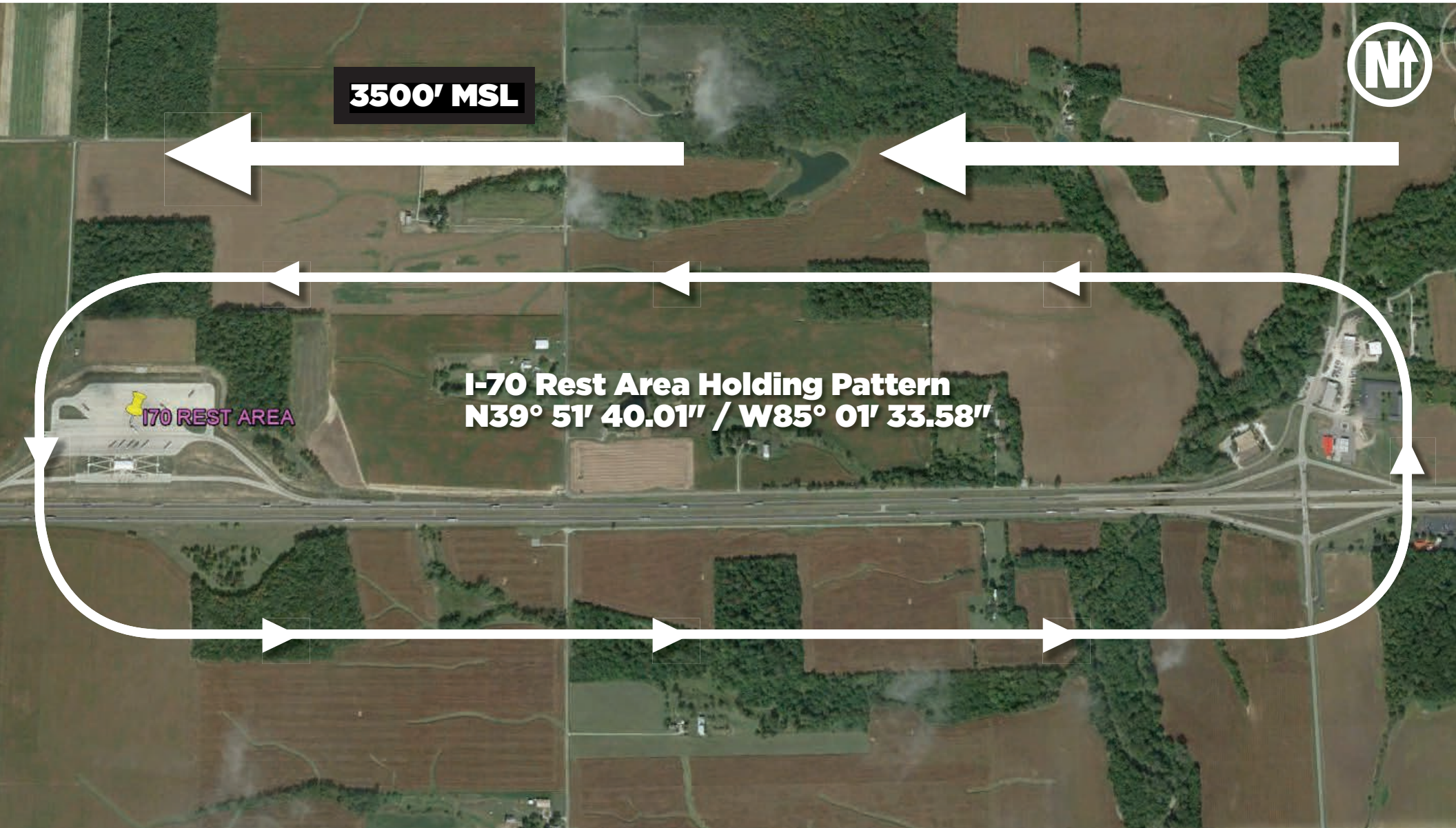
**I-70 Rest Area Holding Pattern  
N39° 51' 40.01" / W85° 01' 33.58"**

**EAST ARRIVALS AT  
INTERSTATE 70 REST AREA**

Technologies  
Google  
Image  
Framework Data

FOR REFERENCE ONLY

# I-70 REST AREA HOLDING PATTERN

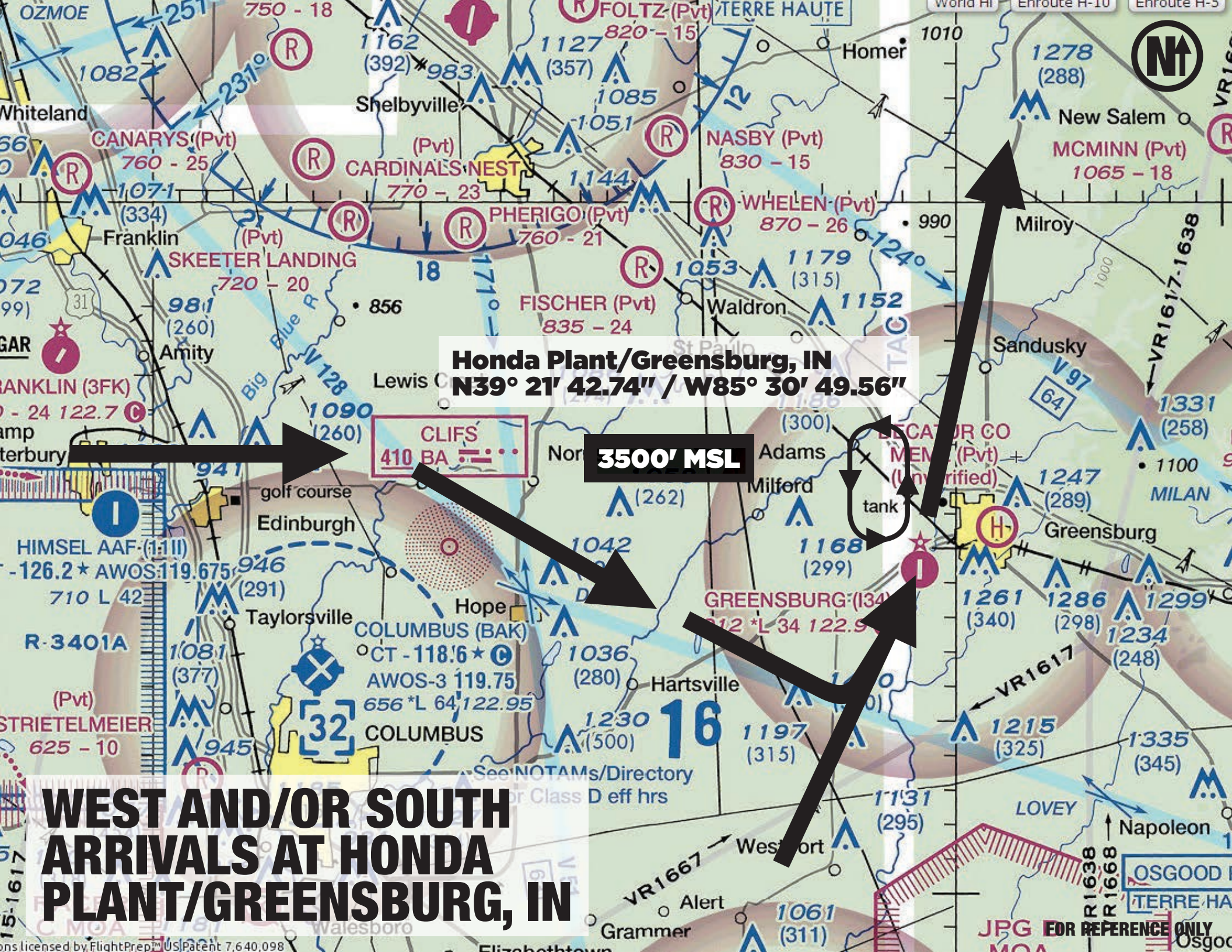


3500' MSL



I70 REST AREA

I-70 Rest Area Holding Pattern  
N39° 51' 40.01" / W85° 01' 33.58"



**Honda Plant/Greensburg, IN**  
**N39° 21' 42.74" / W85° 30' 49.56"**

**3500' MSL**

**WEST AND/OR SOUTH  
ARRIVALS AT HONDA  
PLANT/GREENSBURG, IN**

# HONDA PLANT/GREENSBURG, IN HOLDING PATTERN

To Rushville



Adams

**Honda Plant Holding Pattern**  
**N39° 21' 42.74" / W85° 30' 49.56"**

N Michigan Ave

**3500' MSL**

W Co Rd 248 NW

W Vandalia Rd

**West Arrivals**

**South Arrivals**



70

10

40

W County Rd 850 S

McGinnis St

S Greensboro Pike

Morgan St

Knights town, IN  
N39° 47' 44.88" / W85° 31' 37.15"

W Main St

Knights town

Raysville

Historic National Rd

**I-70 MERGE FOR  
ARRIVALS FROM  
THE SOUTH**

FOR REFERENCE ONLY



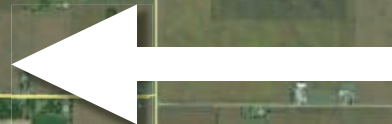


E-600-N



**Maxwell, IN**  
**N39° 51' 30.98" / W85° 46' 11.22"**

N-Main-St



E-300-N

N-400 E

**I-70 REST  
AREA FOR TURN  
NORTHWEST  
TO MAXWELL IF  
RUNWAY 25 IN USE**

Anton Tony Hulman Jr Memorial Way

**I-70 Rest Area**  
**N39° 49' 31.25" / W85° 42' 15.03"**



E-200N

FOR REFERENCE ONLY



McCordsville

Main St  
W 800 N

Woodbury

Pendleton Pike

234

Indianapolis International Airport

Gem

Spring Lake

70

Harpis

Runway 7 Approach

Runway 25 Approach

W Main St

40

MAXWELL Maxwell, IN

$N39^{\circ} 51' 30.98'' / W85^{\circ} 46' 11.22''$

**OVERHEAD VIEW  
OF APPROACHES  
TO KMQJ**

Europa Technologies  
© 2014 Google

FOR REFERENCE ONLY



Indianapolis Regional Airport

**Indianapolis Regional Airport**

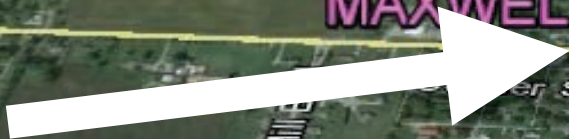
**ARRIVING AT  
MAXWELL, IN  
FOR STRAIGHT  
IN APPROACH  
TO RUNWAY 25**



**Maxwell, IN  
N39° 51' 30.98" / W85° 46' 11.22"**

**MAXWELL**

**Maxwell**



N Main St

EMILY

Ellis

FOR REFERENCE ONLY





**I-70 Split**  
**N39° 48' 12.92" /**  
**W85° 57' 59.83"**

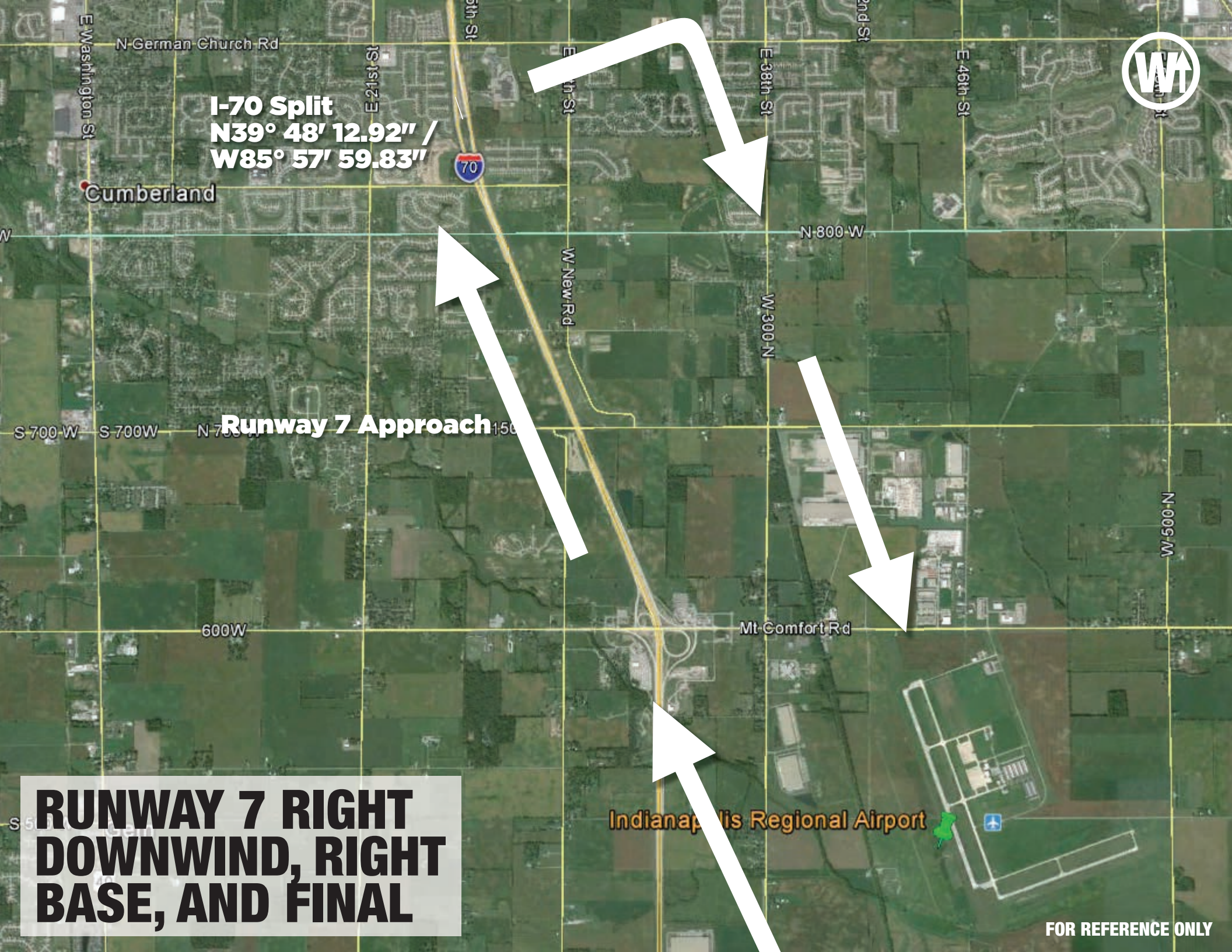
**Cumberland**

**Runway 7 Approach**

**RUNWAY 7 RIGHT  
DOWNWIND, RIGHT  
BASE, AND FINAL**

**Indianapolis Regional Airport**

**FOR REFERENCE ONLY**



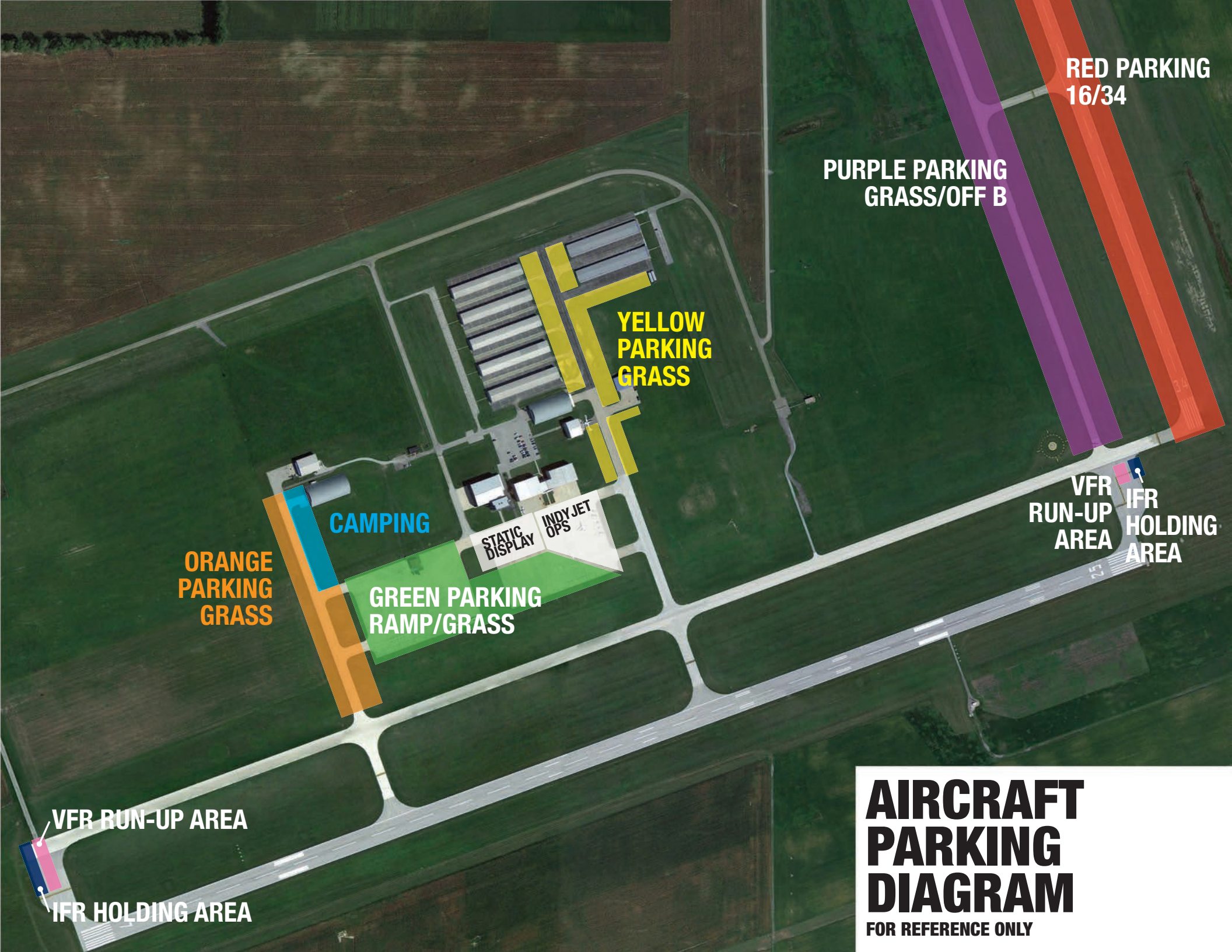


**N39° 48' 12.92" / W85° 57' 59.83"**

**I-70 SPLIT—TURN  
TO RIGHT BASE FOR  
RUNWAY 7**

# INDIANAPOLIS REGIONAL AIRPORT (KMQJ)





**RED PARKING**  
16/34

**PURPLE PARKING**  
GRASS/OFF B

**YELLOW PARKING**  
GRASS

**CAMPING**

**ORANGE PARKING**  
GRASS

**GREEN PARKING**  
RAMP/GRASS

STATIC  
DISPLAY

INDYJET  
OPS

VFR  
RUN-UP  
AREA

IFR  
HOLDING  
AREA

VFR RUN-UP AREA

IFR HOLDING AREA

# AIRCRAFT PARKING DIAGRAM

FOR REFERENCE ONLY

# INDIANAPOLIS METROPOLITAN AIRPORT (KUMP)

