

WESTMINSTER, MARYLAND

AL-5533 (FAA)

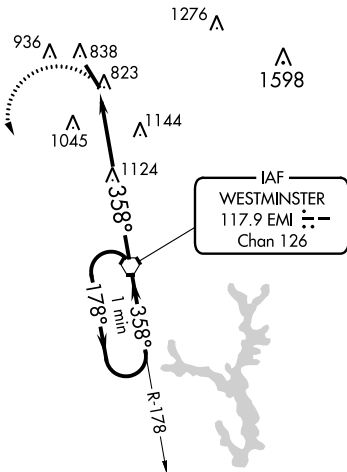
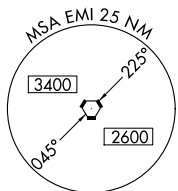
15232

VORTAC EMI <b>117.9</b> Chan <b>126</b>	APP CRS <b>358°</b>	Rwy Idg TDZE Apt Elev	<b>5100</b> <b>788</b> <b>789</b>
---	------------------------	-----------------------------	---

# VOR RWY 34

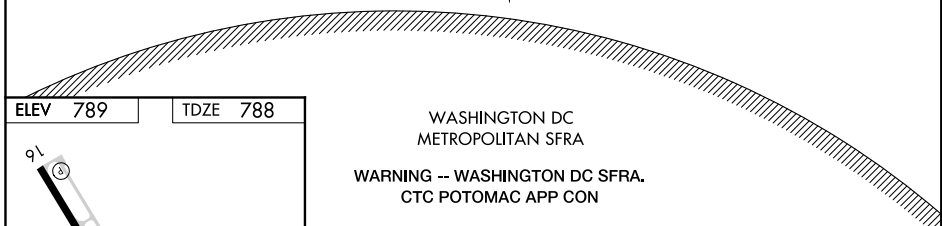
CARROLL COUNTY RGNL/JACK B. POAGE FIELD (DMW)

<b>NA</b>		MISSED APPROACH: Climbing left turn to 2900 direct EMI VORTAC and hold.	
AWOS-3 <b>121.25</b>	POTOMAC APP CON <b>125.525 291.625</b>	GCO <b>121.725</b>	UNICOM <b>122.7 (CTAF) 0</b>

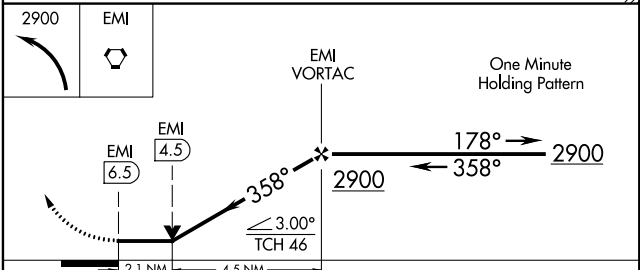


NE-3: 27 APR 2017 to 25 MAY 2017

NE-3: 27 APR 2017 to 25 MAY 2017



ELEV <b>789</b>	TDZE <b>788</b>
358° 6.5 NM from FAF	
REIL Rwy 16 and 34 MIRL Rwy 16-34	
FAF to MAP 6.5 NM	
Knots	60 90 120 150 180
Min:Sec	6:30 4:20 3:15 2:36 2:10



CATEGORY	A	B	C	D
S-34	1480-1	692 (700-1)	1480-2 692 (700-2)	NA
CIRCLING	1480-1	691 (700-1)	1480-2 691 (700-2)	NA

WESTMINSTER, MARYLAND  
Amdt 4B 31AUG06

CARROLL COUNTY RGNL/JACK B. POAGE FIELD (DMW)  
39°36'N - 77°00'W

# VOR RWY 34