

NOTAM

AIRCRAFT OWNERS AND PILOTS ASSOCIATION (AOPA) FLY-IN MALCOLM MCKINNON AIRPORT (SSI) – ST SIMONS ISLAND, GA

**NOTAM effective 12:00 noon local Friday, November 7, 2014
until 6:00 pm local Saturday, November 8, 2014**

TEMPORARY VFR PROCEDURES

Specific procedures contained within this NOTAM may be revised or unavailable at the time of the event. Users are encouraged to check NOTAMs frequently to verify they possess the most current revisions. This NOTAM does not supersede restrictions pertaining to the use of airspace contained in FDC NOTAMS.

In anticipation of a larger than normal number of aircraft operating to and from Malcolm McKinnon Airport (SSI) in conjunction with the AOPA Fly-In, the following procedures will be used to enhance safety and minimize delays.

IMPORTANT INFORMATION

Pilots are urged to review all applicable NOTAMs and arrival/departure procedures prior to conducting flight to Malcolm McKinnon Airport (SSI). IFR flight plans should be filed at least 6 hours prior to proposed departure time.

ENHANCED UNICOM

Effective 7:00 AM local until 6:00 PM local Saturday, November 8, 2014

- Air Boss will operate an enhanced UNICOM during the AOPA Fly-In on Saturday, November 8 and will provide arrival and departure advisories to ensure a constant and even flow of aircraft
- Follow standard non-towered airport operations all other times.

CAUTIONS

- Numerous special use airspace in the vicinity of Malcolm McKinnon Airport (SSI) and along the arrival routes.
- P50 Prohibited Area 22 miles southwest of Malcolm McKinnon Airport (SSI) along South Coast Arrival route. Airspace SFC to 2999' MSL.
- Jacksonville International Airport (JAX) Class C Airspace.
- Intensive parachute activity in the vicinity of Fernandina Beach (FHB).
- Commercial air carrier service at Brunswick Golden Isles (BQK)

LOCAL TRAINING AND PRACTICE APPROACHES

Local traffic pattern, closed traffic training, and practice instrument approaches will not be available at Malcolm McKinnon Airport (SSI) during the AOPA Fly-In.

IFR DELAYS

IFR delays may be incurred when arrival rates exceed airport capacity. Pilots should be prepared for the potential holding of IFR arrivals to Malcolm McKinnon Airport (SSI). Please plan accordingly.

MALCOLM MCKINNON AIRPORT (SSI) GENERAL INFORMATION

- **Runway 16/34:** Closed for aircraft parking.
- **Parking areas:** When operating in the parking areas, pilots are encouraged to be extra alert for taxiing aircraft, aircraft with engine(s) running, and vehicle/pedestrian traffic. Ground support personnel will be assisting aircraft to and from parking areas and run-up areas. For safety reasons, high RPM engine running is prohibited outside of designated run-up areas. Please review the parking map prior to landing and departure. This will brief you on the correct taxi routes.
- **Vehicular Traffic:** Vehicles are not allowed on ramps except those belonging to airport operators and tenants, and exhibitors participating in the AOPA Malcolm McKinnon Airport (SSI) Fly-In.
- **Pre-flight planning:** Please ensure that you have reviewed the special flight information, departure procedures, and temporary taxi procedures. **High traffic density is expected Saturday morning and afternoon. Consider arriving during off-peak hours.**

*ENROUTE VFR TRAFFIC ADVISORY SERVICES

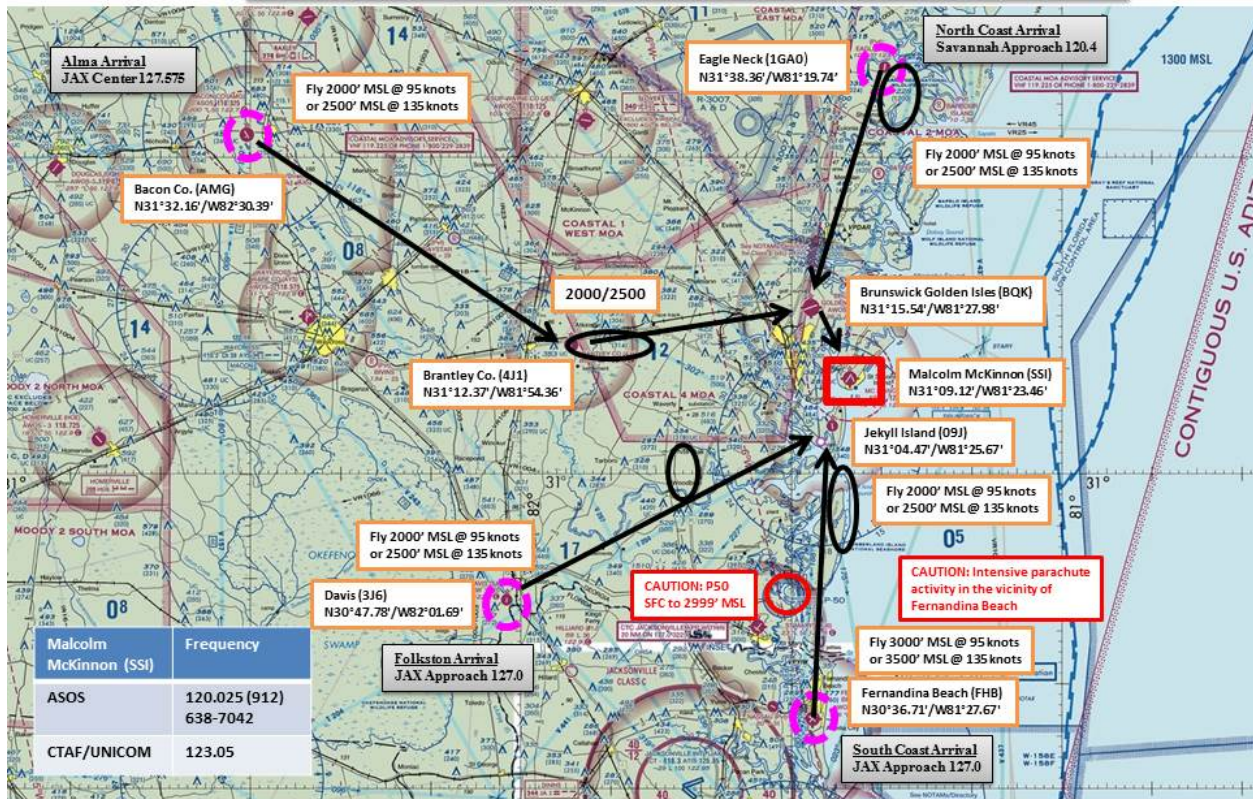
APPROACH/ARRIVAL ROUTE	FREQUENCY
North Coast Arrival—Savannah Approach	120.4
Alma Arrival—JAX Center	127.575
Folkston Arrival—JAX Approach	127.0
South Coast Arrival—JAX Approach	127.0

MALCOLM MCKINNON AIRPORT (SSI) FREQUENCIES

ASOS	120.025 (912) 638-7042
CTAF/UNICOM	123.05
JAX Center App/Dep	126.75

VFR ARRIVAL PROCEDURES

St Simons Island VFR Arrival Routes Overview



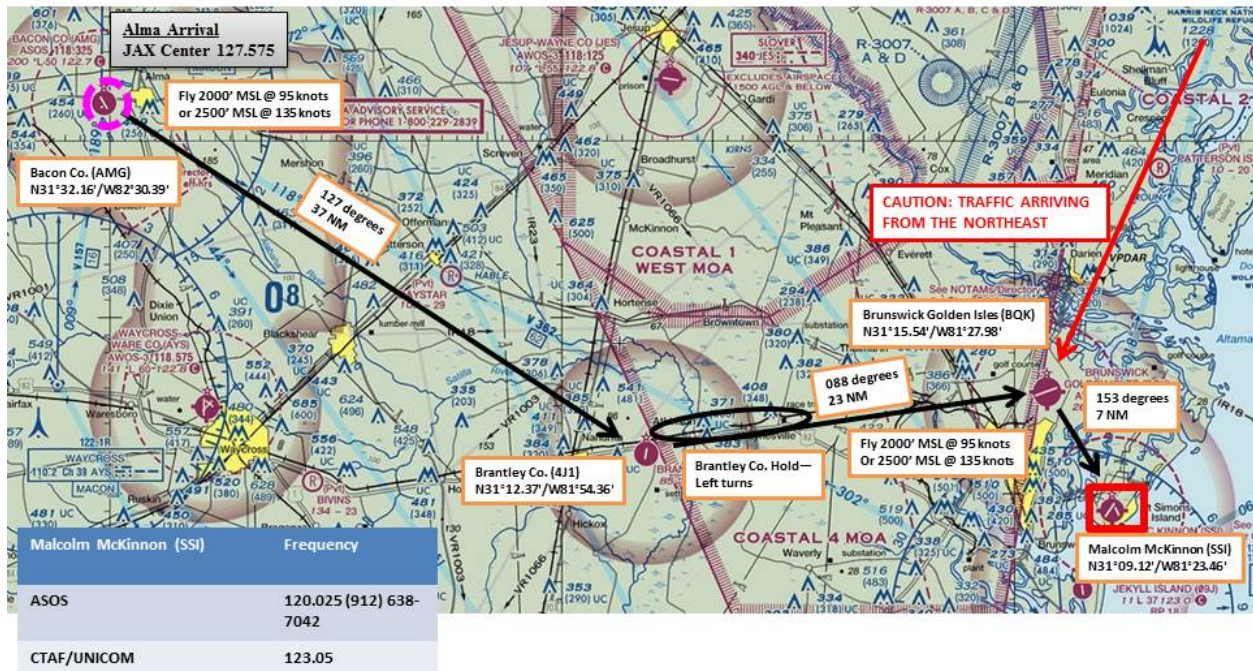
For reference only

1

ALMA VFR ARRIVAL ROUTE

(See arrival graphic)

Alma Arrival Route



For reference only

1

Monitor SSI ASOS as soon as practical on 120.025

- This arrival procedure begins over Bacon County Airport (AMG) at either 2,000 feet MSL or 2,500 feet MSL depending on aircraft speed. Aircraft that are able to maintain 95 knots (or maximum cruise speed if less than 95 knots) should fly at 2000 feet MSL. If your aircraft is unable to fly as slow as 95 knots, then maintain 135 knots at 2500 feet MSL. Faster traffic should stay to the right of slower traffic. Ensure that you have at least a ½ mile minimum separation between you and the aircraft you are following. *Proper spacing is critical so please pay attention to airspeed and separation.* **Caution: Stay alert for converging traffic.**
- Aircraft requesting VFR traffic advisories (**recommended**) should contact JAX Center on 127.575 well in advance of arriving over Bacon County Airport (AMG). *If unable to establish contact with ATC, follow the procedure and continue inbound. Establish contact as soon as practical.*
- Proceed southeast (approximate heading 127 degrees) toward Brantley County Airport (4J1) at 95 knots/2000' MSL or 135 knots/2500' MSL. Just beyond Brantley County is a VFR holding pattern called the Brantley County VFR Holding Pattern. In the event traffic volume requires holding, be prepared to fly the Brantley County VFR Holding Pattern at 95 knots/2000' MSL or 135 knots/2500' MSL, left turns. *(Refer to the Brantley County VFR Holding Pattern graphic.)*
- Proceed east (approximate heading 088 degrees) toward Brunswick Golden Isles (BQK) at 95 knots/2000' MSL or 135 knots/2500' MSL. Expect radar services to be terminated prior to arriving over

Brunswick Golden Isles (BQK). Monitor Malcolm McKinnon (SSI) UNICOM on 123.05 after radar services have been terminated and report when over BQK inbound. *Example: “St Simon’s UNICOM, N12345 over Brunswick with ASOS.”*

- **FOLLOW ADVISORIES FROM ENHANCED UNICOM**
- **Caution: Merge with traffic arriving from the northeast over Brunswick Golden Isles (BQK).**
Proper spacing is critical so please pay attention to airspeed and separation.

Runway 22 In Use

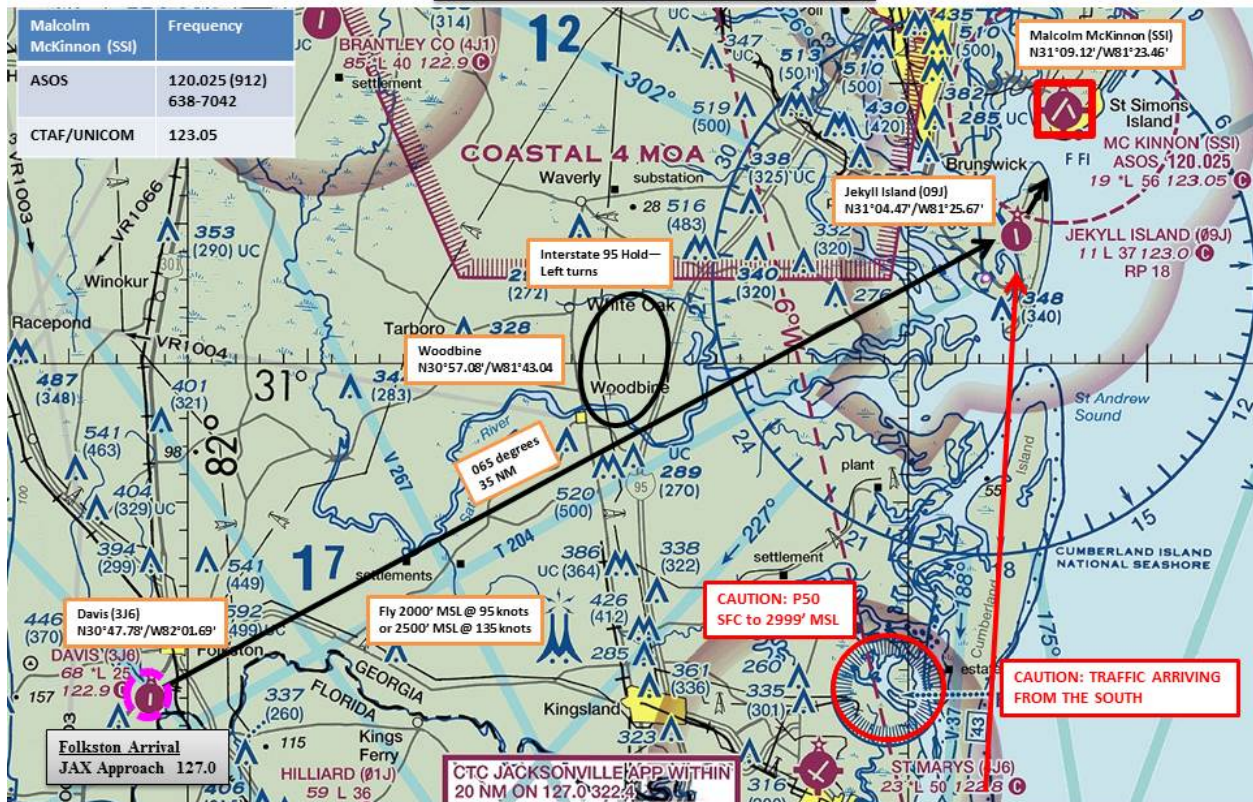
If **runway 22** is in use at Malcolm McKinnon (SSI), expect to proceed south from Brunswick Golden Isles (BQK) to enter a midfield right downwind for 22 at Malcolm McKinnon (SSI). After landing, follow taxi instructions, signs, and marshalls to the designated parking areas. **Caution: Stay alert for traffic on a left base for runway 22.**

Runway 4 In Use

If **runway 4** is in use at Malcolm McKinnon (SSI), expect to proceed southeast from Brunswick Golden Isles (BQK) to enter a midfield left downwind for runway 4 at Malcolm McKinnon (SSI). After landing, follow taxi instructions, signs, and marshalls to the designated parking areas. **Caution: Stay alert for traffic on a right base for runway 4.**

FOLKSTON VFR ARRIVAL ROUTE
(See arrival graphic)

Folkston Arrival Route



For reference only

1

Monitor SSI ASOS as soon as practical on 120.025

- This arrival procedure begins over Davis Airport (3J6) at either 2,000 feet MSL or 2,500 feet MSL depending on aircraft speed. Aircraft that are able to maintain 95 knots (or maximum cruise speed if less than 95 knots) should fly at 2000 feet MSL. If your aircraft is unable to fly as slow as 95 knots, then maintain 135 knots at 2500 feet MSL. Faster traffic should stay to the right of slower traffic. Ensure that you have at least a ½ mile minimum separation between you and the aircraft you are following. *Proper spacing is critical so please pay attention to airspeed and separation.* **Caution: Stay alert for converging traffic.**
- Aircraft requesting VFR traffic advisories (**recommended**) should contact JAX Approach on 127.0 well in advance of arriving over Davis Airport (3J6). *If unable to establish contact with ATC, follow the procedure and continue inbound. Establish contact as soon as practical.*
- Proceed northeast (approximate heading 065 degrees) toward Jekyll Island (09J) at 95 knots/2000' MSL or 135 knots/2500' MSL. Mid-way between Davis Airport (3J6) and Jekyll Island (09J) just west of Interstate 95 is a VFR holding pattern called the Interstate 95 VFR Holding Pattern. In the event traffic volume requires holding, be prepared to fly the Interstate 95 VFR Holding Pattern at 95 knots/2000' MSL or 135 knots/2500' MSL, left turns. *(Refer to the Interstate 95 VFR Holding Pattern graphic.)*
- Expect radar services to be terminated prior to arriving over Jekyll Island (09J). Monitor Malcolm McKinnon (SSI) UNICOM on 123.05 after radar services have been terminated and report when over

Jekyll Island (09J) inbound. *Example: “St Simon’s UNICOM, N12345 over Jekyll Island with ASOS.”*

- **FOLLOW ADVISORIES FROM ENHANCED UNICOM**
- **Caution: Merge with traffic arriving from the south over Jekyll Island (09J).** *Proper spacing is critical so please pay attention to airspeed and separation.*

Runway 22 In Use

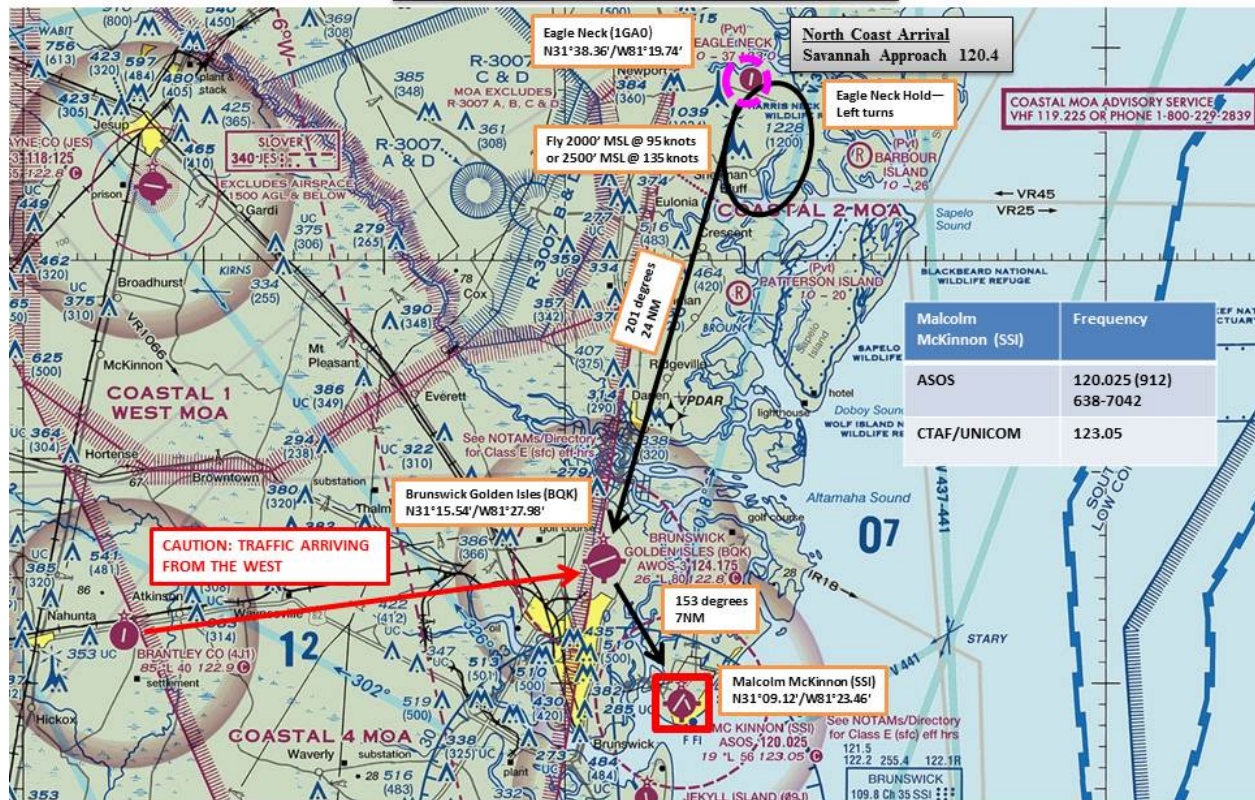
If **runway 22** is in use at Malcolm McKinnon (SSI), expect to proceed northeast from Jekyll Island (09J) to enter a left downwind for 22 at Malcolm McKinnon (SSI). After landing, follow taxi instructions, signs, and marshallers to the designated parking areas. **Caution: Stay alert for traffic on a right base for runway 22.**

Runway 4 In Use

If **runway 4** is in use at Malcolm McKinnon (SSI), expect to proceed northeast from Jekyll Island (09J) to enter midfield right downwind for runway 4 at Malcolm McKinnon (SSI). After landing, follow taxi instructions, signs, and marshallers to the designated parking areas. **Caution: Stay alert for traffic on a left base for runway 4.**

NORTH COAST VFR ARRIVAL ROUTE
(See arrival graphic)

North Coast Arrival Route



For reference only

1

Monitor SSI ASOS as soon as practical on 120.025

- This arrival procedure begins over Eagle Neck Airport (1GA0) at either 2,000 feet MSL or 2,500 feet MSL depending on aircraft speed. Aircraft that are able to maintain 95 knots (or maximum cruise speed if less than 95 knots) should fly at 2000 feet MSL. If your aircraft is unable to fly as slow as 95 knots, then maintain 135 knots at 2500 feet MSL. Faster traffic should stay to the right of slower traffic. Ensure that you have at least a ½ mile minimum separation between you and the aircraft you are following. *Proper spacing is critical so please pay attention to airspeed and separation.* **Caution: Stay alert for converging traffic.**
- Aircraft requesting VFR traffic advisories (**recommended**) should contact Savannah Approach on 120.4 well in advance of arriving over Eagle Neck Airport (1GA0). *If unable to establish contact with ATC, follow the procedure and continue inbound. Establish contact as soon as practical.*
- Proceed southwest (approximate heading 201 degrees) toward Brunswick Golden Isles Airport (BQK) at 95 knots/2000' MSL or 135 knots/2500' MSL. Just beyond Eagle Neck Airport (1GA0) is a VFR holding pattern called the Eagle Neck VFR Holding Pattern. In the event traffic volume requires holding, be prepared to fly the Eagle Neck VFR Holding Pattern at 95 knots/2000' MSL or 135 knots/2500' MSL, left turns. *(Refer to the Eagle Neck VFR Holding Pattern graphic.)*
- Expect radar services to be terminated prior to arriving over Brunswick Golden Isles (BQK). Monitor Malcolm McKinnon (SSI) UNICOM on 123.05 after radar services have been terminated and report when over BQK inbound. *Example: "St Simon's UNICOM, N12345 over Brunswick with ASOS."*

- **FOLLOW ADVISORIES FROM ENHANCED UNICOM**
- **Caution: Merge with traffic arriving from the west over Brunswick Golden Isles (BQK).** *Proper spacing is critical so please pay attention to airspeed and separation.*

Runway 22 In Use

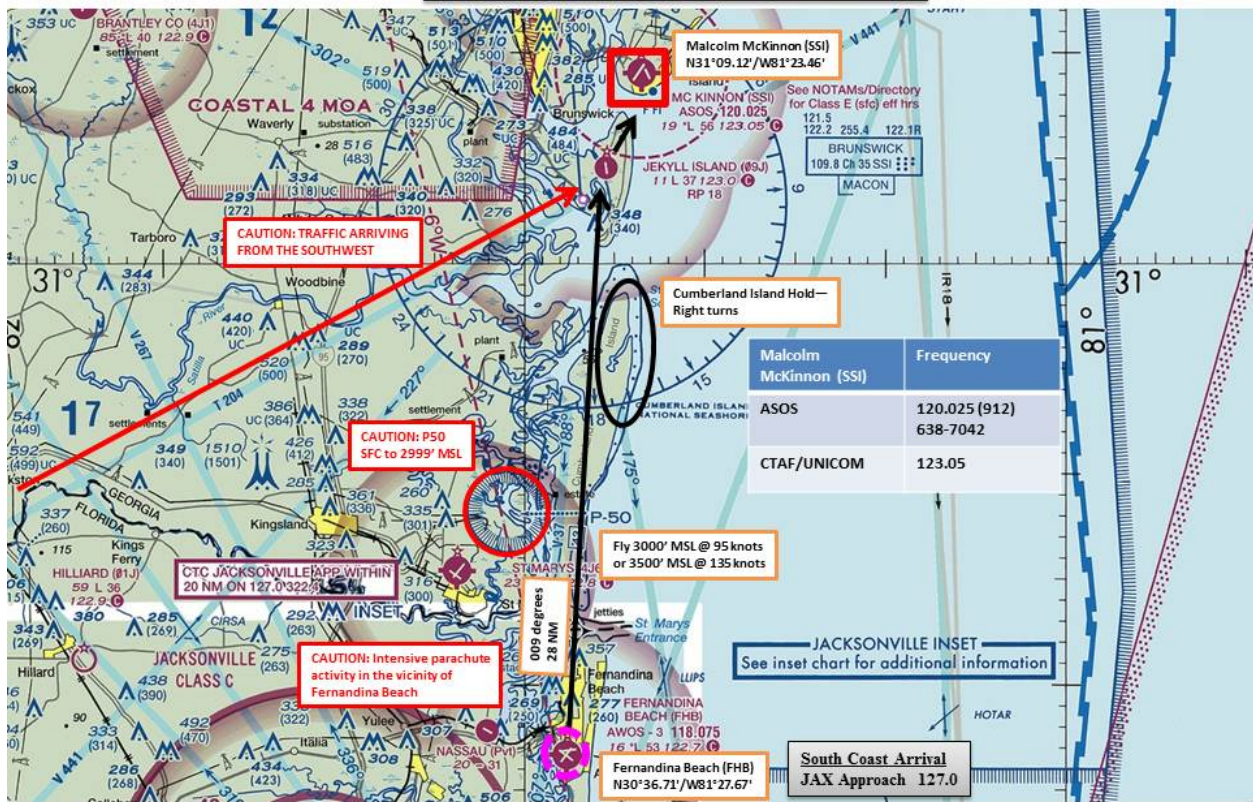
If **runway 22** is in use at Malcolm McKinnon (SSI), expect to proceed south from Brunswick Golden Isles (BQK) to enter a midfield right downwind for 22 at Malcolm McKinnon (SSI). After landing, follow taxi instructions, signs, and marshallsers to the designated parking areas. **Caution: Stay alert for traffic on a left base for runway 22.**

Runway 4 In Use

If **runway 4** is in use at Malcolm McKinnon (SSI), expect to proceed southeast from Brunswick Golden Isles (BQK) to enter a midfield left downwind for runway 4 at Malcolm McKinnon (SSI). After landing, follow taxi instructions, signs, and marshallsers to the designated parking areas. **Caution: Stay alert for traffic on a right base for runway 4.**

SOUTH COAST VFR ARRIVAL ROUTE
(See arrival graphic)

South Coast Arrival Route



For reference only

1

Monitor SSI ASOS as soon as practical on 120.025

- This arrival procedure begins over Fernandina Beach Airport (FHB) at either 3,000 feet MSL or 3,500 feet MSL depending on aircraft speed. Aircraft that are able to maintain 95 knots (or maximum cruise speed if less than 95 knots) should fly at 3,000 feet MSL. If your aircraft is unable to fly as slow as 95 knots, then maintain 135 knots at 3,500 feet MSL. Faster traffic should stay to the right of slower traffic. Ensure that you have at least a ½ mile minimum separation between you and the aircraft you are following. **Caution: Stay alert for converging traffic and intensive parachute activity in the vicinity.**
- Aircraft requesting VFR traffic advisories (**recommended**) should contact JAX Approach on 127.0 well in advance of arriving over Fernandina Beach (FHB). **If unable to establish contact with ATC, follow the procedure and continue inbound. Establish contact as soon as practical.**
- Proceed north/northeast (approximate heading 009 degrees) toward Jekyll Island (09J) at 95 knots/3,000 feet MSL or 135 knots/3,500 feet MSL. After clear of **P50**, descend to 2,000 feet at 95 knots or 2,500 feet at 135 knots. **Use caution while descending.**
- Just beyond **P50** is a VFR holding pattern called the Cumberland Island VFR Holding Pattern. In the event traffic volume requires holding, be prepared to fly the Cumberland Island VFR Holding Pattern at 95 knots/2,000 feet MSL or 135 knots/2,500 feet MSL, right turns. (Refer to the Cumberland Island VFR Holding Pattern graphic.)

- Expect radar services to be terminated prior to arriving over Jekyll Island (09J). Monitor Malcolm McKinnon (SSI) UNICOM on 123.05 after radar services have been terminated and report when over Jekyll Island (09J) inbound. *Example: “St Simon’s UNICOM, N12345 over Jekyll Island with ASOS.”*
- **FOLLOW ADVISORIES FROM ENHANCED UNICOM**
- **Caution: Merge with traffic arriving from the southwest over Jekyll Island (09J).** *Proper spacing is critical so please pay attention to airspeed and separation.*

Runway 22 In Use

If **runway 22** is in use at Malcolm McKinnon (SSI), expect to proceed northeast from Jekyll Island (09J) to enter a left downwind for 22 at Malcolm McKinnon (SSI). After landing, follow taxi instructions, signs, and marshallers to the designated parking areas. **Caution: Stay alert for traffic on a right base for runway 22.**

Runway 4 In Use

If **runway 4** is in use at Malcolm McKinnon (SSI), expect to proceed northeast from Jekyll Island (09J) to enter midfield right downwind for runway 4 at Malcolm McKinnon (SSI). After landing, follow taxi instructions, signs, and marshallers to the designated parking areas. **Caution: Stay alert for traffic on a left base for runway 4.**

SPECIFIC LATITUDE/LONGITUDE COORDINATES

BACON COUNTY AIRPORT (AMG)	N31°32.16'/W82°30.39'
BRANTLEY COUNTY AIRPORT (4J1)	N31°12.37'/W81°54.36'
EAGLE NECK AIRPORT (1GA0)	N31°38.36'/W81°19.74
BRUNSWICK GOLDEN ISLES AIRPORT (BQK)	N31°15.54'/W81°27.98'
DAVIS AIRPORT (3J6)	N30°47.78'/W82°01.69
FERNANDINA BEACH AIRPORT(FHB)	N30°36.71'/W81°27.67
JEKYLL ISLAND (09J)	N31°04.47'/W81°25.67
MALCOLM MCKINNON AIRPORT (SSI)	N31°09.12'/W81°23.46'
BEND IN ROUTE 82—BRANTLEY COUNTY HOLD	N31°14.06'/W81°45.48
WOODBINE—INTERSTATE 95 HOLD	N30°57.08'/W81°43.04
END OF PENINSULA—EAGLE NECK HOLD	N31°33.19'/W81°20.37
INLET—CUMBERLAND ISLAND HOLD	N30°58.38'/W81°24.48

MALCOLM MCKINNON AIRPORT (SSI) AFTER LANDING PROCEDURES

- Exit the runway as quickly and as safely as possible.
- Do not stop on the runway unless absolutely necessary.
- Follow taxi instructions and directional signs to the designated parking areas.
- Marshalls will direct aircraft to the parking spaces.

MALCOLM MCKINNON AIRPORT (SSI) DEPARTURE PROCEDURES

All **IFR** departures will follow normal procedures and obtain their clearance through the Brunswick RCO (Macon Radio) on 122.2 or 122.1R/109.8T.

VFR DEPARTURES

Prior to start-up -- Please ensure that you have reviewed the special flight information, departure procedures, and temporary taxi procedures prior to engine start. Check ASOS on 120.025.

Run-up -- After start-up, monitor enhanced UNICOM and follow instructions to the nearest designated run-up area.

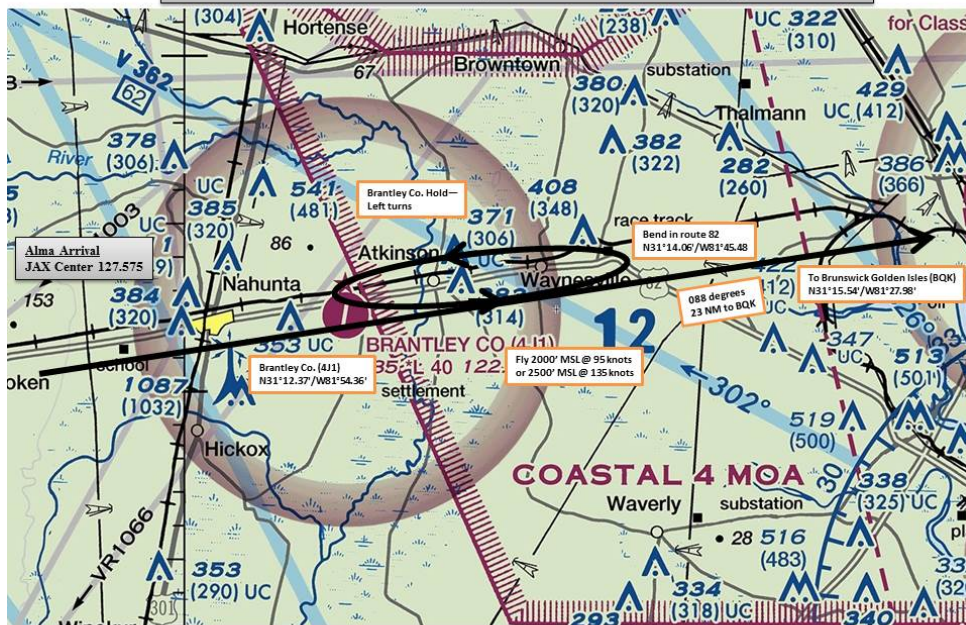
Taxi – When run-up is complete, follow taxi instructions to the active runway. **MONITOR** enhanced UNICOM on 123.05. Contact enhanced UNICOM when number one for departure. *Example: “St. Simons UNICOM, N12345 is number one at Runway 4”*

Departure – Follow instructions from enhanced UNICOM.

VFR Traffic Advisories

- Aircraft departing south towards Jacksonville or Ormond Beach, monitor 126.75 after departure and contact JAX Approach on 127.0 when south of Jekyll Island (09J). **Caution: P50 Prohibited Area SFC-2999 feet MSL along route.**
- Aircraft departing north/northeast, requesting above 10,500 contact Jacksonville Center on 126.75 when 12 miles north/northeast of Malcolm McKinnon Airport (SSI) or abeam Sapelo Island. Requesting below 10,500 contact Savannah Approach on 120.4
- Aircraft departing West or Northwest, contact Jacksonville Center on 126.75 after crossing Interstate 95.

Alma Arrival--Brantley Co. VFR Holding Pattern



For reference only

1

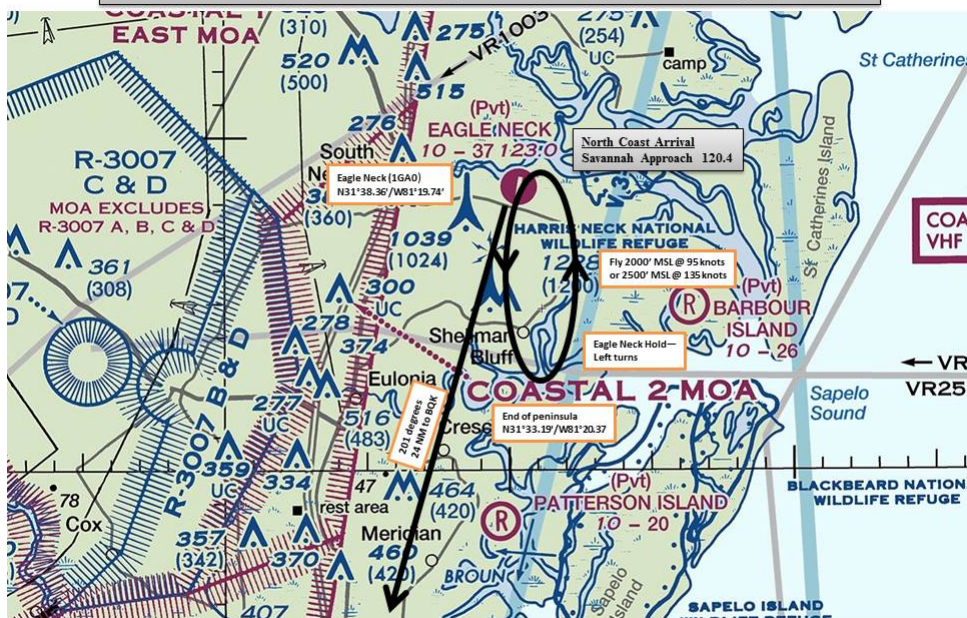
South Coast Arrival--Cumberland Island VFR Holding Pattern



For reference only

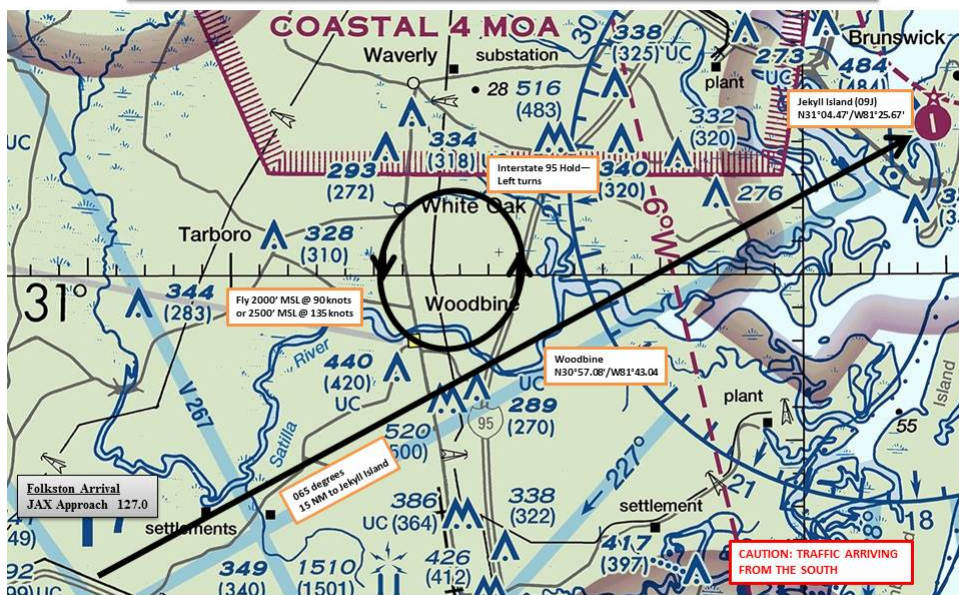
1

North Coast Arrival--Eagle Neck VFR Holding Pattern



1

Folkston Arrival--Interstate 95 VFR Holding Pattern



1