

AOPA FLY•IN

Plymouth, MA



PILOT INFORMATION PACKET

Including Special Flight Procedures

Plymouth, MA | July 12, 2014



Welcome to the AOPA Fly-In at KPYM in Plymouth, Massachusetts. The AOPA Fly-In at Plymouth Municipal Airport will have something for everyone! Spend the day exploring exhibits, ask AOPA President Mark Baker questions at a Pilot Town Hall, eat breakfast and lunch and learn something new in seminars! Renowned as the home of those who founded this great country, Plymouth is the quintessential New England town with historic homes, rich history—and great seafood.

PLYMOUTH MUNICIPAL AIRPORT (KPYM)



246 South Meadow Road
Plymouth, MA 02360

Hours of operation:

Monday-Friday 6:00 AM – 10:00 PM
Saturday 6:00 AM – 1:00 AM,
Sunday 6:00 AM – 12:00 AM

Phone: 508-746-2020

Fax: 508-747-4483

Web site: www.pymairport.com

Email: tmaher@townhall.plymouth.ma.us

To encourage arrivals on the day prior to the Fly-In, Plymouth Municipal Airport will be offering a special 15 cent per gallon discount for aircraft arriving and ordering fuel on Friday, July 11, 2014.

PARKING AND SERVICE DETAILS

Fuel/oil orders will be taken at the time your aircraft is parked. If you need either, please make sure to make the request at that time. Orders made at a later time might delay your departure. Credit card information will be requested at the time the order is placed.

CHOCKS AND TIE DOWNS

Wood chocks will be available in limited supply so we highly recommend that you bring your own. Tie down hooks are scattered on the ramp and parking on tie down spaces is unlikely. It is recommended that you bring tiedowns and anchors for any additional aircraft securing needs.

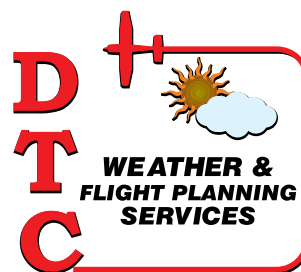
AFTER-HOURS DEPARTURES

If you will be departing after the airport's normal operating hours please contact the main number at 508-746-2020. An after-hours callout is subject to an additional fee.

CAMPING

Aircraft and RV camping will be permitted at Plymouth Municipal Airport on Friday and Saturday, July 11 & 12. Space is limited and will be available on a first-come, first-served basis. There is no charge. If you plan to camp, you must RSVP by sending an email to events@aopa.org and put "Camping at PYM" in the subject line. Please include your aircraft's N number and type in the email. A confirmation will be sent with additional information.

DTC FLIGHT PLANNING



Check weather and file your flight plan with DTC DUAT at www.duat.com; the official weather sponsor of AOPA's Regional Fly-Ins.

RENTAL CAR AVAILABILITY



Phone: 866-315-9155

RELIEVER AIRPORT OPTION TO AVOID HIGH DENSITY TRAFFIC AT PLYMOUTH MUNICIPAL AIRPORT

TAUNTON MUNICIPAL-KING FIELD (KTAN) is located 13 nautical miles west of Plymouth Municipal Airport and is approximately a 30 minute drive to KPYM. Taunton Municipal-King Field has one hard surface runway and one grass runway. Hard surface: 12/30 is 3500 X 75. Grass surface: 04/22 is 1900 X 60. The airspace is Class G. Rental cars are available through Enterprise at 508-828-9666.

In the event that Fly-In parking reaches capacity at Plymouth Municipal Airport, ATC might recommend Taunton Municipal-King Field as an alternate. Complimentary ground transportation between KTAN and KPYM will be provided by AOPA. Rental cars are also available through Enterprise at 866-315-9155.

AOPA complimentary ground transportation will run Saturday, July 12 from 8:00 AM – 6:00 PM; departing every 10-15 minutes.

OTHER AREA AIRPORTS

There are several public use airports that are within an hour drive of Plymouth Municipal Airport. You might elect to use one of these airports in the event that Plymouth Municipal Airport aircraft parking reaches capacity. Rental cars are also available at many of these airports. Please contact the airport directly for more information.

NEW BEDFORD REGIONAL AIRPORT (KEWB) is located 17 nautical miles southwest of Plymouth Municipal Airport and is approximately a 45 minute drive to KPYM. New Bedford Regional Airport has two hard surface runways. 14/32 is 5000 X 150 and 05/23 is 4997 X 150. The airspace is Class D. Rental cars are available through Enterprise at 866-315-9155.

MARSHFIELD MUNICIPAL-GEORGE HARLOW FIELD (KGHG)

is located 11 miles northeast of Plymouth Municipal Airport and is approximately a 30 minute drive to KPYM. Marshfield Municipal Airport has one hard surface runway. 06/24 is 3001 X 75. The airspace is Class G. Caution: Boston Class B airspace just north of airport. Rental cars are available through Enterprise at 781-826-8815.

MANSFIELD MUNICIPAL AIRPORT (1B9) is located 21 miles northwest of Plymouth Municipal Airport and is approximately a 40 minute drive to KPYM. Mansfield Municipal Airport has one hard surface runway and one grass runway. Hard surface: 14/32 is 3503 X 75. Grass surface: 04/22 is 2200 X 100. The airspace is Class G. Rental cars are available through Enterprise at 508-543-3622.

NORTH CENTRAL STATE AIRPORT (KSFZ) is located 33 miles west of Plymouth Municipal Airport and is approximately a 1 hour drive to KPYM. North Central State Airport has two hard surface runways. 05/23 is 5000 X 100 and 15/33 is 3211 X 75. The airspace is Class G. Caution: Providence Class C airspace just south of airport. Rental cars are available through Enterprise at 866-315-9155. Hertz.

AIRCRAFT OWNERS AND PILOTS ASSOCIATION (AOPA) FLY-IN | PLYMOUTH, MASSACHUSETTS (PYM) EFFECTIVE 12:00 NOON LOCAL FRIDAY, JULY 11, 2014 UNTIL 6:00 PM LOCAL SATURDAY, JULY 12, 2014 TEMPORARY VFR PROCEDURES

Specific procedures contained with this NOTAM may be revised or unavailable at the time of the event. Users are encouraged to check NOTAMs frequently to verify they possess the most current revisions. This NOTAM does not supersede restrictions pertaining to the use of airspace contained in FDC NOTAMS.

In anticipation of a larger than normal number of aircraft operating to and from the Plymouth Municipal Airport (PYM) in conjunction with the AOPA Fly-In, the following procedures will be used to enhance safety and minimize delays.

IFR DELAYS

IFR delays may be incurred when arrival rates exceed airport capacity. Pilots should be prepared for the potential holding of IFR arrivals at Plymouth Municipal Airport. Please plan accordingly.

IMPORTANT INFORMATION

Pilots are urged to review all applicable NOTAMs and arrival/departure procedures prior to conducting flight to Plymouth Municipal Airport. IFR flight plans should be filed at least 6 hours prior to proposed departure time.

No VFR access to Boston Class B airspace will be granted during the AOPA Fly-In including aerial tours of downtown Boston.

LOCAL TRAINING AND PRACTICE APPROACHES

Local traffic pattern, closed traffic training, and practice instrument approaches will not be allowed at Plymouth Municipal Airport during the AOPA Fly-In.

CAUTIONS

Boston Class B Airspace

Providence Class C Airspace

New Bedford Class D Airspace

Groton-New London Class D Airspace

Quonset State (OQU) Class D Airspace

Parachute operations in the vicinity of Taunton-King (TAN), Cranland (28M), Newport State (UUU), and North Central State (SFZ)

AEROBATIC DEMONSTRATION

There will be a 10-15 minute aerobatic demonstration beginning at approximately 12:30 PM local during the AOPA Fly-In. Arrivals and departures will be stopped for the duration of the demonstration. Please plan accordingly.

PLYMOUTH MUNICIPAL AIRPORT

GENERAL INFORMATION

Parking areas: When operating in the parking areas, pilots are encouraged to be extra alert for taxiing aircraft, aircraft with engine(s) running, and vehicle/pedestrian traffic. Ground support personnel will be assisting aircraft to and from parking areas and run-up areas. For safety reasons, high RPM engine running is prohibited outside of designated run-up areas. Please review the parking map prior to landing and departure. This will brief you on the correct taxi routes.

Vehicular Traffic: Vehicles are not allowed on ramps except those belonging to airport operators and tenants, and exhibitors participating in the AOPA Plymouth Fly-In.

Pre-Flight Planning: Please ensure that you have reviewed the special flight information, departure procedures, and temporary taxi procedures prior to engine start. High traffic density is expected Saturday morning and afternoon. Consider arriving during off-peak hours.

PLYMOUTH MUNICIPAL AIRPORT FREQUENCIES

PLYMOUTH MUNICIPAL AIRPORT	FREQUENCY
ASOS-3	ASOS 135.625
APPROACH/DEPARTURE	CAPE APPROACH 118.2
CLEARANCE DELIVERY	127.75
CTAF	123.0
AIRCRAFT PARKING	123.3

HOPEDALE INDUSTRIAL VFR ARRIVAL PROCEDURE

This arrival procedure begins over Hopedale Industrial Airport (1B6). Aircraft may contact ATC in advance of arriving over Hopedale Industrial for VFR traffic advisories. If unable to establish contact with ATC, follow the procedure and continue inbound. Use the frequency graphic to determine which ATC facility to contact. **Caution: Stay alert for converging traffic.**

There are two altitudes and speeds for this arrival route. Aircraft that are able to maintain 90 knots (or maximum cruise speed if less than 90 knots) should fly at 2000 feet MSL. If your aircraft is unable to fly as slow as 90 knots, then maintain 135 knots at 2500 feet MSL. Faster traffic should stay to the right of slower traffic. Ensure that you have at least a ½ mile minimum separation between you and the aircraft you are following. *Proper spacing is critical so please pay attention to airspeed and minimum separation.*

Proceed toward Mansfield Municipal Airport (1B9) at 90 knots/2000' MSL or 135 knots/2500' MSL. Just beyond Mansfield is a VFR holding pattern northeast of the arrival route called the Lake Sabbatia Holding Pattern. In the event traffic volume requires holding, be prepared to fly the Lake Sabbatia Holding Pattern at 90 knots/2000' MSL or 135 knots/2500' MSL, left turns. *(Refer to Lake Sabbatia Holding Pattern graphic.)*

Proceed southeast toward Taunton-King Municipal Airport (TAN). Then proceed to the southwest shore of Long Pond. **Caution: Stay alert for traffic converging from the west and southwest.** In the event traffic volume requires holding, be prepared to fly the Long Pond Holding Pattern at 90 knots/2000' MSL or 135 knots/2500' MSL, left turns. *(Refer to Long Pond Holding Pattern graphic.)* Switch to Plymouth Municipal CTAF on 123.0 upon passing Long Pond.

Depending on wind direction, proceed toward Plymouth Municipal Airport (PYM) for either a straight in approach to runway 6 or left downwind for runway 24. If runway 24 is in use, **proceed to the shoreline** before turning left base. Turn to final at pilot's discretion. *Proper spacing is critical so please pay attention to airspeed and minimum separation.*

WESTERLY STATE VFR ARRIVAL PROCEDURE

This arrival procedure begins over Westerly State Airport (WST). Aircraft may contact ATC in advance of arriving over Westerly State for VFR traffic advisories. If unable to establish contact with ATC, follow the procedure and continue inbound. Use the frequency graphic to determine which ATC facility to contact. **Caution: Stay alert for converging traffic.**

There are two altitudes and speeds for this arrival route. Aircraft that are able to maintain 90 knots (or maximum cruise speed if less than 90 knots) should fly at 2000 feet MSL. If your aircraft is unable to fly as slow as 90 knots, then maintain 135 knots at 2500 feet MSL. Faster traffic should stay to the right of slower traffic. Ensure that you have at least a ½ mile minimum separation between you and the aircraft you are following. *Proper spacing is critical so please pay attention to airspeed and minimum separation.*

Proceed toward Newport State Airport (UUU) at 90 knots/2000' MSL or 135 knots/2500' MSL. About halfway between Westerly State and Newport State is a VFR holding pattern north of the arrival route called the Worden Pond/Indian Lake Holding Pattern. In the event traffic volume requires holding, be prepared to fly the Worden Pond/Indian Lake Holding Pattern at 90 knots/2000' MSL or 135 knots/2500' MSL, left turns. *(Refer to Worden Pond/Indian Lake Holding Pattern graphic).*
Caution: Quonset State Class D Airspace. Possible military traffic in the vicinity.

Proceed northeast toward the location of the old (now closed) Fall River Municipal Airport (N41°45'18.69"/W71°06'36.24"). **Caution: Tiverton Tower 1049 MSL. Stay alert for traffic converging from the east (Cape and Islands).** Proceed east toward the south shore of Long Pond. **Stay alert for traffic converging from the northwest.** In the event traffic volume requires holding, be prepared to fly the Long Pond Holding Pattern at 90 knots/2000' MSL or 135 knots/2500' MSL, left turns. *(Refer to Long Pond Holding Pattern graphic.)* Switch to Plymouth Municipal CTAF on 123.0 upon passing Long Pond.

Depending on wind direction, proceed toward Plymouth Municipal Airport (PYM) for either a straight in approach to runway 6 or left downwind for runway 24. If runway 24 is in use, **proceed to the shoreline** before turning left base. Turn to final at pilot's discretion. *Proper spacing is critical so please pay attention to airspeed and minimum separation.*

CAPE AND ISLANDS VFR ARRIVAL PROCEDURE

There are two altitudes and speeds for this arrival route. Aircraft that are able to maintain 90 knots (or maximum cruise speed if less than 90 knots) should fly at 2000 feet MSL. If your aircraft is unable to fly as slow as 90 knots, then maintain 135 knots at 2500 feet MSL. Faster traffic should stay to the right of slower traffic. Ensure that you have at least a ½ mile minimum separation between you and the aircraft you are following. *Proper spacing is critical so please pay attention to airspeed and minimum separation.*

Proceed west toward New Bedford Regional Airport (KEWB). Stay south of the Class D airspace. Aircraft requesting VFR traffic advisories should contact ATC prior to crossing Buzzards Bay. If unable to establish contact with ATC, follow the procedure and continue inbound. Use the frequency graphic to determine which ATC facility to contact.

Proceed toward the south shore of South Watuppa Pond at 90 knots (or maximum cruise speed if less than 90 knots) /2000' MSL or 135 knots/2500' MSL. After reaching the south shore of South Watuppa Pond proceed north toward the location of the old (now closed) Fall River Municipal Airport (N41°45'18.69"/W71°06'36.24"). **Caution: Stay alert for traffic converging from the southwest along the Westerly State Arrival Route.** Proceed east toward the south shore of Long Pond. **Stay alert for traffic converging from the northwest.** In the event traffic volume requires holding, be prepared to fly the Long Pond Holding Pattern at 90 knots/2000' MSL or 135 knots/2500' MSL, left turns. *(Refer to Long Pond Holding Pattern graphic).* Switch to Plymouth Municipal CTAF on 123.0 upon passing Long Pond.

Depending on wind direction, proceed toward Plymouth Municipal Airport (PYM) for either a straight in approach to runway 6 or left downwind for runway 24. If runway 24 is in use, **proceed to the shoreline** before turning left base. Turn to final at pilot's discretion. *Proper spacing is critical so please pay attention to airspeed and minimum separation.*

GO AROUND PROCEDURE AT PLYMOUTH

If you have to go around, fly back to the Long Pond holding area, north shore of Assawompset Pond, 2000' MSL at 90 knots (or maximum cruise speed if less than 90 knots) or 2500' at 135 knots MSL and merge with traffic there before heading back to Plymouth. Left traffic for the Long Pond Holding Pattern. **See Go Around Procedure Runway 6/24 graphic.**

*SPECIFIC COORDINATES

LOCATIONS	COORDINATES
HOPEDALE INDUSTRIAL AIRPORT	N42°06'18.70"/W71°30'34.88"
LAKE SABBATIA	N41°56'22.42"/W71°06'31.18"
LAKE NIPPENICKET	N41°57'45.98"/W71°02'14.88"
WINNECUNNET POND	N41°58'25.85"/W71°08'00.51"
MANSFIELD MUNICIPAL AIRPORT	N42°00'02.37"/W71°11'49.24"
TAUNTON-KING MUNICIPAL AIRPORT	N41°52'24.22"/W71°00'55.03"
LONG POND	N41°46'47.61"/W70°56'52.25"
WESTERLY STATE AIRPORT	N41°20'57.40"/W71°48'24.00"
WORDEN POND	N41°45'18.69"/W71°06'36.24"
INDIAN LAKE	N41°28'29.28"/W71°27'59.10"
NEWPORT STATE AIRPORT	N41°31'56.83"/W71°16'56.11"
FALL RIVER MUNICIPAL (CLOSED)	N41°45'18.69"/71°06'36.24"
SOUTH WATUPPA POND	N41°38'35.99"/W71°07'22.33"
PLYMOUTH MUNICIPAL AIRPORT	N41°54'35.05"/W70°43'55.67"

PLYMOUTH MUNICIPAL AIRPORT AFTER LANDING PROCEDURES

Exit the runway as quickly and as safely as possible. Do not stop on the runway unless absolutely necessary. Follow taxi instructions and directional signs to the designated parking areas. Marshallsers will direct aircraft to the parking spaces. Expect to park on the north side of runway 6/24 in Echo or Mike parking, **DO NOT** exit to the south side of runway 6/24 unless instructed to do so or absolutely necessary.

PLYMOUTH MUNICIPAL AIRPORT DEPARTURE PROCEDURES

All **IFR** departures will follow normal procedures and obtain their clearance through Cape Approach clearance delivery on 127.75.

All **VFR** departures should maintain runway heading until reaching pattern altitude before turning on course. **CAUTION: Boston Class B Airspace just north of Plymouth starting at 3000' MSL.**

VFR Traffic Advisories: VFR aircraft desiring flight following should wait to make their request with the appropriate ATC facility until they are a **minimum** of 10 NM from Plymouth Municipal airport (KPYM).

Prior to Start-Up: Please ensure that you have reviewed the special flight information, departure procedures, and temporary taxi procedures prior to engine start.

Run-up: After start-up, proceed to the nearest designated run-up area. Follow directional signs and /or instructions from marshallsers.

Taxi: Follow directional signs and or instructions from marshallsers.

If you parked on the south side of runway 6/24 in Kilo, Sierra, or 33 parking, **BE EXTREMELY CAUTIOUS** if you need to cross runway 6/24 for departure. Monitor 123.3 for crossing advisories.

If runway 24 is in use, departures can be made at the intersection of runway 15/33 and runway 24. The useful length of runway 24 from the intersection is approximately 3,300 feet. Full length is 4,349 feet.

If you need to use the full length of runway 24 cross runway 6/24 at the intersection of runway 15/33 and runway 6/24. Monitor 123.3 for crossing advisories. **BE EXTREMELY CAUTIOUS** when crossing runway 6/24.

If runway 6 is in use, cross runway 6/24 at the intersection of runway 15/33 and runway 6/24. Marshallsers will be present at the intersection to assist in spotting traffic. Monitor 123.3 for crossing advisories. **BE EXTREMELY CAUTIOUS** when crossing runway 6/24.

PROVIDENCE APPROACH FREQUENCIES: RUNWAY 23 IN USE



**Bradley
Approach
119.0**

**Boston
Approach
127.2**

**Cape
Approach
118.2**

**Providence
Approach
127.9**

**Bradley
Approach
127.8**

Providence Approach 123.67

**Providence
Approach
128.7**

**Cape
Approach
119.7**

**New York
Approach
124.07**

Providence Approach 119.45

**New York
Approach
125.97**

FOR REFERENCE ONLY

PROVIDENCE APPROACH FREQUENCIES: RUNWAY 5 IN USE



**Bradley Approach
119.0**

**Boston Approach
127.2**

**Cape Approach
118.2**

Providence Approach 123.67

**Bradley Approach
127.8**

**Providence Approach
128.7**

**Providence Approach
127.9**

**Cape Approach
119.7**

**New York Approach
124.07**

Providence Approach 119.45

**New York Approach
125.97**

FOR REFERENCE ONLY

PLYMOUTH REGIONAL FLY-IN/VFR ARRIVAL PROCEDURE

**Fly 2000' MSL @ 90 knots
or 2500' MSL @ 135 knots**

Hopedale Industrial

Mansfield

Plymouth

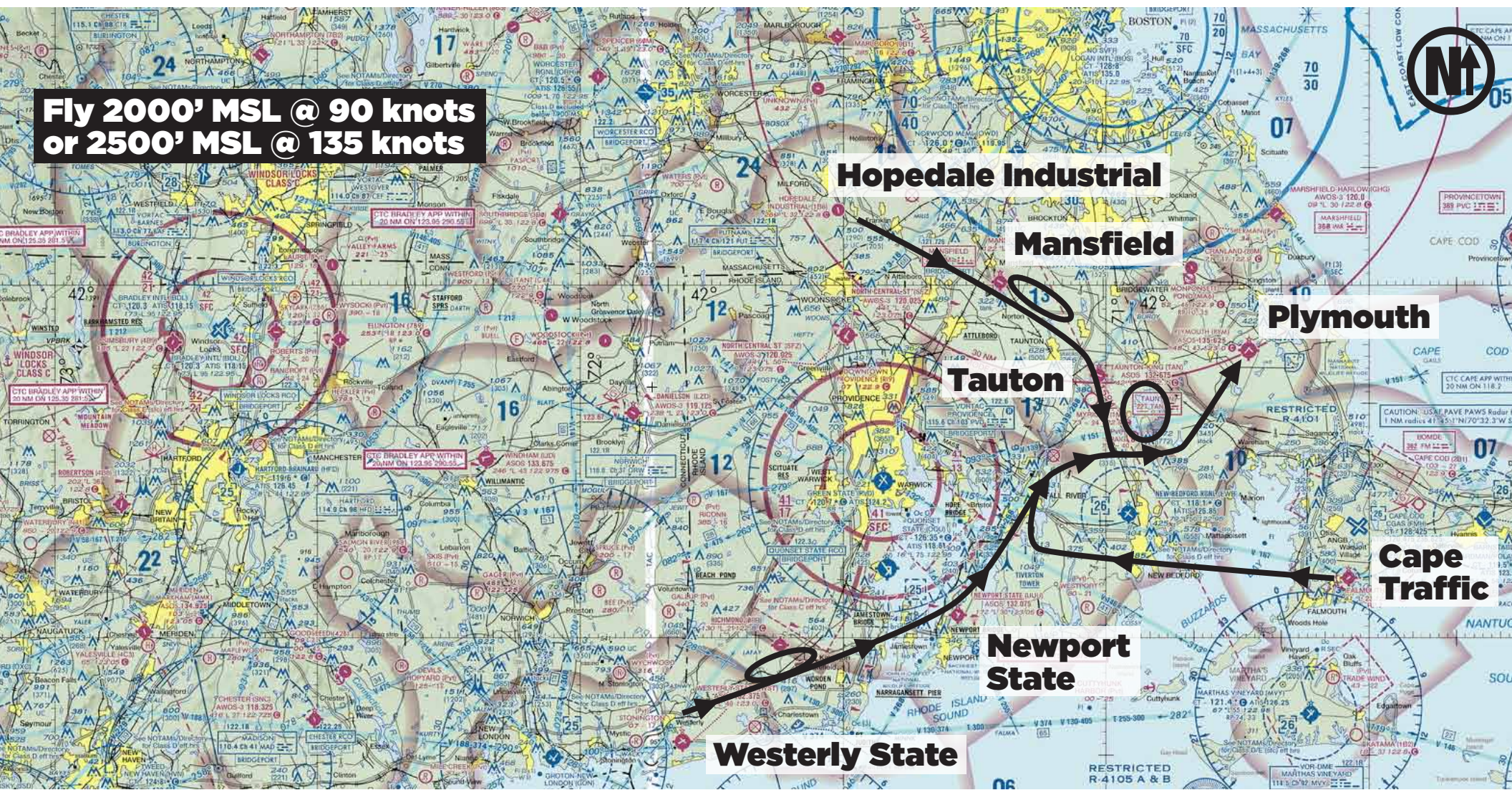
Taunton

**Cape
Traffic**

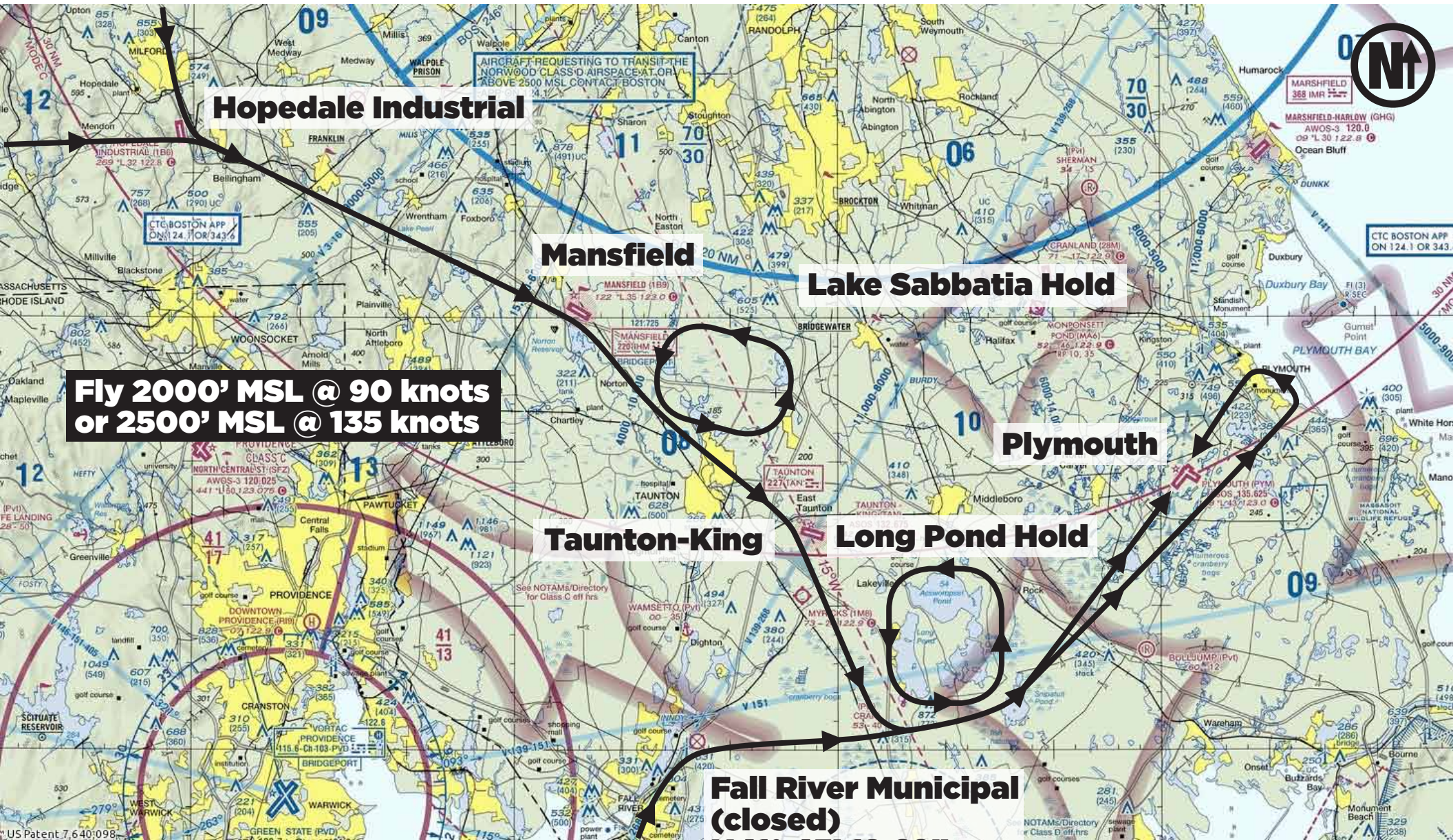
**Newport
State**

Westerly State

FOR REFERENCE ONLY



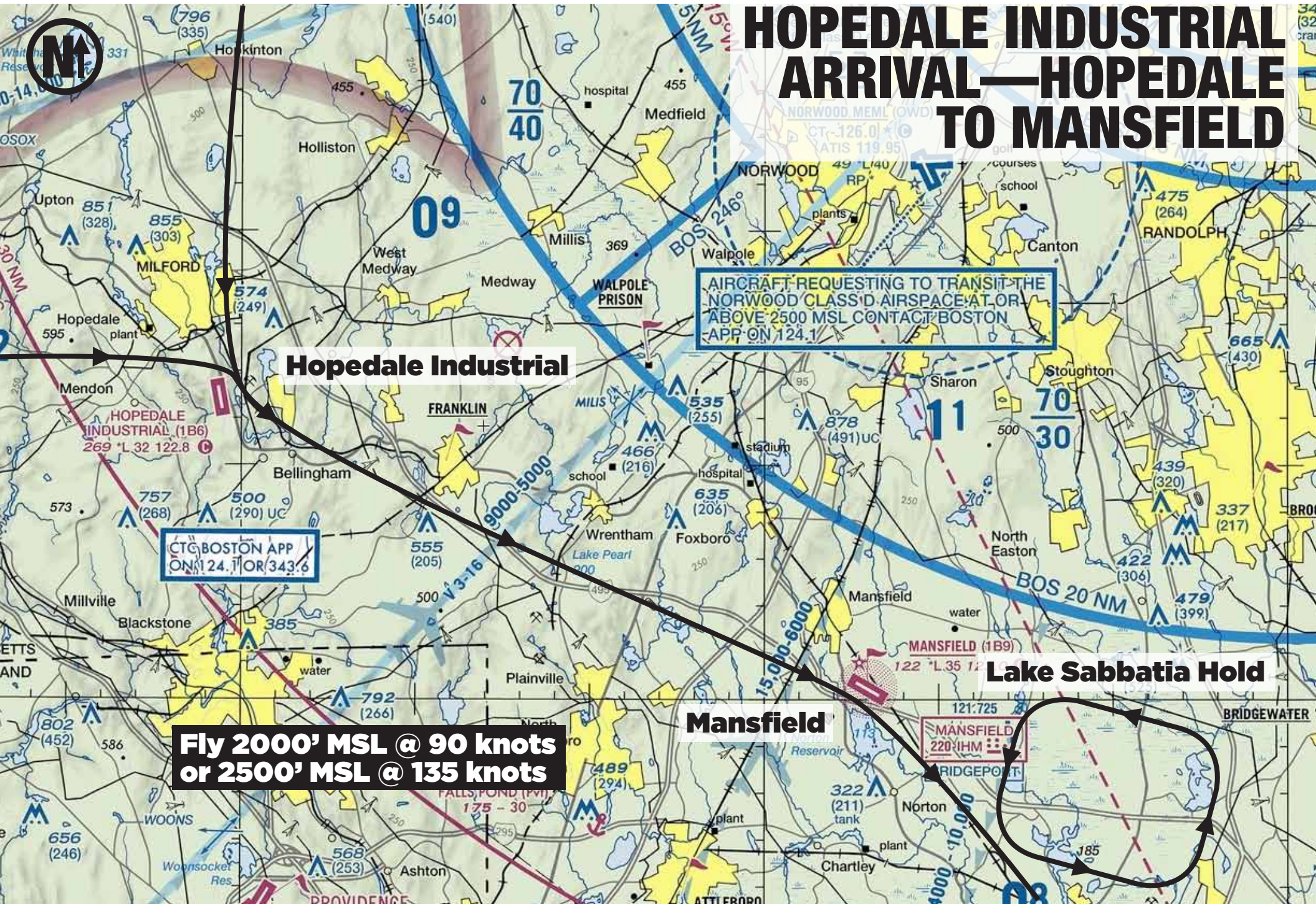
PLYMOUTH REGIONAL FLY-IN/VFR ARRIVAL PROCEDURE



**Fly 2000' MSL @ 90 knots
or 2500' MSL @ 135 knots**

**Fall River Municipal
(closed)
N41° 45' 18.69"
W71° 06' 36.24"**

HOPEDALE INDUSTRIAL ARRIVAL—HOPEDALE TO MANSFIELD



Hopedale Industrial

AIRCRAFT REQUESTING TO TRANSIT THE NORWOOD CLASS D AIRSPACE AT OR ABOVE 2500 MSL CONTACT BOSTON APP ON 124.1

CTG BOSTON APP ON 124.1 OR 343.6

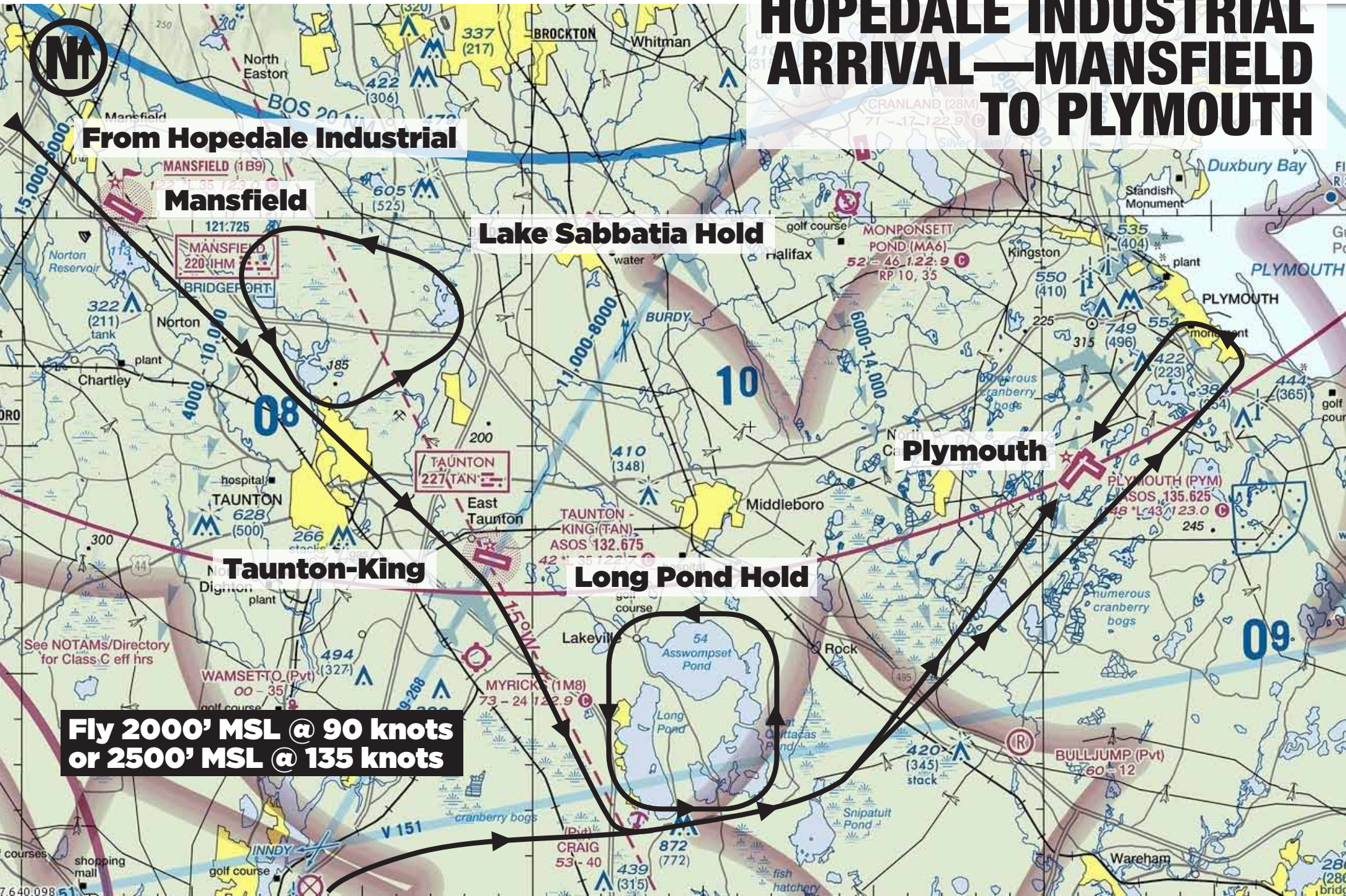
**Fly 2000' MSL @ 90 knots
or 2500' MSL @ 135 knots**

Lake Sabbatia Hold

Mansfield

MANSFIELD 220 IHM

HOPEDALE INDUSTRIAL ARRIVAL—MANSFIELD TO PLYMOUTH

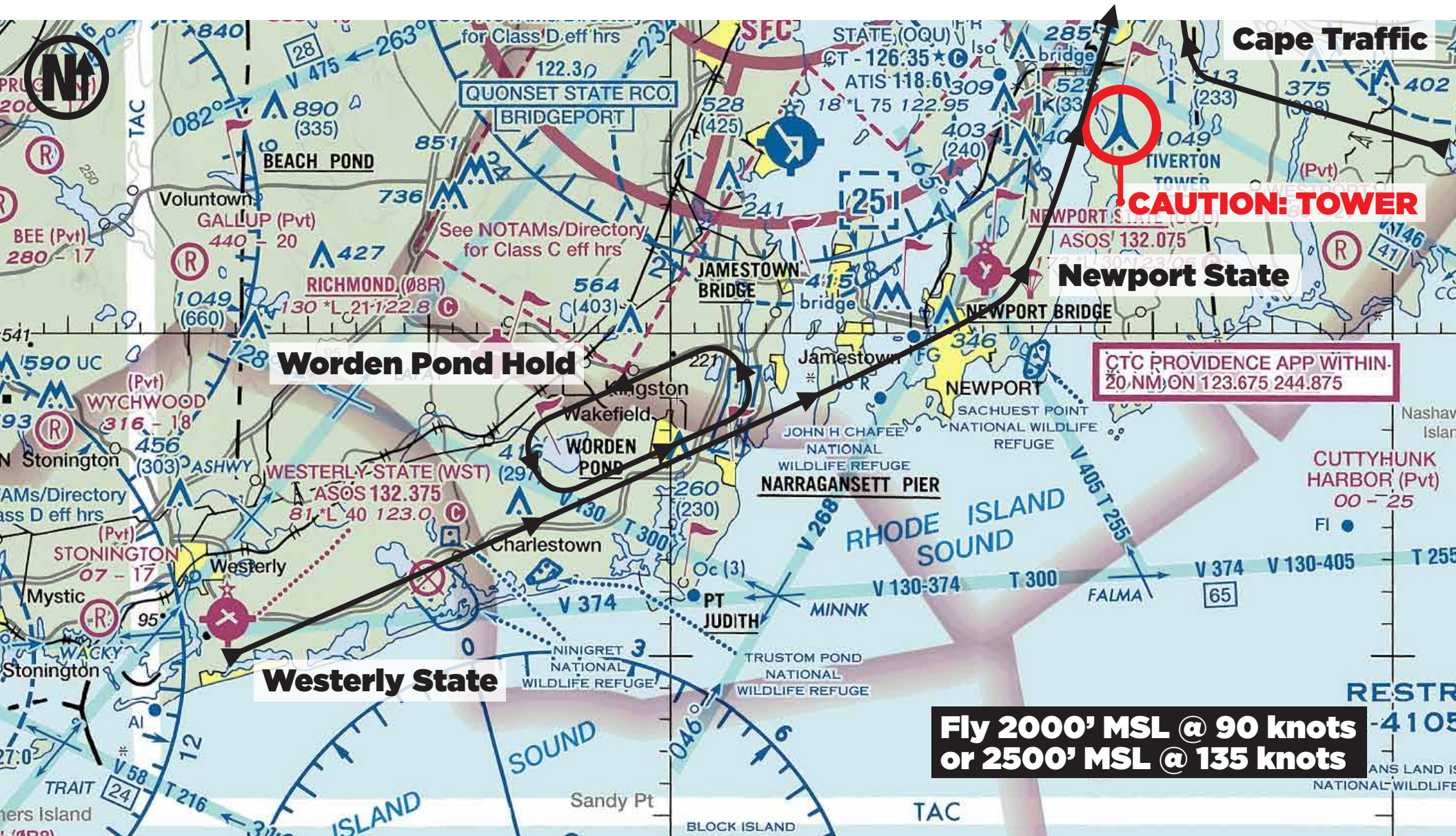


**Fly 2000' MSL @ 90 knots
or 2500' MSL @ 135 knots**

FOR REFERENCE ONLY

From Newport State

WESTERLY STATE ARRIVAL—WESTERLY ST. TO NEWPORT ST.



Cape Traffic

CAUTION: TOWER

Newport State

Worden Pond Hold

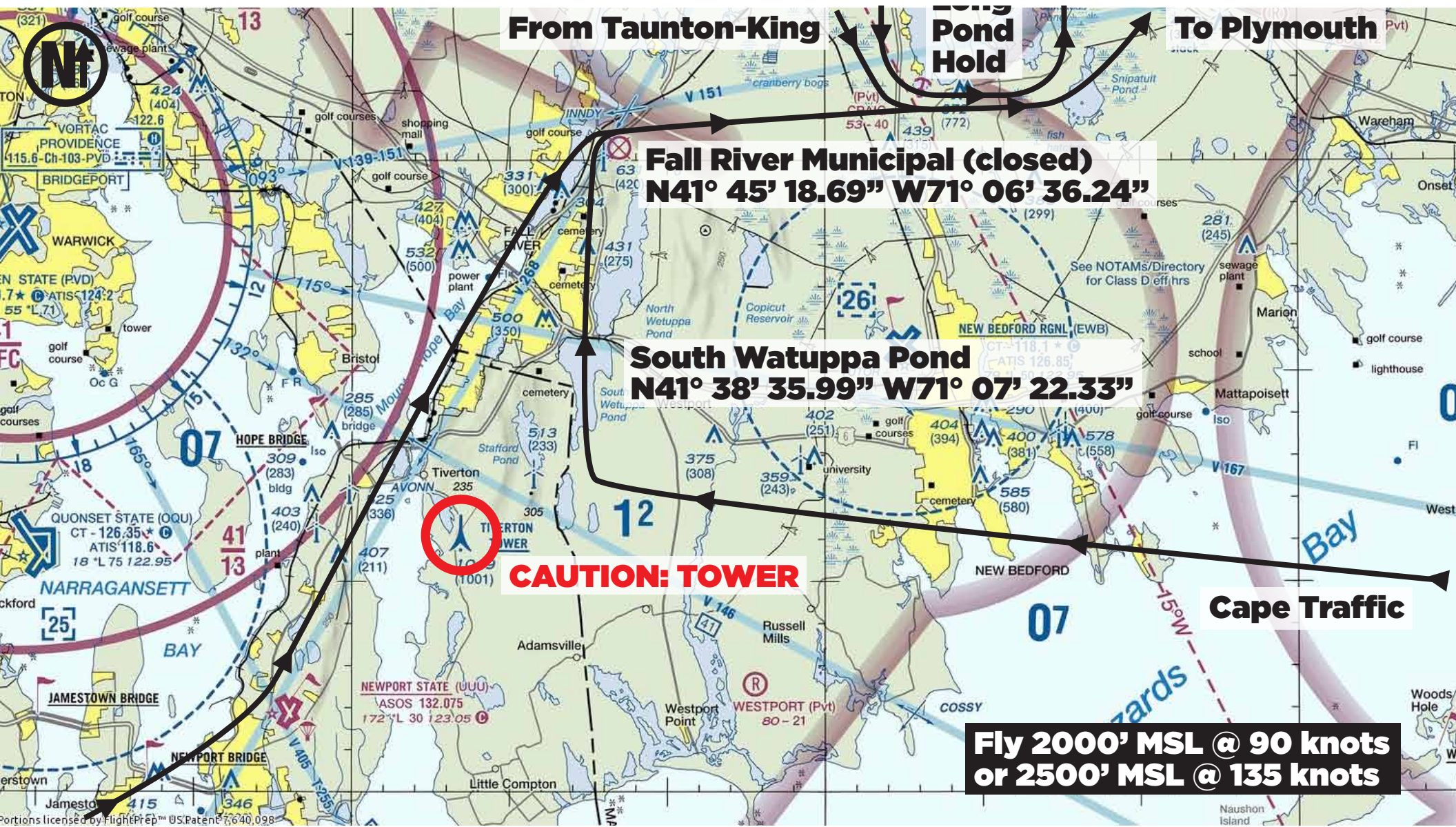
Westerly State

CTC PROVIDENCE APP WITHIN 20 NM ON 123.675 244.875

**Fly 2000' MSL @ 90 knots
or 2500' MSL @ 135 knots**

FOR REFERENCE ONLY

WESTERLY STATE ARRIVAL—NEWPORT ST. TO LONG POND



From Taunton-King

Pond Hold

To Plymouth

Fall River Municipal (closed)
N41° 45' 18.69" W71° 06' 36.24"

South Watuppa Pond
N41° 38' 35.99" W71° 07' 22.33"

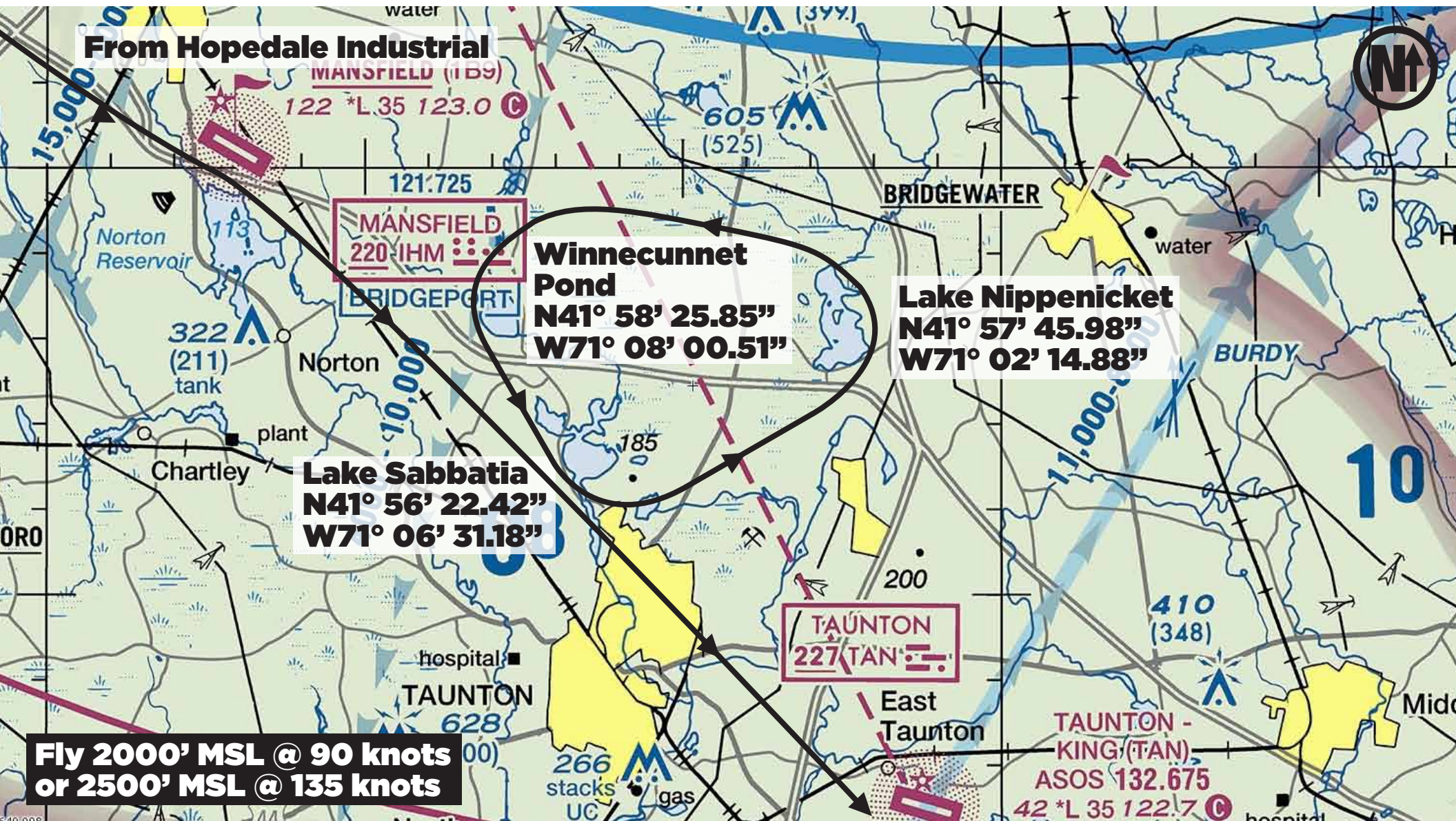
CAUTION: TOWER

Cape Traffic

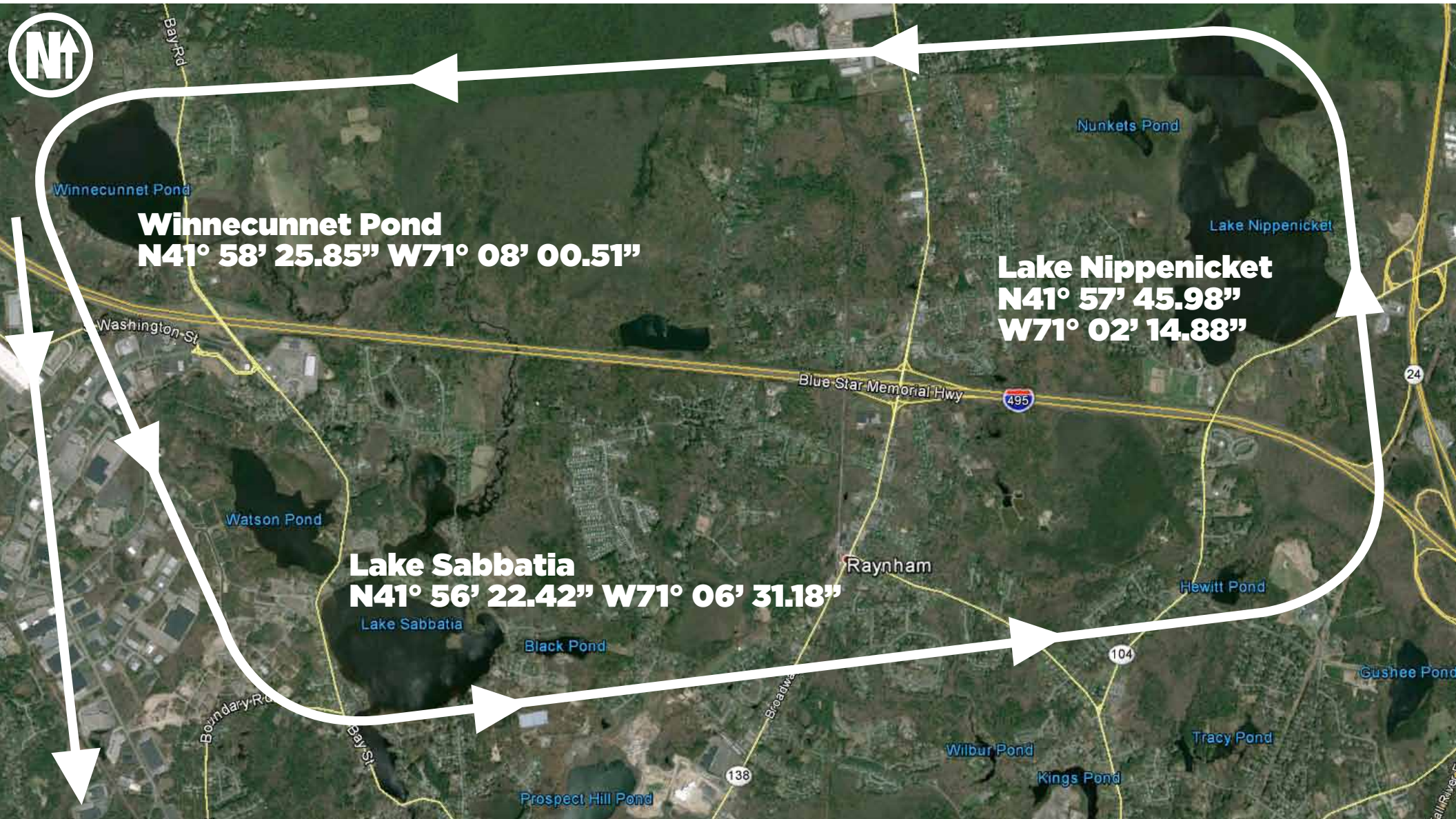
Fly 2000' MSL @ 90 knots
or 2500' MSL @ 135 knots

From Westerly State

LAKE SABBATIA VFR HOLDING PATTERN

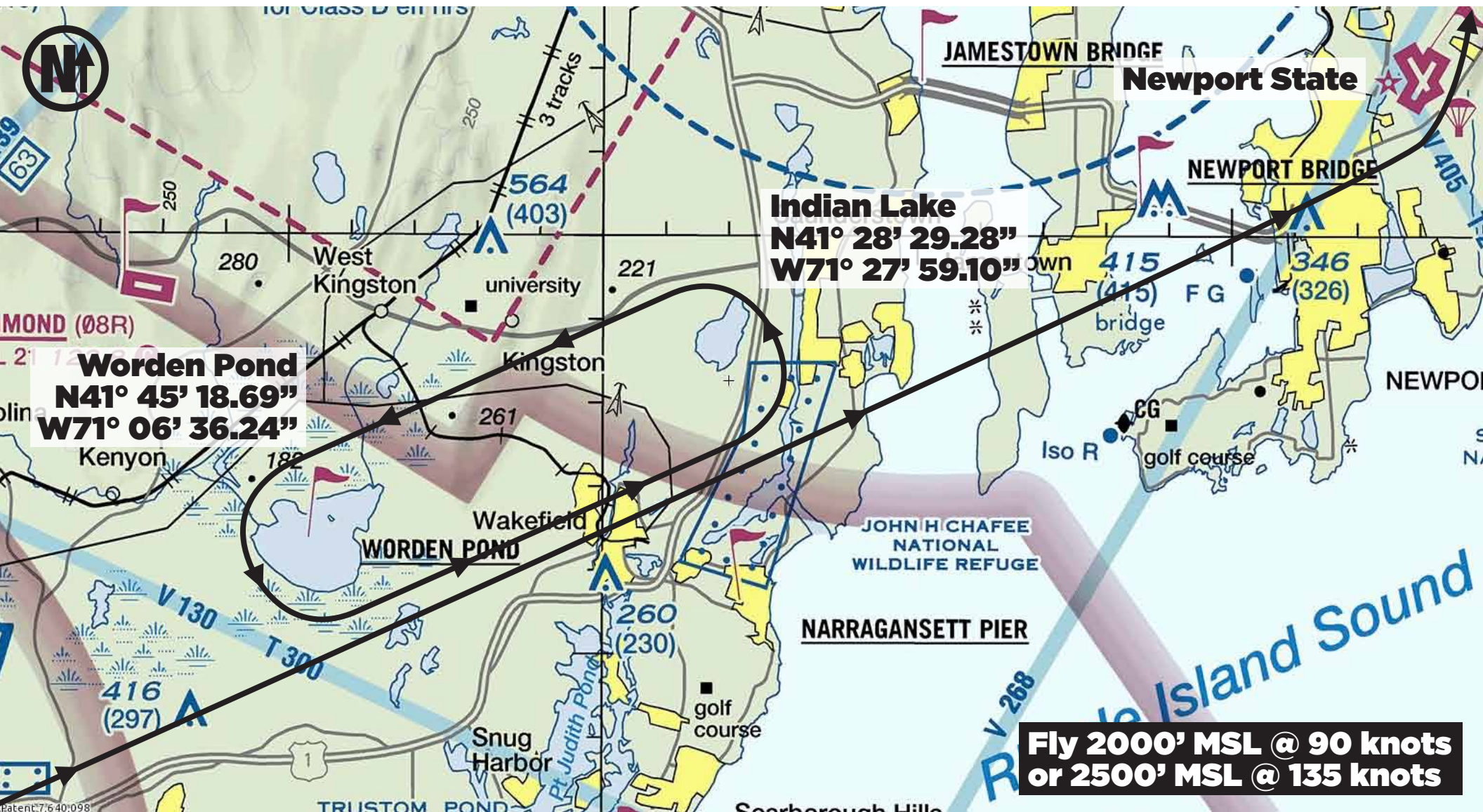


LAKE SABBATIA VFR HOLDING PATTERN



To Taunton-King

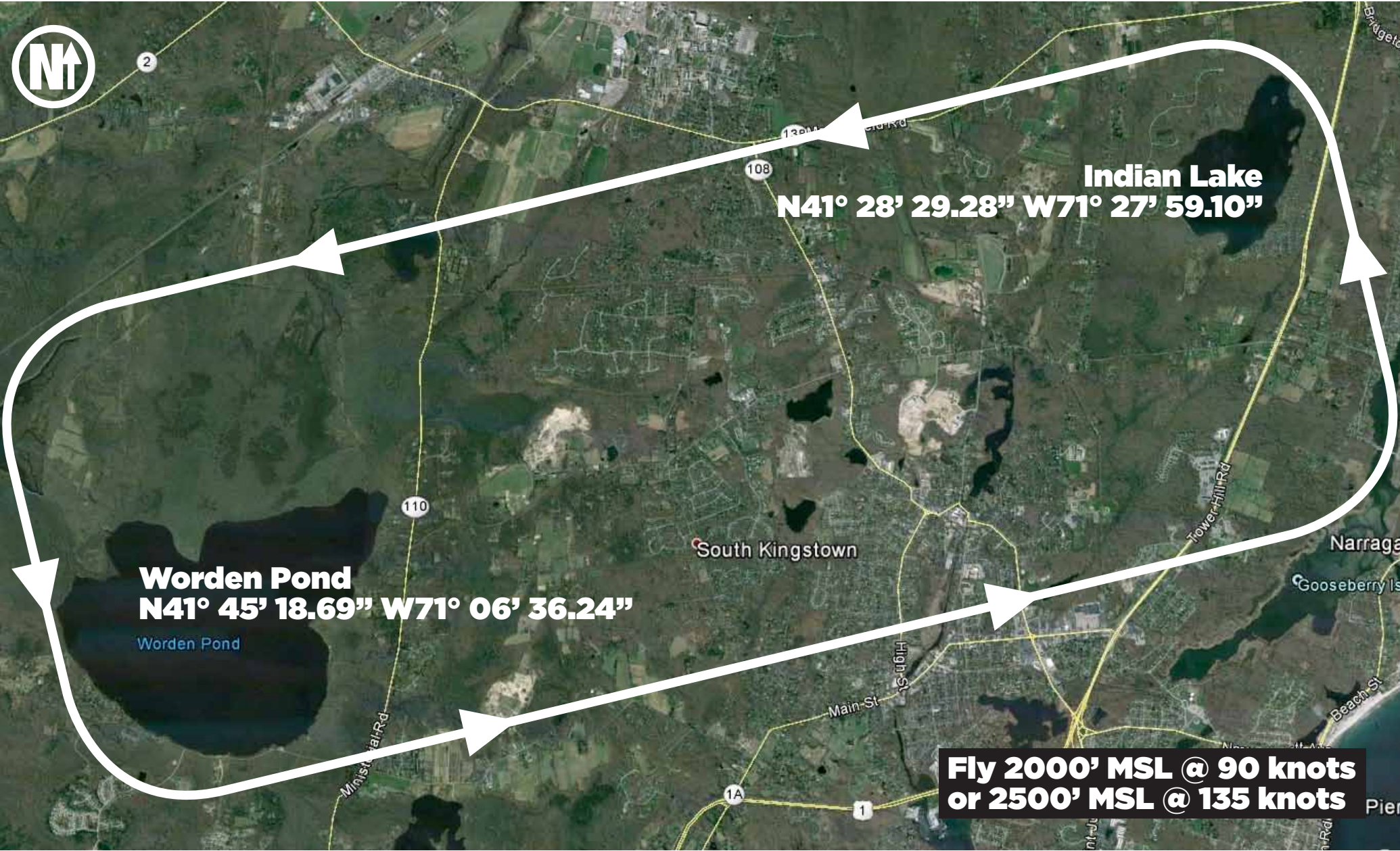
WORDEN POND/INDIAN LAKE VFR HOLDING PATTERN



From Westerly State

FOR REFERENCE ONLY

WORDEN POND/INDIAN LAKE VFR HOLDING PATTERN



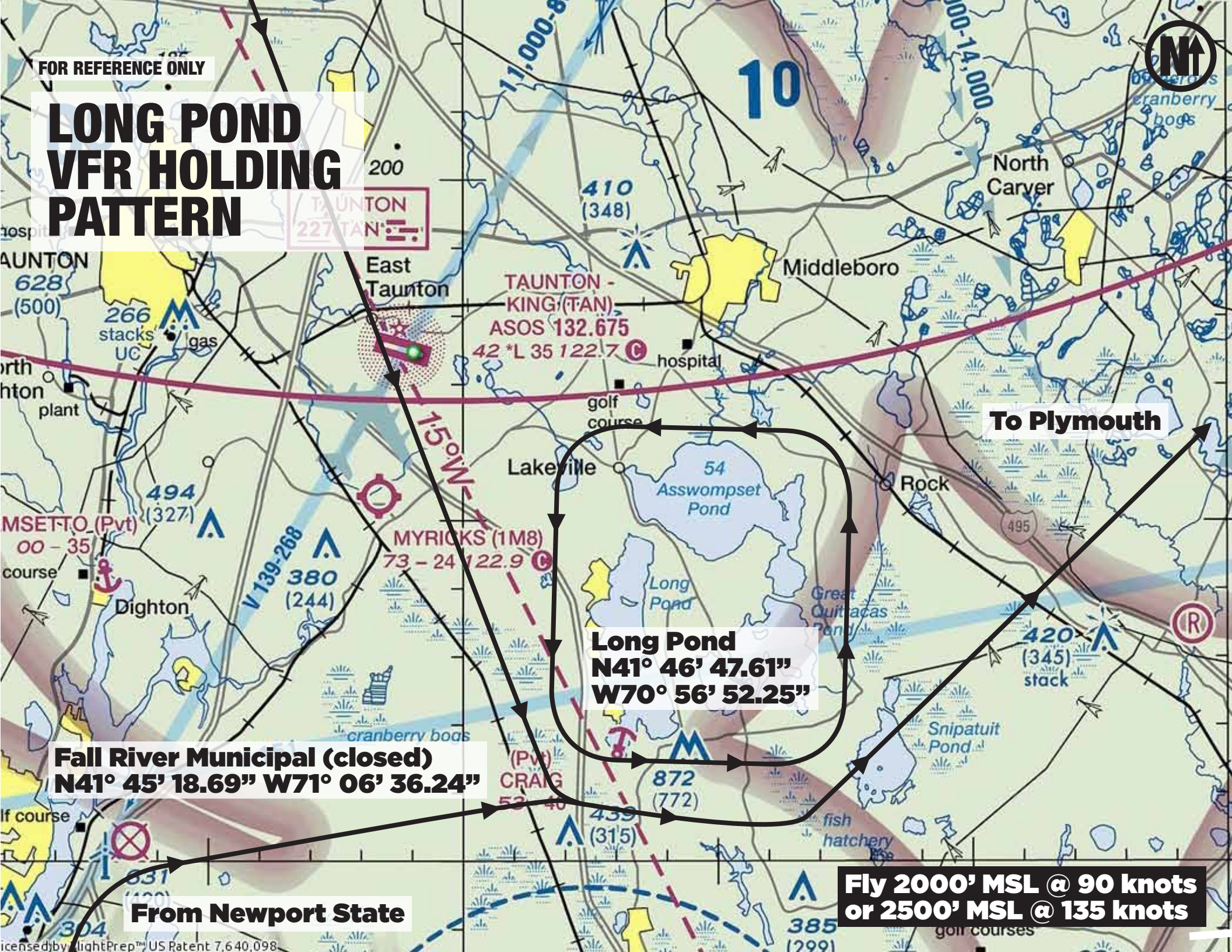
Indian Lake
N41° 28' 29.28" W71° 27' 59.10"

Worden Pond
N41° 45' 18.69" W71° 06' 36.24"

**Fly 2000' MSL @ 90 knots
or 2500' MSL @ 135 knots**

FOR REFERENCE ONLY

LONG POND VFR HOLDING PATTERN



TAUNTON
227 TAN

TAUNTON - KING (TAN)
ASOS 132.675
42 *L 35 122.7

MYRICKS (1M8)
73 - 24 122.9

Long Pond
N41° 46' 47.61"
W70° 56' 52.25"

Fall River Municipal (closed)
N41° 45' 18.69" W71° 06' 36.24"

From Newport State

Fly 2000' MSL @ 90 knots
or 2500' MSL @ 135 knots



LONG POND VFR HOLDING PATTERN

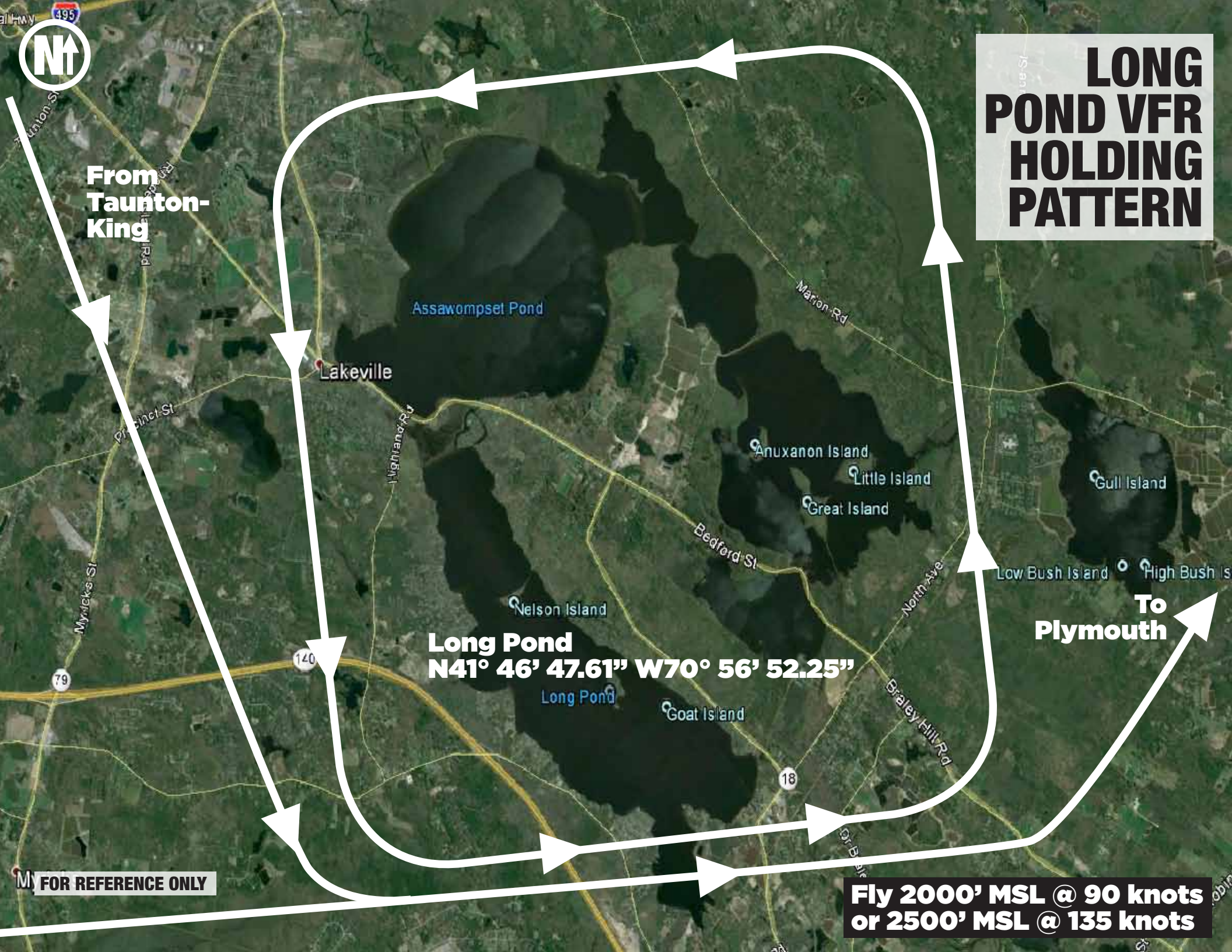
From Taunton-King

To Plymouth

Long Pond
N41° 46' 47.61" W70° 56' 52.25"

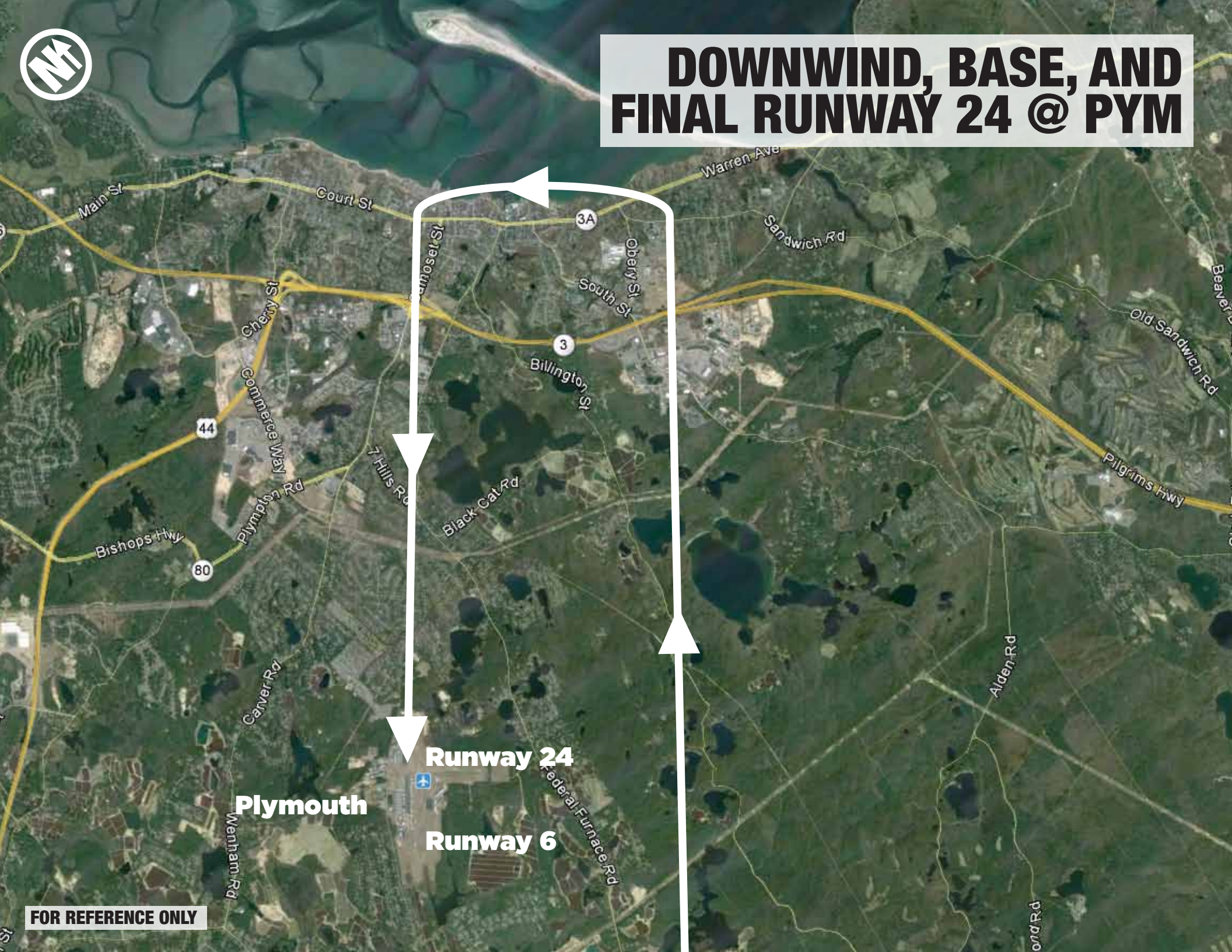
Fly 2000' MSL @ 90 knots
or 2500' MSL @ 135 knots

M FOR REFERENCE ONLY





DOWNWIND, BASE, AND FINAL RUNWAY 24 @ PYM



Plymouth

Runway 24

Runway 6

FOR REFERENCE ONLY

GO AROUND PROCEDURE— RUNWAY 6/24 PLYMOUTH (KPYM)

From Mansfield

**Go Around
Runway 6**

**Asswompset Pond
N41° 51' 15.98"
W70° 55' 46.09"**

**Go Around
Runway 24**

Landing/Takeoff 24

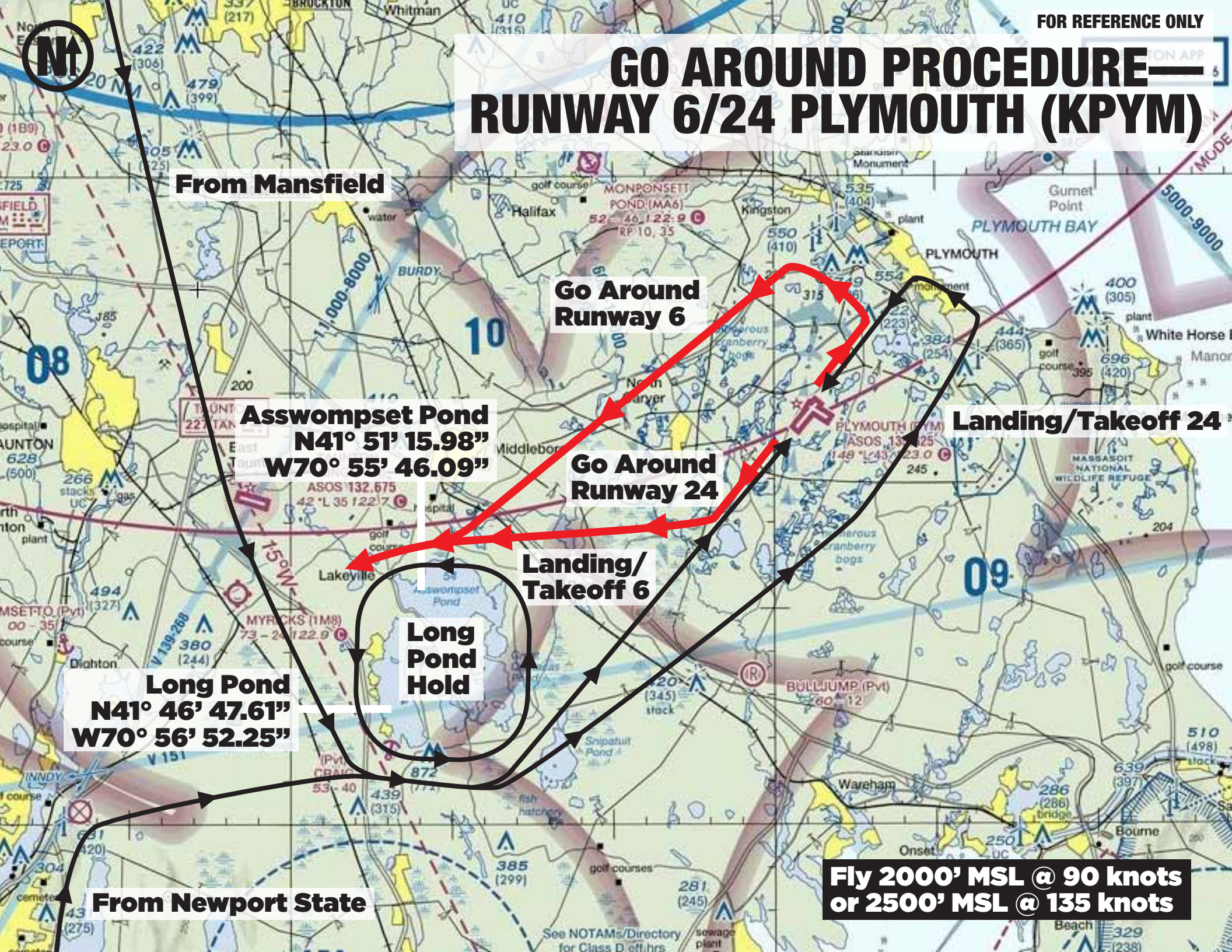
**Landing/
Takeoff 6**

**Long
Pond
Hold**

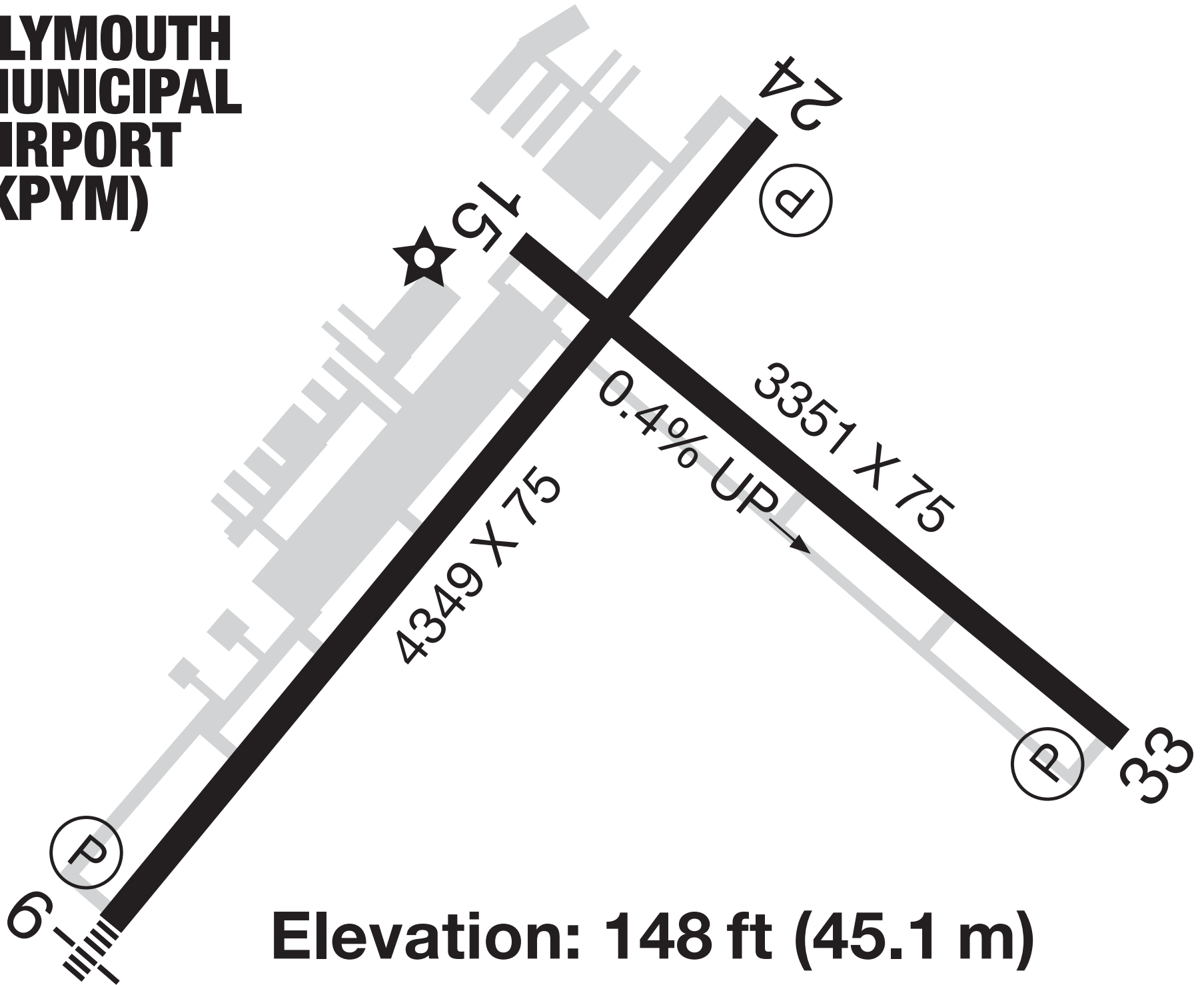
**Long Pond
N41° 46' 47.61"
W70° 56' 52.25"**

From Newport State

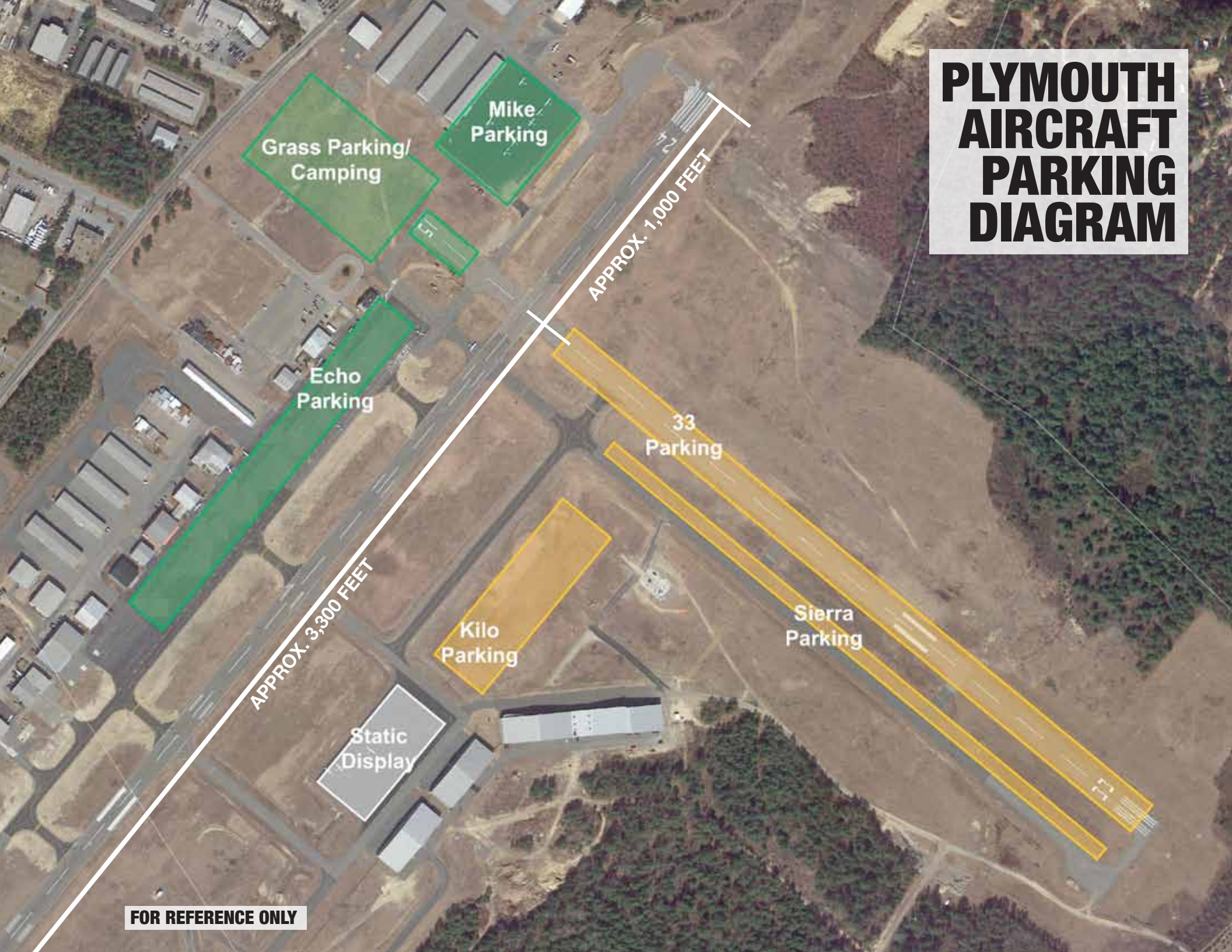
**Fly 2000' MSL @ 90 knots
or 2500' MSL @ 135 knots**



PLYMOUTH MUNICIPAL AIRPORT (KPYM)



PLYMOUTH AIRCRAFT PARKING DIAGRAM



Grass Parking/
Camping

Mike
Parking

APPROX. 1,000 FEET

Echo
Parking

33
Parking

APPROX. 3,300 FEET

Kilo
Parking

Sierra
Parking

Static
Display

FOR REFERENCE ONLY

PLYMOUTH MUNICIPAL AIRPORT (KPYM)

Roberts Rd



FOR REFERENCE ONLY

© 2014 Google

HOPEDALE MUNICIPAL AIRPORT (1B6)



FOR REFERENCE ONLY

MANSFIELD MUNICIPAL AIRPORT (1B9)



FOR REFERENCE ONLY

TAUNTON-KING MUNICIPAL AIRPORT (KTAN)



WESTERLY STATE AIRPORT (KWST)



FOR REFERENCE ONLY

NEWPORT STATE AIRPORT (KUUU)



FOR REFERENCE ONLY

NEW BEDFORD REGIONAL AIRPORT (KEWB)



FOR REFERENCE ONLY

OLD FALL RIVER MUNICIPAL AIRPORT (CLOSED)



FOR REFERENCE ONLY