

**KOUN**  
WESTHEIMER AIRPORT



# FLY-IN NOTAM

**NORMAN, OK**

**09/08**

**09/09**

**17**

## SPECIAL FLIGHT PROCEDURES EFFECTIVE

12:00 Noon CDT until 7:30 PM CDT Thursday, September 7, 2017

7:00 AM CDT until 7:30 PM CDT Friday, September 8, 2017

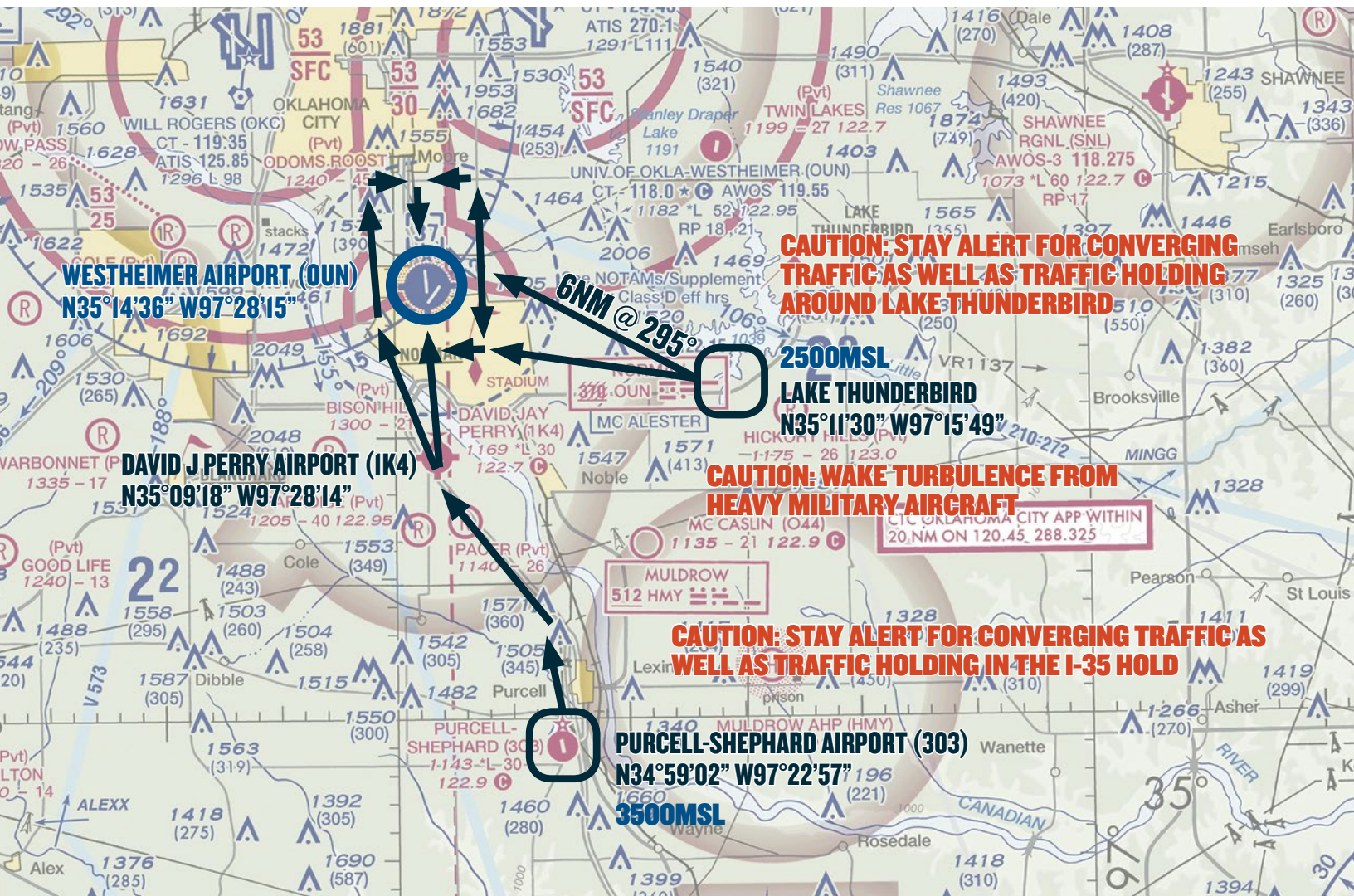
7:00 AM CDT until 6:00 PM CDT Saturday, September 9, 2017



The University of Oklahoma  
**Max Westheimer Airport**  
Norman, OK



# VFR ARRIVALS OVERVIEW



AWOS: 119.55

OKLA CITY APPROACH: 124.2

WESTHEIMER TOWER: 118.0

WESTHEIMER GROUND: 121.6

## TEMPORARY VFR PROCEDURES

Specific procedures contained within this NOTAM may be revised at the time of the event. Pilots are urged to review all applicable NOTAMs and arrival/departure procedures prior to conducting a flight to Westheimer Airport. Users are encouraged to check NOTAMs frequently to verify they possess the most current revisions. This NOTAM does not supersede restrictions pertaining to the use of airspace contained in FDC NOTAMS.

## ALL VFR ARRIVALS MUST BEGIN AT

1. Lake Thunderbird, 9 NM east of Westheimer Airport (OUN), or
2. Purcell-Shephard Airport, 15 NM southeast of Westheimer Airport (OUN)



# VFR PROCEDURES

## ARRIVALS OVER LAKE THUNDERBIRD



AWOS: 119.55

OKLA CITY APPROACH: 124.2

WESTHEIMER TOWER: 118.0

WESTHEIMER GROUND: 121.6

### CHECK WESTHEIMER AWOS ON 119.55 AS SOON AS PRACTICAL.

This procedure begins at Lake Thunderbird at **2500 feet MSL**. If not already in communication with ATC, contact Oklahoma City Approach on **124.2** prior to arriving at Lake Thunderbird. Do not proceed beyond Lake Thunderbird until in contact with Oklahoma City Approach.

**Caution: Stay alert for converging traffic.**

**Caution: Wake turbulence from heavy military aircraft on approach to Tinker AFB.**

If instructions to continue inbound have not been received or if traffic volume requires holding, follow the hold procedure as depicted in the *LAKE THUNDERBIRD*

*HOLD GRAPHIC*. All aircraft should fly **right turns** at **2500 feet MSL**.

**Caution: Stay alert for converging traffic as well as other traffic that might be holding over Lake Thunderbird.**

When holding is no longer required, aircraft should complete the hold and expect to fly direct to the intersection of US Hwy 77 and East Rock Creek Rd. The intersection is 6 NM northwest of Lake Thunderbird (2 NM east of OUN) on an approximate heading of 295°.

Begin descent to traffic pattern altitude at pilot's discretion.

**OUN TPA: 2200 feet MSL light aircraft; 2700 feet MSL multi-engine/turbine aircraft**

Expect radar services to be terminated and to be instructed to contact Westheimer

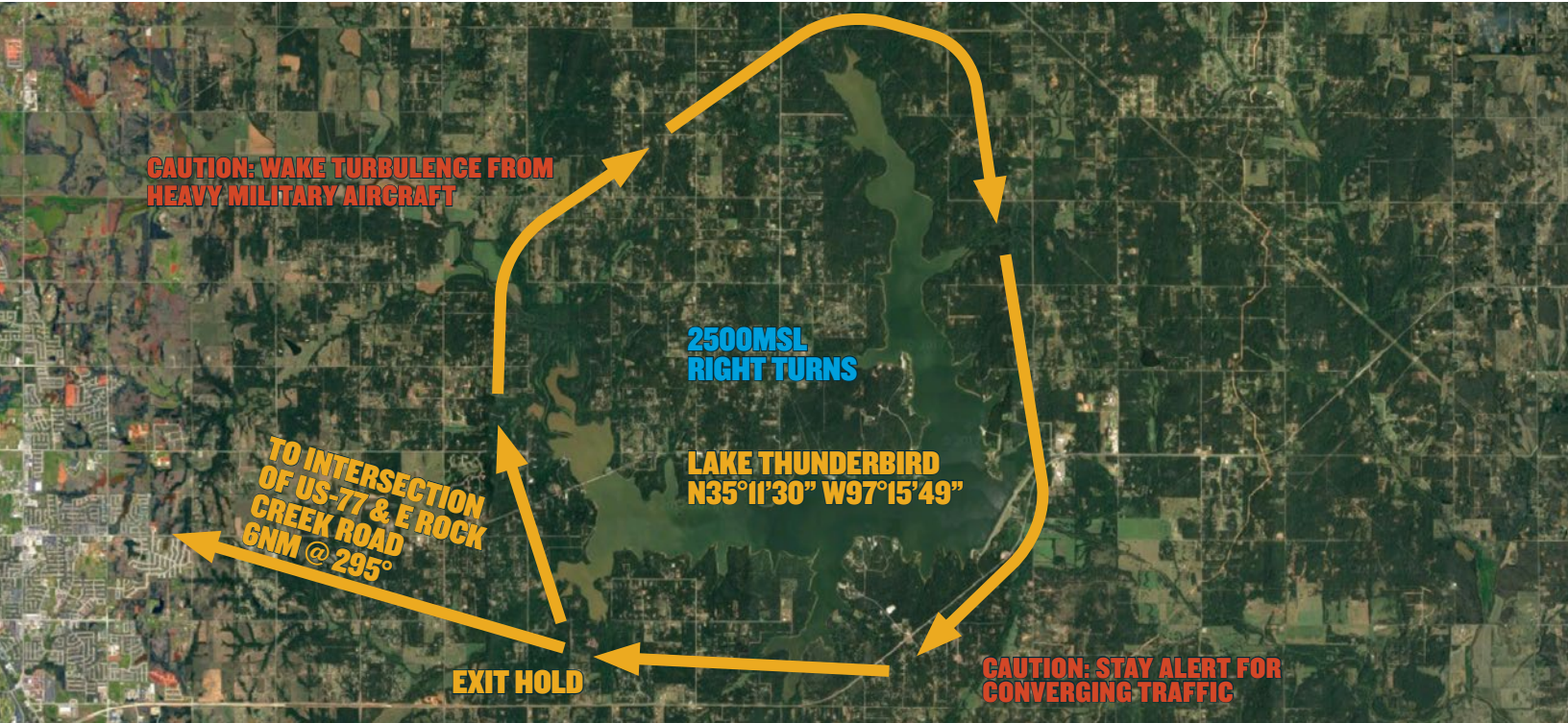
Tower on **118.0** when departing Lake Thunderbird for the intersection of US Hwy 77 and East Rock Creek Rd.

From the intersection of US Hwy 77 and East Rock Creek Rd., Westheimer Airport is 2 NM west. Depending on wind conditions, expect to fly a right base for runway 36 or a left downwind for runway 18.

After landing, do not stop on the runway unless necessary. Exit the runway as quickly and as safely as possible and continue far enough forward so as not to block subsequent arrivals. **UNLESS OTHERWISE INSTRUCTED BY ATC**, continue to taxiway Charlie and **MONITOR Ground on 121.6**. Follow instructions to the designated parking areas. Marshalls' will guide you to a parking space once you have arrived in the non-movement/aircraft parking area.



## LAKE THUNDERBIRD VFR HOLD



AWOS: 119.55

OKLA CITY APPROACH: 124.2

WESTHEIMER TOWER: 118.0

WESTHEIMER GROUND: 121.6

## ARRIVING FROM LAKE THUNDERBIRD RUNWAY 18/36



AWOS: 119.55

OKLA CITY APPROACH: 124.2

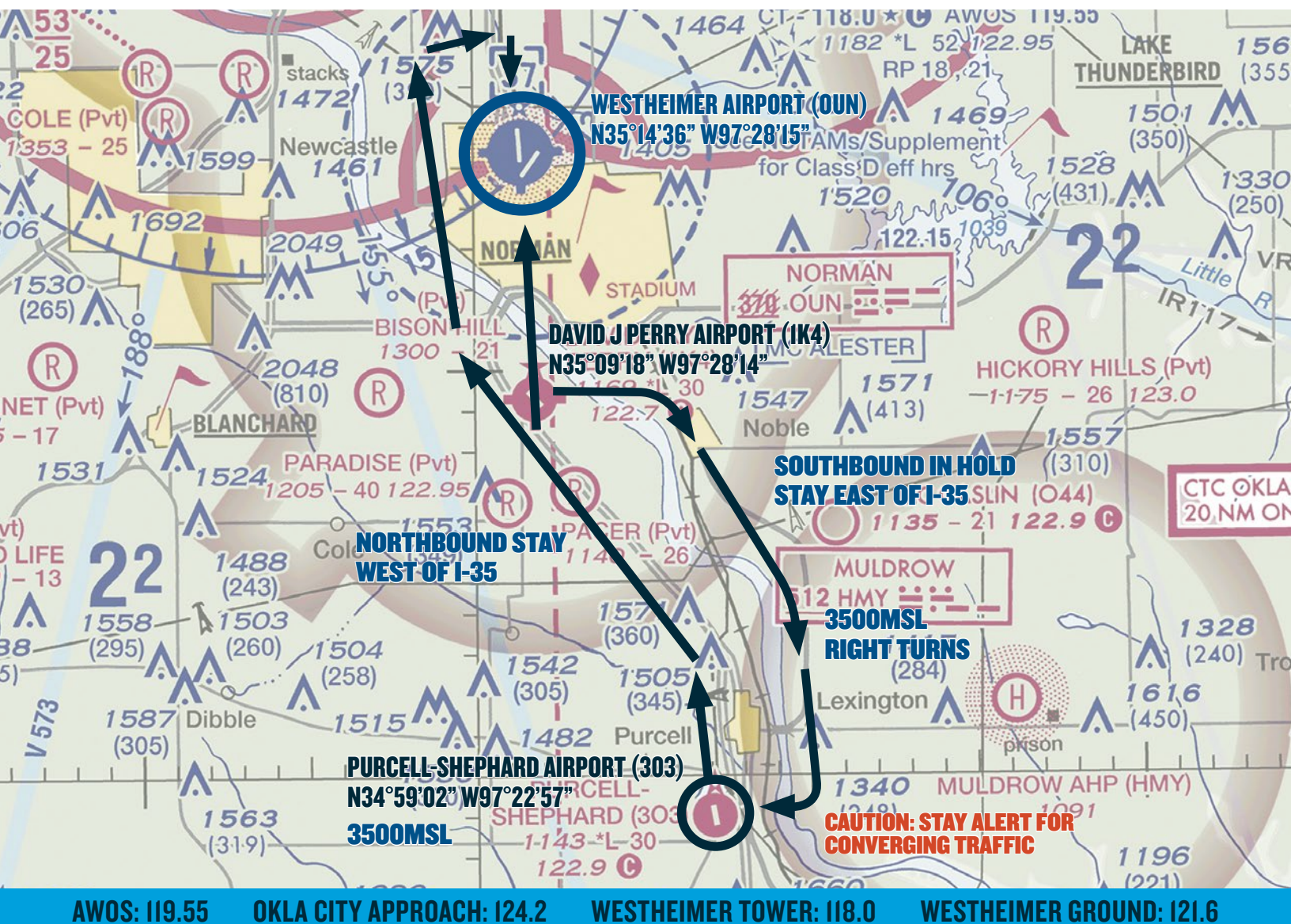
WESTHEIMER TOWER: 118.0

WESTHEIMER GROUND: 121.6



# VFR PROCEDURES

## ARRIVALS OVER PURCELL-SHEPHARD AIRPORT (303)



### CHECK WESTHEIMER AWOS ON 119.55 AS SOON AS PRACTICAL.

This procedure begins at Purcell-Shepherd Airport at **3500 feet MSL**. If not already in communication with ATC, contact Oklahoma City Approach on **124.2** prior to arriving at Purcell-Shepherd Airport. Do not proceed beyond Purcell-Shepherd Airport until in contact with Oklahoma City Approach.

**Caution: Stay alert for converging traffic.**

**Caution: Wake turbulence from heavy military aircraft on approach to Tinker AFB.**

If instructions to continue inbound have not been received or if traffic volume requires holding, follow the hold procedure as

depicted in the *I-35 HOLD GRAPHIC*.

All aircraft should fly **right turns** at **3500 feet MSL**.

**Caution: Stay alert for converging traffic as well as other traffic that might be holding in the I-35 Hold.**

When holding is no longer required, aircraft should complete the hold and continue inbound along Interstate 35 toward David Jay Perry Airport. Westheimer Airport is approximately 5 NM north of David Jay Perry Airport.

Begin descent to traffic pattern altitude at pilot's discretion.

**OUN TPA: 2200 feet MSL light aircraft; 2700 feet MSL multi-engine/turbine aircraft**

Expect radar services to be terminated and to be instructed to contact Westheimer Tower on **118.0** prior to arriving over David Jay Perry Airport.

Depending on wind conditions, expect to fly a straight in final for runway 36 or a right downwind for runway 18.

After landing, do not stop on the runway unless necessary. Exit the runway as quickly and as safely as possible and continue far enough forward so as not to block subsequent arrivals. **UNLESS OTHERWISE INSTRUCTED BY ATC**, continue to taxiway Charlie and **MONITOR Ground on 121.6**. Follow instructions to the designated parking areas. Marshalls' will guide you to a parking space once you have arrived in the non-movement/aircraft parking area.

AWOS: 119.55

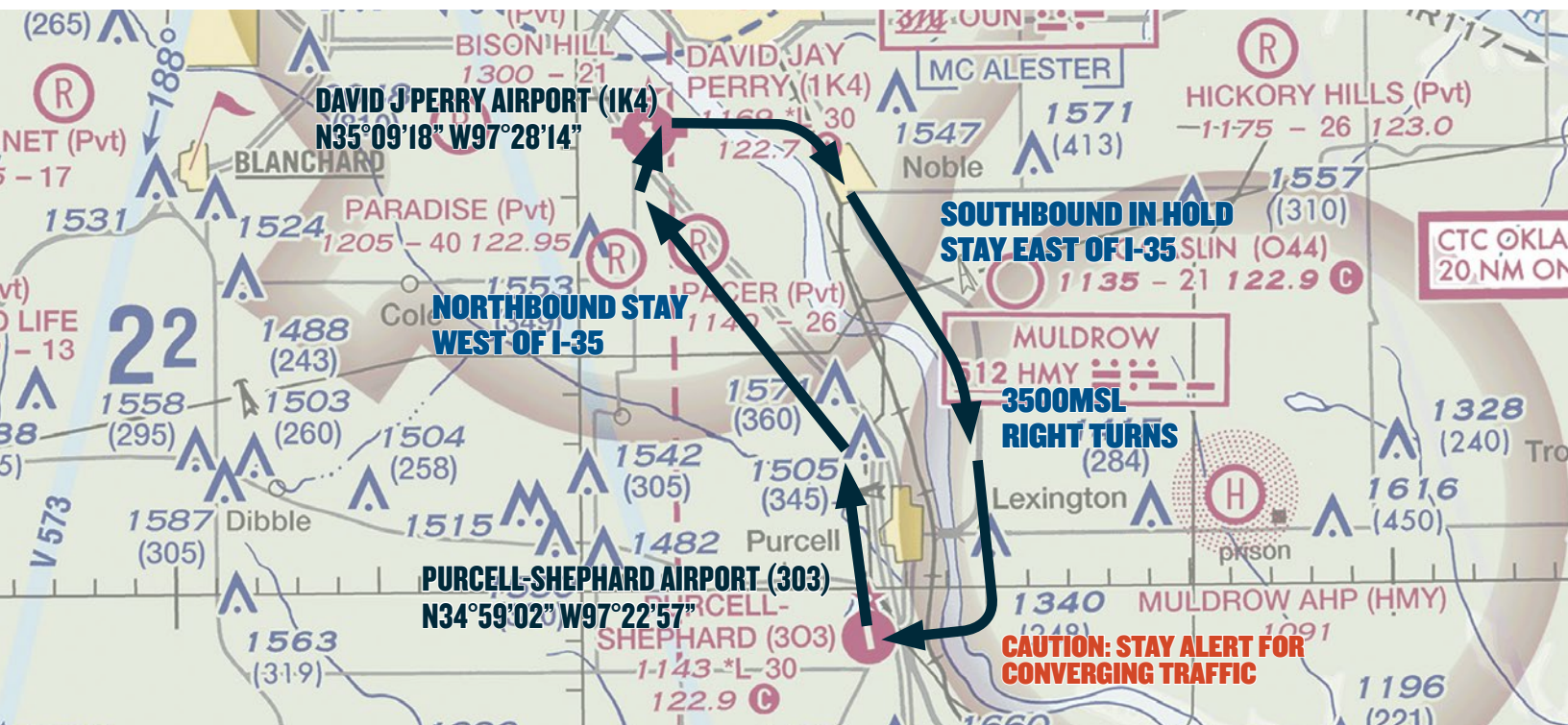
OKLA CITY APPROACH: 124.2

WESTHEIMER TOWER: 118.0

WESTHEIMER GROUND: 121.6



## I-35 VFR HOLD



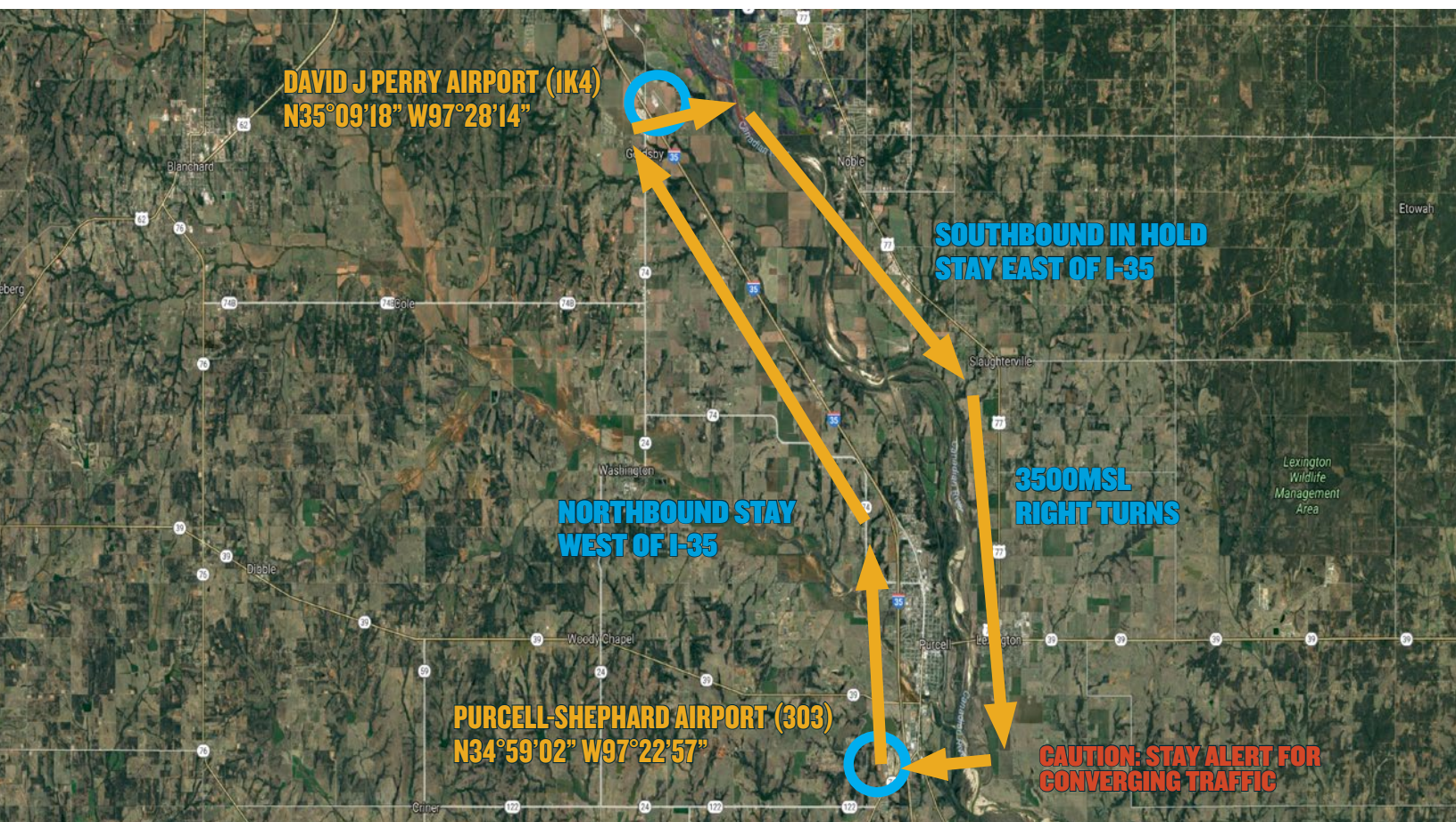
AWOS: 119.55

OKLA CITY APPROACH: 124.2

WESTHEIMER TOWER: 118.0

WESTHEIMER GROUND: 121.6

## I-35 VFR HOLD



AWOS: 119.55

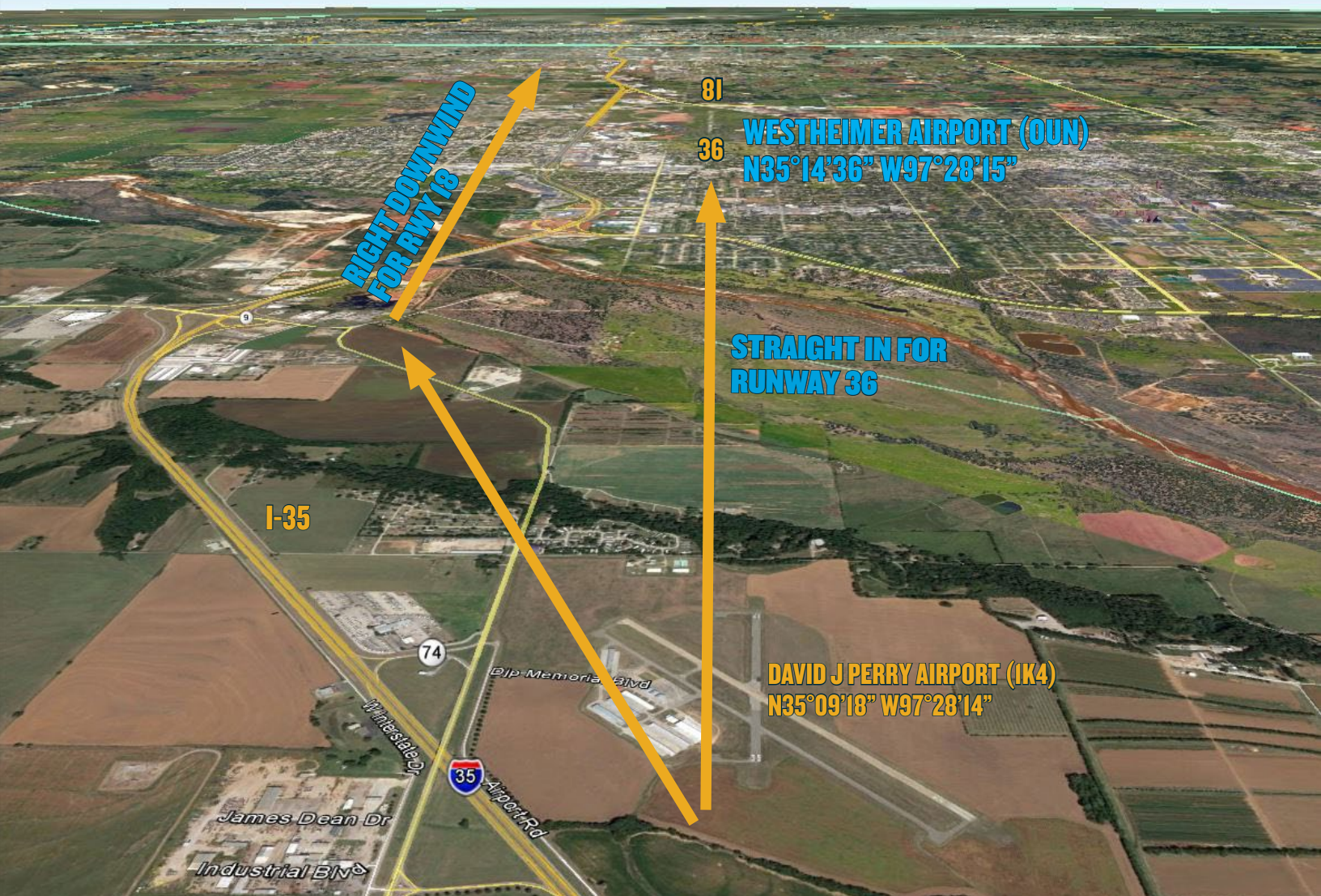
OKLA CITY APPROACH: 124.2

WESTHEIMER TOWER: 118.0

WESTHEIMER GROUND: 121.6



# DAVID J PERRY AIRPORT (IK4) TO WESTHEIMER AIRPORT (OUN)



AWOS: 119.55

OKLA CITY APPROACH: 124.2

WESTHEIMER TOWER: 118.0

WESTHEIMER GROUND: 121.6

## IFR DELAYS

IFR reservations are not required, however due to heavy arrival traffic for the event IFR arrivals and departures will be severely limited. IFR separation requirements may cause delays when arrival rates exceed airport capacity. Pilots on an IFR flight plan should be prepared for potential holding. IFR flight plans to Westheimer Airport should be filed at **at least 2 hours** prior to proposed departure time. **Cancelling IFR and proceeding VFR along designated arrival routes is highly recommended if practical.**

## AIRPORT CLOSURE

Westheimer Airport will be closed during the following hours during the AOPA Fly-In:

7:30 PM CDT Thursday, September 7, 2017 until 7:00 AM CDT Friday, September 8, 2017

7:30 PM CDT Friday, September 8, 2017 until 7:00 AM CDT Saturday, September 9, 2017

A **Prior Permission Required (PPR)** number is mandatory to land or depart during those times. **To obtain a PPR number, please call 405-325-7233.**

Westheimer Airport will be closed for arrivals on Saturday, September 9 from 3:00 PM to 6:00 PM local time during the expected heavy departure window.

## AEROBATIC DEMONSTRATION

There will be an aerobatic demonstration between 12:00 Noon-1:00 PM local on Saturday, September 9, 2017 during the AOPA Fly-in. Arrivals and departures **will be stopped** for the duration of the demonstration. Please plan accordingly.

## LOCAL TRAINING AND PRACTICE APPROACHES

Local traffic pattern, closed traffic training, and practice instrument approaches **will not be available** at Westheimer Airport (OUN) during the AOPA Fly-In.

## NO RADIO AIRCRAFT

Due to high density traffic, aircraft operations without a radio are not recommended.

## STUDENT PILOTS

Due to high density traffic, solo student pilot operations are not recommended.

## CAUTIONS

Possible lengthy delays associated with heavy arrival and departure times. Heavy arrivals expected 8:00 AM—11:00 AM Friday and Saturday. Heavy departures expected 3:00 PM—6:00 PM on Saturday.

Wake turbulence from heavy military aircraft on approach to Tinker AFB (TIK)

**Class C Airspace:** Will Rogers World Airport (OKC)

**Class C Airspace:** Tinker Air Force Base (TIK)

**Class D Airspace:** Westheimer Airport (OUN)

**Class D Airspace:** Wiley Post Airport (PWA)

Numerous special use airspace near Westheimer Airport (OUN)

High density student operations near Westheimer Airport (OUN)

Numerous unpublished military training routes near Sheppard AFB/Wichita Falls Municipal Airport (SPS)

Deer and coyotes on and near the vicinity of runways



# FREQUENCY & WAYPOINT INFORMATION

## ENROUTE FREQUENCIES

Oklahoma City Approach—Lake Thunderbird Arrival	124.2
Oklahoma City Approach—Purcell-Shephard Airport Arrival	124.2

## WESTHEIMER AIRPORT FREQUENCIES

Westheimer AWOS	119.55
AWOS telephone number	405-325-7302
Westheimer Tower	118.0
Westheimer Ground	121.6
Westheimer CTAF	118.0
Oklahoma City Approach/Departure	124.2
UNICOM	122.95

## SPECIFIC LATITUDE/LONGITUDE COORDINATES

### Arrivals Over Lake Thunderbird

Lake Thunderbird	N35°11'30" / W97°15'49"
Intersection US Hwy 77/E Rock Creek Rd	N35°14'50" / W97°25'24"
Westheimer Airport (OUN)	N35°14'36" / W97°28'15"

### Arrivals Over Purcell-Shephard Airport

Purcell-Shephard Airport (3O3)	N34°59'02" / W97°22'57"
David J Perry Airport (1K4)	N35°09'18" / W97°28'14"
Westheimer Airport (OUN)	N35°14'36" / W97°28'15"

### Departing Westheimer Airport

David J Perry Airport (1K4)	N35°09'18" / W97°28'14"
Bridge Creek	N35°14'06" / W97°44'23"
Lake Thunderbird (North)	N35°11'30" / W97°15'49"



# GENERAL INFORMATION

## WESTHEIMER AIRPORT (OUN)



TOWER PHONE: 405.360.0231

AWOS: 119.55

OKLA CITY APPROACH: 124.2

WESTHEIMER TOWER: 118.0

WESTHEIMER GROUND: 121.6

### Non-movement areas in effect during the following times:

12:00 Noon CDT Thursday, September 7, 2017 until 6:00 PM CDT Saturday, September 9, 2017

### PARKING AREAS

- When operating in the parking areas, pilots are encouraged to be extra alert for taxiing aircraft, aircraft with engine(s) running, and vehicle/pedestrian traffic.
- Marshalls will be assisting aircraft to and from parking areas and run-up areas.
- For safety reasons, high RPM engine running is prohibited in designated parking areas. For departure, it is recommended that pilots conduct their run-up procedures in queue if practical.
- Please review the parking map prior to landing and departure.

### VEHICULAR TRAFFIC

Vehicles are not allowed on ramps except those belonging to airport operators and tenants, and exhibitors participating in the AOPA Westheimer Airport Fly-In.

### PRE-FLIGHT PLANNING

- Please ensure that you have reviewed the special flight information, departure procedures, and temporary taxi procedures prior to engine start.
- High density traffic is expected Friday and Saturday morning. Consider arriving during off-peak hours.



# DEPARTURE PROCEDURES

## WESTHEIMER AIRPORT (OUN)

### IFR DEPARTURES

Aircraft desiring to depart IFR should contact Westheimer Ground on **121.6** prior to engine start to obtain an IFR clearance. Advise Westheimer Ground on **121.6** when ready to taxi.

### VFR DEPARTURES

**VFR Flight Following:** Pilots wanting VFR flight-following should make the request to the appropriate ATC facility when clear of OUN airspace. *VFR Traffic Advisories/Flight Following will be provided on a workload-permitting basis only.*

**Prior to Start-up:** Please ensure that you have reviewed the special flight information, departure procedures, and temporary taxi procedures prior to engine start. Check AWOS on **119.55**.

**Engine Start:** Locate a marshaller to monitor engine start.

**Run-up:** If practical, it is recommended that you conduct your run-up while in queue for departure. Please consider propeller blast during your run-up.

**Taxi:** Follow instructions from Marshalls and contact Westheimer Ground on **121.6** when holding short of taxiway Charlie. (Monitor ground control frequency prior to transmitting.)

**Departure:** Contact Westheimer Tower on **118.0** when number 1 for departure. Be prepared for immediate take-off.

#### Departing runway 36

- If destination is 001° through 180°, turn right after departure and fly an approximate heading of 085° to the northern tip of Lake Thunderbird. Turn on course when clear of Class C airspace.
- If destination is 181° through 360°, turn left after departure and fly an approximate heading of 252° to Bridge Creek. Turn on course when clear of Class C airspace.

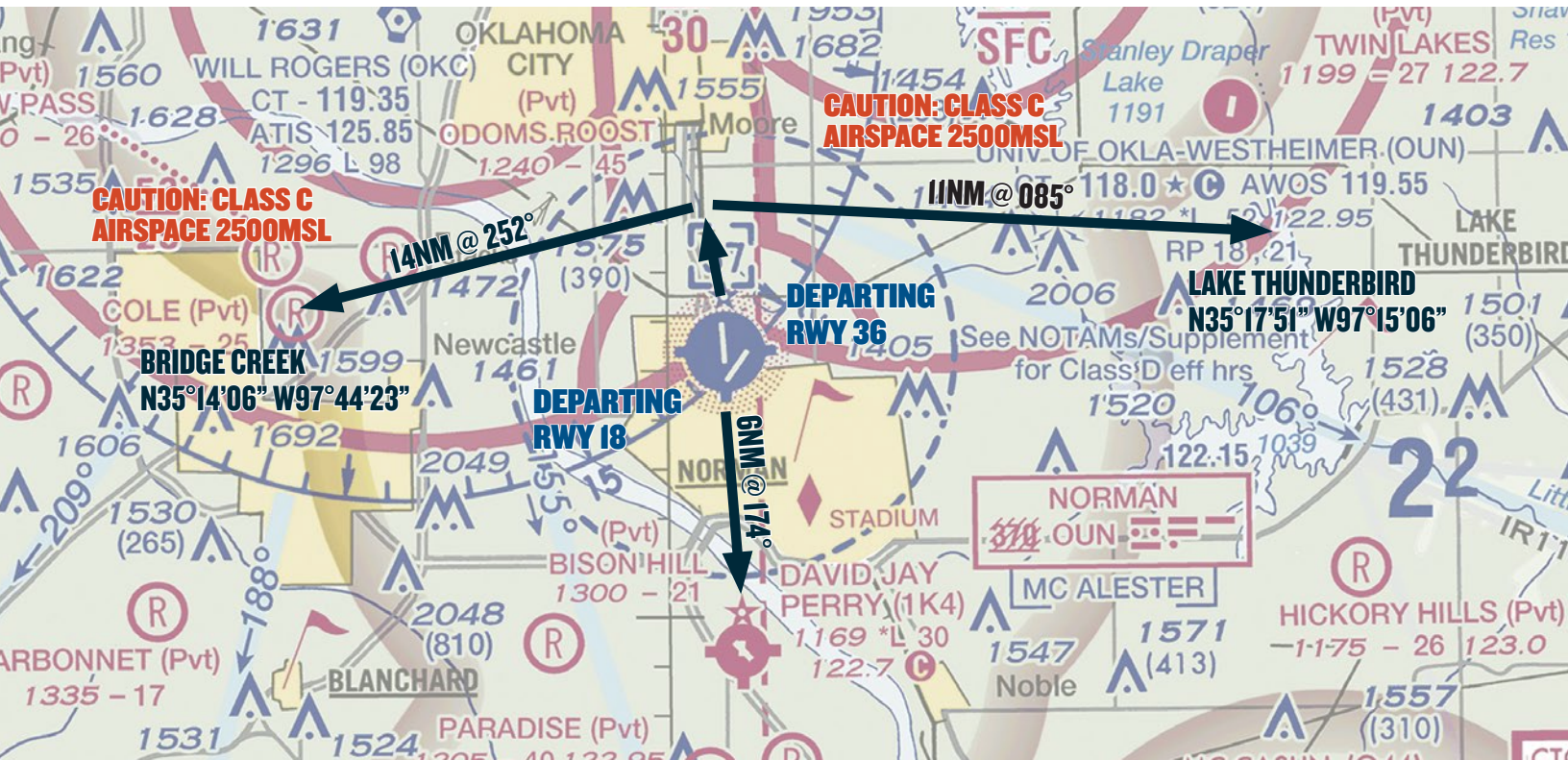
#### Departing runway 8

- Fly direct to David Jay Perry (1K4) and then turn on course.



# DEPARTURE PROCEDURES

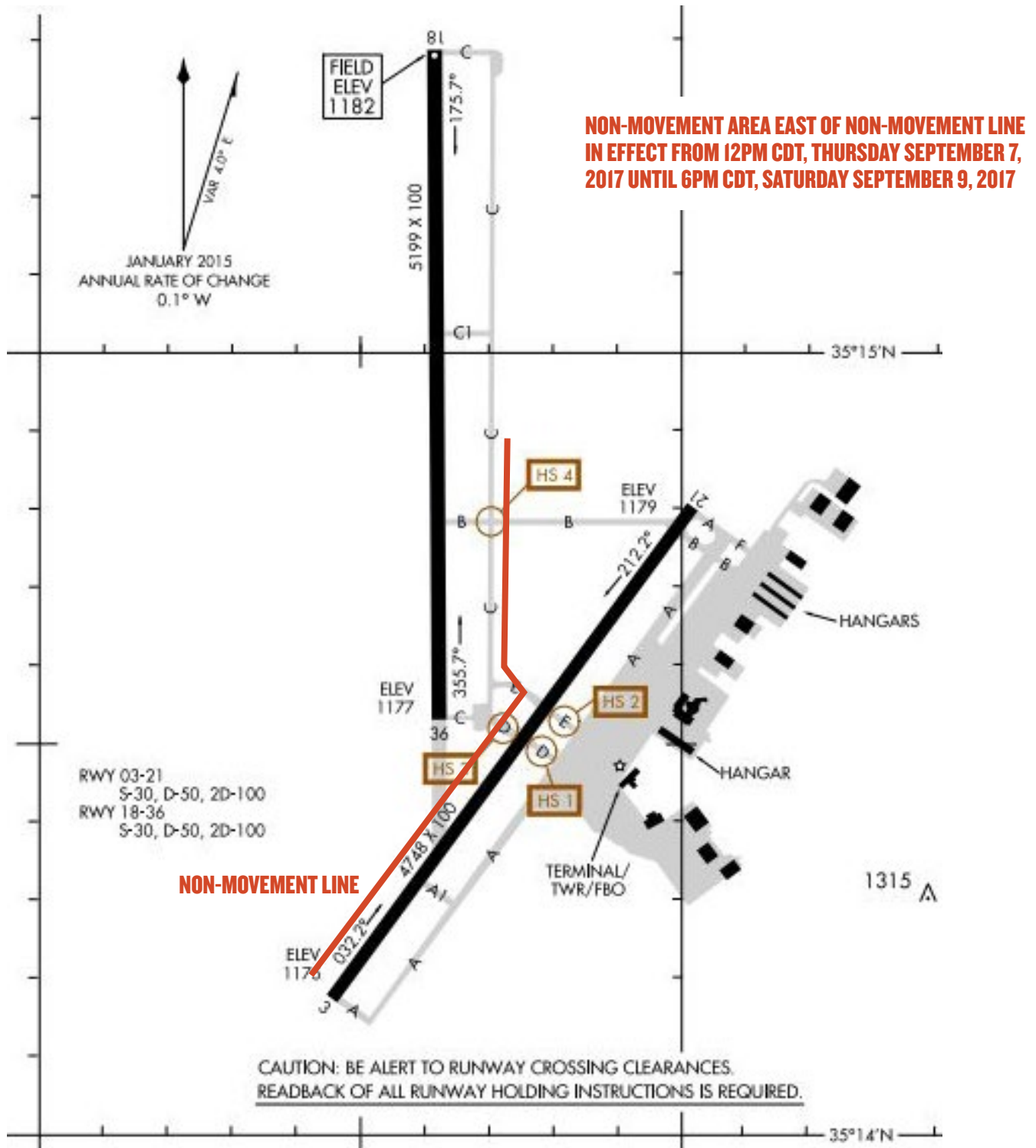
## WESTHEIMER AIRPORT (OUN)





# AIRPORT DIAGRAM

## WESTHEIMER AIRPORT (OUN)



AWOS: 119.55

OKLA CITY APPROACH: 124.2

WESTHEIMER TOWER: 118.0

WESTHEIMER GROUND: 121.6