



PILOT INFORMATION PACKET

Aircraft Owners and Pilots Association (AOPA) Fly-In
Colorado Springs Airport (COS)—Colorado Springs, CO

SPECIAL FLIGHT PROCEDURES

EFFECTIVE 12:00 Noon Local Friday, September 25, 2015
Until 6:00 PM Local Saturday, September 26, 2015

TEMPORARY VFR PROCEDURES

Specific procedures contained within this NOTAM may be revised or unavailable at the time of the event. Users are encouraged to check NOTAMs frequently to verify they possess the most current revisions. This NOTAM does not supersede restrictions pertaining to the use of airspace contained in FDC NOTAMS.

In anticipation of a larger than normal number of aircraft operating to and from Colorado Springs Airport in conjunction with the AOPA Fly-In, the following procedures will be used to enhance safety and minimize delays.



TABLE OF CONTENTS

NOTAM—Temporary VFR Procedures	1-21
VFR Arrivals Overview	01
Runway Approach Overview.....	02
VFR Procedures: Arrivals over Monument, CO	03-05
VFR Holding Patter: USAFA Hold.....	04
VFR Landing Patterns: Landing from Monument @ COS	05
VFR Procedures: Arrivals over Ellicott, CO	06-08
VFR Holding Pattern: Ellicott Hold.....	07
VFR Landing Patterns: Landing from Ellicott @ COS	08
IFR Arrivals.....	09
Important Information	09
Local Training and Practice.....	09
Cautions	09
Additional Airspace Operations and Military.....	10
Sites Suspending Operations to Accommodate COS Fly-In	10
Frequencies and Waypoint Information	11
Specific Latitude/Longitude Coordinates	11
Frequency Overview Graphic	12
General Information	13
Parking Areas.....	13
Vehicular Traffic	13
Preflight Planning.....	13
Landing Procedures	14-17
Landing 35L	15
Landing 17R.....	16
Landing 3L.....	17
Taxi Procedures.....	18
IFR Departures.....	19
VFR Departures	19-21
VFR Flight Following	19
Prior to Start-up	19
Run up	19
Taxi.....	19
Departure.....	19
Departure Procedures: Graphic.....	20
Departure Taxi Procedures: Graphic	21

TABLE OF CONTENTS CONTINUED

Additional Information22-23
Host FBO Information 22
General Aviation Maintenance 23
Parking and Service Details 23
Chocks and Tie Downs 23
After-Hours departures 23
Camping..... 23
DTC Flight Planning..... 23
Rental Car Availability..... 24

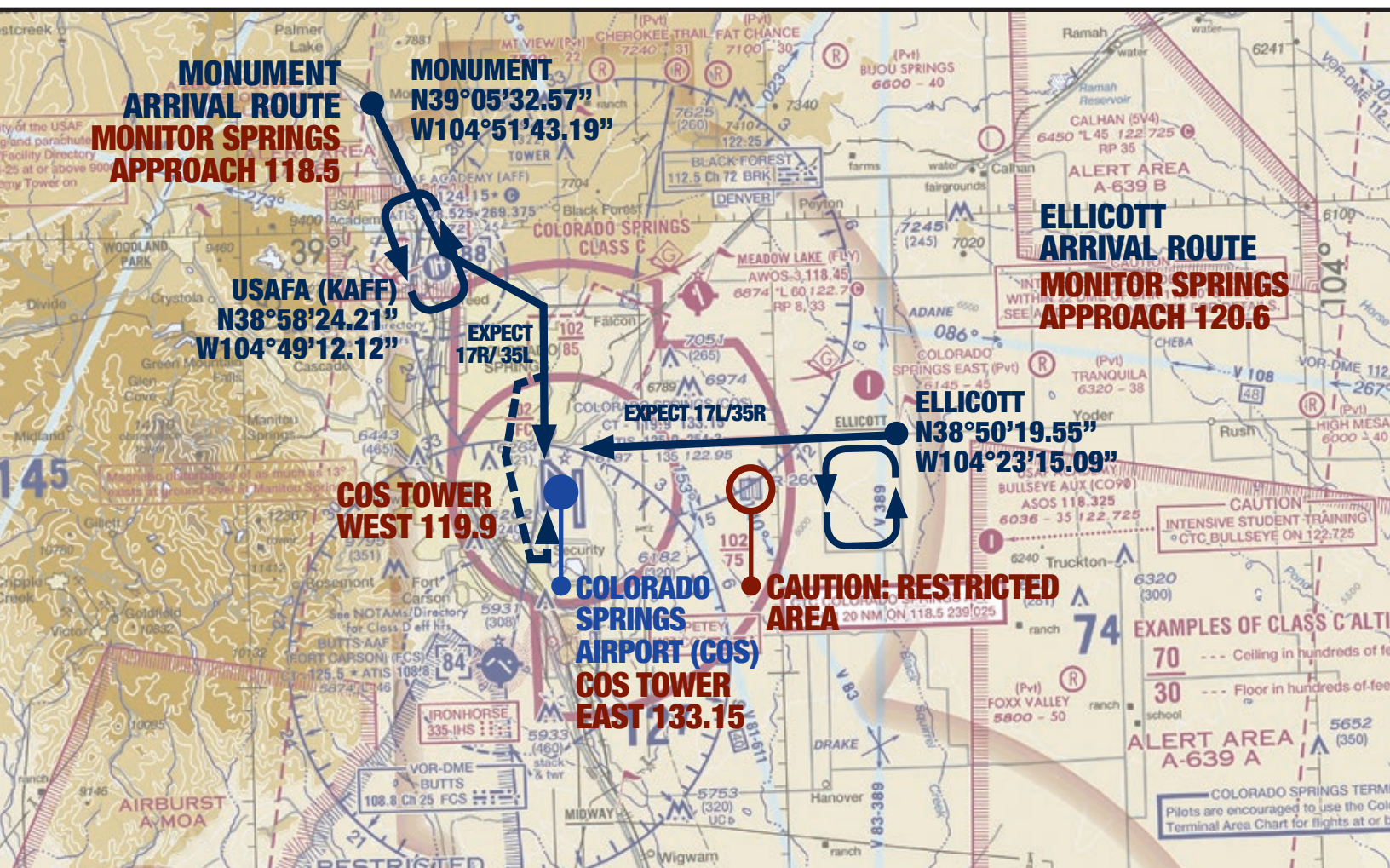
Other Area Airports24
Meadow Lake Airport (FLY) 24
Fremont County Airport (1V6) 24
Pueblo Memorial Airport (PUB) 24

Additional Graphics..... 25-29
Aircraft Parking at COS..... 25
Approaching Turf Circles East of Ellicott, CO..... 25
Approaching Intersection of Northgate Blvd. and I-25—USAFA Hold 26
Approaching USAFA Hold Entry and Exit at Interquest Pkwy and I-25 26
Monument Arrival Route: Blue Roof Church Along Interquest Pkwy 27
Monument Arrival Route: Softball Fields—Left Base Turn for 35L..... 27
USAFA Airport (AFF)..... 28
Meadow Lake Airport (FLY)—Satellite View with Frequencies 28
Fremont County Airport (1V6)—Satellite View with Frequencies 29
Pueblo Memorial Airport (PUB)—Satellite View with Frequencies 29

AOPA Fly-In Windshield Graphic—Printable30

Kneeboard Quick Reference Graphics..... 31-32
VFR Arrivals: Ellicott Arrival & Hold 31
VFR Arrivals: Monument Arrival & Hold 32

VFR ARRIVALS OVERVIEW



ATIS: 125.0 SPRINGS APPROACH: 118.5/120.6 COS TOWER: WEST 119.9/EAST 133.15

Two (2) VFR arrival routes have been established to accommodate aircraft flying to the event. All VFR arrivals must begin over Monument, CO (19NM Northwest of Colorado Springs Airport (COS)) or over Ellicott, CO (15NM East/Northeast of Colorado Springs Airport (COS)). The following procedures will be used to enhance safety and minimize air traffic delays during the AOPA Fly-In at Colorado Springs Airport (COS).

All Fly-In aircraft transitioning Denver airspace north of Colorado Springs should remain outside of the Denver Class Bravo Airspace. Use caution

west of Centennial Airport (APA) for arrivals to COS.

Fly-in aircraft transitioning Denver are encouraged to contact Denver Departure on 132.75 over Castle Rock-Southbound (N39°18'00.00\"/>

Fly-in aircraft transitioning the Pueblo area, contact Denver Departure on 120.1

All aircraft should follow the same routes and plan for sequencing to runways accordingly.

Instructions to “MONITOR” mean that pilots should TUNE & LISTEN but NOT TALK unless called or given a clearance.

No Practice Approaches or practice instrument procedures will be available at surrounding airports during the AOPA Fly-In at Colorado Springs Airport (COS).

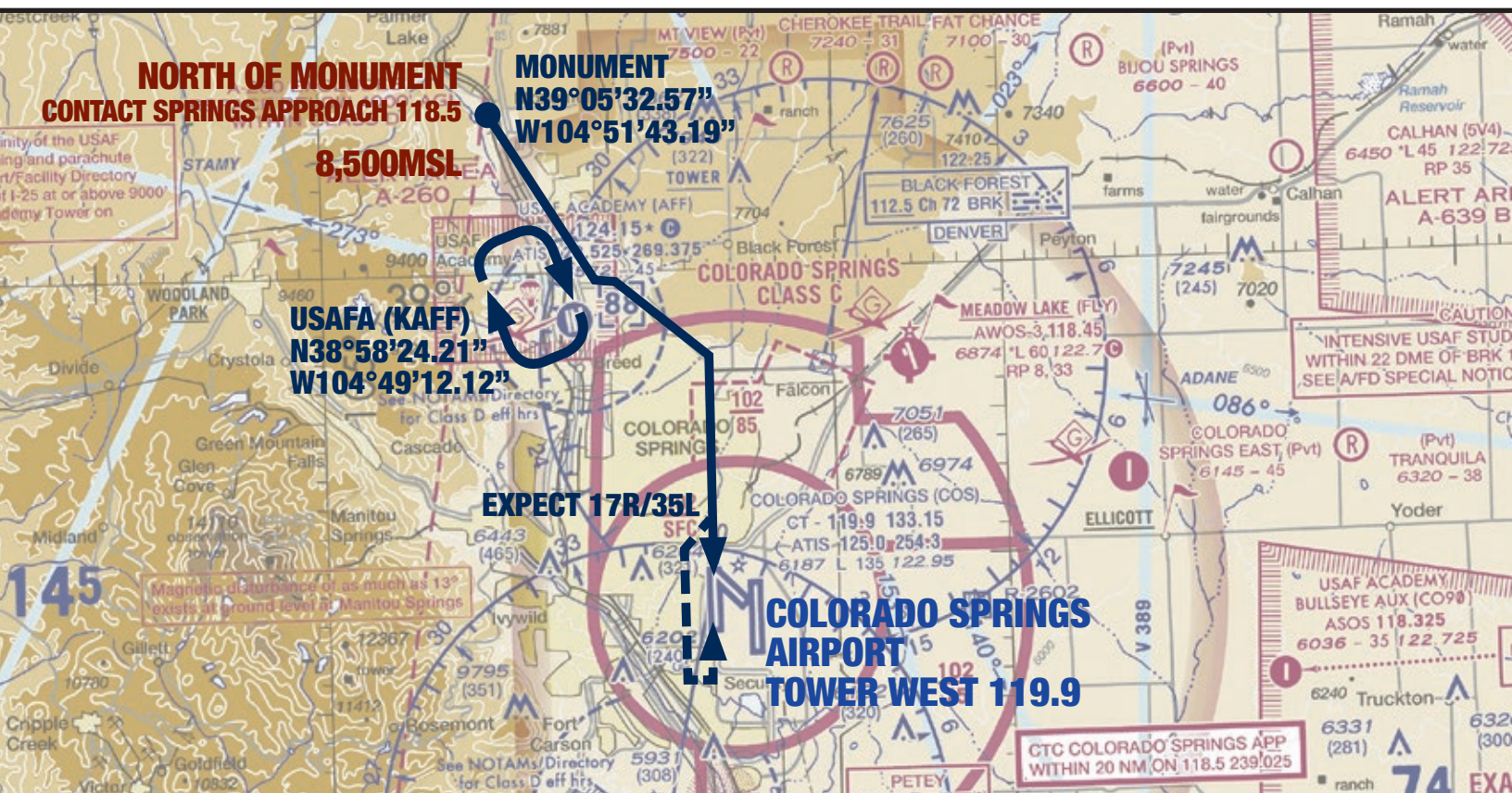
CAUTION: Watch for converging traffic when joining any published arrival route.

RUNWAY APPROACH OVERVIEW



ATIS: 125.0 SPRINGS APPROACH: 118.5/120.6 COS TOWER: WEST 119.9/EAST 133.15

VFR PROCEDURES: ARRIVALS OVER MONUMENT



ATIS: 125.0 SPRINGS APPROACH: 118.5 COS TOWER WEST: 119.9

Obtain ATIS on 125.0 prior to reaching Monument, CO.

This arrival route begins over Monument, CO at 8,500 feet MSL. Follow I-25 from Castle Rock, CO south toward Monument, CO and remain clear of Denver International Airport (DEN) Class B airspace.

When arriving over Monument, CO contact Springs Approach on 118.5 and report *N number, type aircraft, ATIS code*, over Monument. Do not expect an immediate reply from Springs Approach.

Continue inbound. Springs Approach will advise what runway to expect and whether holding will be required. If holding is necessary enter the holding pattern west of I-25 over the U. S. Air Force Academy campus. Right turns. See the *USAFA holding graphic*.

When advised by Springs Approach to depart the hold and continue inbound to

COS, complete the remainder of the hold and exit at Interquest Parkway.

Inbound aircraft not in the hold at USAFA, stay east of I-25 until joining Interquest Parkway. Monitor Springs Tower on 119.9. Tower will contact you with landing clearance and/or other instructions.

Descend to traffic pattern altitude at pilot's discretion; 7,200 feet MSL.

If instructed to land on RWY 17R, follow Powers Blvd. toward COS and expect a straight in landing for RWY 17R.

If instructed to land on RWY 35L, follow Powers Blvd. toward COS for a left downwind entry to RWY 35L. Expect to turn base at the softball fields prior to Milton East Proby Parkway.

If instructed to land on RWY 31, follow Powers Blvd. toward COS and fly a left downwind to RWY 35L. Expect to turn an extended left base at the softball fields prior

to Milton East Proby Parkway for RWY 31.

Be prepared to extend downwind or land on RWY 13. Follow instructions from Tower.

After landing, exit the runway as quickly and as safely as possible. Keep moving after exiting the runway so as not to block subsequent arrivals. Follow taxi instructions to the designated parking areas.

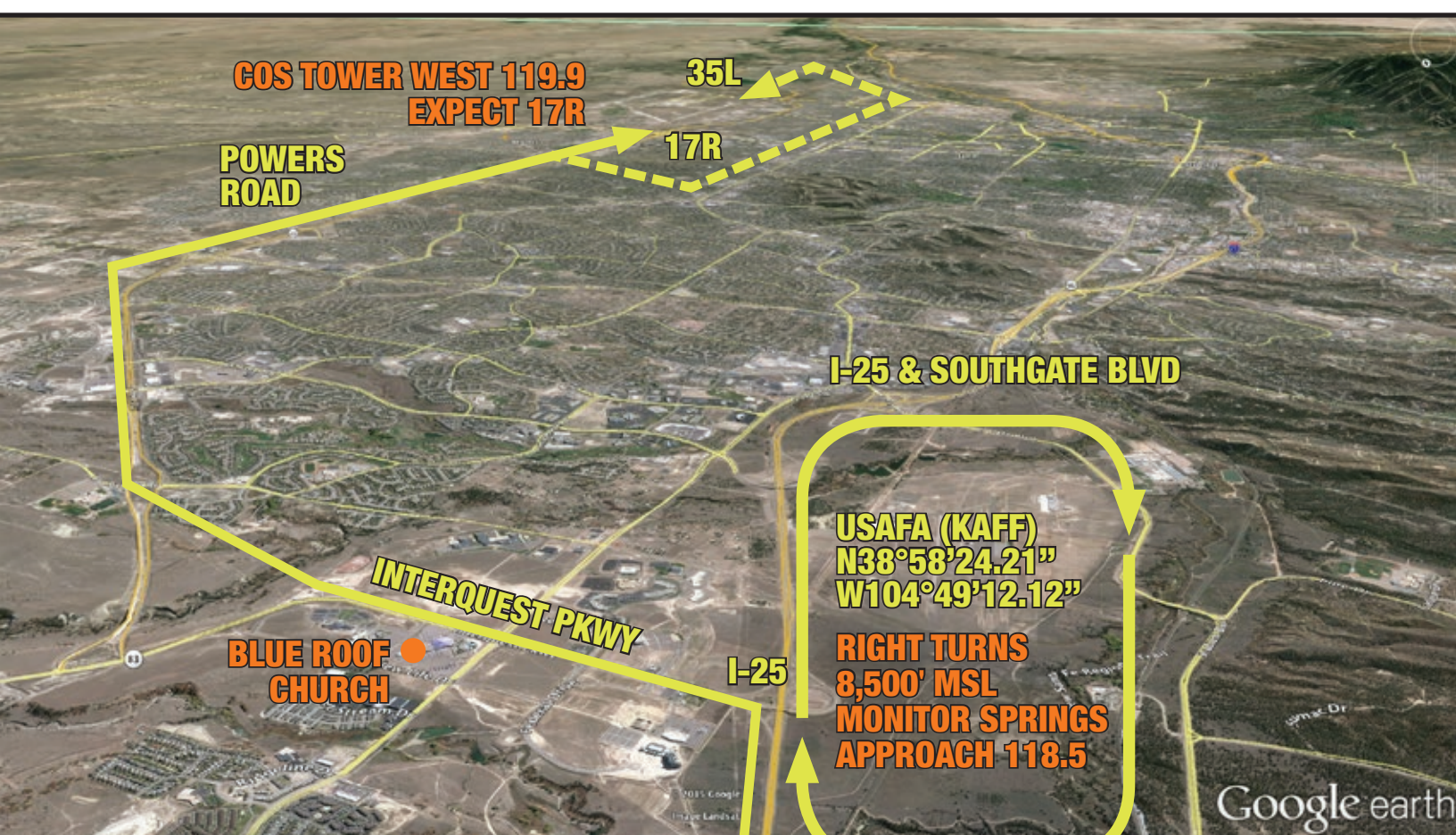
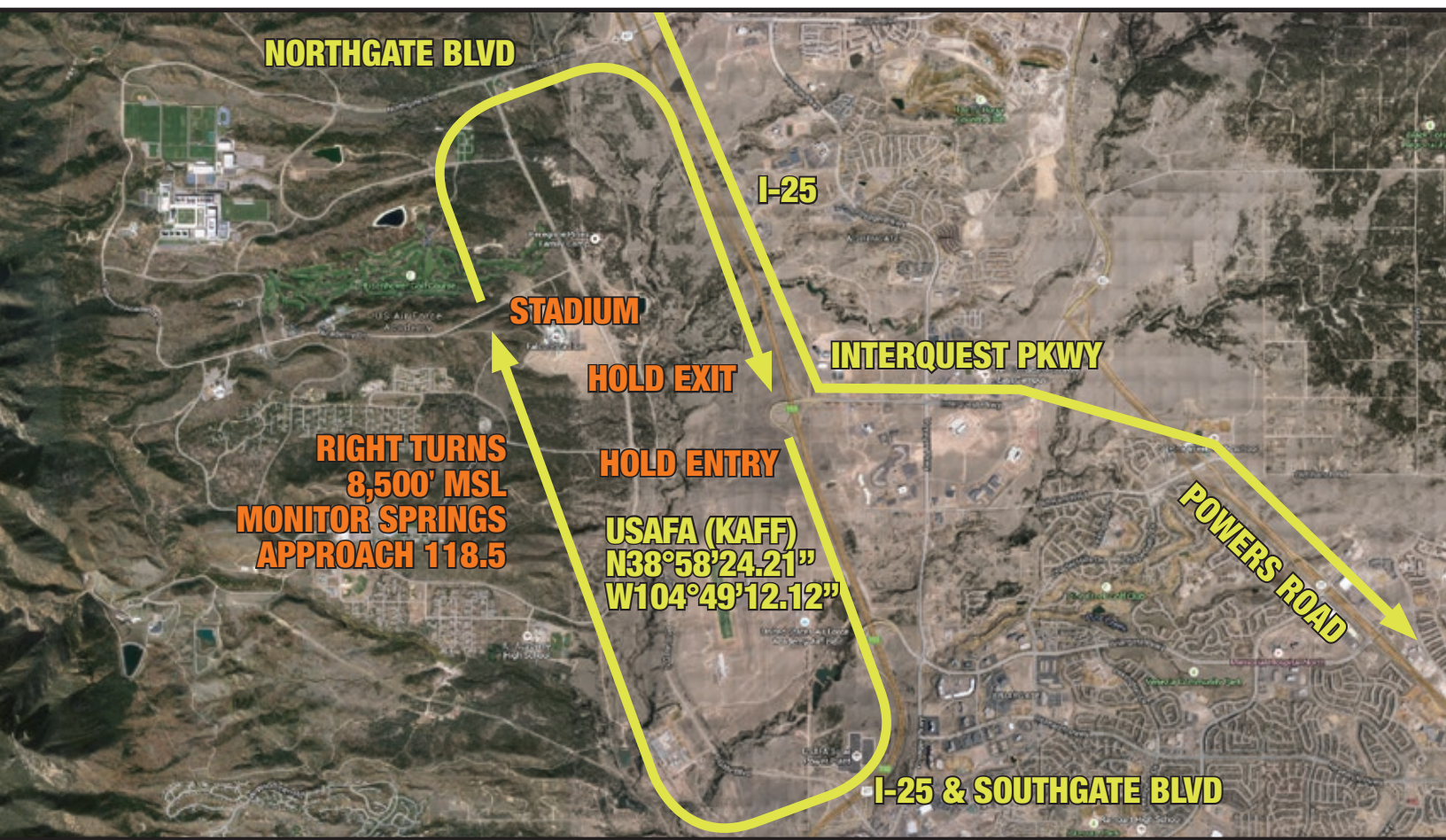
If landing RWY 35L or 17R, expect to exit at A5, A4, or A2 to parking.

If landing RWY 35R, expect to exit at E4 and taxi via G, C, C7, A7, A4 to parking or taxi via B, B1, A1, A, A2 to parking.

If landing RWY 31, expect to exit at B4 and taxi via B, B1, A1, A, A2 to parking.

Marshallsers will direct and assist aircraft to parking spaces.

VFR HOLDING PATTERN: USAFA HOLD

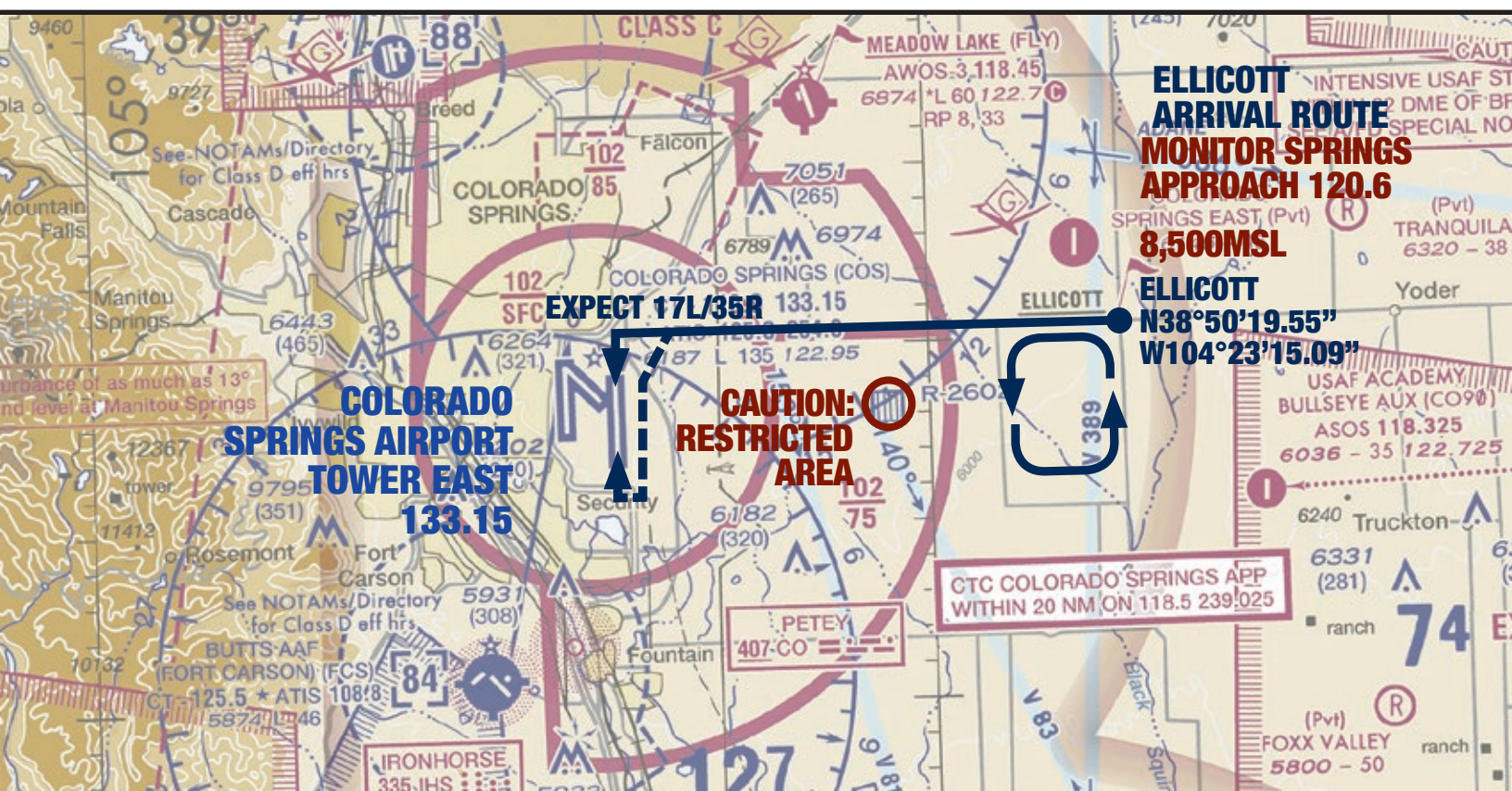


VFR LANDING PATTERNS: LANDING FROM MONUMENT @ COS



ATIS: 125.0 SPRINGS APPROACH: 118.5 COS TOWER WEST: 119.9

VFR PROCEDURES: ARRIVALS OVER ELLICOTT



ATIS: 125.0 SPRINGS APPROACH: 120.6 COS TOWER EAST: 133.15

Obtain ATIS on 125.0 prior to reaching turf circles just east of Ellicott, CO.

This arrival route begins at the turf circles just east of Ellicott, CO at 8,500 feet MSL. Follow highway 94 inbound and contact Springs Approach on 120.6 prior to arriving over the turf circles and report N number, type aircraft, ATIS code, and over turf circles.

Springs Approach will advise to continue inbound, what runway to expect, and whether holding will be required. If holding is necessary enter the holding pattern around Ellicott, CO south of highway 94, left turns. See the *Ellicott holding graphic*.

When advised by Springs Approach to depart the hold and continue inbound to COS, complete the remainder of the

hold and depart the hold at Ellicott.

Inbound aircraft not in the hold at Ellicott, or aircraft departing the hold should stay north of highway 94.

After passing Ellicott, monitor Springs Tower on 133.15. Tower will contact you with landing clearance and/or other instructions.

Descend to traffic pattern altitude at pilot's discretion; 7,200 feet MSL.

If instructed to land on RWY 17L, follow highway 94 to COS and expect to enter a left base for RWY 17L.

If instructed to land on RWY 35R, follow highway 94 to COS and expect to enter a right downwind for RWY 35R.

Be prepared land on RWY 13 as well.

Follow instructions from Tower.

After landing, exit the runway as quickly and as safely as possible. Keep moving after exiting the runway so as not to block subsequent arrivals. Follow taxi instructions to the designated parking areas.

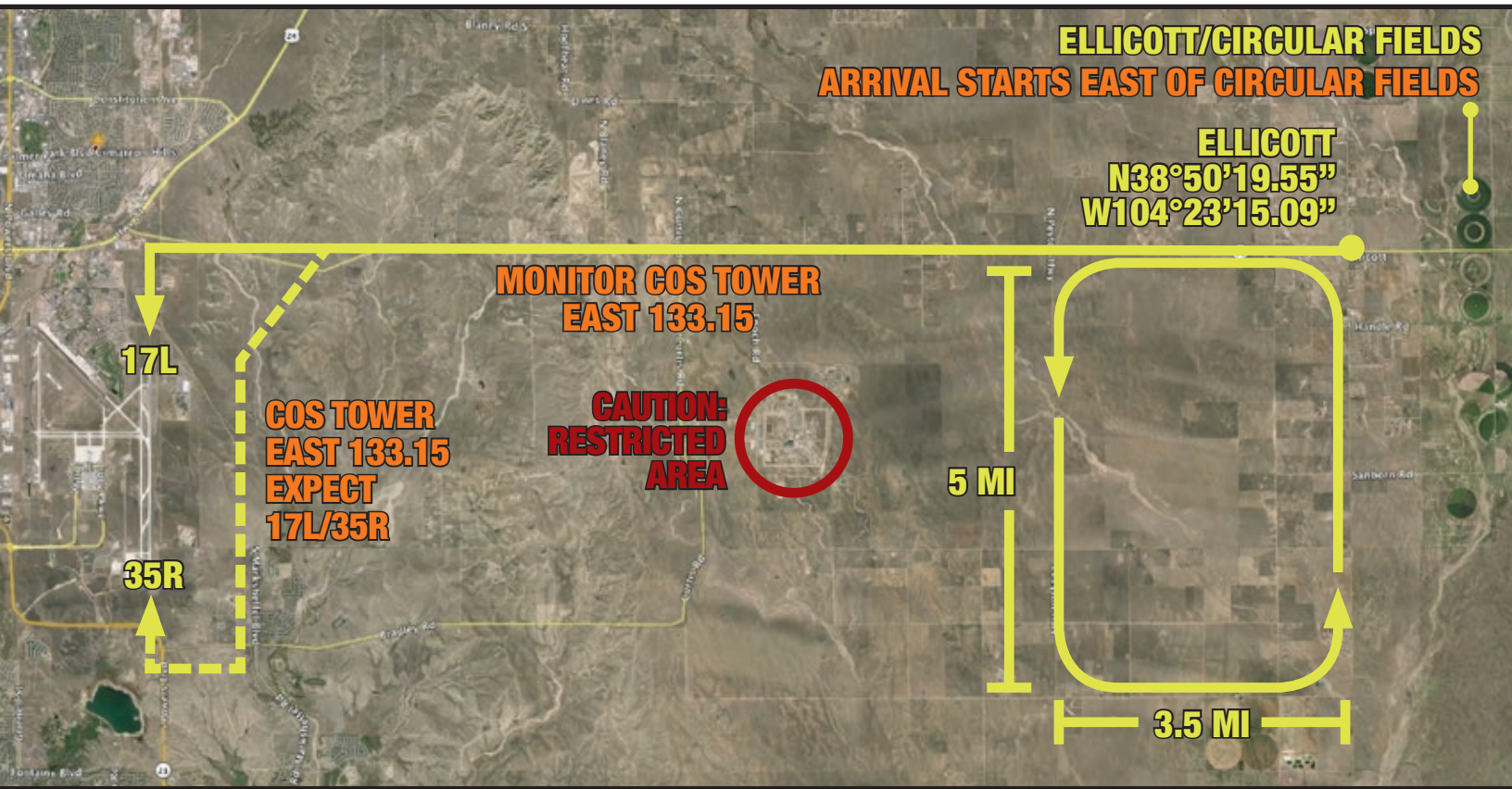
If landing RWY 17L, expect to exit at E4 and taxi via G, C, C7, A7, A4 to parking or taxi via B, B1, A1, A, A2 to parking.

If landing RWY 35R, expect to exit at E4 and taxi via G, C, C7, A7A, A4 to parking or taxi via B, B1, A1, A, A2 to parking.

If landing RWY 13, expect to exit at B5 and taxi via B, B1, A1, A, A2 to parking.

Marshalls will direct and assist aircraft to parking spaces.

VFR PROCEDURES: ARRIVALS OVER ELLICOTT



VFR HOLDING PATTERN: ELLICOTT HOLD



VFR LANDING PATTERNS: LANDING FROM ELLICOTT @ COS



ATIS: 125.0 SPRINGS APPROACH: 120.6 COS TOWER EAST: 133.15

IFR ARRIVALS

IFR Delays

IFR delays may be incurred when arrival rates exceed airport capacity. Pilots should be prepared for the potential holding of IFR arrivals to Colorado Springs Airport. Please plan accordingly.

IMPORTANT INFORMATION

Pilots are urged to review all applicable NOTAMs and arrival/departure procedures prior to conducting flight to Colorado Springs Airport. IFR flight plans should be filed at least 6 hours prior to proposed departure time. Pilots are encouraged to get flight following or traffic advisories as far out as possible. See Frequency map.

LOCAL TRAINING AND PRACTICE APPROACHES

Local traffic pattern, closed traffic training, and practice instrument approaches will not be available at Colorado Springs Airport during the AOPA Fly-In. Practice approaches at USAF Academy Airport (AFF) and Pueblo Memorial (PUB), Centennial Airport (APA), and Butts AAF (FCS) will not be available during the event.

CAUTIONS

Denver International Airport Class B Airspace; 20NM North of Colorado Springs Airport (COS)

Colorado Springs Airport Class C Airspace

Pueblo Memorial Airport Class D Airspace; 32NM Southeast of Colorado Springs Airport (COS)

Centennial Airport Class D Airspace; 46NM Northwest of Colorado Springs Airport (COS)

USAF Academy Airport Class D Airspace; 11NM Northwest of Colorado Springs Airport (COS)

Rapidly rising terrain North, West, and South of airport

Restricted area R-2602; 8 NM East of Colorado Springs Airport (COS)

Restricted area R-2601 A & B; 7 NM Southwest of Colorado Springs Airport (COS)

Alert Area A-639B and A-639A Northeast, East, and Southeast of Colorado Springs Airport (COS)

Density Altitude

ADDITIONAL AIRSPACE OPERATIONS AND MILITARY

Intensive flight training, military, and parachute activity throughout the Greater Colorado Springs / Denver Area. See Denver/Colorado Springs Terminal Area Chart for specific areas.

Use caution for extensive flight training, glider, and parachute jump operations in the vicinity of area airports.

Kelly Airpark Airport (Private) has numerous gliders and ultra-lights in the vicinity of the airport. Aircraft transitioning aircraft to Colorado Springs Airport (COS) are encouraged to remain just along of Interstate 25 to avoid the Kelly Airpark glider area. **Military Training:** USAF Academy (KAFF), Butts AAF (KFCS), and Pueblo Memorial (KPUB) are home to various military training aircraft so use extreme caution when transitioning from any direction to the VFR Arrival route.

NOTE: Be advised that air operations stake-holders from the following airports and military operations have agreed to suspend activities, as noted below, during the effective time of this NOTAM. Continue to use caution in these areas, as pilots and flight crews must adhere to regulations to see and avoid in all cases.

SITES SUSPENDING OPERATIONS TO ACCOMMODATE COS FLY-IN

Civilian Operations

Area Airports	from COS	Suspending all non-emergency ops
CO49: Colorado Springs East	14NM East	
CO50: USAFA Bullseye Aux	19NM East	NO training aircraft/glider
CO15: Kelly Air Park	24NM North	NO parachute jump

Military Flight Operations

Alert Areas

A-260 (USAF Academy)

A-639A/B

Suspending all non-emergency ops

MOAs

AIRBURST (SSW KCOS)

NO SUA Activity (Alert & M.O. Areas)

Airports

KAFF Academy: USAFA

NO training aircraft/glider/UAS

KFCS Butts AAF: US Army

NO parachute jump

KCOS Peterson AFB: USAF

KPUB Doss Aviation: USAF

FREQUENCIES & WAYPOINT INFORMATION

Colorado Springs Airport Frequencies

Initial Position Call: Springs Approach	See VFR Arrival Details
---	-------------------------

Springs Approach: Monument	118.5
----------------------------	-------

Springs Approach: Ellicott	120.6
----------------------------	-------

Atis	125.0 (719.637.9696)
------	----------------------

Tower East—Runway 17L/35R	133.15
---------------------------	--------

Tower West—Runway 17R/35L	119.9
---------------------------	-------

Ground	121.7
--------	-------

Unicom	122.95
--------	--------

Departure	124.0
-----------	-------

FSS	122.25
-----	--------

*See frequency graphic for correct facility to contact depending on position

Specific Latitude/Longitude Coordinates

Monument, CO	N39°05'35.87" W104°52'19.08"
--------------	------------------------------

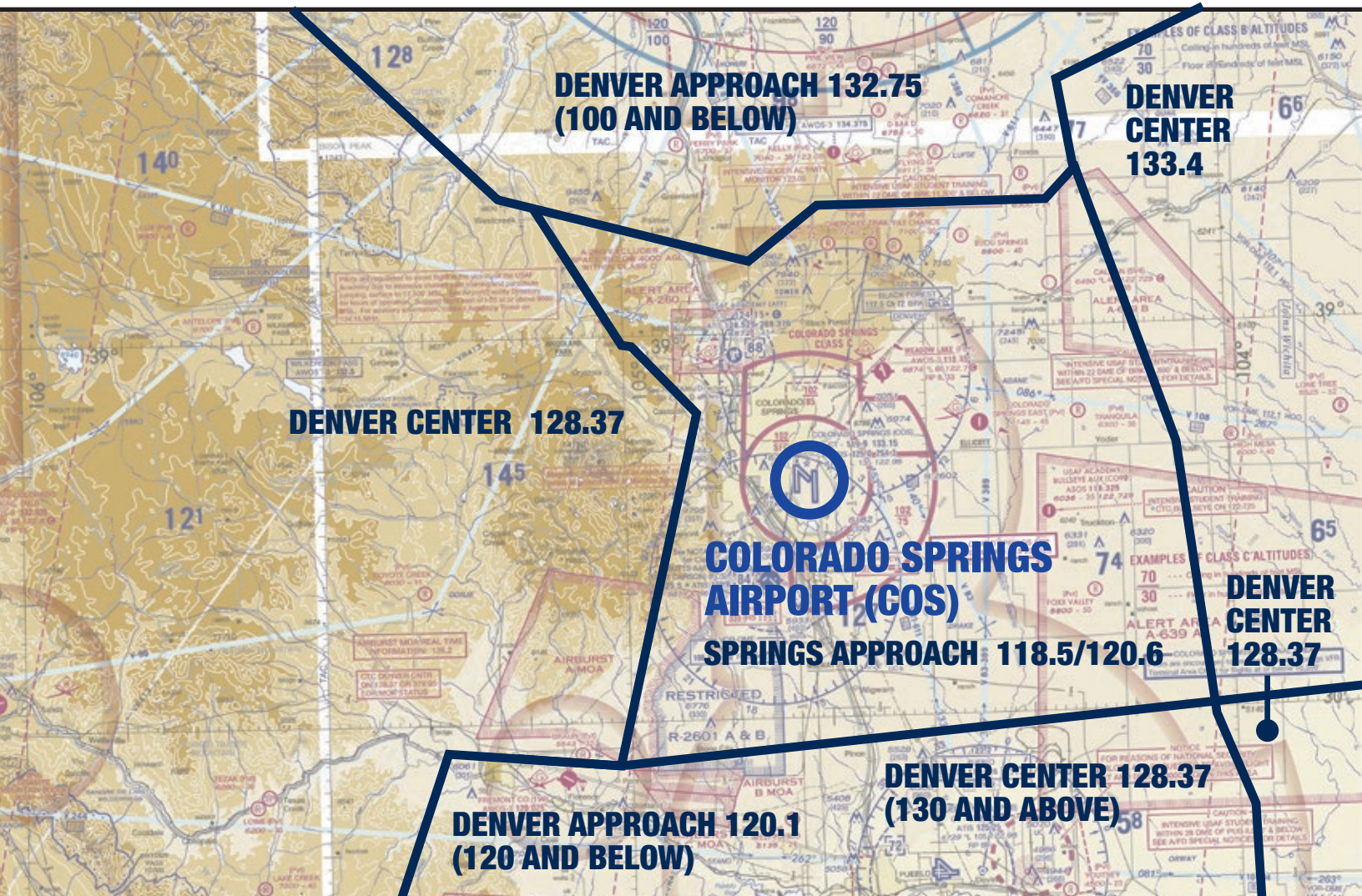
USAFA (AFF)	N38°58'22.54" W104°49'13.33"
-------------	------------------------------

Crop circles	N38°50'20.24" W104°21'19.29"
--------------	------------------------------

Ellicott, CO	N38°50'17.70" W104°23'14.33"
--------------	------------------------------

Colorado Springs Airport (COS)	N38°48'40.01" W104°42'12.47"
--------------------------------	------------------------------

FREQUENCY OVERVIEW



ATIS: 125.0 COS TOWER: WEST 119.9/EAST 133.15 COS GROUND: 121.7

GENERAL INFORMATION COLORADO SPRINGS AIRPORT



ATIS: 125.0 COS TOWER: WEST 119.9/EAST 133.15 COS GROUND: 121.7

Parking Areas:

When operating in the parking areas, pilots are encouraged to be extra alert for taxiing aircraft, aircraft with engine(s) running, and vehicle/pedestrian traffic. Ground support personnel will be assisting aircraft to and from parking areas and run-up areas. For safety reasons, high RPM engine running is prohibited outside

of designated run-up areas. Please review the parking map prior to landing and departure. This will brief you on the correct taxi routes.

Vehicular Traffic:

Vehicles are not allowed on ramps except those belonging to airport operators and tenants, and exhibitors participating in the AOPA Colorado Springs Airport Fly-In.

Pre-flight Planning:

Please ensure that you have reviewed the special flight information, departure procedures, and temporary taxi procedures prior to engine start. High traffic density is expected Saturday morning and afternoon. Consider arriving during off-peak hours.

LANDING PROCEDURES

Colorado Springs tower will be utilizing a reduced separation concept to increase the arrival rate to four aircraft per minute. Landing clearance will include a designated touchdown and exit point. Study the touchdown points below, and on the attached graphic.

Runway 17R - KCOS

- Touchdown A1, exit A2 / (C3)
- Touchdown A3, exit A5 / (end)
- South of A5 will be closed portion of rwy for crossing a/c

Runway 17L - KCOS

- Touchdown E2, exit E4

Runway 35L - KCOS

- Touchdown at numbers, exit at A5 / (A4)
- Touchdown at A3, exit at A2 / (C3)
- North of A2 will be closed portion of rwy for crossing a/c

Runway 31 - KCOS

- Touchdown B5, exit B4 / (end)

Runway 35R - KCOS

- Touchdown E5, exit E4

LANDING PROCEDURES: 35L



LANDING PROCEDURES: 17R



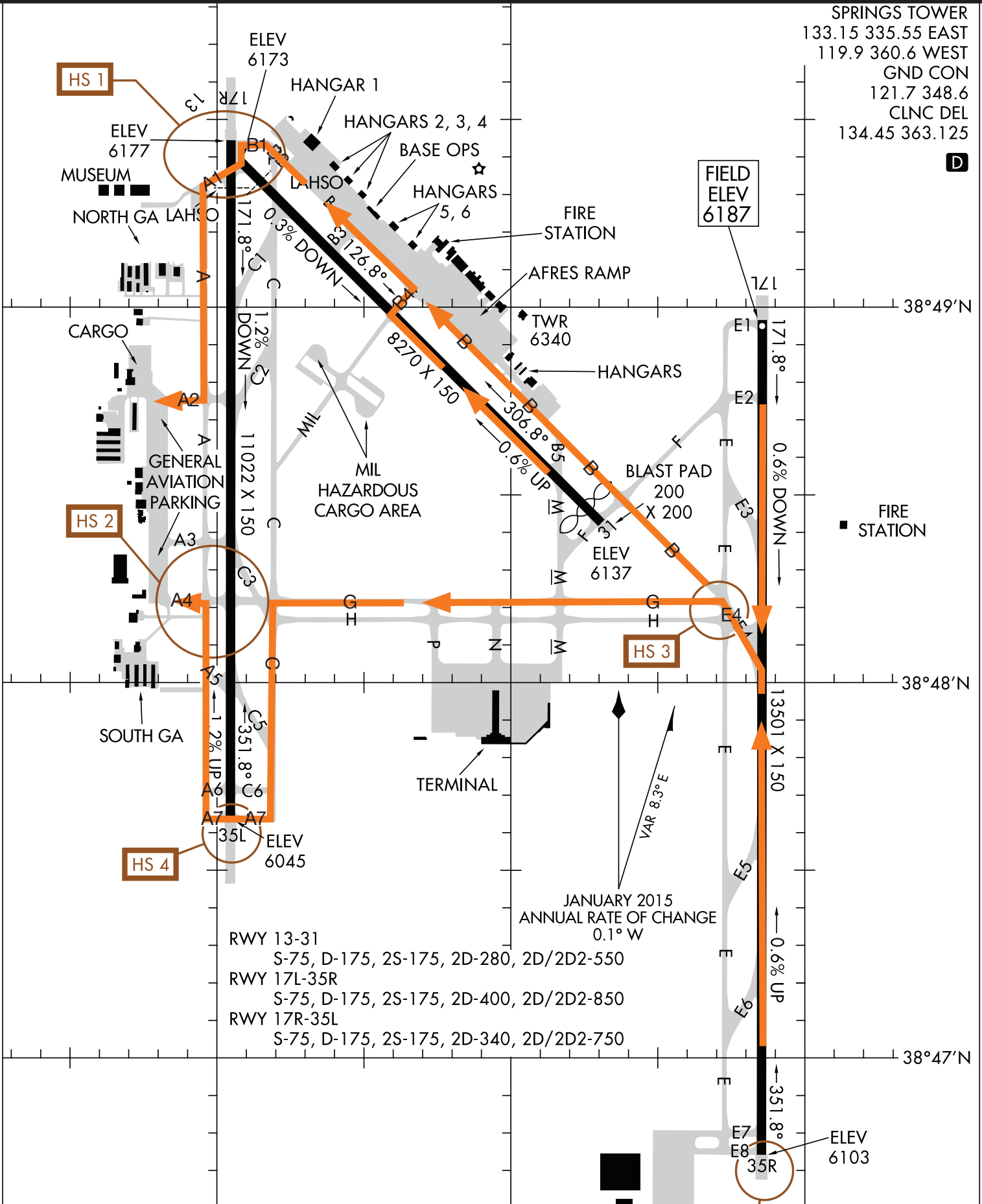
LANDING PROCEDURES: 31



TAXI PROCEDURES: COLORADO SPRINGS AIRPORT

SPRINGS TOWER
 133.15 335.55 EAST
 119.9 360.6 WEST
 GND CON
 121.7 348.6
 CLNC DEL
 134.45 363.125

D



RWY 13-31
 S-75, D-175, 2S-175, 2D-280, 2D/2D2-550
 RWY 17L-35R
 S-75, D-175, 2S-175, 2D-400, 2D/2D2-850
 RWY 17R-35L
 S-75, D-175, 2S-175, 2D-340, 2D/2D2-750

DEPARTURE PROCEDURES: COLORADO SPRINGS AIRPORT

IFR Departures

All IFR departures will follow normal procedures and obtain their clearance through clearance delivery. COS Clearance Delivery is on 134.45; If needed, an alternate Clearance Delivery frequency will be broadcast on COS ATIS 125.0.

VFR Departures

VFR Flight Following: Aircraft requesting advisories on departure must request flight following with COS Clearance Delivery on 134.45 **prior** to departure. Aircraft not requesting flight following prior to departure **will not** be provided the service.

Prior to Start-up: Please ensure that you have reviewed the special flight information, departure procedures, and temporary taxi procedures prior to engine start. Obtain ATIS on 125.0.

Run-up: After start-up, contact ground when you are ready to taxi and provide N number, direction of flight, destination, request for flight following if desired, and ATIS code. Follow taxi instructions and proceed to the nearest designated run-up area,

Taxi: When run-up is complete, follow taxi instructions from ground.

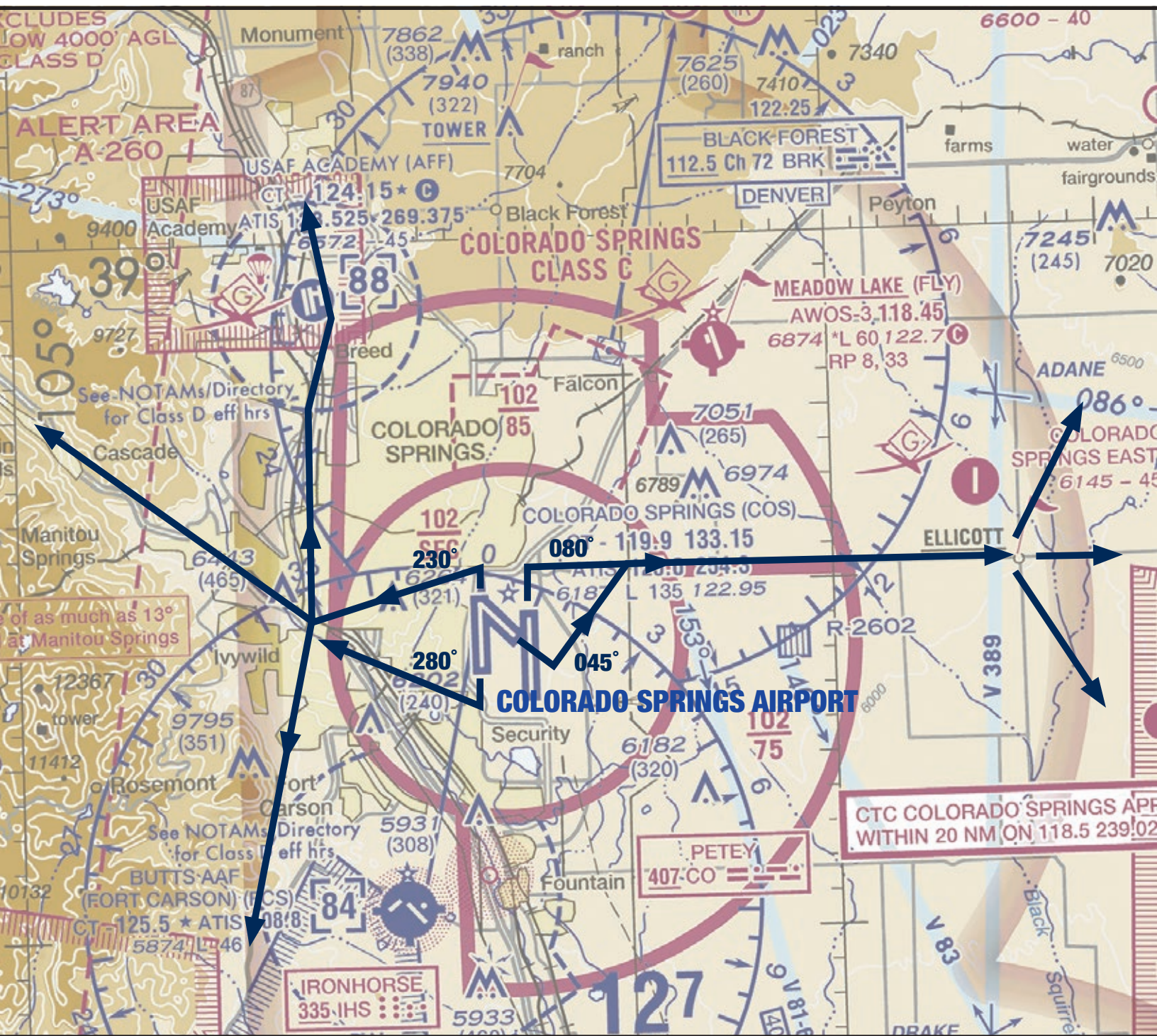
Monitor the tower frequency on 119.9 (or as assigned.) Contact tower when number one for departure.

Departure: Follow depicted departure routes in the *Departure Procedures graphic* unless otherwise instructed by ATC.

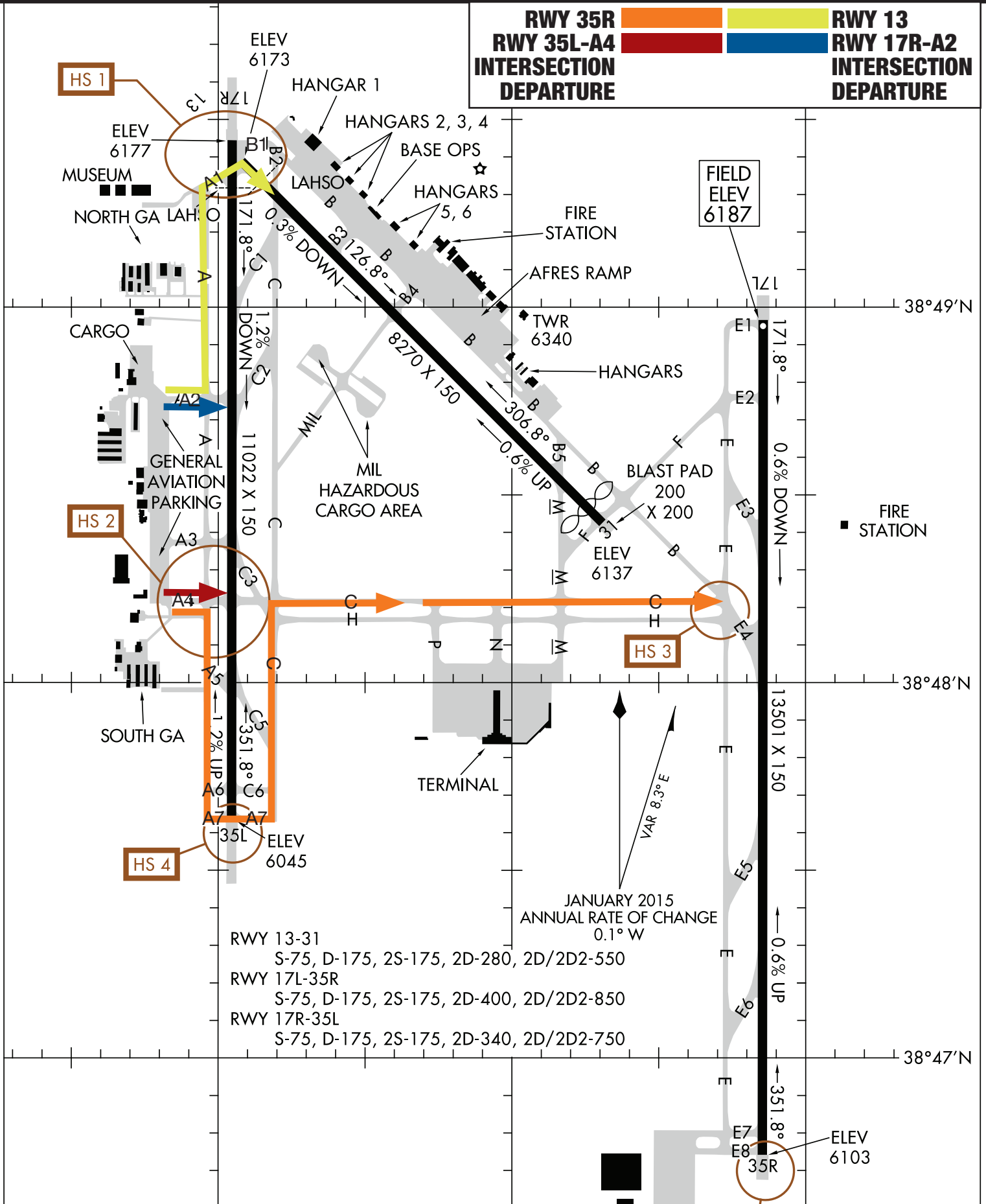
If departing runway 13, **do not start turn** to the North to highway 94 until after passing runway 17L/35R and remain at or below 8,500' MSL unless otherwise instructed by ATC.

If departing Westbound, **do not start turn** on course until reaching Interstate 25.

DEPARTURE PROCEDURES: COLORADO SPRINGS AIRPORT



DEPARTURE TAXI PROCEDURES: COLORADO SPRINGS AIRPORT



ADDITIONAL INFORMATION

AOPA Fly-In Host FBOs at Colorado Springs Airport (COS)

The AOPA Fly-In Host FBOs at Colorado Springs Airport (COS) are Cutter Aviation and jetCenters of Colorado. We thank them for their support, enthusiasm, and participation in the AOPA Fly-In at COS.



Jet Centers of Colorado

1575 Aviation Way
Colorado Springs, CO 80916-2714

Hours of operation:
Monday-Sunday 24/7

Main Office: 719.591.2288
Toll Free: 877.853.7523
Fax: 719.457.0401
Website: jetcenters.com/colorado-springs-cos-fbo-jetcenter/



Cutter Aviation

1360 Aviation Way
Colorado Springs, CO 80916-2714

Hours of operation:
Monday-Sunday 6:00 AM – 10:00 PM

Main Office: 719.591.2065
Fax: 719.574.3284
Website: cutteraviation.com/airport-facility-locations/cos-colorado-springs-co/
Email: InfoCOS@cutteraviation.com

General Aviation Maintenance



Trine Aerospace

5765 Taxi Way

Hangar 1

Colorado Springs, CO 80916-2714

Hours of operation:

24 hours during Fly-In

Main office: 719.623.5001

After hours support: 719.502.6294

Fax: 719.387.0068

Website: trineaerospace.com/aircraft-maintenance-and-modification/faa-145-repair-station/

Email: info@trineaero.com

Parking & Service Details

Fuel/oil orders will be taken at the time your aircraft is parked. If you need either, please make sure to make the request at that time. Orders made at a later time might delay your departure. Credit card information will be requested at the time the order is placed. Receipts if requested will be emailed or available in the FBOs. Order slips will be attached to propeller. If you are uncomfortable providing credit card information on the ramp, you can provide the information directly to the FBO's front desk.

Chocks & Tie Downs

Chocks will not be available so we highly recommend that you bring your own. Tie down hooks are scattered on the ramp and parking on tie down spaces is unlikely. It is recommended that you bring tie-downs and anchors for any additional aircraft securing needs.

After-hours Departures

If you will be departing after the airport's normal operating hours please contact the FBO that serviced your aircraft. An after-hours callout is subject to an additional fee.

Camping

Aircraft camping will be permitted at Colorado Springs Airport (COS) on Friday September 25, 2015. Space is limited and will be available on a first-come, first-served basis. There is no charge. **If you plan to camp, you must RSVP to [AOPA-COS Camping RSVP](#).** A confirmation will be sent with additional information. Camping aircraft will be requested to prominently place a C in the windshield.



DTC Flight Planning

Check weather and file your flight plan with DTC DUAT at www.duat.com; the official weather sponsor of AOPA's Regional Fly-Ins.

Rental Car Availability



Phone: 866.315.9155

Also available: Budget, Hertz, Avis

Other Area Airports

There are several public use airports that are within an hour drive of Colorado Springs Airport (COS). You might elect to use one of these airports in the event aircraft parking reaches capacity at COS. Rental cars are also available at many of these airports. Please contact the airport directly for more information.



[MEADOW LAKE AIRPORT \(FLY\)](#) is located 10 nautical miles northeast of Colorado Springs Airport (COS) and is approximately a 30 minute drive to COS. Meadow Lake Airport has two hard surface runways and one turf runway. Hard surface runway: 15/33 is 6000 X 60. Hard surface runway 08/26 is 2084 X 35. Turf runway: 15/33 is 5000 X 200. The airspace is Class

G. Rental cars are available through Enterprise at 866-315-9155.



[FREMONT COUNTY AIRPORT \(1V6\)](#) is located 30 nautical miles southwest of Colorado Springs Airport (COS) and is approximately a 45 minute drive to COS. Fremont County Airport has one hard surface

runway and one turf/grass runway. Hard surface runway: 11/29 is 5399 X 75. Turf/grass runway: 17/35 is 1800 X 35. The airspace is Class G. Rental cars are available through Enterprise at 410-857-1494.



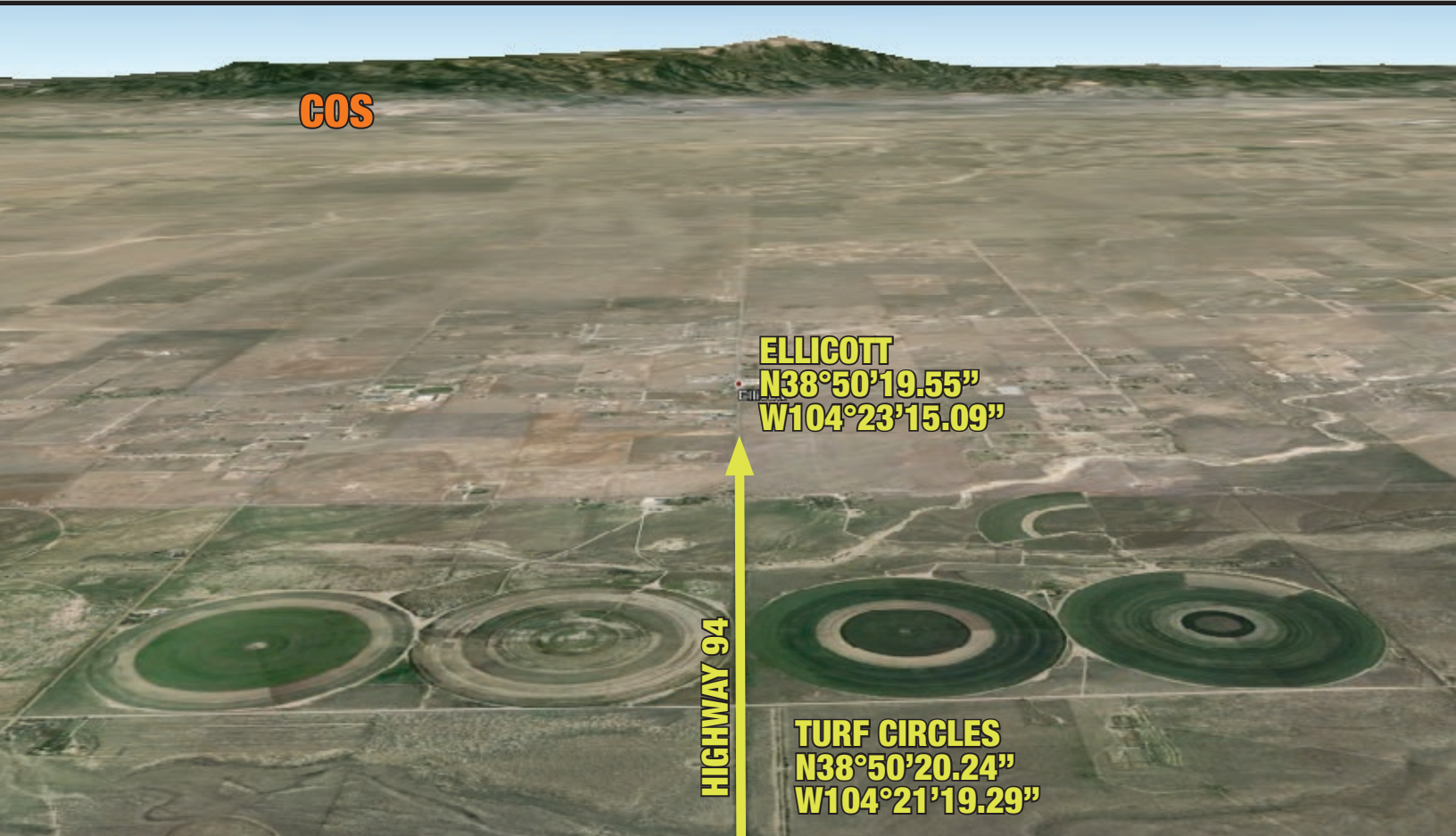
[PUEBLO MEMORIAL AIRPORT \(PUB\)](#) is located 32 nautical miles southeast of Colorado Springs Airport (COS) and is approximately a 45 minute drive to COS. Pueblo Memorial Airport has three hard surface

runways. 08L/26R is 4690 X 75. 08R/26L is 10496 X 150. 17/35 is 8310 X 150. The airspace is Class D. Rental cars are available through Enterprise rental car at 866-315-9155. Avis and Hertz are also available.

AIRCRAFT PARKING AT COS



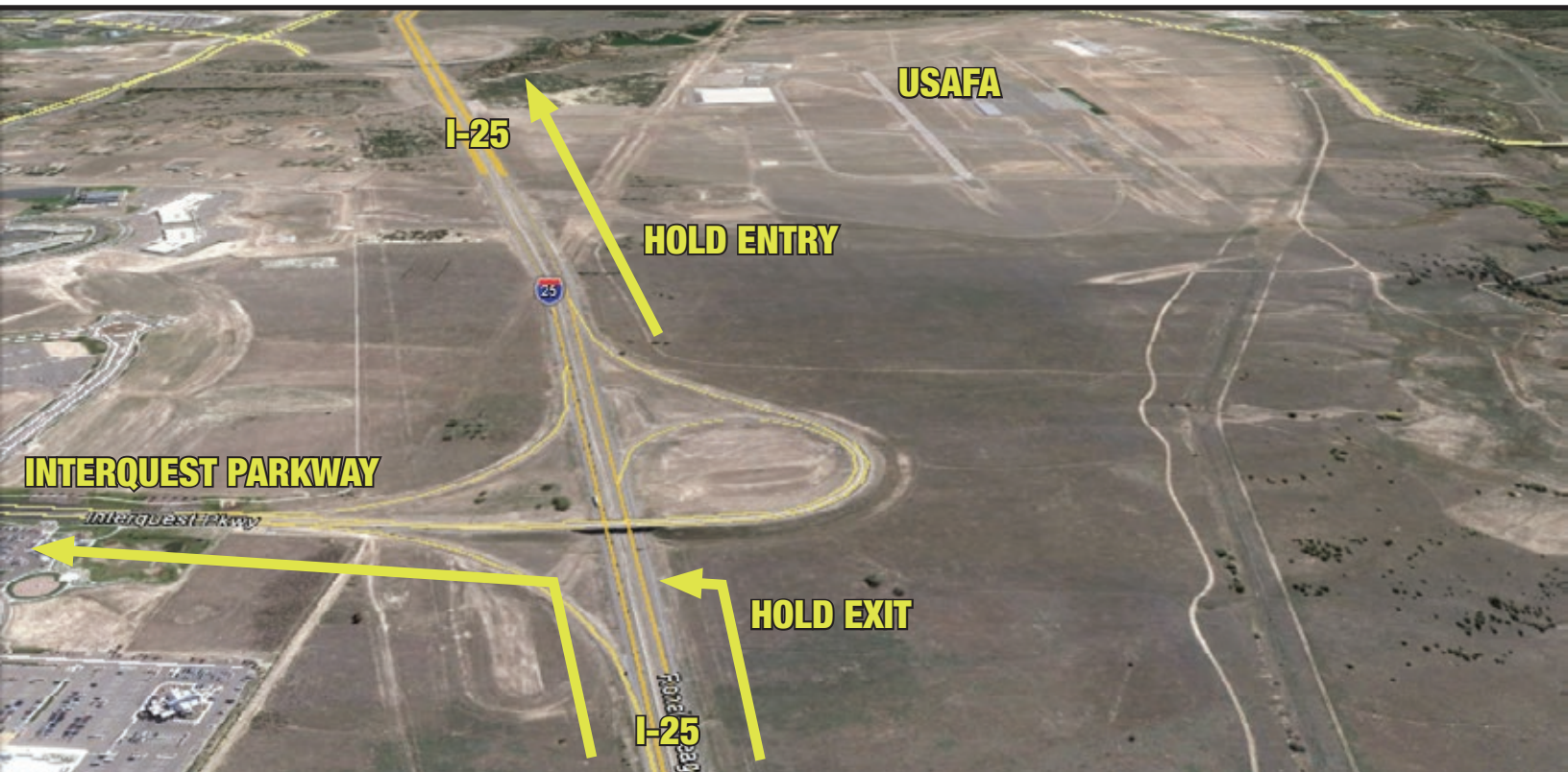
APPROACHING TURF CIRCLES EAST OF ELLICOTT, CO



APPROACHING INTERSECTION OF NORTHGATE BLVD & I-25—USAFA HOLD



APPROACHING USAFA HOLD ENTRY/EXIT AT INTERQUEST PKWY & I-25



MONUMENT ARRIVAL ROUTE: BLUE ROOF CHURCH ALONG INTERQUEST PARKWAY



INTERQUEST PARKWAY

MONUMENT ARRIVAL ROUTE: SOFTBALL FIELDS—LEFT BASE TURN, 35L



POWERS BLVD

USAFA (AFF)



MEADOW LAKE AIRPORT (FLY)



MEADOW LAKE AIRPORT FREQUENCIES

AWOS 118.45T TEL: 719.683.5371

FREMONT COUNTY AIRPORT (1V6)



FREMONT COUNTY AIRPORT FREQUENCIES

DENVER APPROACH	120.1	AWOS	120.025T	CTAF	122.8
-----------------	-------	------	----------	------	-------

PUEBLO MEMORIAL AIRPORT (PUB)



PUEBLO MEMORIAL AIRPORT FREQUENCIES

DENVER APPROACH	120.1	CLEARANCE DELIVERY	120.9	TOWER	119.1
ATIS	125.25 TEL: 719.948.2803	CTAF	119.1	UNICOM	122.95
		GROUND CONTROL	121.9		

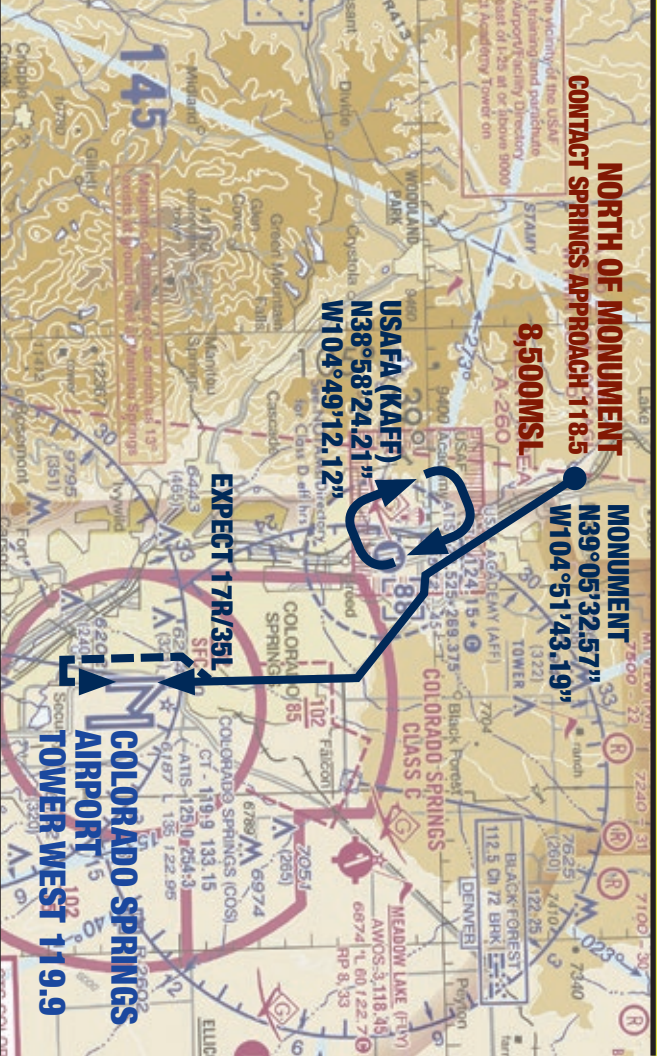


AOPA FLY-IN

PRINT AND PLACE IN AIRCRAFT WINDSHIELD

VFR PROCEDURES: NORTH - ARRIVAL OVER MONUMENT & USAFA HOLD

ATIS: 125.0 SPRINGS APPROACH: 118.5/120.6 COS TOWER: WEST 119.9/EAST 133.15



VFR PROCEDURES: NORTH - ARRIVAL OVER MONUMENT & USAFA HOLD

ATIS: 125.0 SPRINGS APPROACH: 118.5/120.6 COS TOWER: WEST 119.9/EAST 133.15

Obtain ATIS on 125.0 prior to reaching Monument, CO.

Arrival route begins over Monument, CO at 8,500 feet MSL.

Contact Springs Approach on 118.5 over Monument CO, and report N number; type aircraft, ATIS code, over Monument. Do not expect an immediate reply.

Continue inbound. Springs Approach will advise what runway to expect and whether holding will be required. If holding is necessary follow the USAFA holding graphic; 8,500 feet MSL, Right turns.

When advised by Springs Approach to depart the hold and continue inbound to COS, complete the remainder of the hold and exit at Interquest Parkway.

Inbound aircraft not in the hold at USAFA, stay east of I-25 until joining Interquest Parkway. Monitor Springs Tower on 119.9. Tower will contact you with landing clearance and/or other instructions.

Descend to traffic pattern altitude at pilot's discretion; 7,200 feet MSL.

Landing RWY 17R, follow Powers Blvd. toward COS, expect straight in for RWY 17R.

Landing RWY 35L, follow Powers Blvd. toward COS for left downwind for RWY 35L. Expect to turn base at softball fields prior to Milton East Proby Parkway.

Landing RWY 31, follow Powers Blvd. toward COS and fly left downwind to RWY 35L. Expect to turn an extended left base at the softball fields prior to Milton East Proby Parkway for RWY 31.

Be prepared to extend downwind or land on RWY 13.

Be prepared for spot landing.

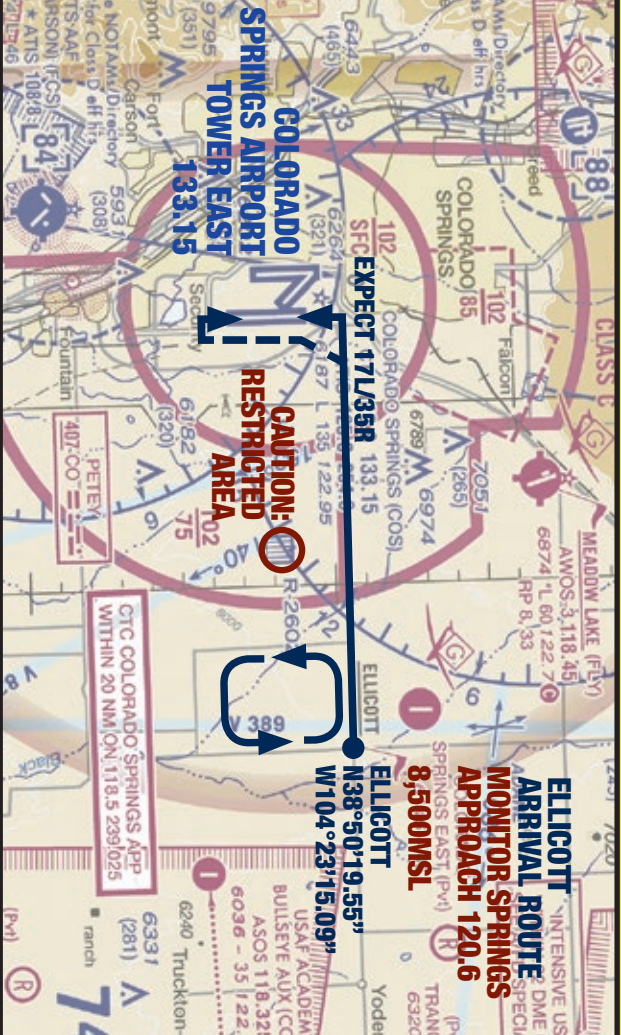
After landing, follow taxi diagram in NOTAM or as otherwise instructed by ATC.

Marshalls will direct and assist aircraft to parking spaces.



VFR PROCEDURES: EAST - ARRIVAL OVER ELLICOTT & ELLICOTT HOLD

ATIS: 125.0 SPRINGS APPROACH: 118.5/120.6 COS TOWER: WEST 119.9/EAST 133.15



VFR PROCEDURES: EAST - ARRIVAL OVER ELLICOTT & ELLICOTT HOLD

ATIS: 125.0 SPRINGS APPROACH: 118.5/120.6 COS TOWER: WEST 119.9/EAST 133.15

Obtain ATIS on 125.0 prior to reaching turf circles just east of Elliccott, CO.

Arrival route begins at turf circles just east of Elliccott, CO at 8,500 feet MSL. Follow highway 94 inbound and contact Springs Approach on 120.6 over the turf circles and report N number, type aircraft, ATIS code, over turf circles.

Springs Approach will advise to continue inbound, what runway to expect, and whether holding will be required. If holding is necessary follow the Elliccott holding graphic, 8,500 feet MSL, Left turns.

When advised by Springs Approach to continue inbound, complete the remainder of the hold and depart the hold at Elliccott.

Inbound aircraft not in the hold at Elliccott, or aircraft departing the hold should stay north of highway 94.

Once passed Elliccott, monitor Springs Tower on 133.15. Tower will contact you with landing clearance and/or other instructions.

Descend to traffic pattern altitude at pilot's discretion; 7200 feet MSL.

Landing RWY 17L, follow highway 94 to COS and expect to enter a left base for RWY 17L.

Landing RWY 35R, follow highway 94 to COS and expect to enter a right downwind for RWY 35R. Be prepared land on RWY 13 as well.

Be prepared for spot landing.

After landing, follow taxi diagram in NOTAM or as otherwise instructed by ATC.

Marshallsers will direct and assist aircraft to parking spaces.



AOPA FLY-IN: COLORADO SPRINGS : NOT FOR NAVIGATION PURPOSES

VFR PROCEDURES: EAST - ARRIVAL OVER ELLICOTT & ELLICOTT HOLD

ATIS: 125.0 SPRINGS APPROACH: 118.5/120.6 COS TOWER: WEST 119.9/EAST 133.15



AOPA FLY-IN: COLORADO SPRINGS : NOT FOR NAVIGATION PURPOSES