



NOTAM

Aircraft Owners and Pilots Association (AOPA) Fly-In
Colorado Springs Airport (COS)—Colorado Springs, CO

SPECIAL FLIGHT PROCEDURES

EFFECTIVE 12:00 Noon Local Friday, September 25, 2015
Until 6:00 PM Local Saturday, September 26, 2015

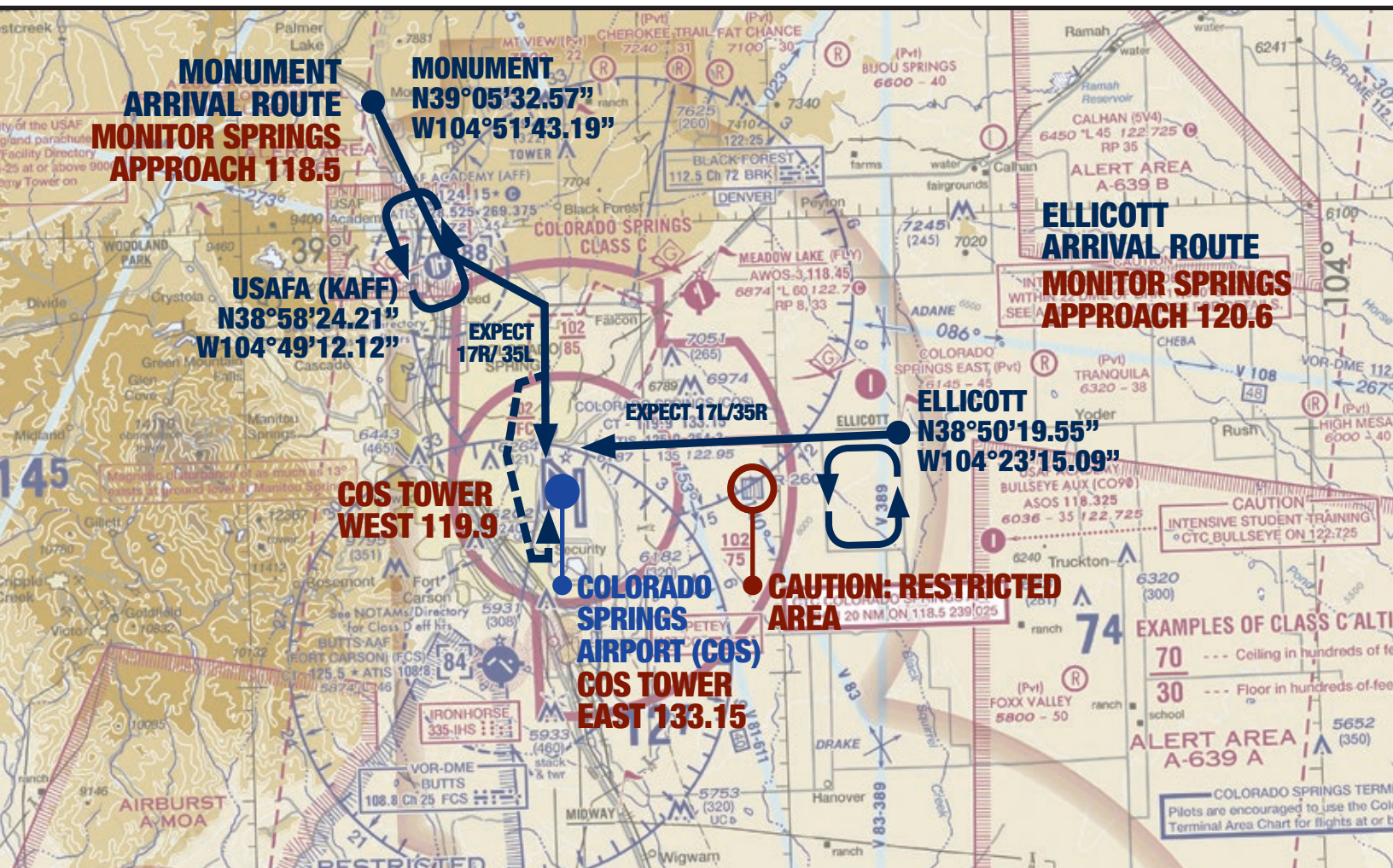
TEMPORARY VFR PROCEDURES

Specific procedures contained within this NOTAM may be revised or unavailable at the time of the event. Users are encouraged to check NOTAMs frequently to verify they possess the most current revisions. This NOTAM does not supersede restrictions pertaining to the use of airspace contained in FDC NOTAMS.

In anticipation of a larger than normal number of aircraft operating to and from Colorado Springs Airport in conjunction with the AOPA Fly-In, the following procedures will be used to enhance safety and minimize delays.



VFR ARRIVALS OVERVIEW



ATIS: 125.0 SPRINGS APPROACH: 118.5/120.6 COS TOWER: WEST 119.9/EAST 133.15

Two (2) VFR arrival routes have been established to accommodate aircraft flying to the event. All VFR arrivals must begin over Monument, CO (19NM Northwest of Colorado Springs Airport (COS)) or over Ellicott, CO (15NM East/Northeast of Colorado Springs Airport (COS)). The following procedures will be used to enhance safety and minimize air traffic delays during the AOPA Fly-In at Colorado Springs Airport (COS).

All Fly-In aircraft transitioning Denver airspace north of Colorado Springs should remain outside of the Denver Class Bravo Airspace. Use caution

west of Centennial Airport (APA) for arrivals to COS.

Fly-in aircraft transitioning Denver are encouraged to contact Denver Departure on 132.75 over Castle Rock-Southbound (N39°18'00.00\"/>

Fly-in aircraft transitioning the Pueblo area, contact Denver Departure on 120.1

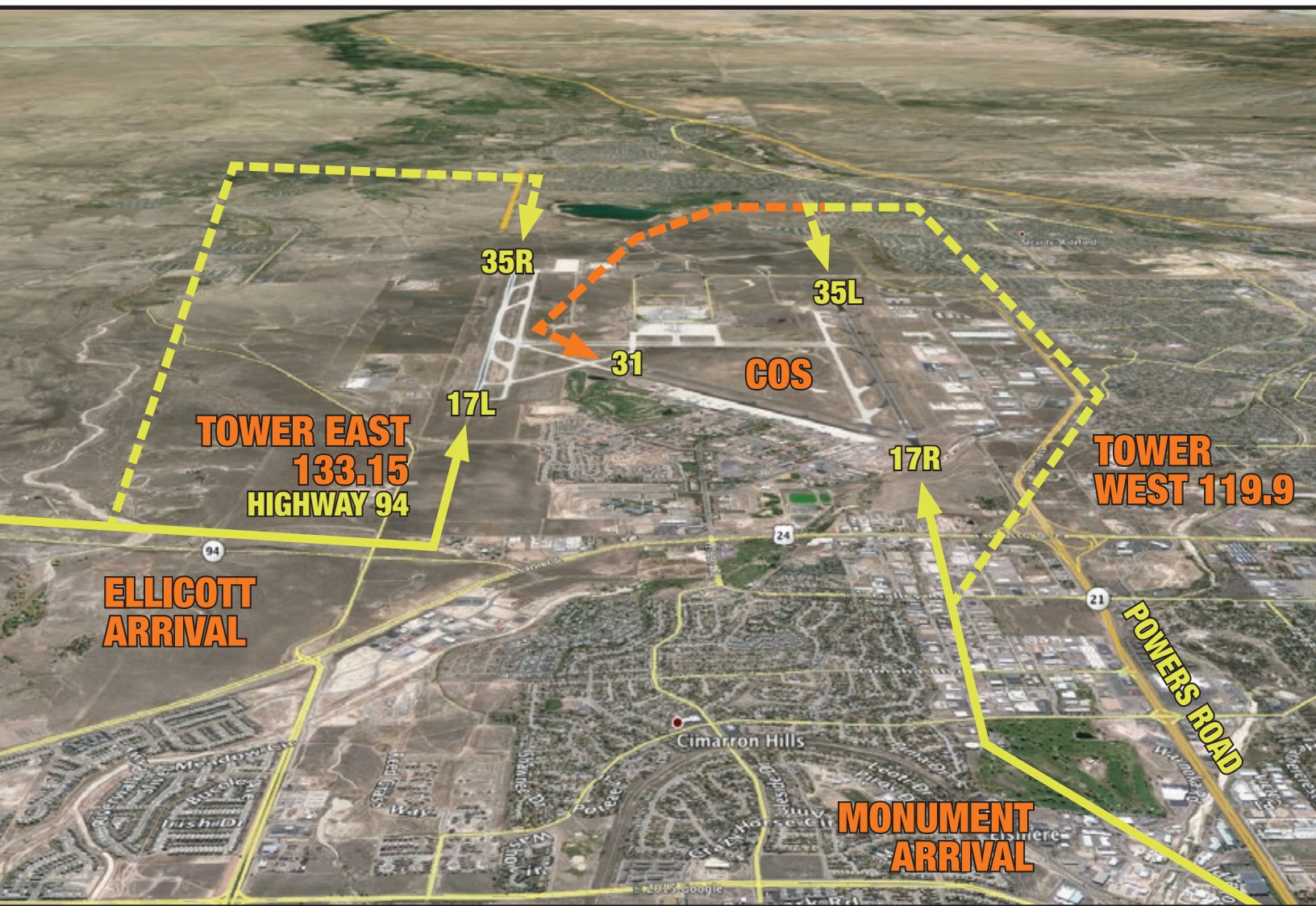
All aircraft should follow the same routes and plan for sequencing to runways accordingly.

Instructions to “MONITOR” mean that pilots should TUNE & LISTEN but NOT TALK unless called or given a clearance.

No Practice Approaches or practice instrument procedures will be available at surrounding airports during the AOPA Fly-In at Colorado Springs Airport (COS).

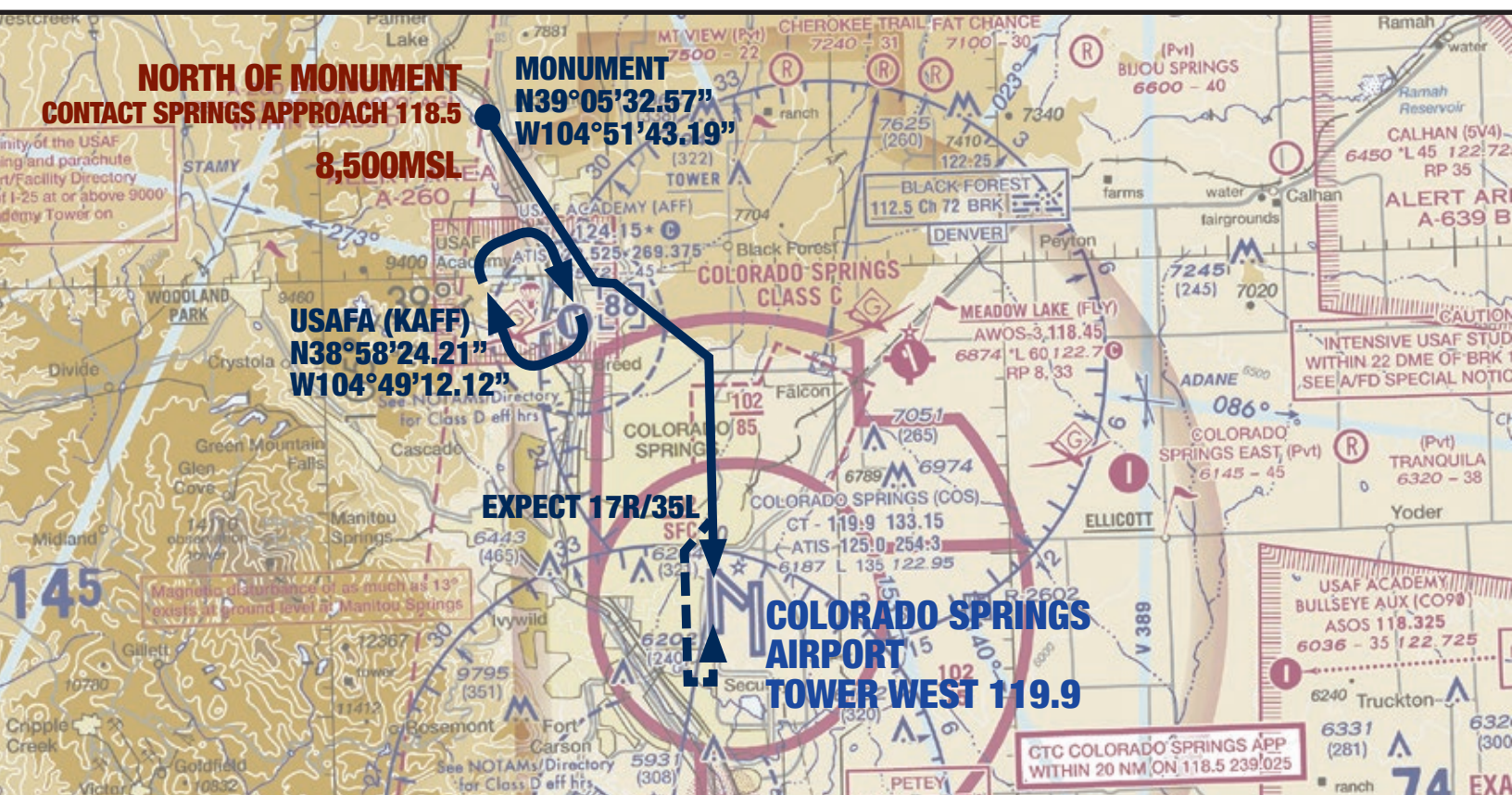
CAUTION: Watch for converging traffic when joining any published arrival route.

RUNWAY APPROACH OVERVIEW



ATIS: 125.0 SPRINGS APPROACH: 118.5/120.6 COS TOWER: WEST 119.9/EAST 133.15

VFR PROCEDURES: ARRIVALS OVER MONUMENT



ATIS: 125.0 SPRINGS APPROACH: 118.5 COS TOWER WEST: 119.9

Obtain ATIS on 125.0 prior to reaching Monument, CO.

This arrival route begins over Monument, CO at 8,500 feet MSL. Follow I-25 from Castle Rock, CO south toward Monument, CO and remain clear of Denver International Airport (DEN) Class B airspace.

When arriving over Monument, CO contact Springs Approach on 118.5 and report *N* number, *type aircraft*, *ATIS code*, over Monument. Do not expect an immediate reply from Springs Approach.

Continue inbound. Springs Approach will advise what runway to expect and whether holding will be required. If holding is necessary enter the holding pattern west of I-25 over the U. S. Air Force Academy campus. Right turns. *See the USAFA holding graphic.*

When advised by Springs Approach to depart the hold and continue inbound to

COS, complete the remainder of the hold and exit at Interquest Parkway.

Inbound aircraft not in the hold at USAFA, stay east of I-25 until joining Interquest Parkway. Monitor Springs Tower on 119.9. Tower will contact you with landing clearance and/or other instructions.

Descend to traffic pattern altitude at pilot's discretion; 7,200 feet MSL.

If instructed to land on RWY 17R, follow Powers Blvd. toward COS and expect a straight in landing for RWY 17R.

If instructed to land on RWY 35L, follow Powers Blvd. toward COS for a left downwind entry to RWY 35L. Expect to turn base at the softball fields prior to Milton East Proby Parkway.

If instructed to land on RWY 31, follow Powers Blvd. toward COS and fly a left downwind to RWY 35L. Expect to turn an extended left base at the softball fields prior

to Milton East Proby Parkway for RWY 31.

Be prepared to extend downwind or land on RWY 13. Follow instructions from Tower.

After landing, exit the runway as quickly and as safely as possible. Keep moving after exiting the runway so as not to block subsequent arrivals. Follow taxi instructions to the designated parking areas.

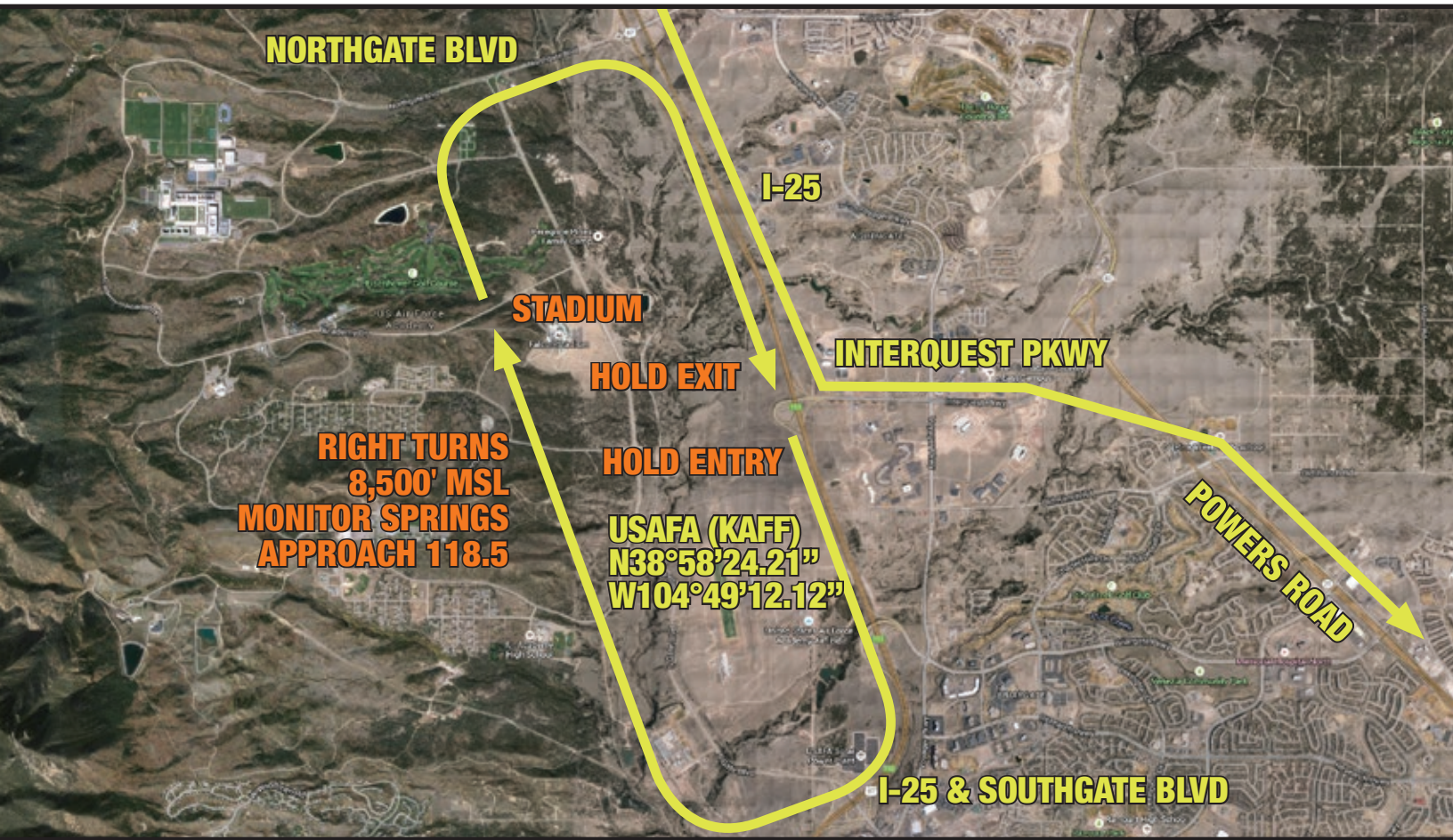
If landing RWY 35L or 17R, expect to exit at A5, A4, or A2 to parking.

If landing RWY 35R, expect to exit at E4 and taxi via G, C, C7, A7, A4 to parking or taxi via B, B1, A1, A, A2 to parking.

If landing RWY 31, expect to exit at B4 and taxi via B, B1, A1, A, A2 to parking.

Marshalls will direct and assist aircraft to parking spaces.

VFR HOLDING PATTERN: USAFA HOLD



TPA: 7,200' MSL

17R

35L

SOFTBALL FIELDS

24

21

S Powers Blvd

Highway 24

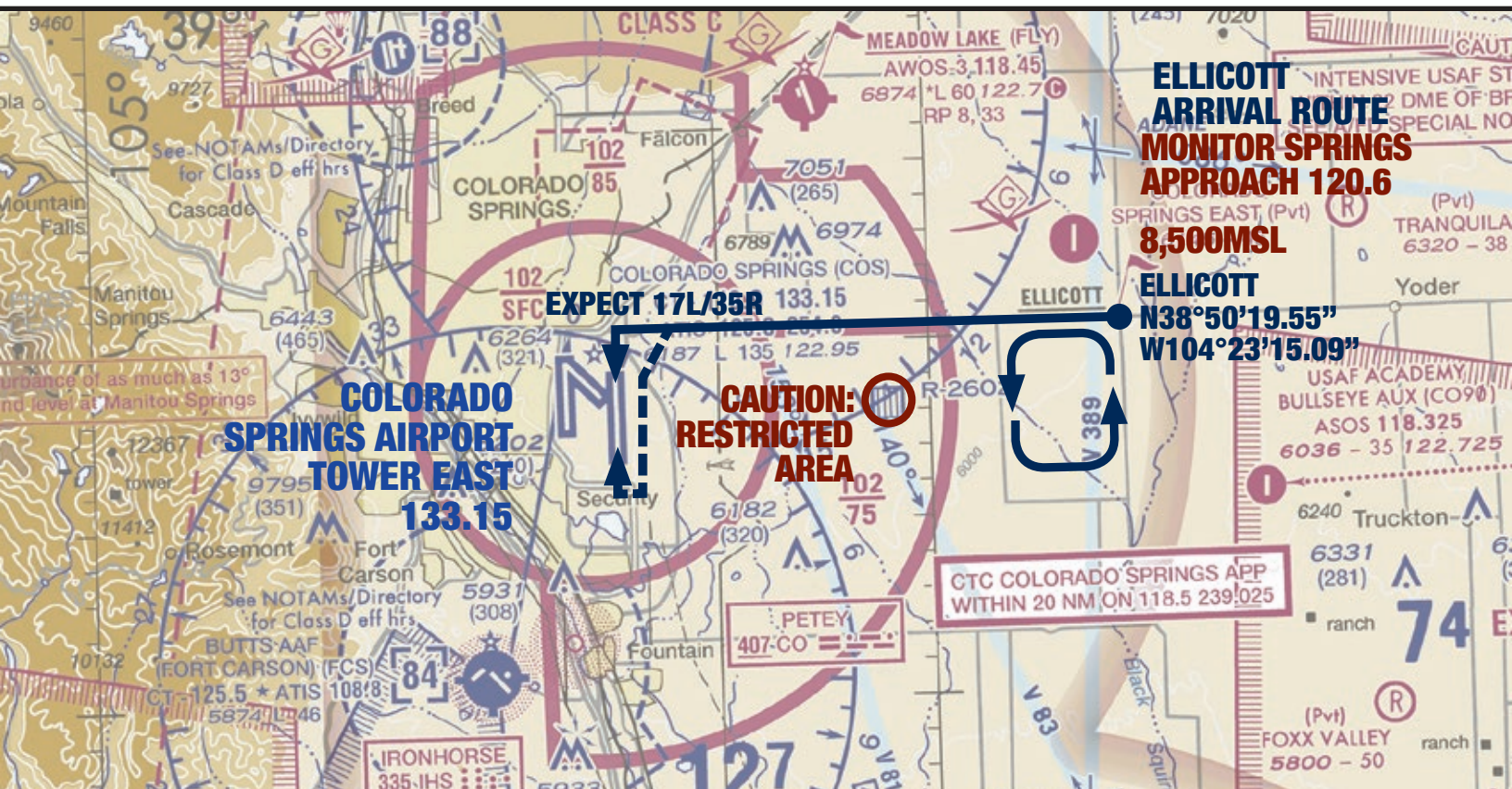
Highway 21

Milton E. Roby Pkwy

Mar

ATIS: 125.0 SPRINGS APPROACH: 118.5 COS TOWER WEST: 119.9

VFR PROCEDURES: ARRIVALS OVER ELLICOTT



ATIS: 125.0 SPRINGS APPROACH: 120.6 COS TOWER EAST: 133.15

Obtain ATIS on 125.0 prior to reaching turf circles just east of Ellicott, CO.

This arrival route begins at the turf circles just east of Ellicott, CO at 8,500 feet MSL. Follow highway 94 inbound and contact Springs Approach on 120.6 prior to arriving over the turf circles and report N number, type aircraft, ATIS code, and over turf circles.

Springs Approach will advise to continue inbound, what runway to expect, and whether holding will be required. If holding is necessary enter the holding pattern around Ellicott, CO south of highway 94, left turns. *See the Ellicott holding graphic.*

When advised by Springs Approach to depart the hold and continue inbound to COS, complete the remainder of the

hold and depart the hold at Ellicott.

Inbound aircraft not in the hold at Ellicott, or aircraft departing the hold should stay north of highway 94.

After passing Ellicott, monitor Springs Tower on 133.15. Tower will contact you with landing clearance and/or other instructions.

Descend to traffic pattern altitude at pilot's discretion; 7,200 feet MSL.

If instructed to land on RWY 17L, follow highway 94 to COS and expect to enter a left base for RWY 17L.

If instructed to land on RWY 35R, follow highway 94 to COS and expect to enter a right downwind for RWY 35R.

Be prepared land on RWY 13 as well.

Follow instructions from Tower.

After landing, exit the runway as quickly and as safely as possible. Keep moving after exiting the runway so as not to block subsequent arrivals. Follow taxi instructions to the designated parking areas.

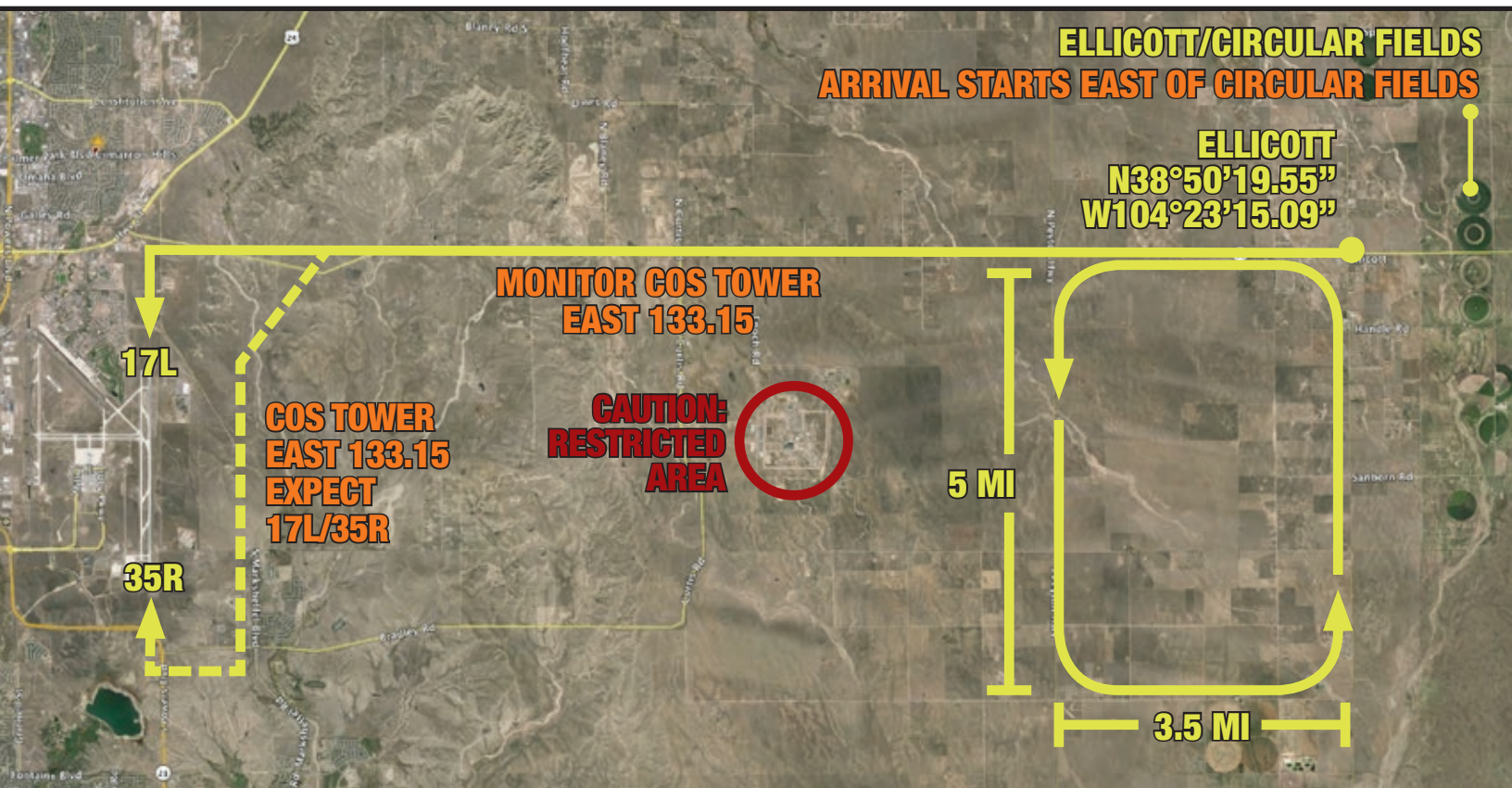
If landing RWY 17L, expect to exit at E4 and taxi via G, C, C7, A7, A4 to parking or taxi via B, B1, A1, A, A2 to parking.

If landing RWY 35R, expect to exit at E4 and taxi via G, C, C7, A7, A, A4 to parking or taxi via B, B1, A1, A, A2 to parking.

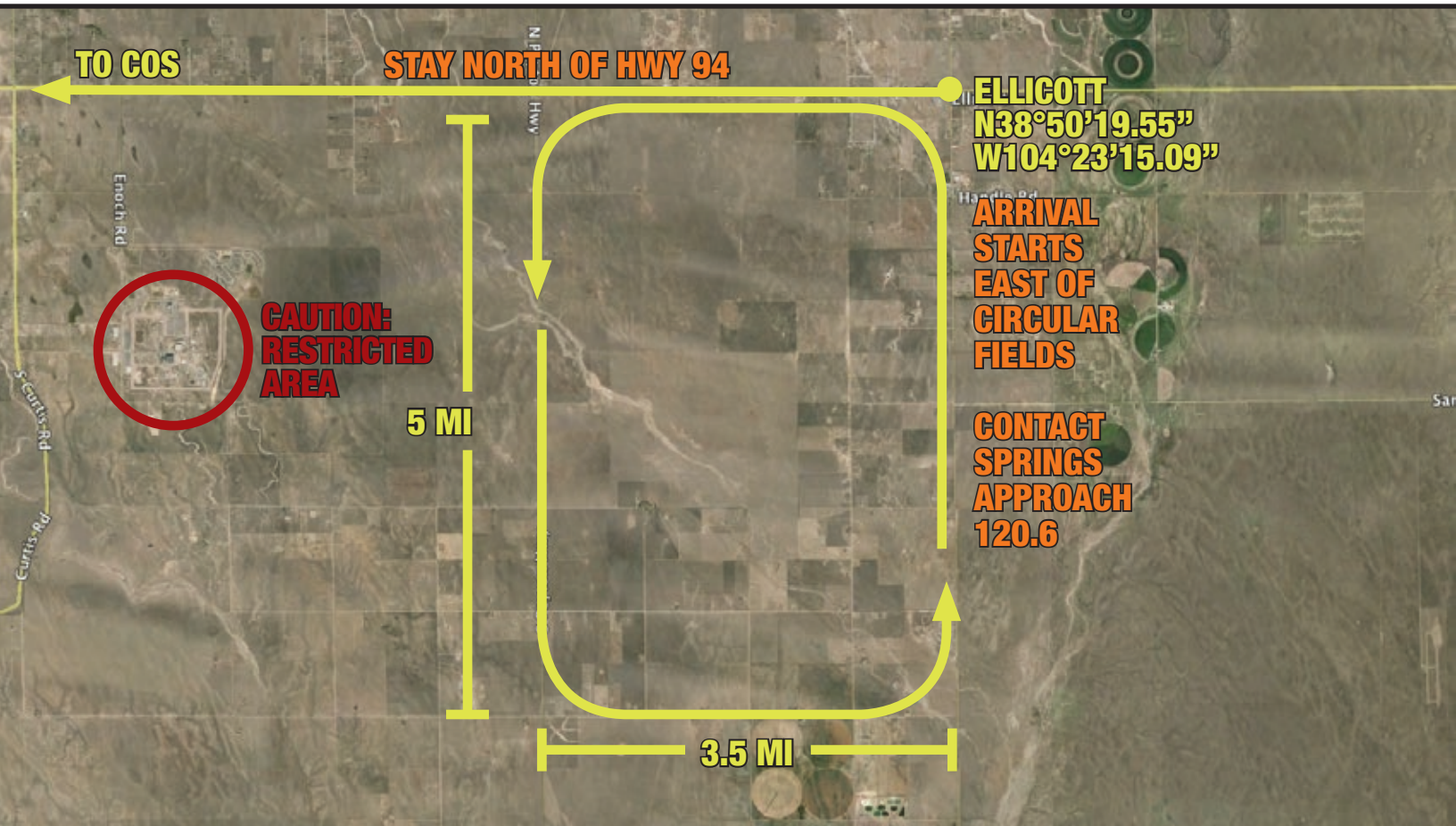
If landing RWY 13, expect to exit at B5 and taxi via B, B1, A1, A, A2 to parking.

Marshalls will direct and assist aircraft to parking spaces.

VFR PROCEDURES: ARRIVALS OVER ELLICOTT



VFR HOLDING PATTERN: ELLICOTT HOLD



VFR LANDING PATTERNS: LANDING FROM ELLICOTT @ COS



ATIS: 125.0 SPRINGS APPROACH: 120.6 COS TOWER EAST: 133.15

IFR ARRIVALS

IFR Delays

IFR delays may be incurred when arrival rates exceed airport capacity. Pilots should be prepared for the potential holding of IFR arrivals to Colorado Springs Airport. Please plan accordingly.

IMPORTANT INFORMATION

Pilots are urged to review all applicable NOTAMs and arrival/departure procedures prior to conducting flight to Colorado Springs Airport. IFR flight plans should be filed at least 6 hours prior to proposed departure time. Pilots are encouraged to get flight following or traffic advisories as far out as possible. See Frequency map.

LOCAL TRAINING AND PRACTICE APPROACHES

Local traffic pattern, closed traffic training, and practice instrument approaches will not be available at Colorado Springs Airport during the AOPA Fly-In. Practice approaches at USAF Academy Airport (AFF) and Pueblo Memorial (PUB), Centennial Airport (APA), and Butts AAF (FCS) will not be available during the event.

CAUTIONS

Denver International Airport Class B Airspace; 20NM North of Colorado Springs Airport (COS)

Colorado Springs Airport Class C Airspace

Pueblo Memorial Airport Class D Airspace; 32NM Southeast of Colorado Springs Airport (COS)

Centennial Airport Class D Airspace; 46NM Northwest of Colorado Springs Airport (COS)

USAF Academy Airport Class D Airspace; 11NM Northwest of Colorado Springs Airport (COS)

Rapidly rising terrain North, West, and South of airport

Restricted area R-2602; 8 NM East of Colorado Springs Airport (COS)

Restricted area R-2601 A & B; 7 NM Southwest of Colorado Springs Airport (COS)

Alert Area A-639B and A-639A Northeast, East, and Southeast of Colorado Springs Airport (COS)

Density Altitude

ADDITIONAL AIRSPACE OPERATIONS AND MILITARY

Intensive flight training, military, and parachute activity throughout the Greater Colorado Springs / Denver Area. See Denver/Colorado Springs Terminal Area Chart for specific areas.

Use caution for extensive flight training, glider, and parachute jump operations in the vicinity of area airports.

Kelly Airpark Airport (Private) has numerous gliders and ultra-lights in the vicinity of the airport. Aircraft transitioning aircraft to Colorado Springs Airport (COS) are encouraged to remain just along of Interstate 25 to avoid the Kelly Airpark glider area. **Military Training:** USAF Academy (KAFF), Butts AAF (KFCS), and Pueblo Memorial (KPUB) are home to various military training aircraft so use extreme caution when transitioning from any direction to the VFR Arrival route.

NOTE: Be advised that air operations stake-holders from the following airports and military operations have agreed to suspend activities, as noted below, during the effective time of this NOTAM. Continue to use caution in these areas, as pilots and flight crews must adhere to regulations to see and avoid in all cases.

SITES SUSPENDING OPERATIONS TO ACCOMMODATE COS FLY-IN

Civilian Operations

Area Airports	from COS	Suspending all non-emergency ops
CO49: Colorado Springs East	14NM East	NO training aircraft/glider
CO50: USAFA Bullseye Aux	19NM East	
CO15: Kelly Air Park	24NM North	NO parachute jump

Military Flight Operations

Alert Areas

A-260 (USAF Academy)

A-639A/B

Suspending all non-emergency ops

MOAs

AIRBURST (SSW KCOS)

NO SUA Activity (Alert & M.O. Areas)

Airports

KAFF Academy: USAFA

NO training aircraft/glider/UAS

KFCS Butts AAF: US Army

NO parachute jump

KCOS Peterson AFB: USAF

KPUB Doss Aviation: USAF

FREQUENCIES & WAYPOINT INFORMATION

Colorado Springs Airport Frequencies

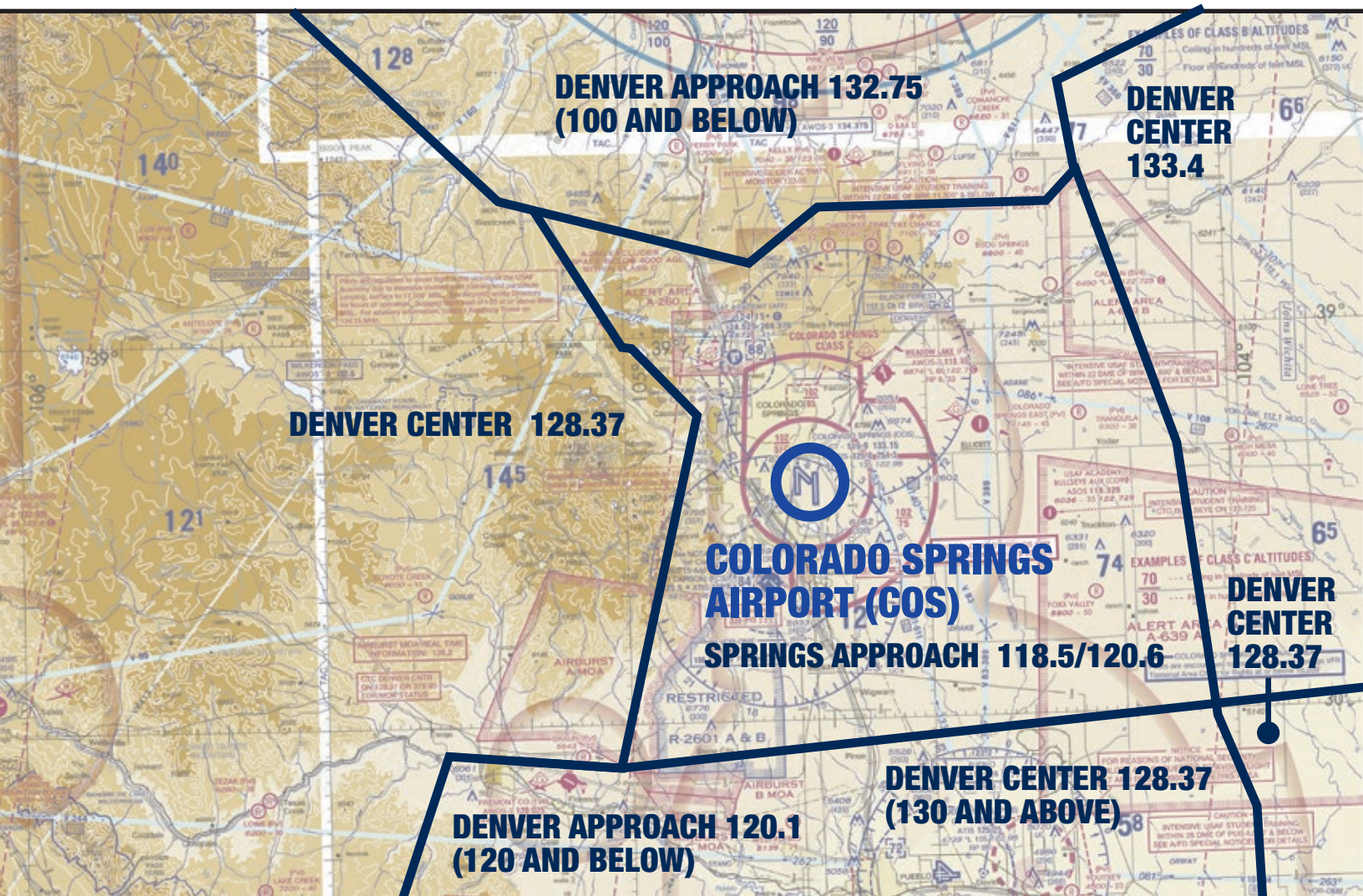
Initial Position Call: Springs Approach	See VFR Arrival Details
Springs Approach: Monument	118.5
Springs Approach: Ellicott	120.6
Atis	125.0 (719.637.9696)
Tower East—Runway 17L/35R	133.15
Tower West—Runway 17R/35L	119.9
Ground	121.7
Unicom	122.95
Departure	124.0
FSS	122.25

*See frequency graphic for correct facility to contact depending on position

Specific Latitude/Longitude Coordinates

Monument, CO	N39°05'35.87" W104°52'19.08"
USAFA (AFF)	N38°58'22.54" W104°49'13.33"
Crop circles	N38°50'20.24" W104°21'19.29"
Ellicott, CO	N38°50'17.70" W104°23'14.33"
Colorado Springs Airport (COS)	N38°48'40.01" W104°42'12.47"

FREQUENCY OVERVIEW



ATIS: 125.0 COS TOWER: WEST 119.9/EAST 133.15 COS GROUND: 121.7

GENERAL INFORMATION COLORADO SPRINGS AIRPORT



ATIS: 125.0 COS TOWER: WEST 119.9/EAST 133.15 COS GROUND: 121.7

Parking Areas:

When operating in the parking areas, pilots are encouraged to be extra alert for taxiing aircraft, aircraft with engine(s) running, and vehicle/pedestrian traffic. Ground support personnel will be assisting aircraft to and from parking areas and run-up areas. For safety reasons, high RPM engine running is prohibited outside

of designated run-up areas. Please review the parking map prior to landing and departure. This will brief you on the correct taxi routes.

Vehicular Traffic:

Vehicles are not allowed on ramps except those belonging to airport operators and tenants, and exhibitors participating in the AOPA Colorado Springs Airport Fly-In.

Pre-flight Planning:

Please ensure that you have reviewed the special flight information, departure procedures, and temporary taxi procedures prior to engine start. High traffic density is expected Saturday morning and afternoon. Consider arriving during off-peak hours.

LANDING PROCEDURES

Colorado Springs tower will be utilizing a reduced separation concept to increase the arrival rate to four aircraft per minute. Landing clearance will include a designated touchdown and exit point. Study the touchdown points below, and on the attached graphic.

Runway 17R - KCOS

- Touchdown A1, exit A2 / (C3)
- Touchdown A3, exit A5 / (end)
- South of A5 will be closed portion of rwy for crossing a/c

Runway 17L - KCOS

- Touchdown E2, exit E4

Runway 35L - KCOS

- Touchdown at numbers, exit at A5 / (A4)
- Touchdown at A3, exit at A2 / (C3)
- North of A2 will be closed portion of rwy for crossing a/c

Runway 31 - KCOS

- Touchdown B5, exit B4 / (end)

Runway 35R - KCOS

- Touchdown E5, exit E4

LANDING PROCEDURES: 35L



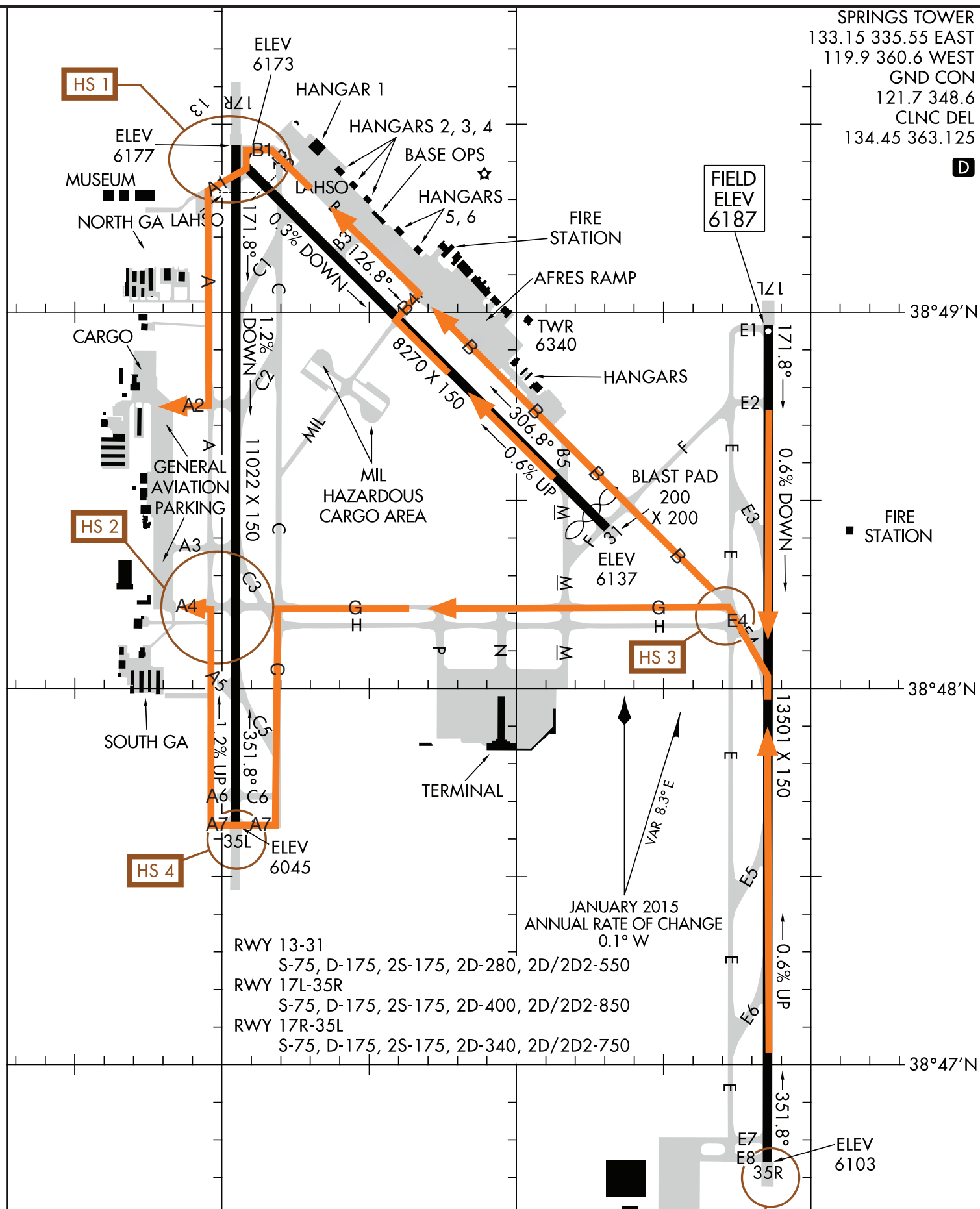
LANDING PROCEDURES: 17R



LANDING PROCEDURES: 31



TAXI PROCEDURES: COLORADO SPRINGS AIRPORT



DEPARTURE PROCEDURES: COLORADO SPRINGS AIRPORT

IFR Departures

All IFR departures will follow normal procedures and obtain their clearance through clearance delivery. COS Clearance Delivery is on 134.45; If needed, an alternate Clearance Delivery frequency will be broadcast on COS ATIS 125.0.

VFR Departures

VFR Flight Following: Aircraft requesting advisories on departure must request flight following with COS Clearance Delivery on 134.45 **prior** to departure. Aircraft not requesting flight following prior to departure **will not** be provided the service.

Prior to Start-up: Please ensure that you have reviewed the special flight information, departure procedures, and temporary taxi procedures prior to engine start. Obtain ATIS on 125.0.

Run-up: After start-up, contact ground when you are ready to taxi and provide N number, direction of flight, destination, request for flight following if desired, and ATIS code. Follow taxi instructions and proceed to the nearest designated run-up area,

Taxi: When run-up is complete, follow taxi instructions from ground.

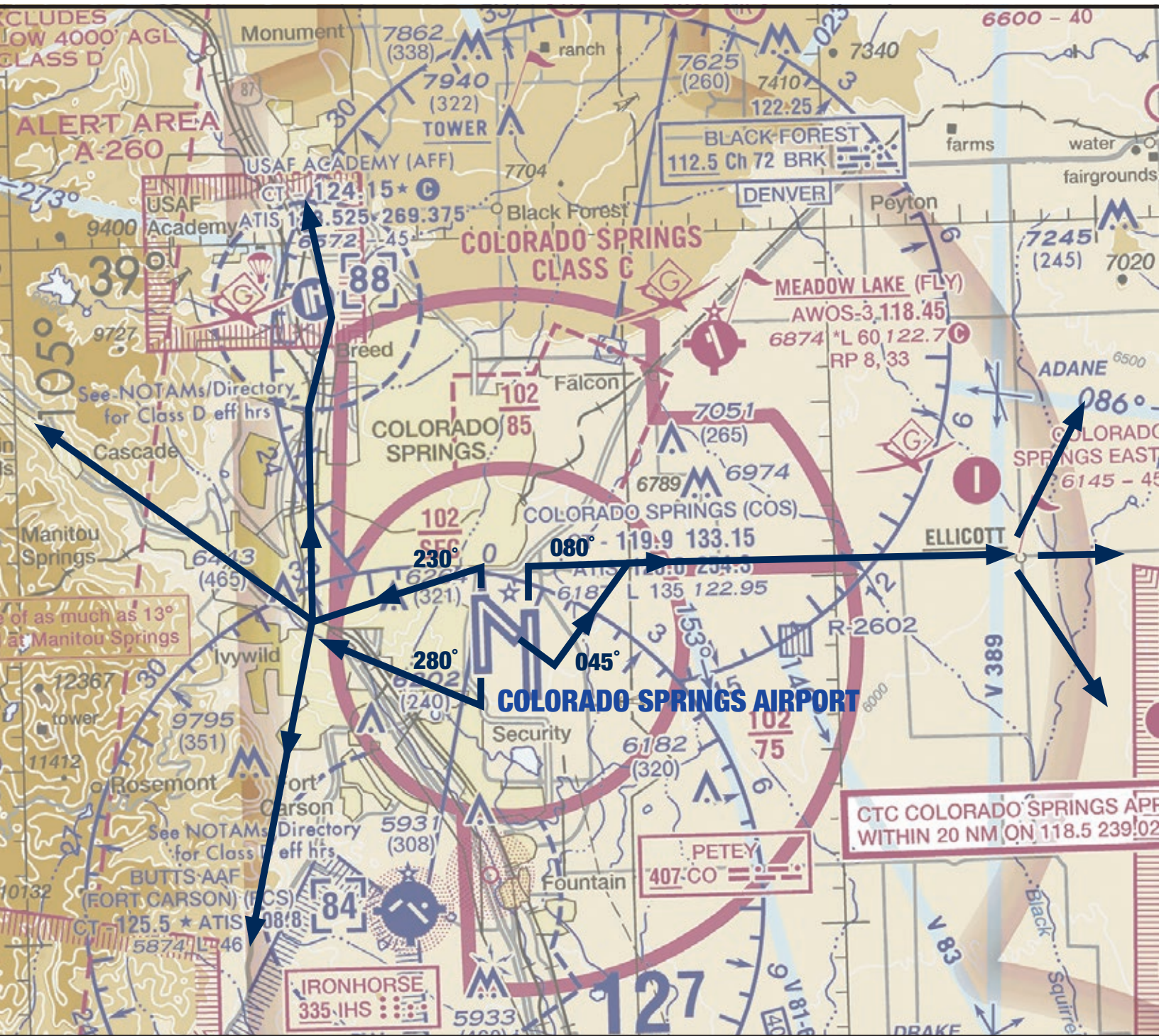
Monitor the tower frequency on 119.9 (or as assigned.) Contact tower when number one for departure.

Departure: Follow depicted departure routes in the *Departure Procedures graphic* unless otherwise instructed by ATC.

If departing runway 13, **do not start turn** to the North to highway 94 until after passing runway 17L/35R and remain at or below 8,500' MSL unless otherwise instructed by ATC.

If departing Westbound, **do not start turn** on course until reaching Interstate 25.

DEPARTURE PROCEDURES: COLORADO SPRINGS AIRPORT



DEPARTURE TAXI PROCEDURES: COLORADO SPRINGS AIRPORT

