

AOPA FLY-IN

MICHAEL J SMITH FIELD (KMRH)

NOTAM

MAY 20-21 | BEAUFORT, NC

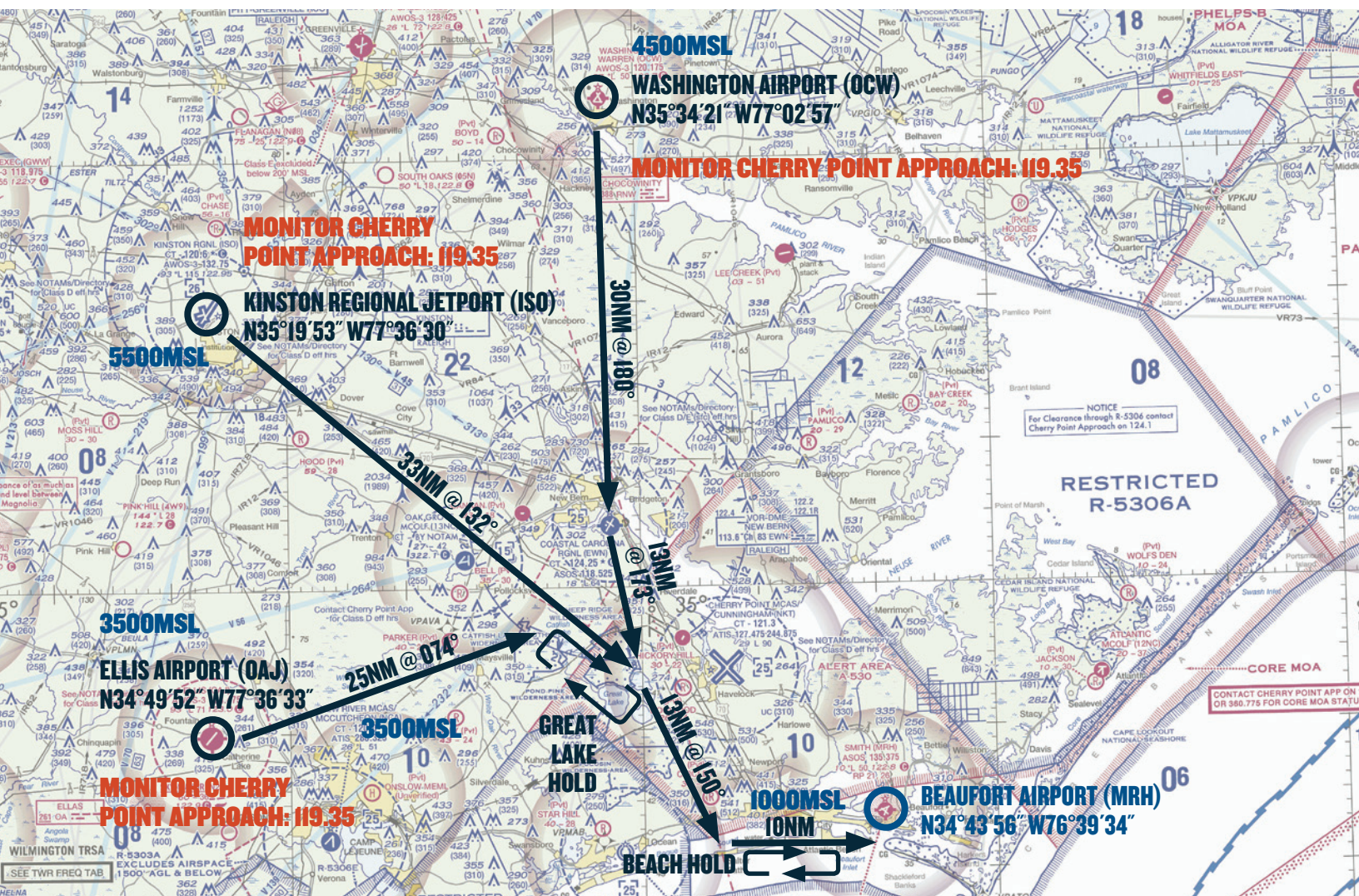
|||||

SPECIAL FLIGHT PROCEDURES EFFECTIVE

12:00 Noon EDT Until 8:00PM EDT Friday, May 20, 2016
and 6:00AM EDT Until 8:00PM EDT Saturday, May 21, 2016



VFR ARRIVALS OVERVIEW



AWOS: 135.375

CHERRY POINT APPROACH: 119.35

BEAUFORT ADVISORY: 119.65

MRH UNICOM: 122.8

TEMPORARY VFR PROCEDURES

Specific procedures contained within this NOTAM may be revised at the time of the event. Pilots are urged to review all applicable NOTAMs and arrival/departure procedures prior to conducting a flight to Beaufort Airport. Users are encouraged to check NOTAMs frequently to verify they possess the most current revisions. This NOTAM does not supersede restrictions pertaining to the use of airspace contained in FDC NOTAMS.

VFR ARRIVALS

All VFR arrivals must begin over Washington-Warren Airport (OCW); 54 nautical miles northwest of MRH, Kinston Regional Jetport (ISO); 59 nautical miles west-northwest of MRH, or Albert J Ellis Airport (OAJ); 47 nautical miles west of MRH.

BEAUFORT ADVISORY CONTROL: 119.65

AirBoss will be operating an advisory service on 119.65 during the effective hours of the NOTAM. Non-federal controllers will be providing advisories to aircraft operating on the surface and to and from Beaufort Airport (MRH) to ensure a constant and even flow of traffic. Follow standard non-towered airport operations all other times.

Pilots should communicate on 119.65 during effective hours of the NOTAM. If unable to contact Beaufort Advisory on 119.65, broadcast position and intentions on Beaufort UNICOM 122.8.

ARRIVALS OVER WASHINGTON-WARREN AIRPORT (OCW)



This arrival procedure begins over Washington-Warren Airport (OCW) at 4,500 feet MSL. Pilots should tune in and **MONITOR ONLY** Cherry Point Approach on 119.35 after arriving over OCW for information and updates on traffic conditions at Beaufort Airport (MRH).

Proceed from OCW to Coastal Carolina Regional Airport (EWN). (Approximate heading 180 degrees.) Descend to 3,500 feet MSL prior to reaching EWN. After overflying EWN, fly approximately a 170 degree heading to Long Lake just northeast of Great Lake.

MSL. When holding is no longer required, aircraft inbound in the hold toward Catfish Lake should return to the beginning of the hold at Catfish Lake and then proceed toward Great Lake and Long Lake.

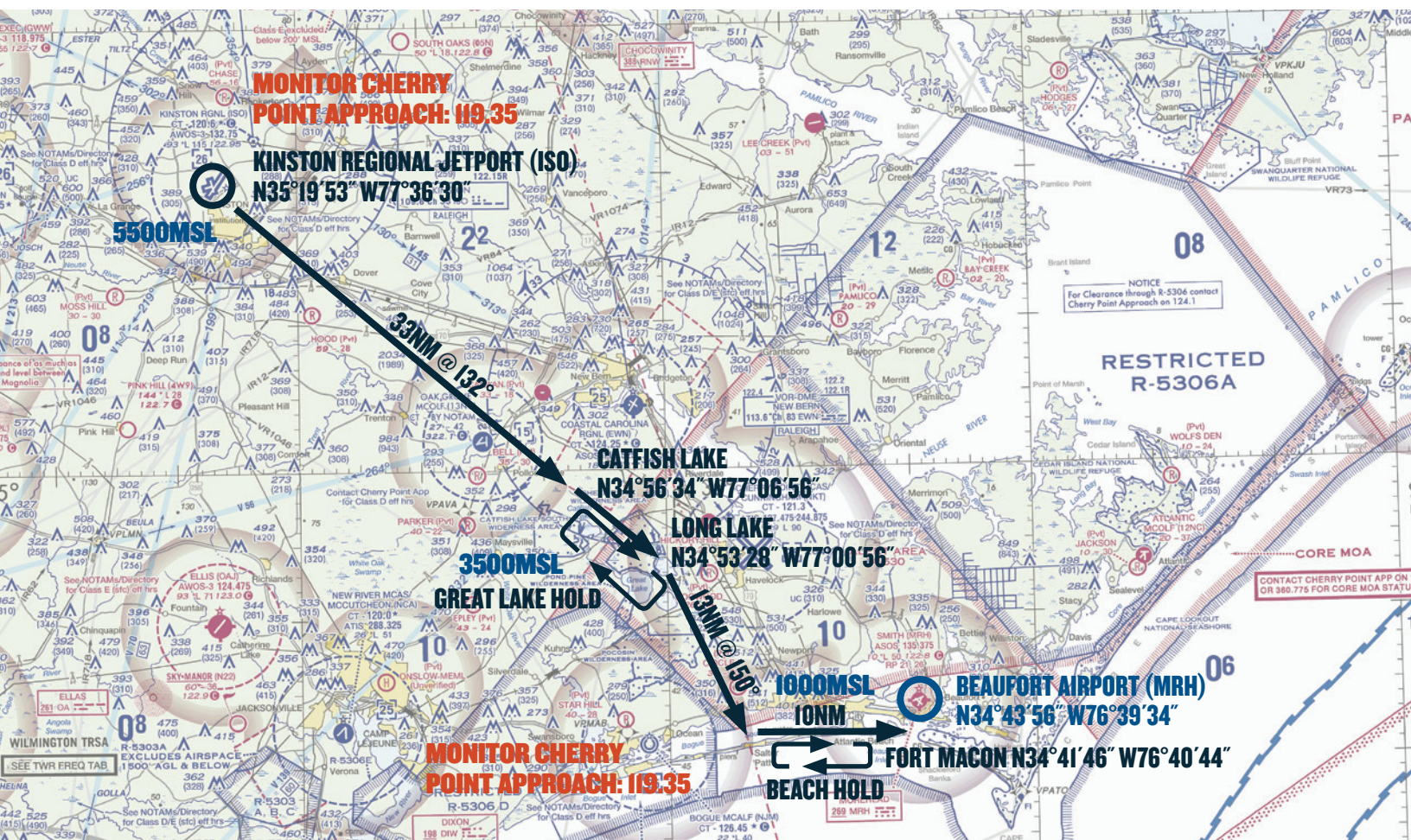
From Long Lake, fly approximately a 150 degree heading toward Bogue Sound. Tune in and **MONITOR** Beaufort Advisory on 119.65 just prior to reaching Bogue Sound. At Bogue Sound, turn left and fly east down the middle of the sound to Fort Macon. **Begin descent to pattern altitude; 1,000 feet MSL.** Report on Beaufort Advisory 119.65 when over the Atlantic Beach Bridge; approximately 3 nautical miles from Fort Macon. Example: *“Beaufort Advisory, Ercoupe 1234 over Atlantic Beach Bridge inbound with AWOS.”*

In the event that traffic volume requires holding, follow the holding procedure as depicted in the *Beach Hold graphic*. All aircraft should fly right turns at 1,000 feet MSL. When holding is no longer required, aircraft outbound from Fort Macon should return to the beginning of the hold over the town of Salter Path and then proceed toward Fort Macon staying in the middle of Bogue Sound and reporting on Beaufort Advisory 119.65 when over Atlantic Beach Bridge.

After landing, exit the runway as quickly and as safely as possible. Do not stop on the runway unless absolutely necessary. Keep moving after exiting the runway so as not to block subsequent arrivals. Follow taxi instructions and directional signs to the designated parking areas. Marshallers will direct aircraft to parking.

VFR PROCEDURES

ARRIVALS OVER KINSTON REGIONAL JETPORT (ISO)



AWOS: 135.375 CHERRY POINT APPROACH: 119.35 BEAUFORT ADVISORY: 119.65 MRH UNICOM: 122.8

CHECK BEAUFORT AWOS ON 135.375 AS SOON AS PRACTICAL.

This arrival procedure begins over Kinston Regional Jetport (ISO) at 5,500 feet MSL.

Pilots should tune in and **MONITOR** ONLY Cherry Point Approach on 119.35 after arriving over ISO for information and updates on traffic conditions at Beaufort Airport (MRH).

Caution: Stay alert for converging traffic.

Proceed from ISO to the northwest corner of Catfish Lake and begin descent to 3,500 feet MSL when clear of Kinston's Class D airspace. (Approximate heading to Catfish Lake is 132 degrees.)

Caution: Stay alert for converging traffic.

Proceed from Catfish Lake toward Great Lake and Long Lake. In the event that traffic volume requires holding, follow the holding procedure as depicted in the *Great Lake Hold* graphic. All aircraft should fly right turns at

3,500 feet MSL. When holding is no longer required, aircraft inbound in the hold toward Catfish Lake should return to the beginning of the hold at Catfish Lake and then proceed toward Great Lake and Long Lake.

From Long Lake, fly approximately a 150 degree heading toward Bogue Sound. Tune in and **MONITOR** Beaufort Advisory on 119.65 just prior to reaching Bogue Sound. At Bogue Sound, turn left and fly east down the middle of the sound to Fort Macon. **Begin descent to pattern altitude; 1,000 feet MSL.** Report on Beaufort Advisory 119.65 when over the Atlantic Beach Bridge; approximately 3 nautical miles from Fort Macon. Example: "Beaufort Advisory, Ercoupe 1234 over Atlantic Beach Bridge inbound with AWOS."

Proceed inbound toward Fort Macon and follow instructions from Beaufort Advisory. In the event that traffic volume requires holding, follow the holding procedure as depicted in the *Beach Hold* graphic. All

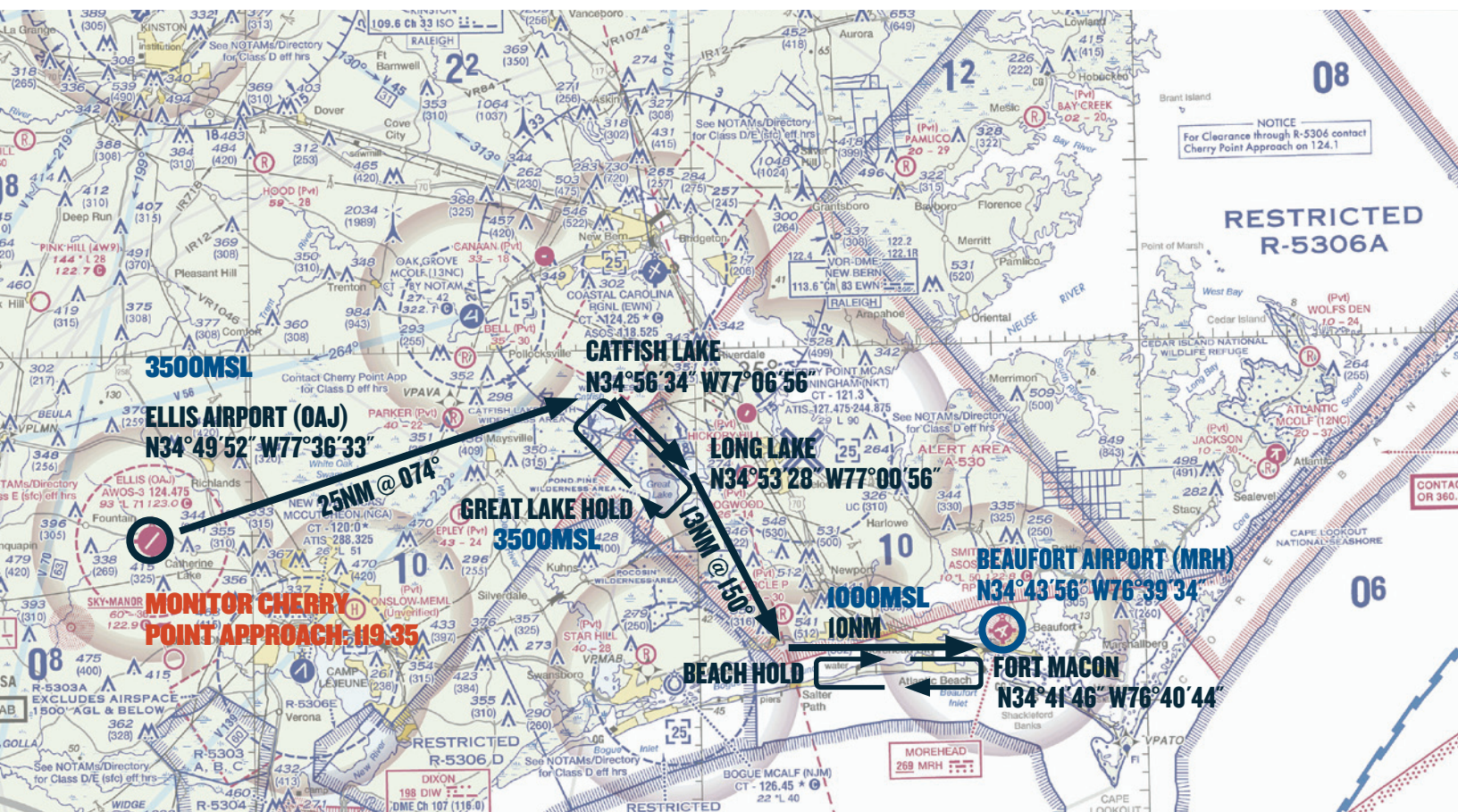
aircraft should fly right turns at 1,000 feet MSL. When holding is no longer required, aircraft outbound from Fort Macon should return to the beginning of the hold over the town of Salter Path and then proceed toward Fort Macon staying in the middle of Bogue Sound and reporting on Beaufort Advisory 119.65 when over Atlantic Beach Bridge.

Follow instructions from Beaufort Advisory on 119.65. Expect left traffic for runway 26 or right traffic for runway 8 depending on wind conditions.

After landing, exit the runway as quickly and as safely as possible. Do not stop on the runway unless absolutely necessary. Keep moving after exiting the runway so as not to block subsequent arrivals. Follow taxi instructions and directional signs to the designated parking areas. Marshalls will direct aircraft to parking.

VFR PROCEDURES

ARRIVALS OVER ALBERT J. ELLIS AIRPORT (OAJ)



AWOS: 135.375

CHERRY POINT APPROACH: 119.35

BEAUFORT ADVISORY: 119.65

MRH UNICOM: 122.8

CHECK BEAUFORT AWOS ON 135.375 AS SOON AS PRACTICAL.

This arrival procedure begins over Albert J Ellis Airport (OAJ) at 3,500 feet MSL. Pilots should tune in and **MONITOR ONLY** Cherry Point Approach on 119.35 after arriving over OAJ for information and updates on traffic conditions at Beaufort Airport (MRH).

Caution: Stay alert for converging traffic.

Proceed from OAJ to the northwest corner of Catfish Lake. (Approximate heading to Catfish Lake is 074 degrees.)

Caution: Stay alert for converging traffic.

Proceed from Catfish Lake toward Great Lake and Long Lake. In the event that traffic volume requires holding, follow the holding procedure as depicted in the *Great Lake Hold* graphic. All aircraft should fly right turns at 3,500 feet MSL. When holding is no longer required, aircraft inbound in the hold toward

Catfish Lake should return to the beginning of the hold at Catfish Lake and then proceed toward Great Lake and Long Lake.

From Long Lake, fly approximately a 150 degree heading toward Bogue Sound. Tune in and **MONITOR** Beaufort Advisory on 119.65 just prior to reaching Bogue Sound. At Bogue Sound, turn left and fly east down the middle of the sound to Fort Macon. **Begin descent to pattern altitude; 1,000 feet MSL.** Report on Beaufort Advisory 119.65 when over the Atlantic Beach Bridge; approximately 3 nautical miles from Fort Macon. Example: *"Beaufort Advisory, Ercoupe 1234 over Atlantic Beach Bridge inbound with AWOS."*

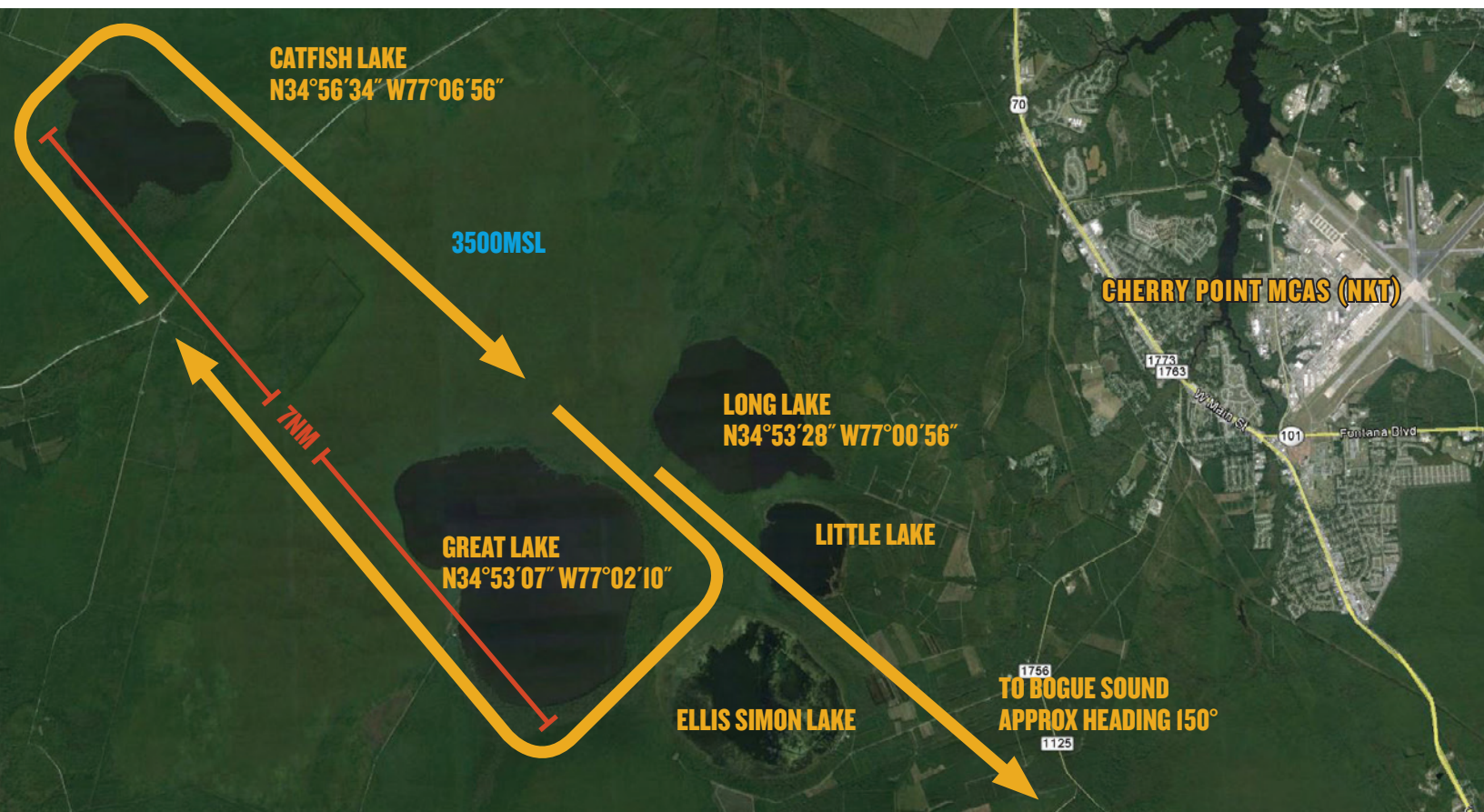
Proceed inbound toward Fort Macon and follow instructions from Beaufort Advisory. In the event that traffic volume requires holding, follow the holding procedure as depicted in the *Beach Hold* graphic. All aircraft should fly right turns at 1,000 feet MSL. When holding is no longer required,

aircraft outbound from Fort Macon should return to the beginning of the hold over the town of Salter Path and then proceed toward Fort Macon staying in the middle of Bogue Sound and reporting on Beaufort Advisory 119.65 when over Atlantic Beach Bridge.

Follow instructions from Beaufort Advisory on 119.65. Expect left traffic for runway 26 or right traffic for runway 8 depending on wind conditions.

After landing, exit the runway as quickly and as safely as possible. Do not stop on the runway unless absolutely necessary. Keep moving after exiting the runway so as not to block subsequent arrivals. Follow taxi instructions and directional signs to the designated parking areas. Marshalls will direct aircraft to parking.

GREAT LAKE HOLD



AWOS: 135.375

CHERRY POINT APPROACH: 119.35

BEAUFORT ADVISORY: 119.65

MRH UNICOM: 122.8

BEACH HOLD



AWOS: 135.375

CHERRY POINT APPROACH: 119.35

BEAUFORT ADVISORY: 119.65

MRH UNICOM: 122.8

VFR PROCEDURES

FORT MACON TO BEAUFORT AIRPORT (MRH)



AWOS: I35.375

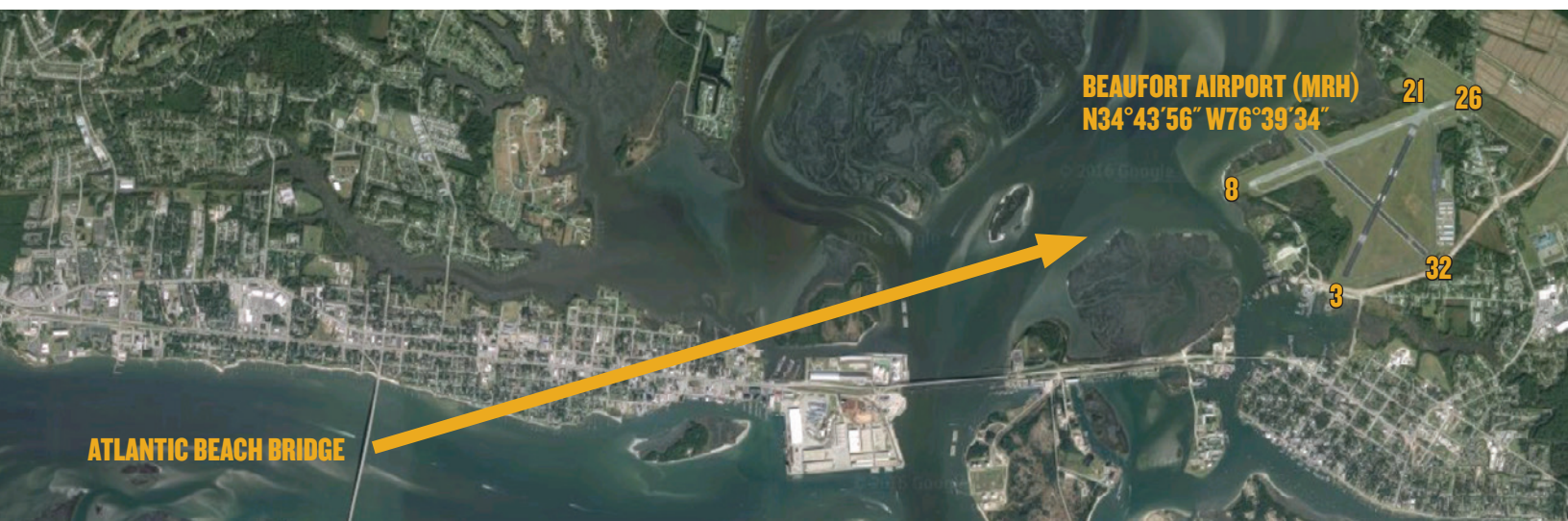
CHERRY POINT APPROACH: I19.35

BEAUFORT ADVISORY: I19.65

MRH UNICOM: I22.8

VFR PROCEDURES

ALTERNATE APPROACH TO BEAUFORT AIRPORT (MRH) RUNWAY 8 IN USE



AWOS: I35.375

CHERRY POINT APPROACH: I19.35

BEAUFORT ADVISORY: I19.65

MRH UNICOM: I22.8

IFR DELAYS

IFR arrivals will be integrated with VFR traffic. However IFR separation requirements may cause delays when arrival rates exceed airport capacity. Pilots on an IFR flight plan should be prepared for the potential holding at Beaufort Airport. IFR flight plans to Beaufort Airport should be filed **at least 2 hours** prior to proposed departure time.

LOCAL TRAINING AND PRACTICE APPROACHES

Local traffic pattern, closed traffic training, and practice instrument approaches **may not** be available at Beaufort Airport during the AOPA Fly-In.

CAUTIONS

Converging traffic at entry points and around Catfish Lake, Great Lake, and Long Lake.

Possible parachute operations around Washington-Warren Airport (OCW)

Class D Airspace at Kinston Regional Jetport (ISO); 2600

Class D Airspace at Coastal Carolina Regional Airport (EWN); 2500

Class D Airspace at Cherry Point MCAS (NKT); 2500

Class D Airspace at Oak Grove MCOLF (13NC); 1500

Class D Airspace at New River MCAS (NCA); 2500

Numerous Special Use Airspace in the vicinity of Beaufort Airport (MRH)

High density traffic during peak hours 3:00 PM-6:00 PM local on Friday, May 20, 2016 and 8:00 AM-11:00 AM local on Saturday, May 21, 2016 at Beaufort Airport (MRH).

Various charted National Park Services Areas, U.S. Fish and Wildlife Service Areas, and U.S. Forest Service Areas

RESTRICTED AREAS LIMITING OPERATIONS TO ACCOMMODATE BEAUFORT FLY-IN

Restricted areas R-5306A and R5306C will be limiting operations from 12:30PM local Friday, May 20, 2016 until 8:00AM local Monday, May 22, 2016



FREQUENCY & WAYPOINT INFORMATION

BEAUFORT AIRPORT FREQUENCIES

AWOS	135.375
AWOS Telephone Number	252-728-2055
Beaufort Advisory	119.65
Beaufort CTAF/UNICOM	122.8
Cherry Point Approach/Departure	119.35/132.575
IFR Clearance/VFR Flight Following	125.65

SPECIFIC LATITUDE/LONGITUDE COORDINATES

Washington-Warren Airport (OCW)	N35°34'21"/W77°02'57"
Kinston Regional Jetport (ISO)	N35°19'53"/W77° 36'30"
Albert J Ellis Airport (OAJ)	N34°49'52"/W77° 36'33"
Coastal Carolina Regional Airport (EWN)	N35°04'22"/W77°02'33"
Catfish Lake	N34°56'34"/W77°06'56"
Long Lake	N34°53'28"/W77°00'56"
Great Lake	N34°53'07"/W77°02'10"
Salter Path/Bogue Sound	N34°41'19"/W76°53'04"
Atlantic Beach Bridge	N34°43'00"/W76°44'07"
Oceana Fishing Pier	N34°41'41"/W76°43'37"
Fort Macon	N34°41'46"/W76°40'44"
Beaufort Airport (MRH)	N34°43'56"/W76°39'34"
US70 Bridge	N34°47'20"/W76°36'36"
Great Island	N34°55'47"/W76°44'33"
Fairfield Harbour	N35°04'17"/W76°57'37"

GENERAL INFORMATION

BEAUFORT AIRPORT



AWOS: 135.375

CHERRY POINT APPROACH: 119.35

BEAUFORT ADVISORY: 119.65

MRH UNICOM: 122.8

PARKING AREAS

- When operating in the parking areas, pilots are encouraged to be extra alert for taxiing aircraft, aircraft with engine(s) running, and vehicle/pedestrian traffic.
- Marshalls will be assisting aircraft to and from parking areas and run-up areas.
- For safety reasons, high RPM engine running is prohibited in designated parking areas. For departure, it is recommended that pilots conduct their run-up procedures in queue if practical.
- Please review the parking map prior to landing and departure.

VEHICULAR TRAFFIC

- Vehicles are not allowed on ramps except those belonging to airport operators and tenants, and exhibitors participating in the AOPA Beaufort Airport Fly-In.

PRE-FLIGHT PLANNING

- Please ensure that you have reviewed the special flight information, departure procedures, and temporary taxi procedures prior to engine start.
- High traffic density is expected Saturday morning and afternoon. Consider arriving during off-peak hours.

DEPARTURE PROCEDURES

BEAUFORT AIRPORT

IFR DEPARTURES

Follow marshallers' instructions to taxi to the nearest designated IFR departure holding area. IFR departures should obtain a clearance from Cherry Point on 125.65 when ready for departure. If unable to reach Cherry Point on 125.65 try 132.575. **Do not contact Cherry Point until you are ready to depart.**

VFR DEPARTURES

VFR Flight Following: Pilots wanting VFR flight-following should make the request to Cherry Point on 125.65 **PRIOR TO DEPARTURE**. State call sign, type aircraft, destination, and final altitude.

Prior to Start-up: Please ensure that you have reviewed the special flight information, departure procedures, and temporary taxi procedures prior to engine start. Check AWOS on 135.375.

Engine Start: Locate a marshaller to monitor engine start.

Taxi: Follow instructions from marshallers to taxi for departure runway.

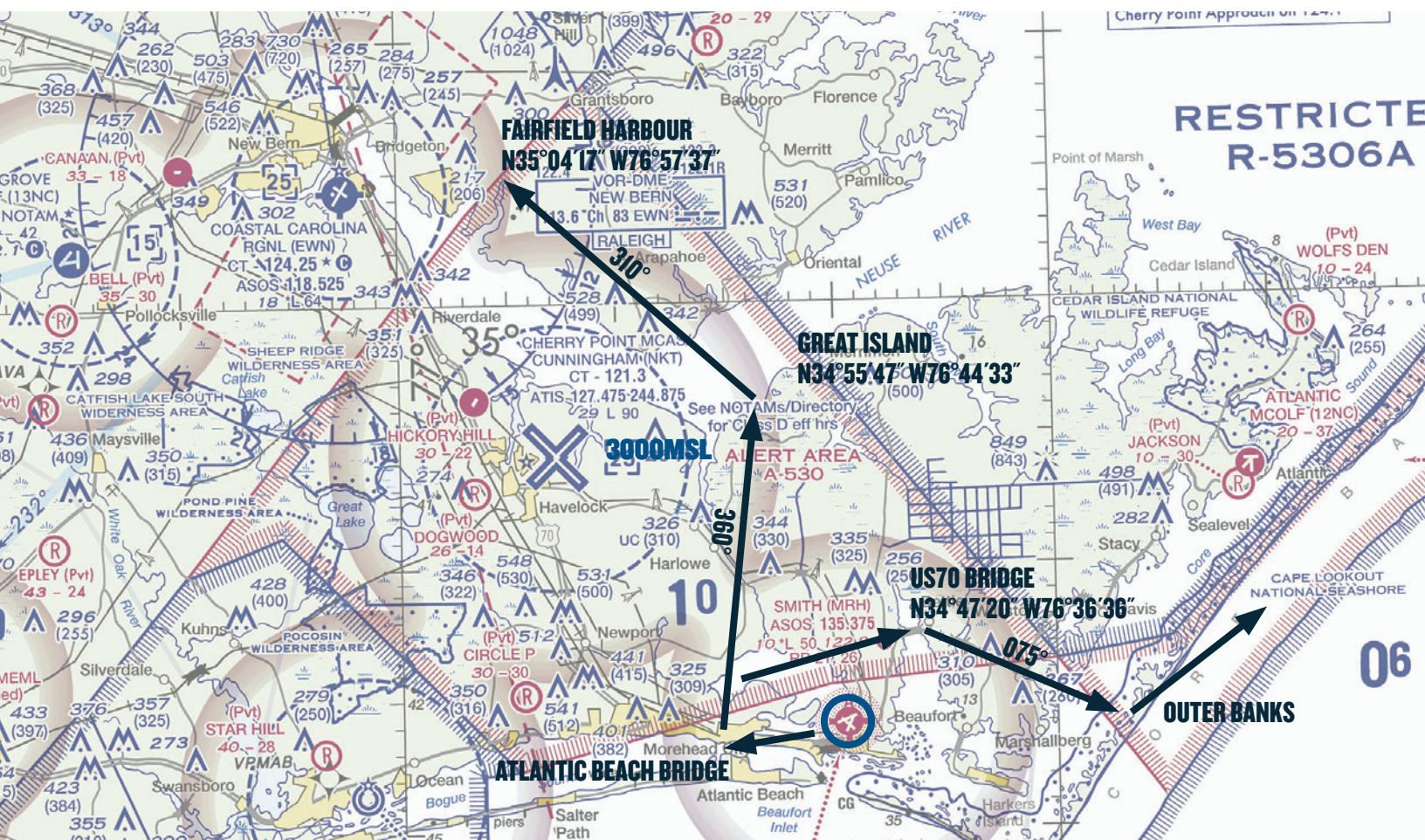
Run-up: If practical, it is recommended that you conduct your run-up while in queue for departure. Please consider propeller blast during your run-up.

MONITOR Beaufort Advisory on 119.65 during taxi and be prepared for immediate departure when number one.

Departure: See graphics on following pages.

DEPARTURE PROCEDURES

RUNWAY 26 IN USE



AWOS: 135.375

CHERRY POINT: 132.575

BEAUFORT ADVISORY: 119.65

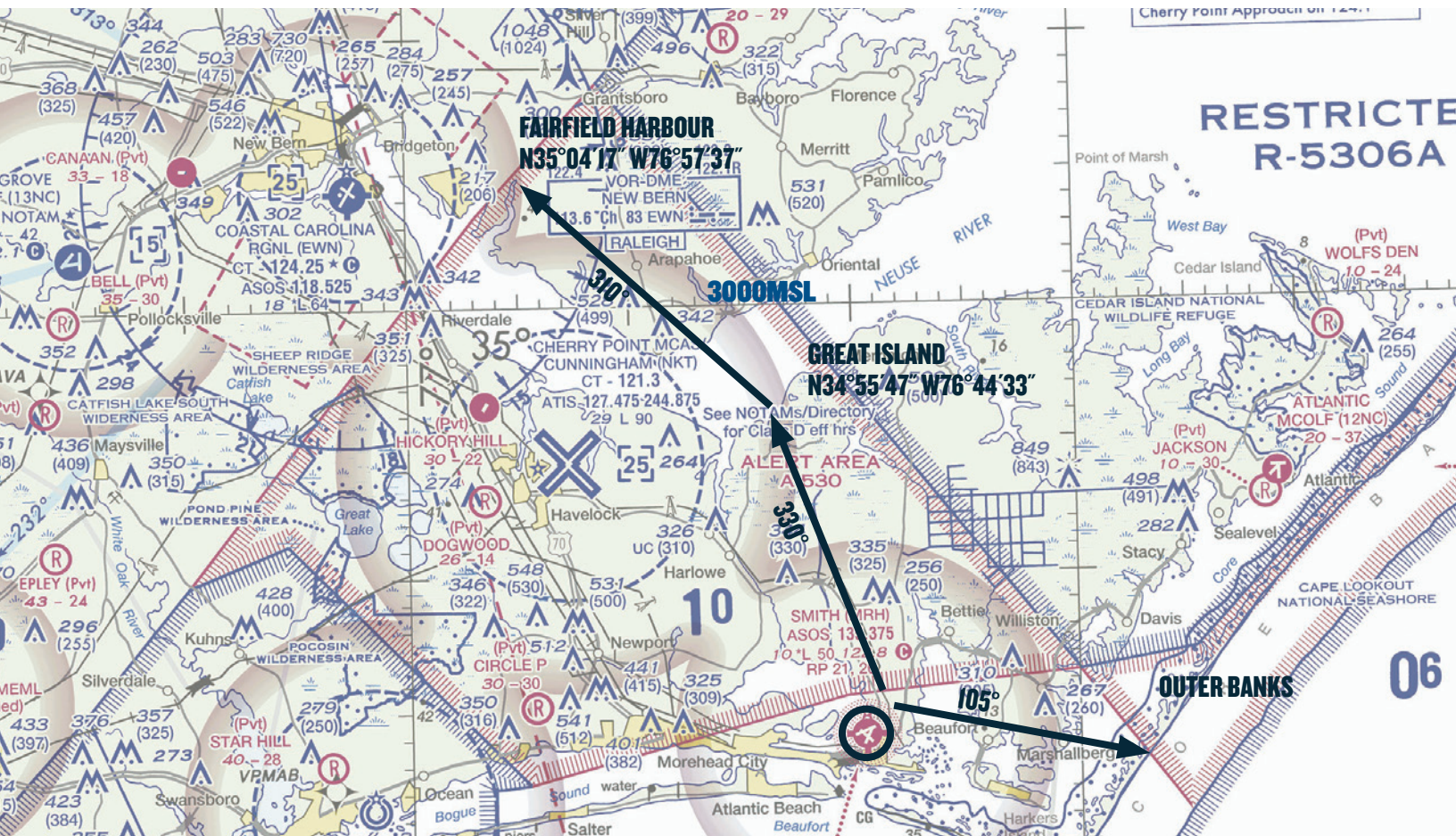
MRH UNICOM: 122.8

After departure, fly to the Atlantic Beach Bridge and then turn right direct to Great Island. (Approximate heading 360°) Climb to 3,000 feet MSL if practical. If receiving Flight Following, contact Cherry Point Approach on 132.575; otherwise **MONITOR** only. At Great Island, turn left and fly direct toward the community of Fairfield Harbour. (Approximate heading 310°). Turn on course after passing Fairfield Harbour.

If departing for the Outer Banks, fly to the Atlantic Beach Bridge and then turn right and fly north to the Newport River. After reaching the Newport River turn right and fly direct to the US 70 bridge. (Approximate heading 075°) At the US 70 bridge, turn right and fly direct to the Cape Lookout National Seashore. (Approximate heading 105°) Minimum 2,000 feet MSL suggested. If receiving Flight Following, contact Cherry Point Approach on 132.575 as soon as practical after departing MRH.

DEPARTURE PROCEDURES

RUNWAY 08 IN USE



AWOS: 135.375

CHERRY POINT: 132.575

BEAUFORT ADVISORY: 119.65

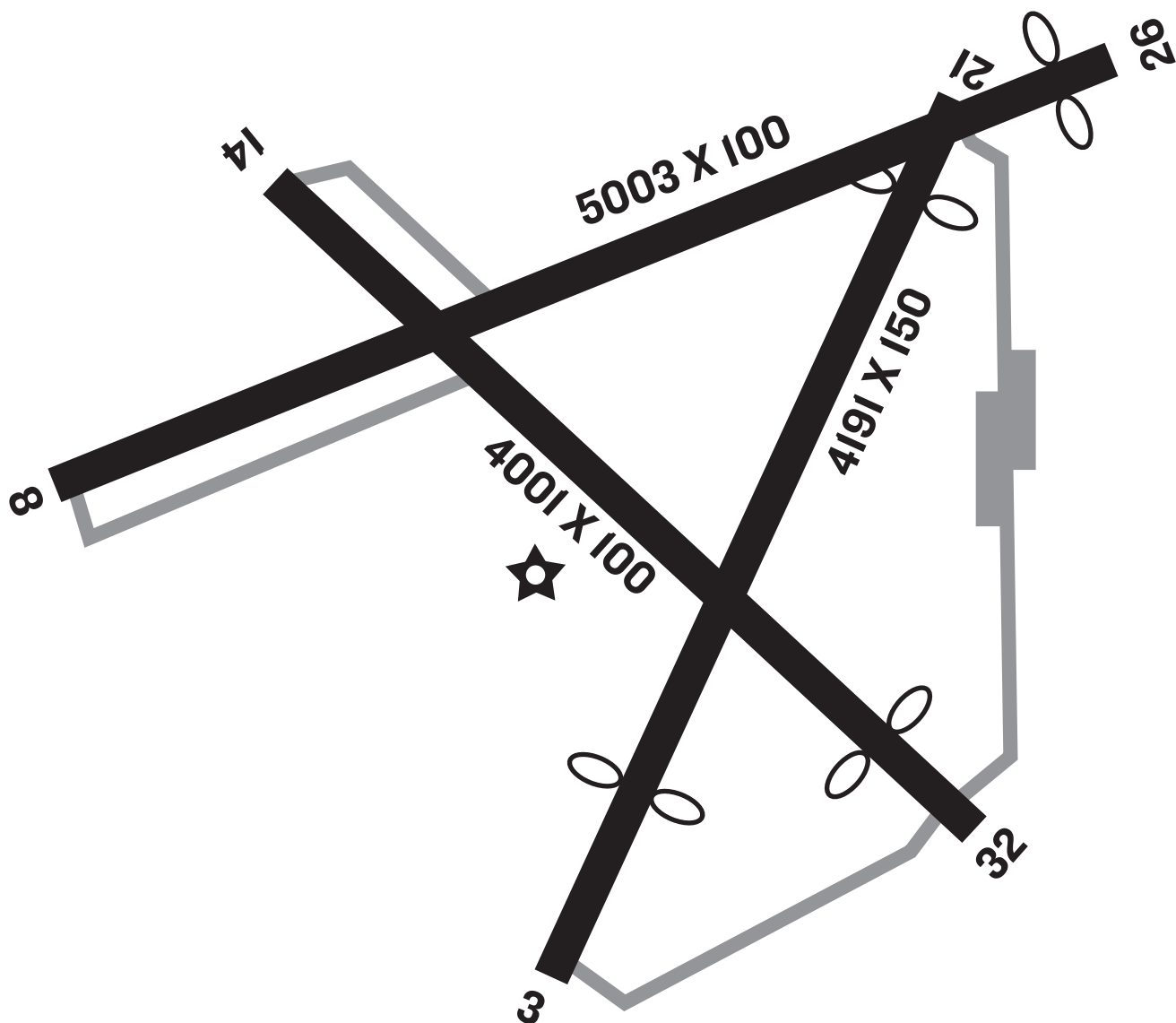
MRH UNICOM: 122.8

After departure, turn left direct to Great Island. (Approximate heading 330°) Climb to 3,000 feet MSL if practical. If receiving Flight Following, contact Cherry Point Approach on 132.575 otherwise **MONITOR** only. At Great Island, turn left and fly direct toward the community of Fairfield Harbour. (Approximate heading 310°) Turn on course after passing Fairfield Harbour.

If departing for the Outer Banks, when practical turn right after departure and fly direct to the Cape Lookout National Seashore. (Approximate heading 105°) Minimum 2,000 feet MSL suggested. If receiving Flight Following, contact Cherry Point Approach on 132.575 as soon as practical after departing MRH.

AIRPORT DIAGRAM

BEAUFORT AIRPORT (MRH)



ELEVATION: 10FT (3.0 M)

AWOS: 135.375

CHERRY POINT APPROACH: 119.35

BEAUFORT ADVISORY: 119.65

MRH UNICOM: 122.8