

AOPA FLY-IN

W K KELLOGG AIRPORT (KBTL)

PILOT INFORMATION PACKET

SEPT 16-17 | BATTLE CREEK, MI



SPECIAL FLIGHT PROCEDURES EFFECTIVE

12:00 Noon EDT until 6:00PM EDT Friday, September 16 and
7:00AM EDT until 6:00PM EDT Saturday, September 17, 2016



TABLE OF CONTENTS

BATTLE CREEK PILOT INFORMATION PACKET

KNEEBOARD QUICK REFERENCE GRAPHICS **01-03**

Arrivals over Coldwater/Branch County Memorial Airport and Union Lake Hold.....	01
Arrivals over Gun Lake and Gun Lake Hold.....	02
Arrivals over Charlotte/Fitch H Beach Airport (FPK).....	03

NOTAM—TEMPORARY VFR PROCEDURES **04-13**

VFR Arrivals Overview.....	04
VFR Procedures: Arrivals over Coldwater/Branch County Memorial Airport (OEB).....	05
VFR Holding Pattern: Union Lake Hold.....	06
VFR Procedures: Arrivals over Gun Lake.....	07
VFR Holding Pattern: Gun Lake Hold.....	08
VFR Procedures: Arrivals over Charlotte/Fitch H Beach Airport (FPK).....	09
VFR Holding Pattern: I-69 Hold.....	10
VFR Holding Pattern: I-69 Hold—Looking Southwest.....	11
IFR Arrivals.....	12
Temporary Battle Creek Airport Closure for Aerobatic Demonstration.....	12
Local Training and Practice Approaches.....	12
Cautions.....	12
Enroute Frequency Overview.....	12
Battle Creek Airport (BTL) Frequencies.....	12
Waypoint Information.....	13

GENERAL INFORMATION **14**

Parking Areas.....	14
Vehicular Traffic.....	14
Preflight Planning.....	14

DEPARTURE PROCEDURES **15-18**

IFR Departures.....	15
VFR Departures.....	15
- VFR Flight Following.....	15
- Prior to Start-up.....	15
- Engine Start.....	15
- Taxi.....	15
- Run-up.....	15
- Departure.....	15
- Departing Runway 5L or 23R—Graphic.....	16
- Departing Runway 5R or 23L—Graphic.....	16

FLIGHT FOLLOWING FREQUENCIES—GRAPHIC 17

W K KELLOGG (BATTLE CREEK) AIRPORT—DIAGRAM..... 18

ADDITIONAL INFORMATION 19-21

No Aircraft Radio 19

Student Pilots 19

Host FBO Information 19

Parking and Service Details 19

Chocks and Tie Downs 20

After-hours Departure 20

Camping 20

Rental Car Availability 20

Other Area Airports 20

- Branch County Memorial Airport (OEB) 20
- Fitch H Beach Airport (FPK) 20
- Brooks Field Airport (RMY) 20
- Hastings Airport (9D) 21
- Kalamazoo/Battle Creek International Airport (AZO) 21
- Three Rivers Municipal Dr Haines Airport (HAI) 21
- Padgham Field Airport (35D) 21

No Low-Transition Departures 21

ADDITIONAL GRAPHICS 22-24

Landing Runway 23L—BTL 22

Landing Runway 23R—BTL 22

Landing Runway 5R—BTL 23

Landing Runway 5L—BTL 23

Show Center—BTL 24

Branch County Memorial Airport (OEB)—Satellite View with Frequencies 24

Fitch H Beach Airport (FPK)—Satellite View with Frequencies 25

Brooks Field Airport (RMY)—Satellite View with Frequencies 25

Hastings Airport (9D9)—Satellite View with Frequencies 26

Three Rivers Municipal Dr Haines Airport (HAI)—Satellite View with Frequencies 26

Kalamazoo/Battle Creek International Airport (AZO)—Satellite View with Frequencies 27

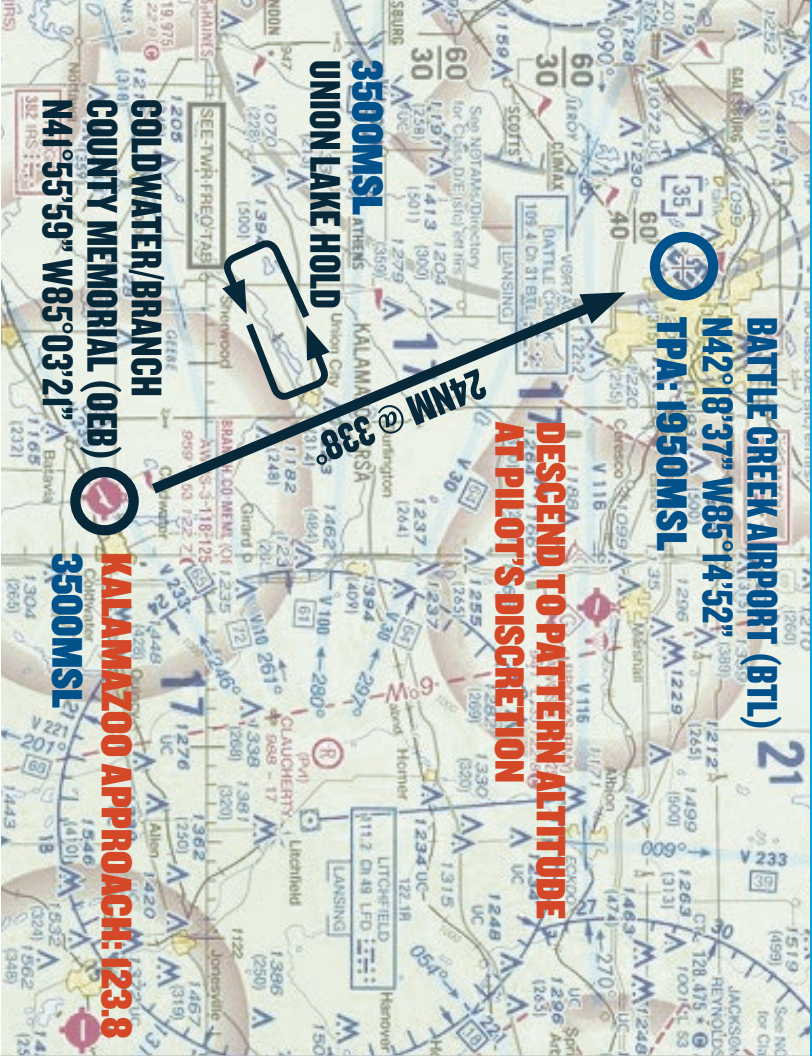
Padgham Field Airport (35D)—Satellite View with Frequencies 27

PRINTABLE AOPA WINDSHIELD GRAPHIC 28

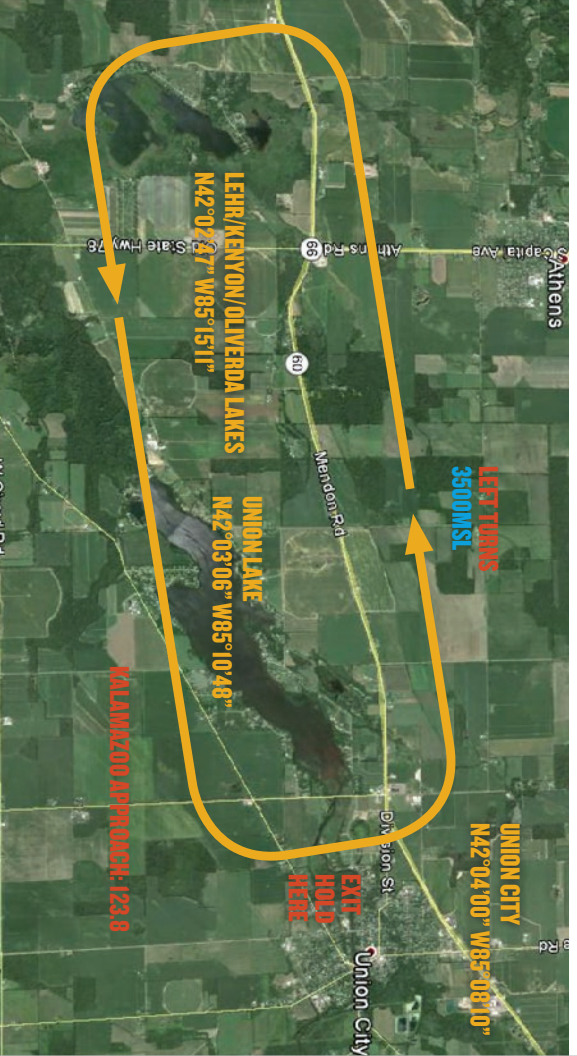
VFR PROCEDURES

ARRIVALS OVER COLDWATER/BRANCH COUNTY MEMORIAL AIRPORT (OEB)

ATTIS: 128.325 BTL TOWER (23R/5L): 126.825 (23L/5R): 133.325 BTL GROUND: 121.7



UNION LAKE HOLD



VFR PROCEDURES

ARRIVALS OVER COLDWATER/BRANCH COUNTY MEMORIAL AIRPORT (OEB)

ATTIS: 128.325 BTL TOWER (23R/5L): 126.825 (23L/5R): 133.325 BTL GROUND: 121.7

CHECK ATTIS ON 128.325.

Procedure begins over Branch County Memorial Airport (OEB), referred to as Coldwater, at 3500 feet MSL. All aircraft should contact Kalamazoo Approach on 123.8 prior to reaching Coldwater.

Stay alert for other aircraft converging at Coldwater.

From Coldwater, proceed inbound toward Battle Creek Airport (BTL): 338°/24 NM. Do not proceed beyond the Union Lake Hold unless in contact with and instructed to do so by Kalamazoo Approach.

If instructions to continue inbound have not been received or traffic volume requires holding, follow the holding procedure as depicted in the Union Lake Hold graphic: left turns/3500 feet MSL.

Stay alert for other aircraft holding or converging over Union City.

When holding is no longer required, aircraft should complete the hold and return over the town of Union City and continue inbound. Begin descent to traffic pattern altitude at pilot's discretion.

Traffic Pattern Altitude: 1950 MSL

Expect radar services to be terminated approximately 10 NM from Battle Creek Airport (BTL) and to be instructed to contact Battle Creek Tower on 133.325. Expect a midfield entry for runway 23L or runway 5R.

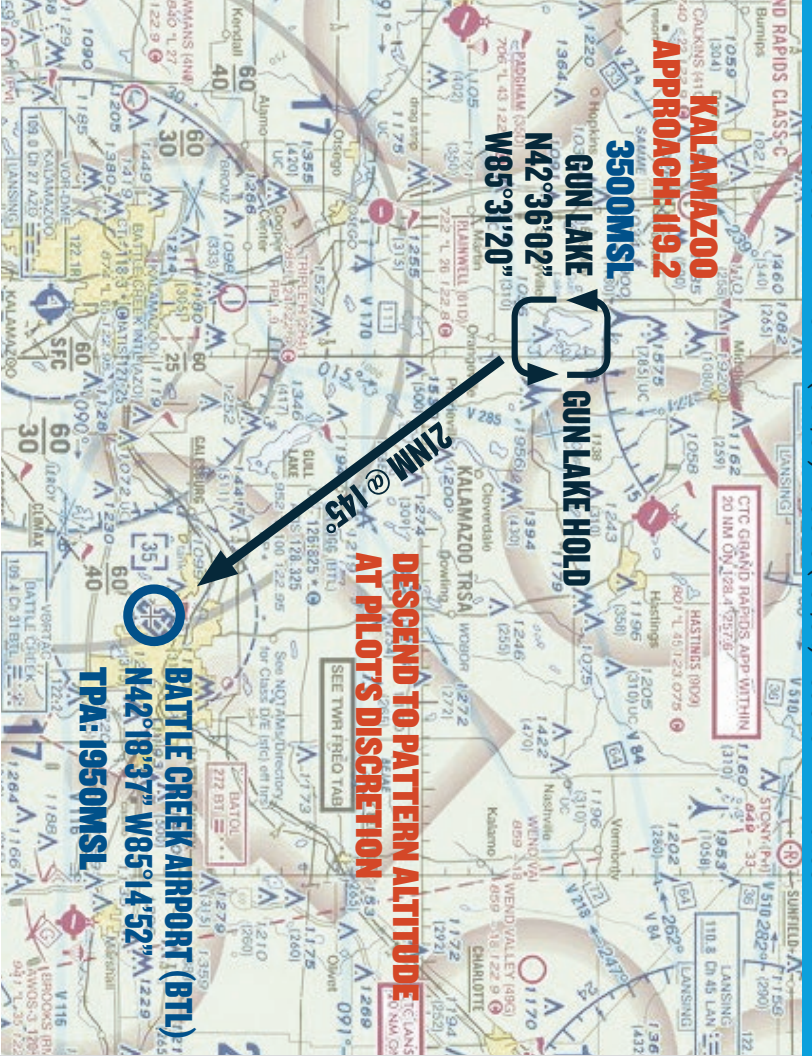
After landing, exit the runway as quickly and as safely as possible. Do not stop on the runway unless absolutely necessary. Keep moving after exiting the runway so as not to block subsequent arrivals. Follow taxi instructions and directional signs to the designated parking areas. Marshalls will direct aircraft to parking.



VFR PROCEDURES

ARRIVALS OVER GUN LAKE

ATIS: 128.325 BTL TOWER (23R/5L): 126.825 (23L/5R): 133.325 BTL GROUND: 121.7



GUN LAKE HOLD



VFR PROCEDURES

ARRIVALS OVER GUN LAKE

ATIS: 128.325 BTL TOWER (23R/5L): 126.825 (23L/5R): 133.325 BTL GROUND: 121.7

CHECK ATIS ON 128.325.

Procedure begins over Gun Lake at 3500 feet MSL. All aircraft should contact Kalamazoo Approach on **119.2** prior to reaching Gun Lake. Do not proceed inbound toward Battle Creek Airport (BTL) unless instructed to do so by Kalamazoo Approach. (To BTL, 145° / 21 NM)

Stay alert for other aircraft converging over Gun Lake.

If instructions to continue inbound have not been received or traffic volume requires holding, follow the holding procedure as depicted in the *Gun Lake Hold graphic*; left turns/3500 feet MSL.

Stay alert for other aircraft in the Gun Lake Hold.

When holding is no longer required, aircraft should complete the hold and continue

inbound. Begin descent to traffic pattern altitude at pilot's discretion.

Traffic Pattern Altitude: 1950 MSL

Expect radar services to be terminated approximately 10 NM from Battle Creek Airport (BTL) and to be instructed to contact Battle Creek Tower on **126.825**. Expect a midfield downwind entry for runway 23R or runway 5L.

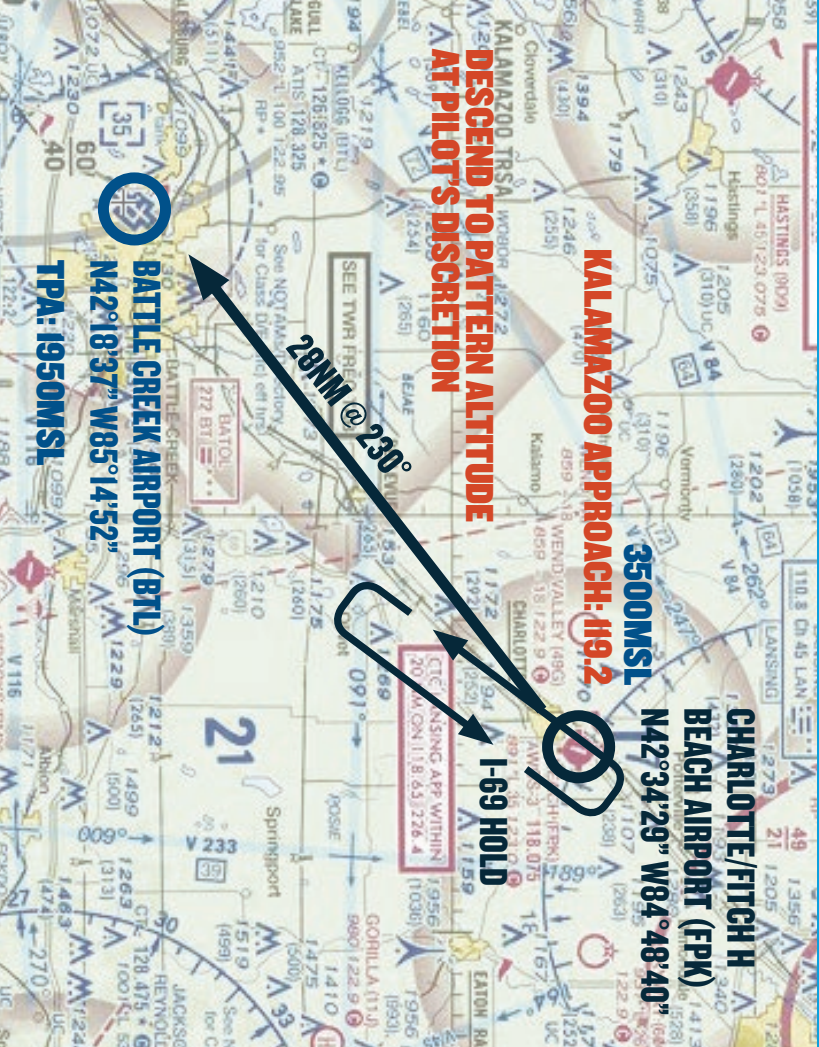
After landing, exit the runway as quickly and as safely as possible. Do not stop on the runway unless absolutely necessary. Keep moving after exiting the runway so as not to block subsequent arrivals. Follow taxi instructions and directional signs to the designated parking areas. Marshalls will direct aircraft to parking.



VFR PROCEDURES

ARRIVALS OVER CHARLOTTE/FITCH H BEACH AIRPORT (FPK)

ATIS: 128.325 BTL TOWER (23R/5L): 126.825 (23L/5R): 133.325 BTL GROUND: 121.7



DESCEND TO PATTERN ALTITUDE AT PILOT'S DISCRETION

KALAMAZOO APPROACH: 19.2

3500MSL

CHARLOTTE/FITCH H BEACH AIRPORT (FPK)

N42°34'29\" W84°48'40\"

I-69 HOLD

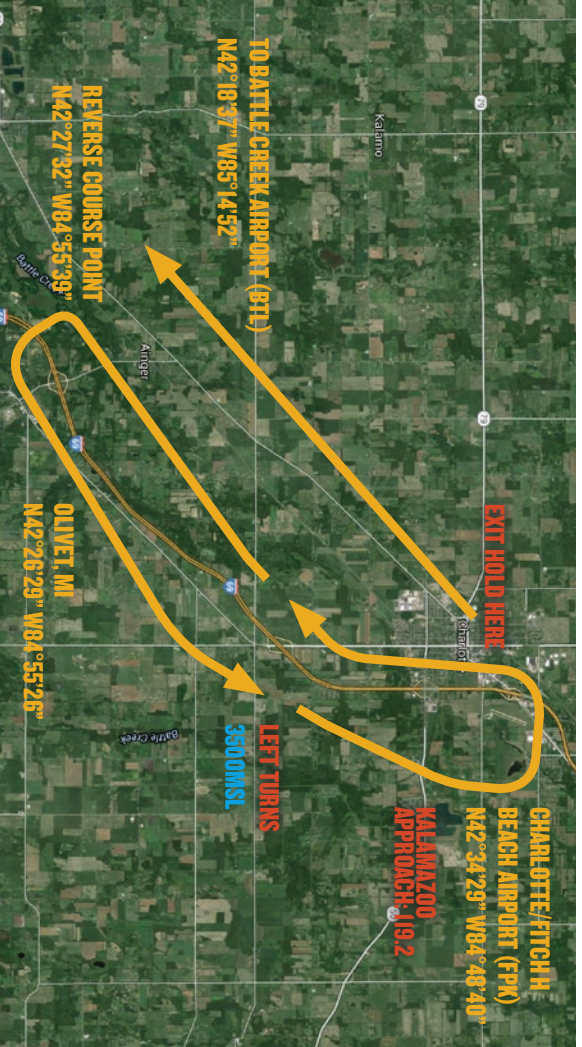
28NM @ 230°

BATTLE CREEK AIRPORT (BTL)

N42°18'37\" W85°14'52\"

TPA: 1950MSL

I-69 HOLD



EXT HOLD HERE

CHARLOTTE/FITCH H BEACH AIRPORT (FPK)

N42°34'29\" W84°48'40\"

KALAMAZOO APPROACH: 19.2

LEFT TURNS

3500MSL

TO BATTLE CREEK AIRPORT (BTI)

N42°18'37\" W85°14'52\"

REVERSE COURSE POINT

N42°27'32\" W84°55'39\"

OLIVET, MN

N42°26'29\" W84°55'26\"

VFR PROCEDURES

ARRIVALS OVER CHARLOTTE/FITCH H BEACH AIRPORT (FPK)

ATIS: 128.325 BTL TOWER (23R/5L): 126.825 (23L/5R): 133.325 BTL GROUND: 121.7

CHECK ATIS ON 128.325.

Procedure begins over Fitch H Beach Airport (FPK), referred to as Charlotte, at 3500 feet MSL. All aircraft should contact Kalamazoo Approach on **119.2** prior to reaching Charlotte. Do not proceed inbound toward Battle Creek Airport (BTL) until instructed to do so by Kalamazoo Approach. (To BTL: 230° / 28 NM)

Stay alert for other aircraft converging at Charlotte.

Caution: Class C Airspace 6 NM northeast beginning at 2100 feet MSL.

If instructions to continue inbound have not been received or traffic volume requires holding, follow the holding procedure as depicted in the *I-69 Hold graphic*: left turns/3500 feet MSL.

Stay alert for other aircraft in the hold or converging over Charlotte.

When holding is no longer required, aircraft should complete the hold and return over Charlotte and continue inbound. Begin descent to traffic pattern altitude at pilot's discretion.

Traffic Pattern Altitude: 1950 MSL

Expect radar services to be terminated approximately 10 NM from Battle Creek Airport (BTL) and to be instructed to contact Battle Creek Tower on **126.825**. Expect a straight in approach for runway 23R or a left downwind entry for runway 5L.

After landing, exit the runway as quickly and as safely as possible. Do not stop on the runway unless absolutely necessary. Keep moving after exiting the runway so as not to block subsequent arrivals. Follow taxi instructions and directional signs to the designated parking areas. Marshalls will direct aircraft to parking.



AIRCRAFT PARKING

AIRCRAFT CAMPING

SHOW CENTER

13

132

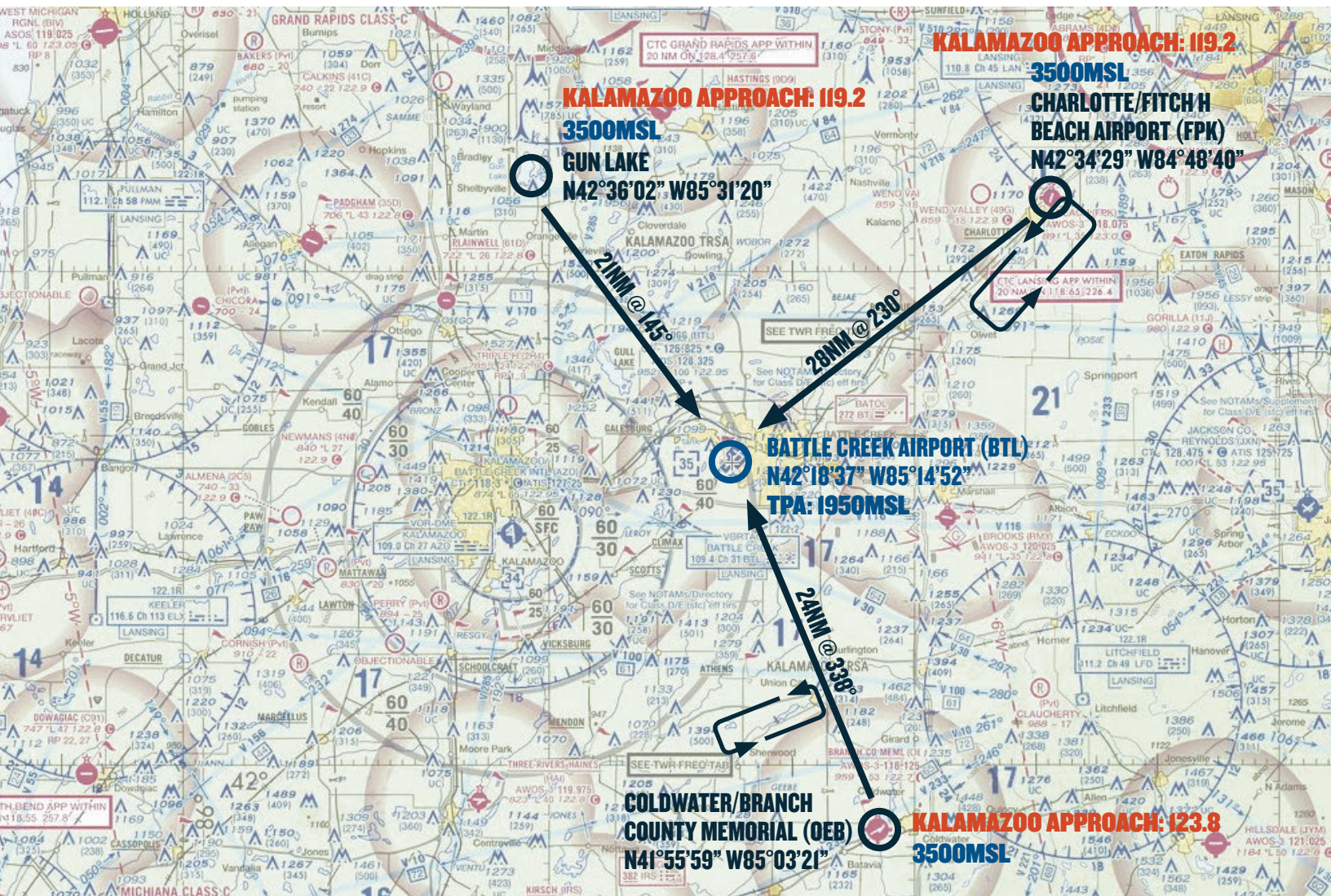
132

13

5R

5L

VFR ARRIVALS OVERVIEW



ATIS: 128.325 BTL TOWER (23R/5L): 126.825 (23L/5R): 133.325 BTL GROUND: 121.7

TEMPORARY VFR PROCEDURES

Specific procedures contained within this NOTAM may be revised at the time of the event. Pilots are urged to review all applicable NOTAMs and arrival/departure procedures prior to conducting a flight to Battle Creek Airport (BTL). Users are encouraged to check NOTAMs frequently to verify they possess the most current revisions. This NOTAM does not supersede restrictions pertaining to the use of airspace contained in FDC NOTAMs.

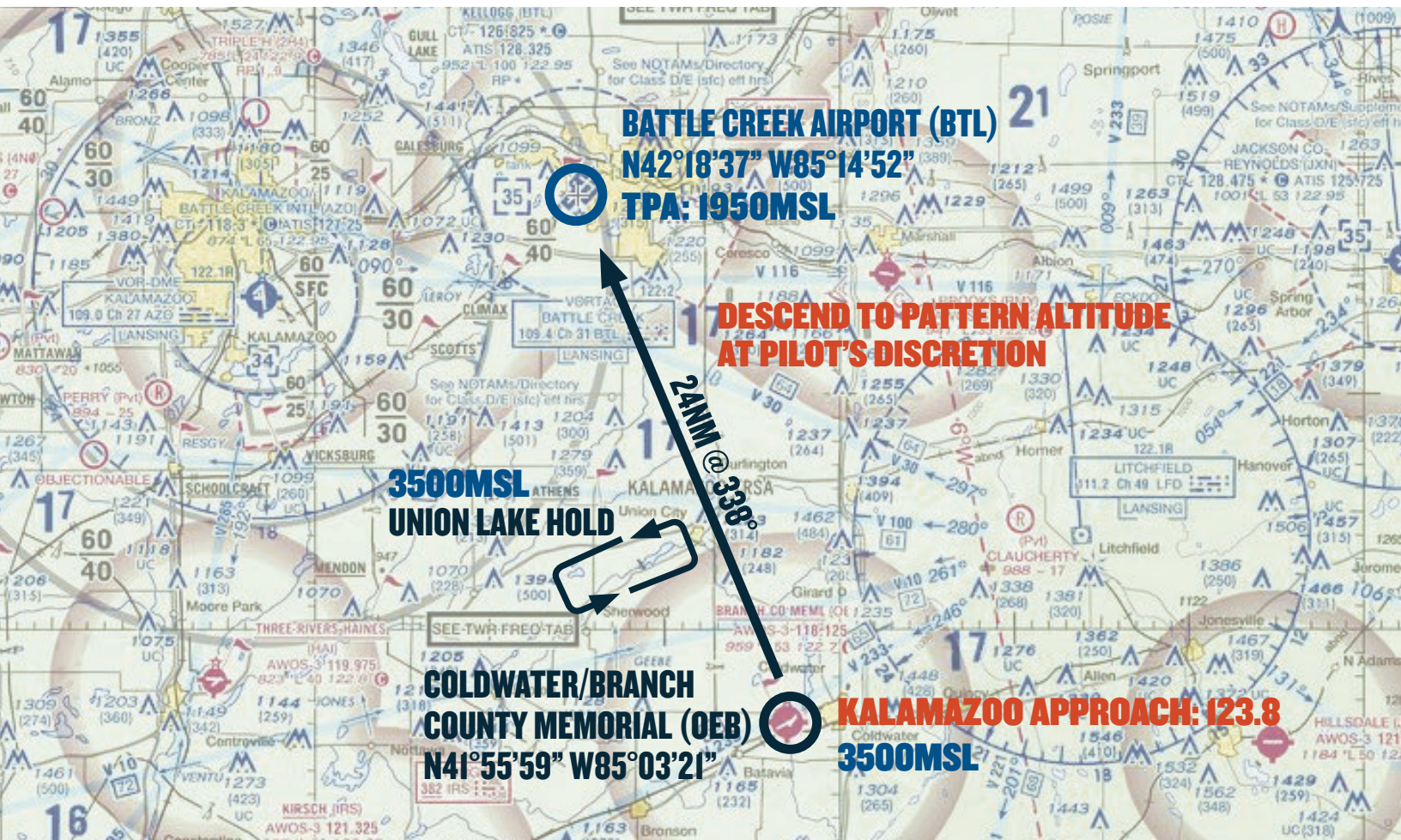
VFR ARRIVALS

All VFR arrivals must begin over:

1. Branch County Memorial Airport (OEB) (referred to as Coldwater), 24 nautical miles southeast of Battle Creek Airport (BTL),
2. Gun Lake, 21 nautical miles northwest of Battle Creek Airport (BTL), or
3. Fitch H Beach Airport (FPK) (referred to as Charlotte), 25 nautical miles northeast of Battle Creek Airport (BTL).

VFR PROCEDURES

ARRIVALS OVER COLDWATER/BRANCH COUNTY MEMORIAL AIRPORT (OEB)



ATIS: 128.325 BTL TOWER (23R/5L): 126.825 (23L/5R): 133.325 BTL GROUND: 121.7

CHECK BATTLE CREEK ATIS ON 128.325 AS SOON AS PRACTICAL.

This procedure begins over Branch County Memorial Airport (OEB), referred to as **Coldwater**, at 3500 feet MSL. All aircraft should contact Kalamazoo Approach on **123.8** prior to reaching Coldwater.

Stay alert for other aircraft converging at Coldwater.

From Coldwater, proceed inbound toward Battle Creek Airport (BTL); 24 nautical miles on an approximate heading of 338°. Do not proceed beyond the *Union Lake Hold* unless in contact with and instructed to do so by Kalamazoo Approach on **123.8**.

If instructions to continue inbound have not been received or traffic volume requires holding, follow the holding procedure as depicted in the *Union Lake Hold graphic*. All aircraft should fly left turns at 3500 feet MSL.

Stay alert for other aircraft in the Union Lake Hold or converging over the town of Union City.

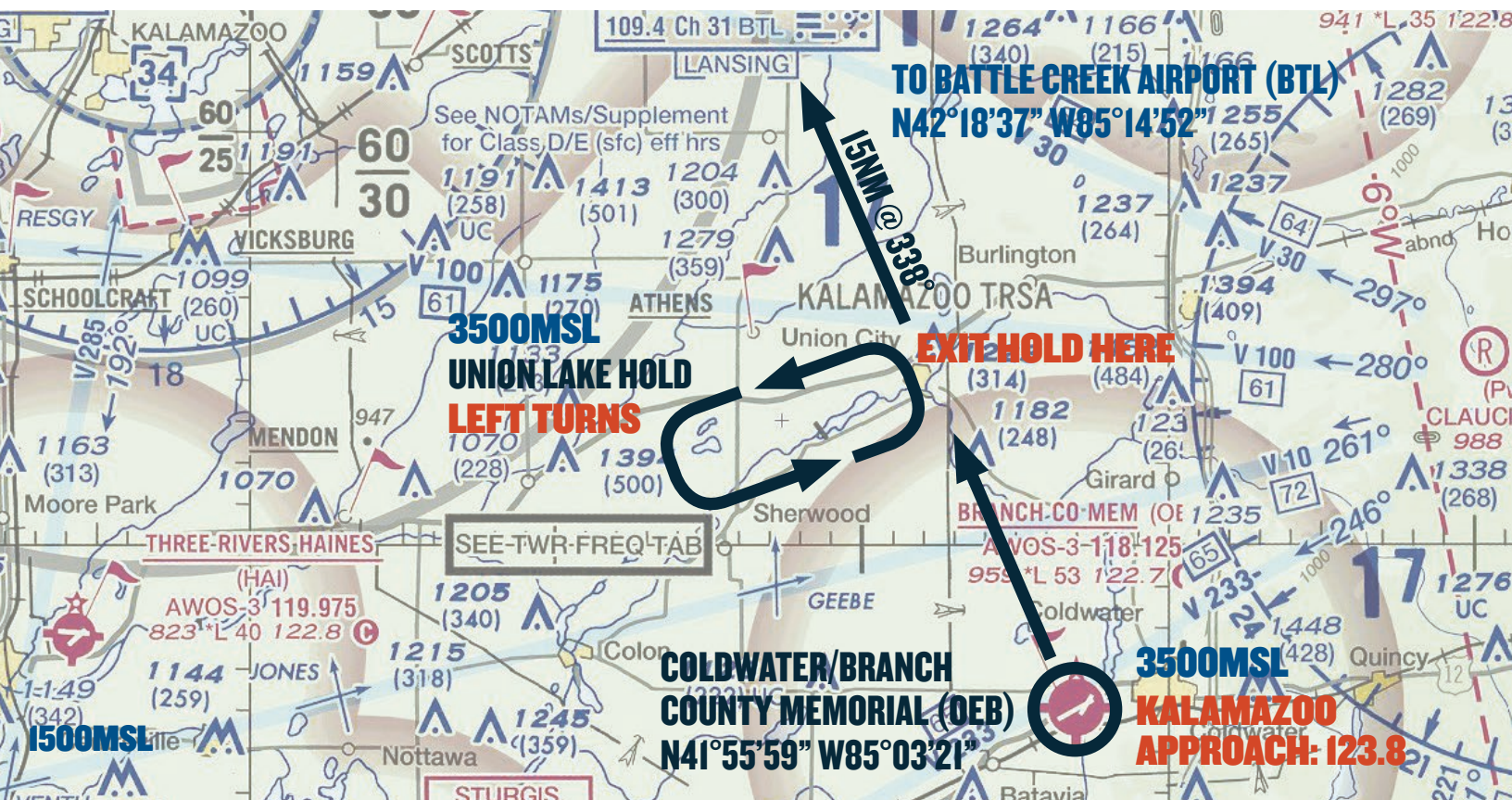
When holding is no longer required, aircraft should complete the hold and return over the town of Union City and continue inbound. Begin descent to traffic pattern altitude at pilot's discretion once inbound toward Battle Creek Airport (BTL).

Traffic Pattern Altitude: 1950 MSL

Expect radar services to be terminated approximately 10 nautical miles from Battle Creek Airport (BTL) and to be instructed to contact Battle Creek Tower on **133.325**. Depending on wind conditions, expect a midfield left downwind entry for runway 23L or a midfield right downwind entry for runway 5R.

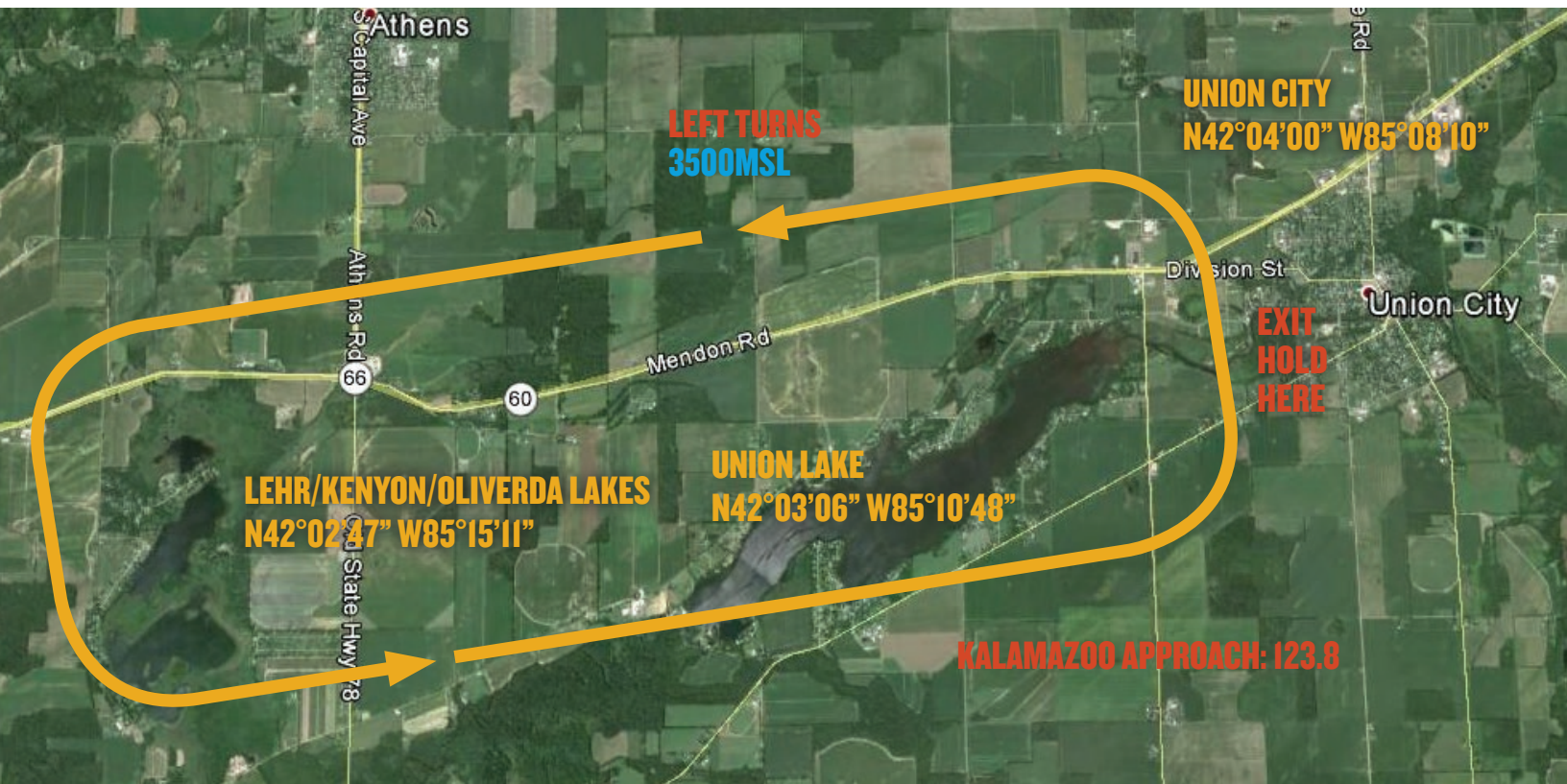
After landing, exit the runway as quickly and as safely as possible. Do not stop on the runway unless absolutely necessary. Keep moving after exiting the runway so as not to block subsequent arrivals. Follow taxi instructions and directional signs to the designated parking areas. Marshalls will direct aircraft to parking.

UNION LAKE HOLD



ATIS: 128.325 BTL TOWER (23R/5L): 126.825 (23L/5R): 133.325 BTL GROUND: 121.7

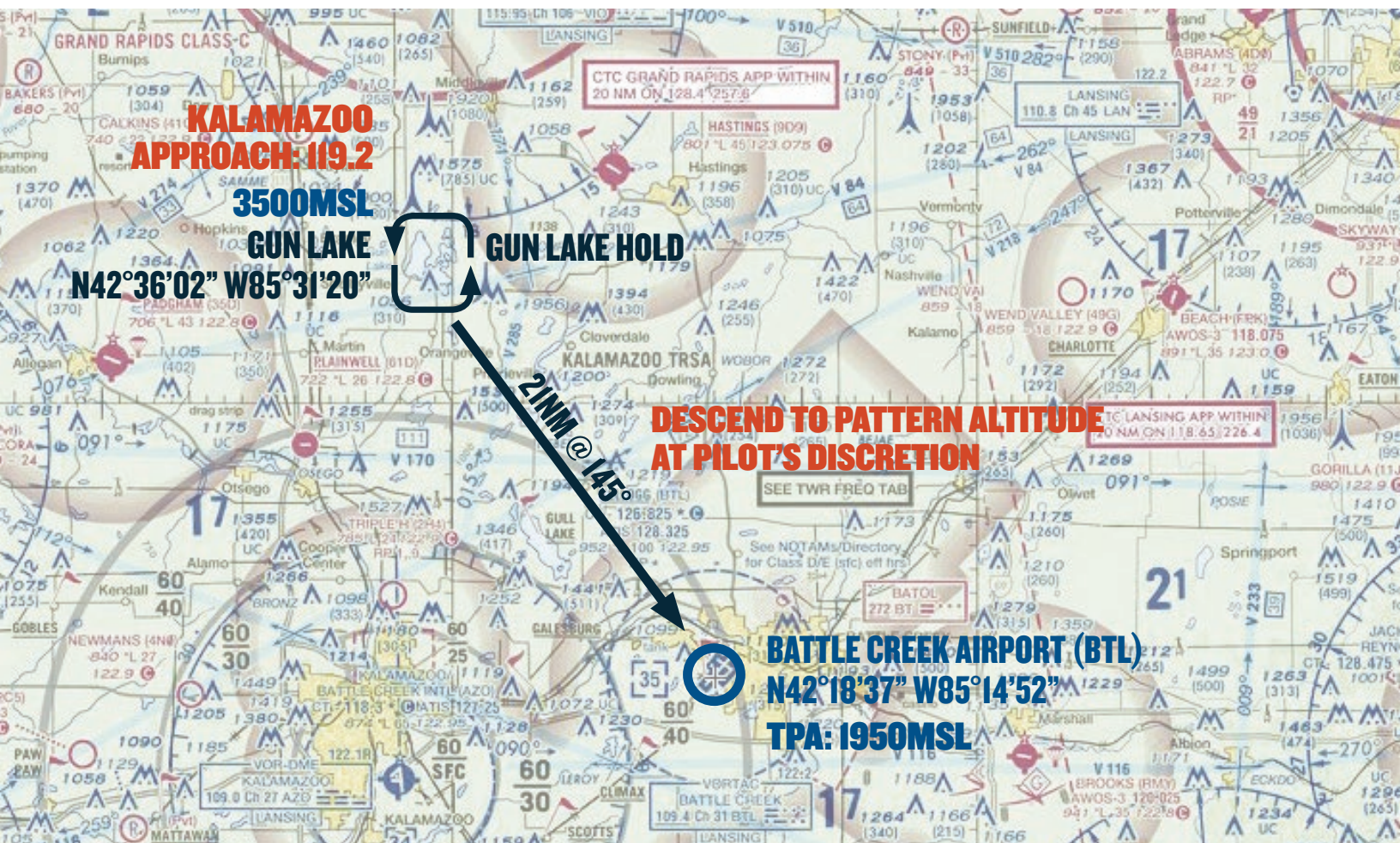
UNION LAKE HOLD



ATIS: 128.325 BTL TOWER (23R/5L): 126.825 (23L/5R): 133.325 BTL GROUND: 121.7

VFR PROCEDURES

ARRIVALS OVER GUN LAKE



ATIS: 128.325 BTL TOWER (23R/5L): 126.825 (23L/5R): 133.325 BTL GROUND: 121.7

CHECK BATTLE CREEK ATIS ON 128.325 AS SOON AS PRACTICAL

This procedure begins over Gun Lake at 3500 feet MSL. All aircraft should contact Kalamazoo Approach on **119.2** prior to reaching Gun Lake. Do not proceed inbound toward Battle Creek Airport (BTL) unless instructed to do so by Kalamazoo Approach. (To BTL; 145° / 21 NM)

Stay alert for other aircraft converging over Gun Lake.

If instructions to continue inbound have not been received or traffic volume requires holding, follow the holding procedure as depicted in the *Gun Lake Hold graphic*. All aircraft should fly left turns at 3500 feet MSL.

Stay alert for other aircraft in the Gun Lake Hold.

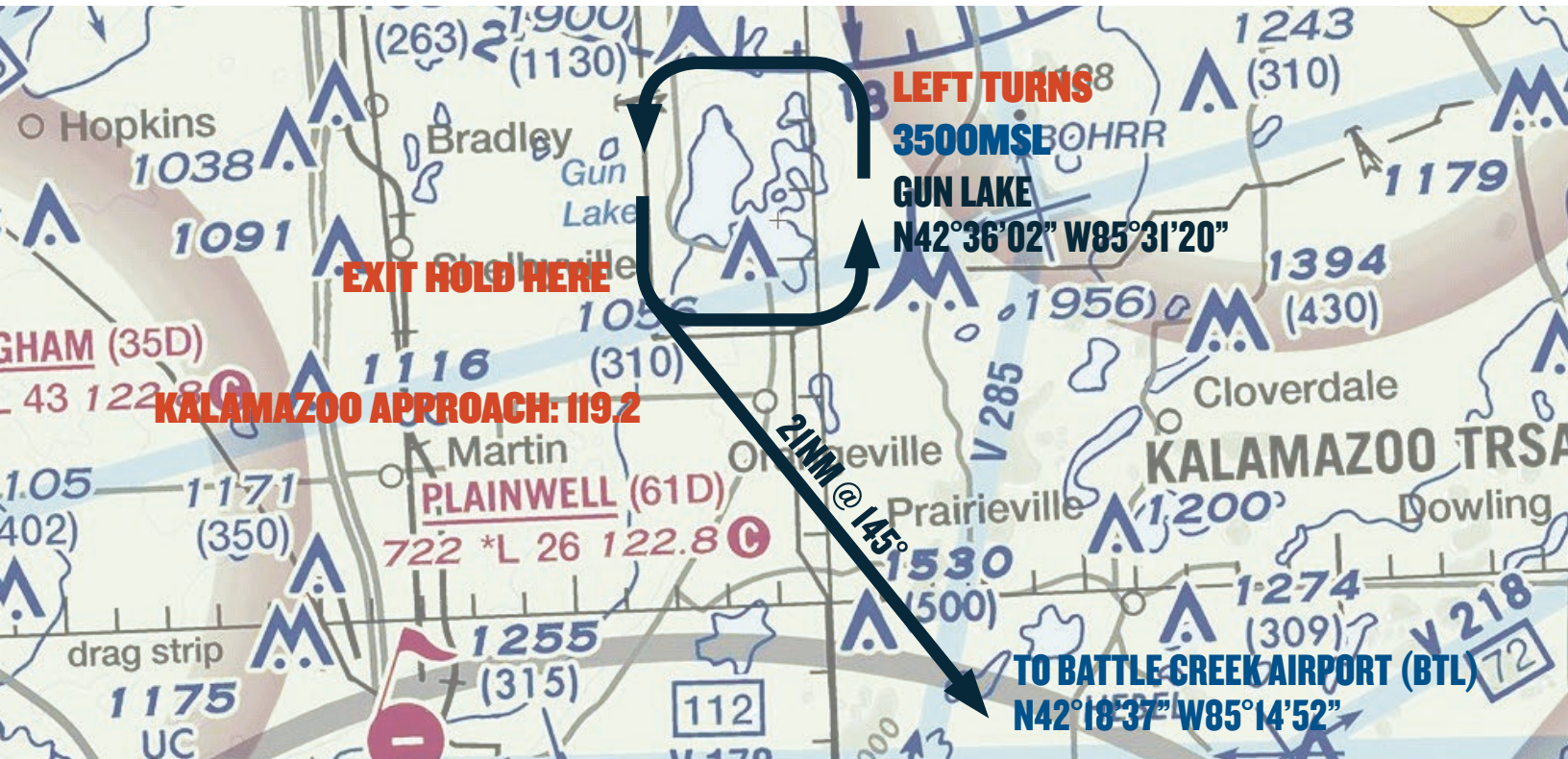
When holding is no longer required, aircraft should complete the hold and continue inbound. Begin descent to traffic pattern altitude at pilot's discretion once inbound toward Battle Creek Airport (BTL).

Traffic Pattern Altitude: 1950 MSL

Expect radar services to be terminated approximately 10 nautical miles from Battle Creek Airport (BTL) and to be instructed to contact Battle Creek Tower on **126.825**. Depending on wind conditions, expect a midfield right downwind entry for runway 23R or a midfield left downwind entry for runway 5L.

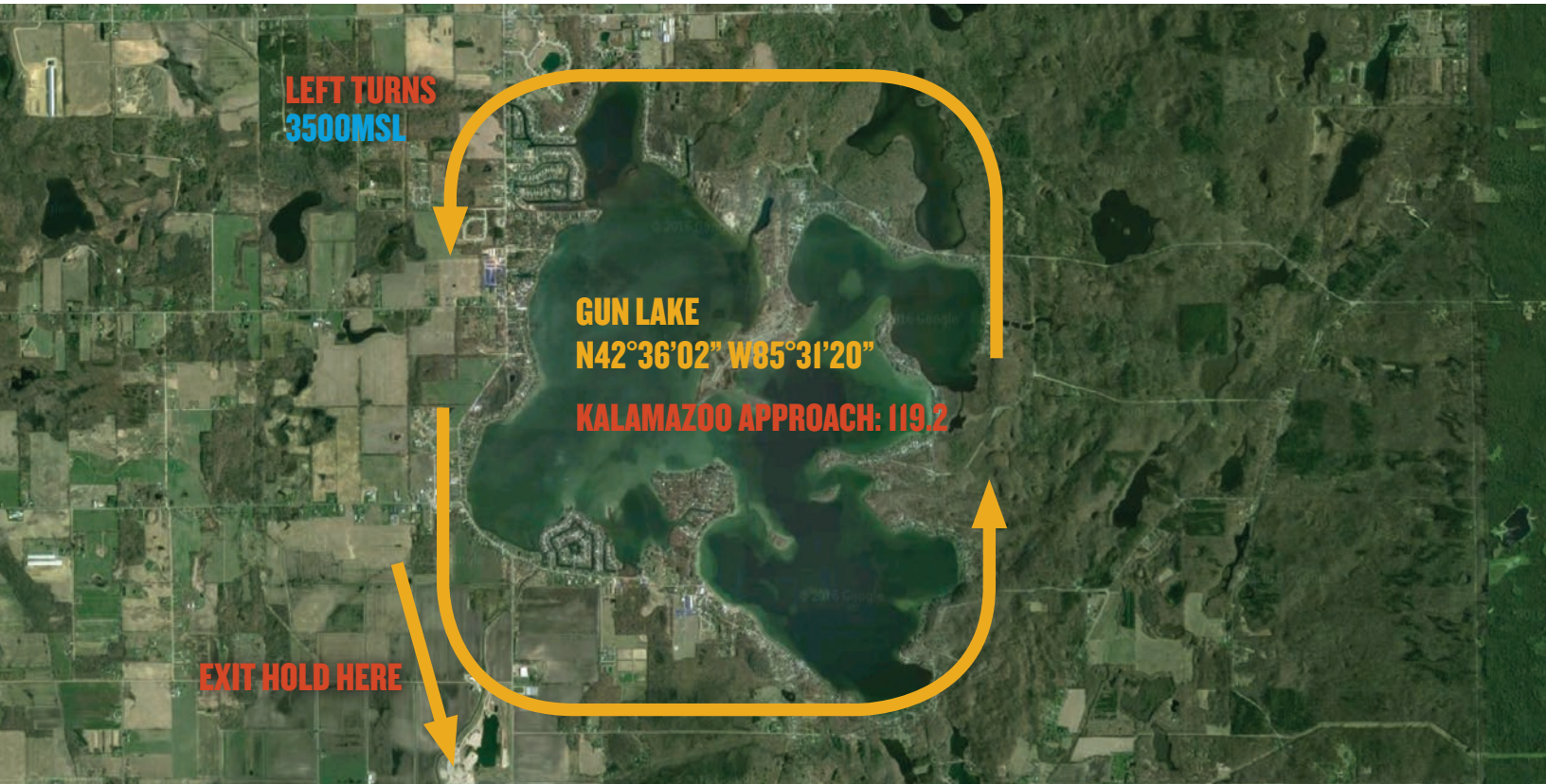
After landing, exit the runway as quickly and as safely as possible. Do not stop on the runway unless absolutely necessary. Keep moving after exiting the runway so as not to block subsequent arrivals. Follow taxi instructions and directional signs to the designated parking areas. Marshallsers will direct aircraft to parking.

GUN LAKE HOLD



ATIS: 128.325 BTL TOWER (23R/5L): 126.825 (23L/5R): 133.325 BTL GROUND: 121.7

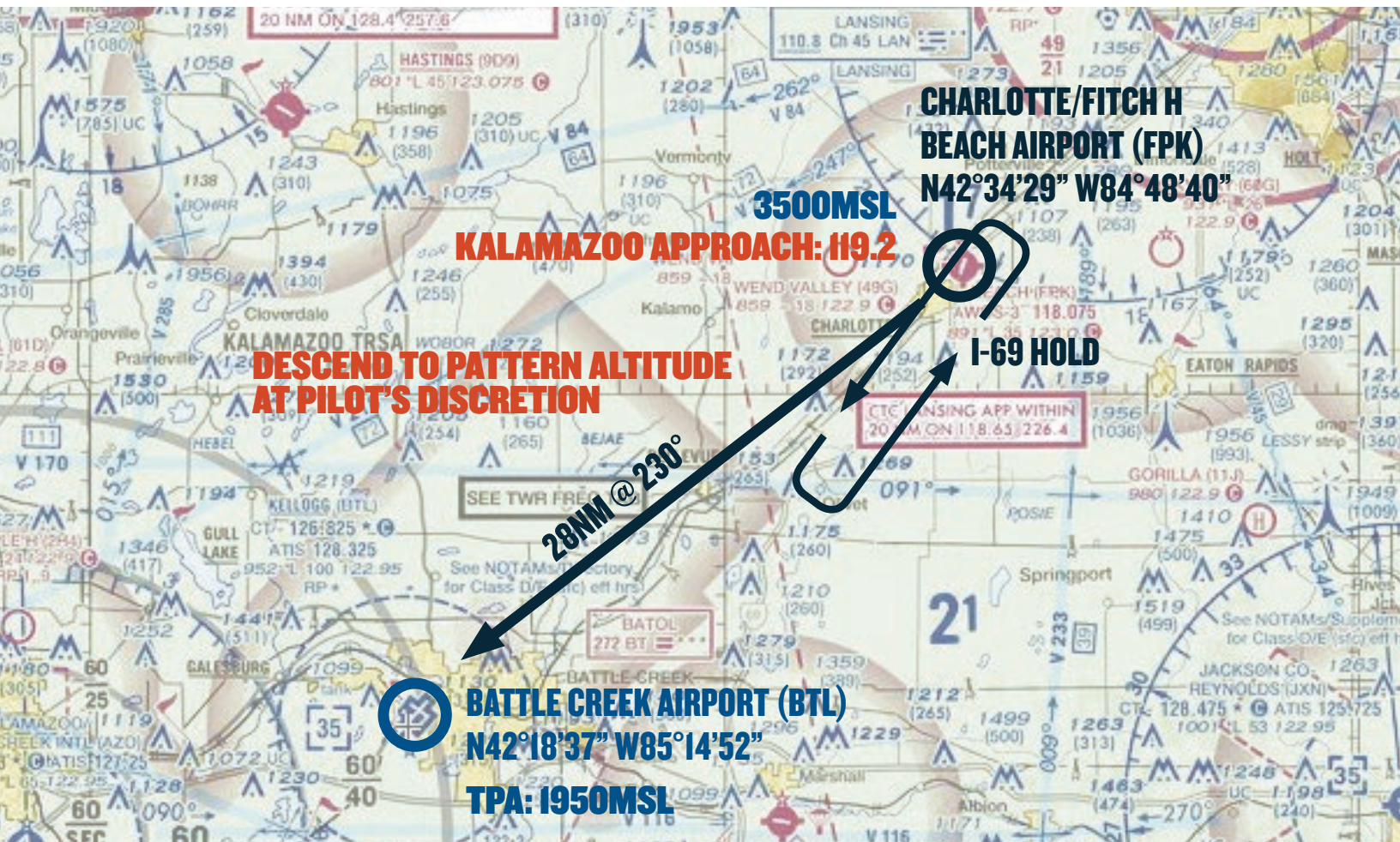
GUN LAKE HOLD



ATIS: 128.325 BTL TOWER (23R/5L): 126.825 (23L/5R): 133.325 BTL GROUND: 121.7

VFR PROCEDURES

ARRIVALS OVER CHARLOTTE/FITCH H BEACH AIRPORT (FPK)



ATIS: 128.325 BTL TOWER (23R/5L): 126.825 (23L/5R): 133.325 BTL GROUND: 121.7

CHECK BATTLE CREEK ATIS ON 128.325 AS SOON AS PRACTICAL.

This procedure begins over Fitch H Beach Airport (FPK), referred to as **Charlotte**, at 3500 feet MSL. All aircraft should contact Kalamazoo Approach on **119.2** prior to reaching Charlotte. Do not proceed inbound toward Battle Creek Airport (BTL) until instructed to do so by Kalamazoo Approach. (To BTL; 230° / 28 NM)

Stay alert for other aircraft converging at Charlotte.

Caution: Class C Airspace 6 NM northeast beginning at 2100 feet MSL.

If instructions to continue inbound have not been received or traffic volume requires holding, follow the holding procedure as depicted in the *I-69 Hold graphic*. All aircraft should fly left turns at 3,500 feet MSL.

Stay alert for other aircraft in the Interstate 69 Hold or converging over Charlotte.

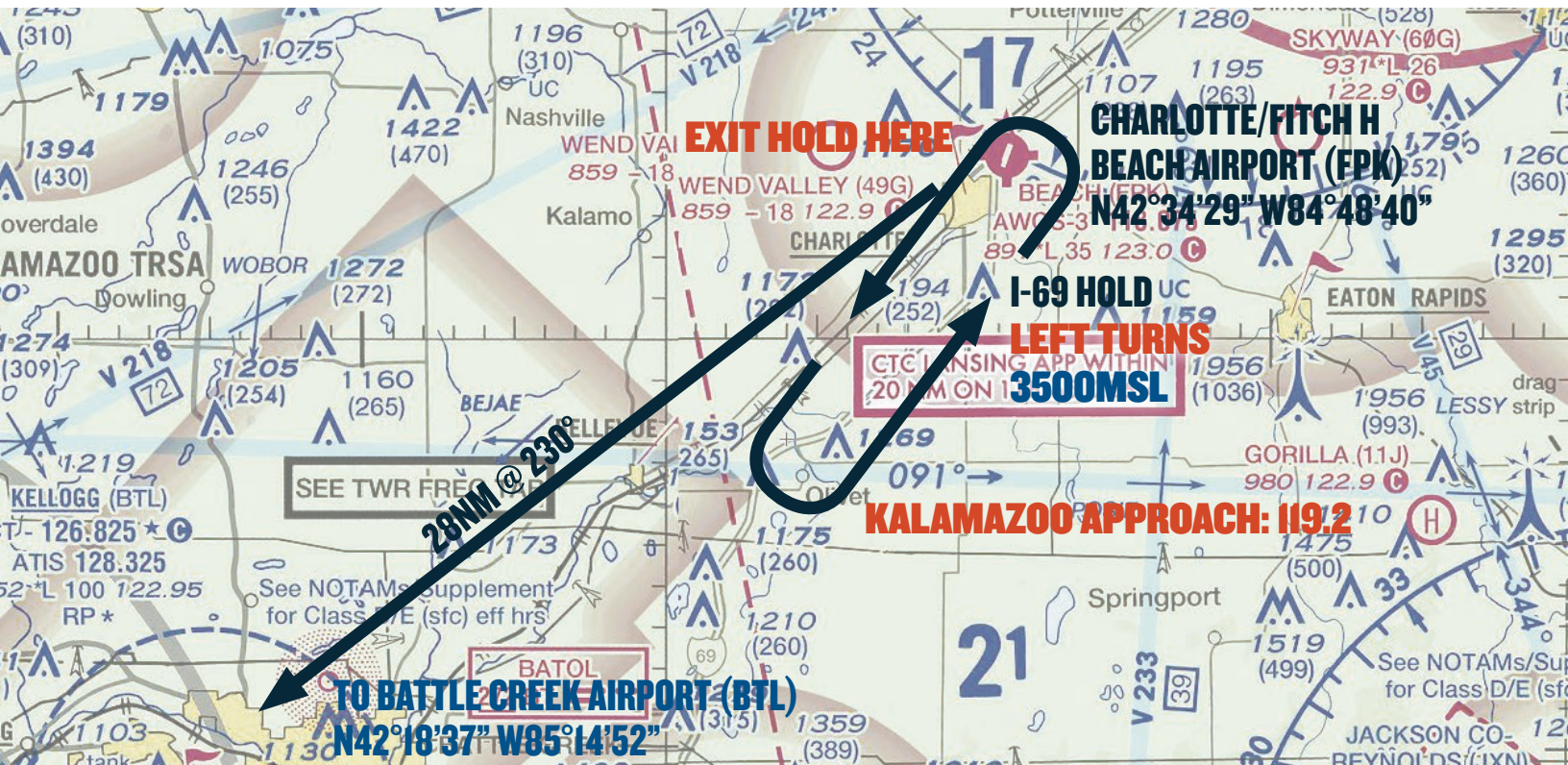
When holding is no longer required, aircraft should complete the hold and return over Charlotte and continue inbound. Begin descent to traffic pattern altitude at pilot's discretion once inbound toward Battle Creek Airport (BTL).

Traffic Pattern Altitude: 1950 MSL

Expect radar services to be terminated approximately 10 nautical miles from Battle Creek Airport (BTL) and to be instructed to contact Battle Creek Tower on **126.825**. Depending on wind conditions, expect a straight in approach for runway 23R or a left downwind entry for runway 5L.

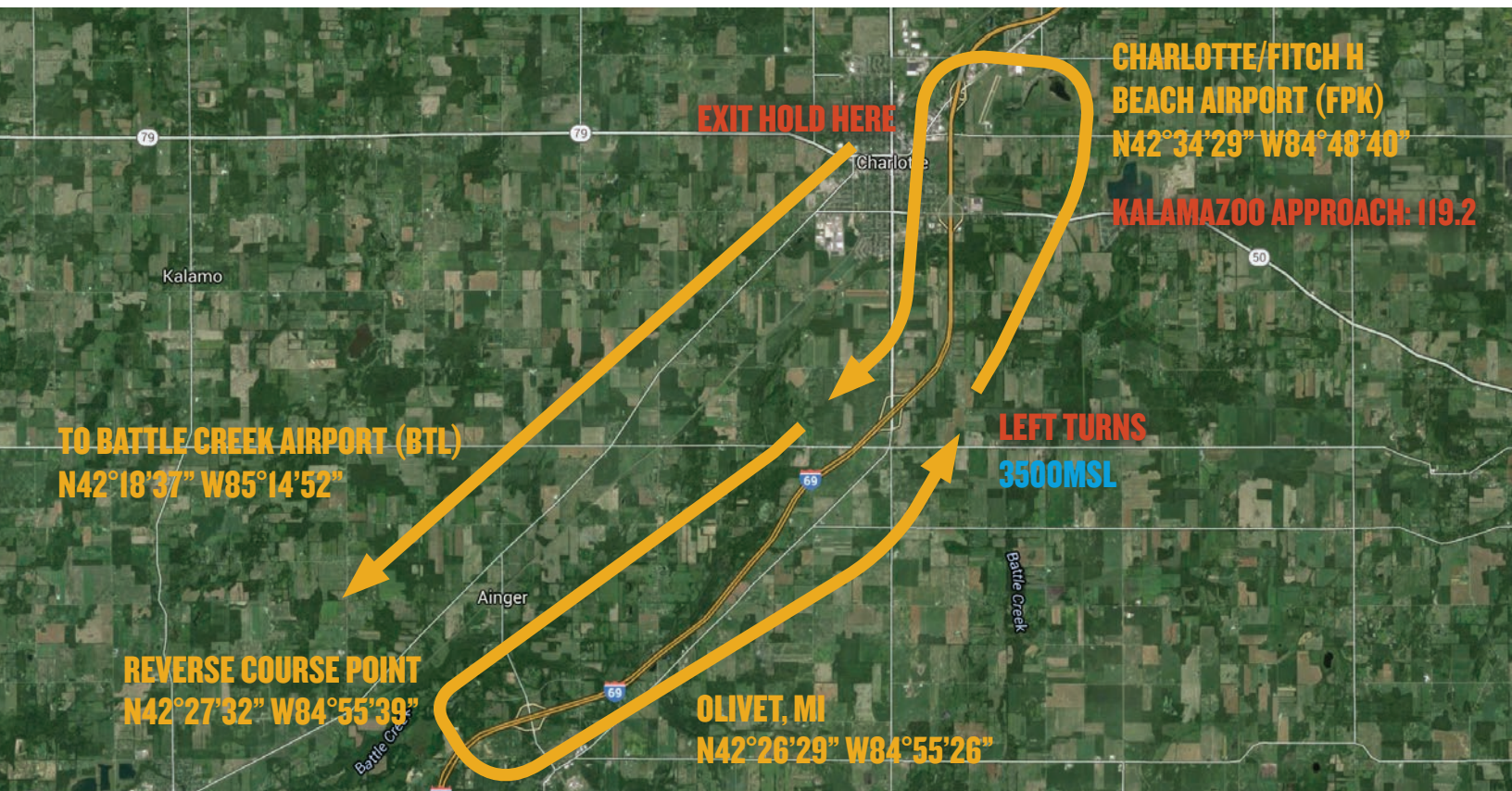
After landing, exit the runway as quickly and as safely as possible. Do not stop on the runway unless absolutely necessary. Keep moving after exiting the runway so as not to block subsequent arrivals. Follow taxi instructions and directional signs to the designated parking areas. Marshalls will direct aircraft to parking.

I-69 HOLD



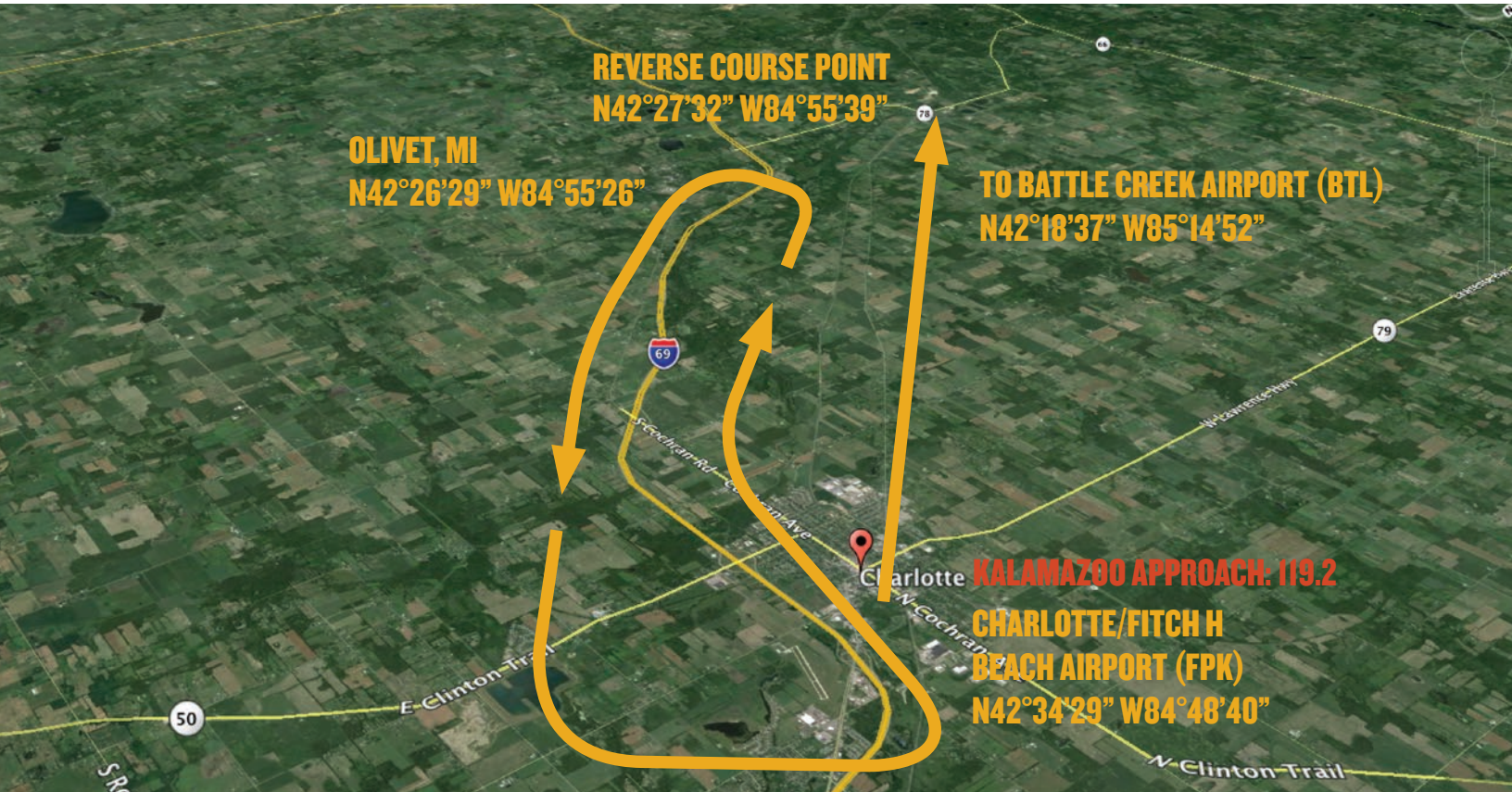
ATIS: 128.325 BTL TOWER (23R/5L): 126.825 (23L/5R): 133.325 BTL GROUND: 121.7

I-69 HOLD



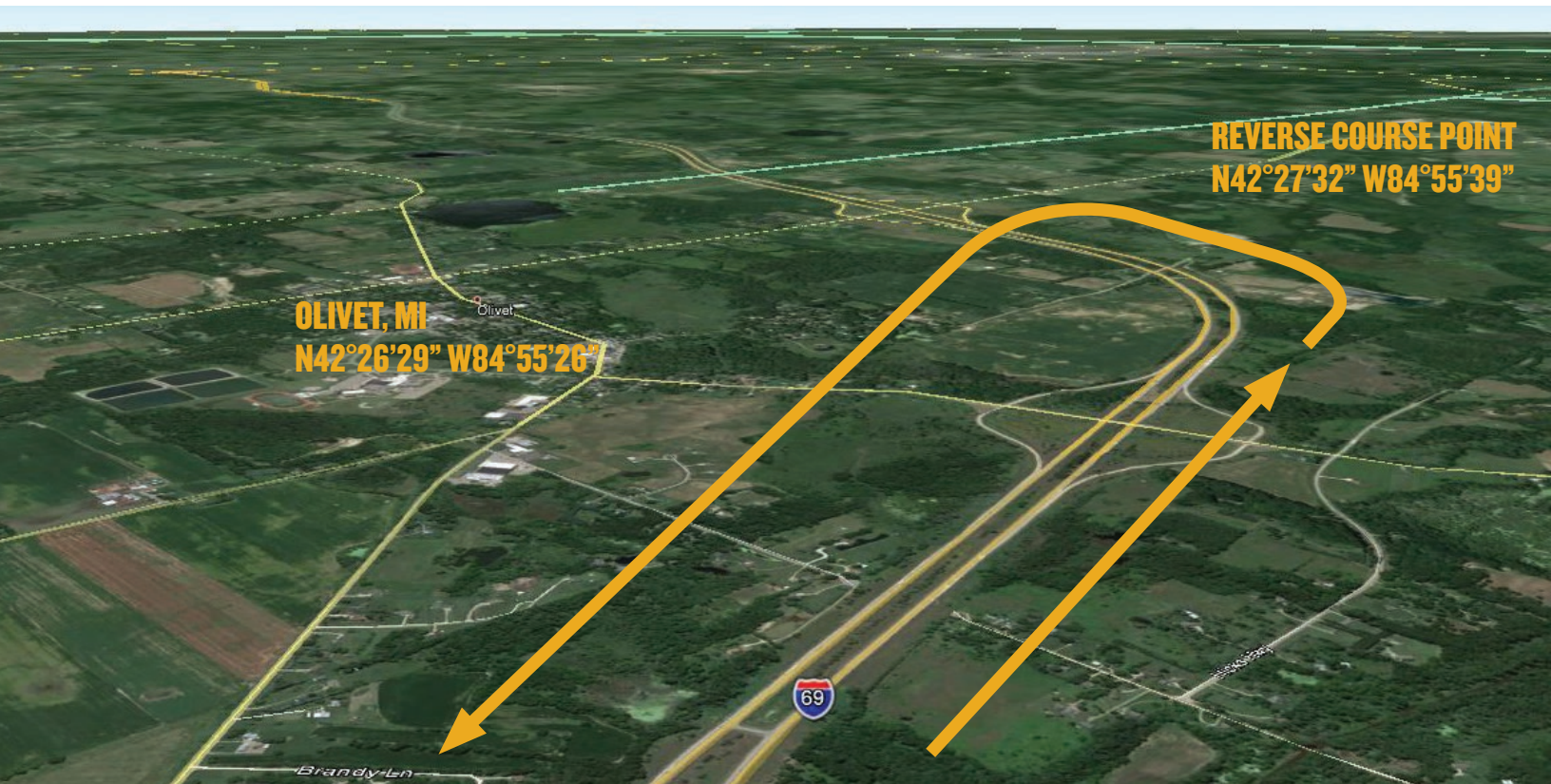
ATIS: 128.325 BTL TOWER (23R/5L): 126.825 (23L/5R): 133.325 BTL GROUND: 121.7

I-69 HOLD—LOOKING SOUTHWEST



ATIS: 128.325 BTL TOWER (23R/5L): 126.825 (23L/5R): 133.325 BTL GROUND: 121.7

I-69 HOLD



ATIS: 128.325 BTL TOWER (23R/5L): 126.825 (23L/5R): 133.325 BTL GROUND: 121.7

IFR DELAYS

IFR arrivals will be integrated with VFR traffic. However IFR separation requirements may cause delays when arrival rates exceed airport capacity. Pilots on an IFR flight plan should be prepared for potential holding at Battle Creek Airport (BTL). IFR flight plans to Battle Creek Airport (BTL) should be filed **at least 2 hours** prior to proposed departure time. Expect a straight in approach for 23R or 5L.

TEMPORARY BATTLE CREEK AIRPORT (BTL) CLOSURE FOR AEROBATIC DEMONSTRATION

There will be a 10-15 minute aerobatic demonstration between 12:00 Noon--1:00 PM local on Saturday, September 17, 2016 during the AOPA Fly-in. Arrivals and departures will be stopped for the duration of the demonstration. Please plan accordingly.

LOCAL TRAINING AND PRACTICE APPROACHES

Local traffic pattern, closed traffic training, and practice instrument approaches **may not** be available at Battle Creek Airport (BTL) during the AOPA Fly-In.

CAUTIONS

High density traffic during peak hours (8:00 AM-11:00 AM) of Fly-In at Battle Creek Airport (BTL).

Class D Airspace; Kalamazoo International Airport (AZO); 3400 feet MSL, 9 NM southwest of Battle Creek Airport (BTL)

Class C Airspace; Capital Region International Airport (LAN); 4900 feet MSL; 31 NM northeast of Battle Creek Airport (BTL)

Class C Airspace; Gerald Ford International Airport (GRR); 4800 feet MSL; 27 NM northwest of Battle Creek Airport (BTL)

FREQUENCY INFORMATION

ENROUTE FREQUENCIES

Kalamazoo Approach—Arriving Over “Coldwater”	123.8
Kalamazoo Approach—Arriving Over Gun Lake	119.2
Kalamazoo Approach—Arriving Over “Charlotte”	119.2

BATTLE CREEK AIRPORT (BTL) FREQUENCIES

Battle Creek ATIS	128.325
ATIS Telephone Number	269-964-0283
Battle Creek Tower—23R/5L	126.825
Battle Creek Tower—23L/5R	133.325
Battle Creek Ground	121.7
CTAF	126.825
UNICOM	122.95
Kalamazoo Approach/Departure	119.2

WAYPOINT INFORMATION

SPECIFIC LATITUDE/LONGITUDE COORDINATES

Arrivals Over Gun Lake

Gun Lake	N42°36'02"/W85°31'20"
Battle Creek Airport (BTL)	N42°18'37"/W85°14'52"

Arrivals Over Coldwater/Branch County Memorial Airport (OEB)

Coldwater/Branch County Memorial Airport (OEB)	N41°55'59"/W85°03'21"
Battle Creek Airport (BTL)	N42°18'37"/W85°14'52"

Arrivals Over Charlotte/Fitch H Beach Airport (FPK)

Charlotte/Fitch H Beach Airport (FPK)	N42°34'29"/W84°48'40"
Battle Creek Airport (BTL)	N42°18'37"/W85°14'52"

Union Lake Hold

Union Lake	N42°03'06"/W85°10'48"
Lehr/Kenyon/Oliverda Lakes	N42°02'47"/W85°15'11"
Union City	N42°04'00"/W85°08'10"

I-69 Hold

Charlotte/Fitch H Beach Airport (FPK)	N42°34'29"/W84°48'40"
Reverse Course Point/I-69 Hold	N42°27'32"/W84°55'39"
Olivet, MI	N42°26'29"/W84°55'26"

Gun Lake Hold

Gun Lake	N42°36'02"/W85°31'20"
----------	-----------------------

GENERAL INFORMATION

W K KELLOGG (BATTLE CREEK) AIRPORT (BTL)



ATIS: 128.325 BTL TOWER (23R/5L): 126.825 (23L/5R): 133.325 BTL GROUND: 121.7

PARKING AREAS

- When operating in the parking areas, pilots are encouraged to be extra alert for taxiing aircraft, aircraft with engine(s) running, and vehicle/pedestrian traffic.
- Marshalls will be assisting aircraft to and from parking areas and run-up areas.
- For safety reasons, high RPM engine running is prohibited in designated parking areas. For departure, it is recommended that pilots conduct their run-up procedures in queue if practical.
- Please review the parking map prior to landing and departure.

VEHICULAR TRAFFIC

- Vehicles are not allowed on ramps except those belonging to airport operators and tenants, and exhibitors participating in the AOPA Battle Creek Airport Fly-In.

PRE-FLIGHT PLANNING

- Please ensure that you have reviewed the special flight information, departure procedures, and temporary taxi procedures prior to engine start.
- High traffic density is expected Saturday morning and afternoon. Consider arriving during off-peak hours.

DEPARTURE PROCEDURES

BATTLE CREEK AIRPORT (BTL)

IFR DEPARTURES

Follow marshalls instructions to taxi to the nearest designated IFR departure holding area. IFR departures should obtain a clearance from Battle Creek Ground on **121.7** when ready for departure. **DO NOT CONTACT BATTLE CREEK GROUND FOR A CLEARANCE UNTIL YOU ARE READY TO DEPART.**

VFR DEPARTURES

VFR Flight Following (VFR Traffic Advisories): ATC will do everything possible to provide flight following to those requesting the service once aircraft are beyond 10 NM from Battle Creek Airport (BTL). Please do not make the request until at least 10 NM from BTL. See the flight following frequency graphic for which frequency to contact based on departure heading.

Prior to start-up: Please ensure that you have reviewed the special flight information, departure procedures, and temporary taxi procedures prior to engine start. Check ATIS on **128.325**.

Engine start: Locate a marshaller to monitor engine start.

Taxi: Follow instructions from marshalls to taxi for departure runway.

Run-up: If practical, it is recommended that you conduct your run-up while in queue for departure. Please consider propeller blast during your run-up.

MONITOR Battle Creek Ground on **121.7** during taxi. Switch to and **MONITOR** Battle Creek Tower on **126.825** when number 3 for departure. Be prepared for immediate departure when number one.

Departure

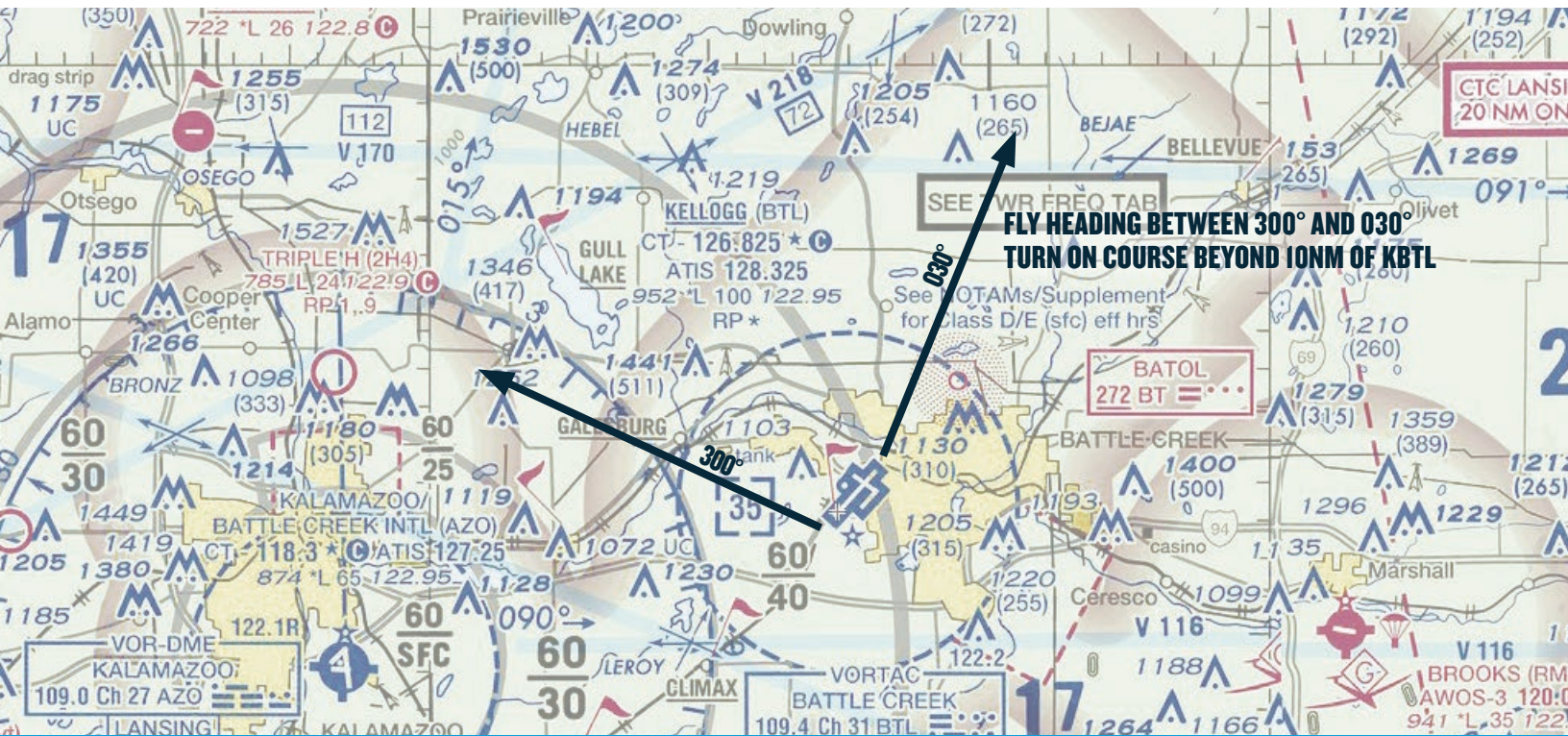
Runway 5L/23R: Fly heading between 300° and 030°. Turn on course when beyond 10 NM from Battle Creek Airport (BTL).

Runway 5R/23L: Fly heading between 060° and 210°. Turn on course when beyond 10 NM from Battle Creek Airport (BTL).

Caution: Kalamazoo International Airport (AZO) Class D Airspace; 9 NM southwest of Battle Creek Airport (BTL)

DEPARTURE PROCEDURES

RUNWAY 5L OR 23R IN USE



ATIS: 128.325 BTL TOWER (23R/5L): 126.825 (23L/5R): 133.325 BTL GROUND: 121.7

DEPARTURE PROCEDURES

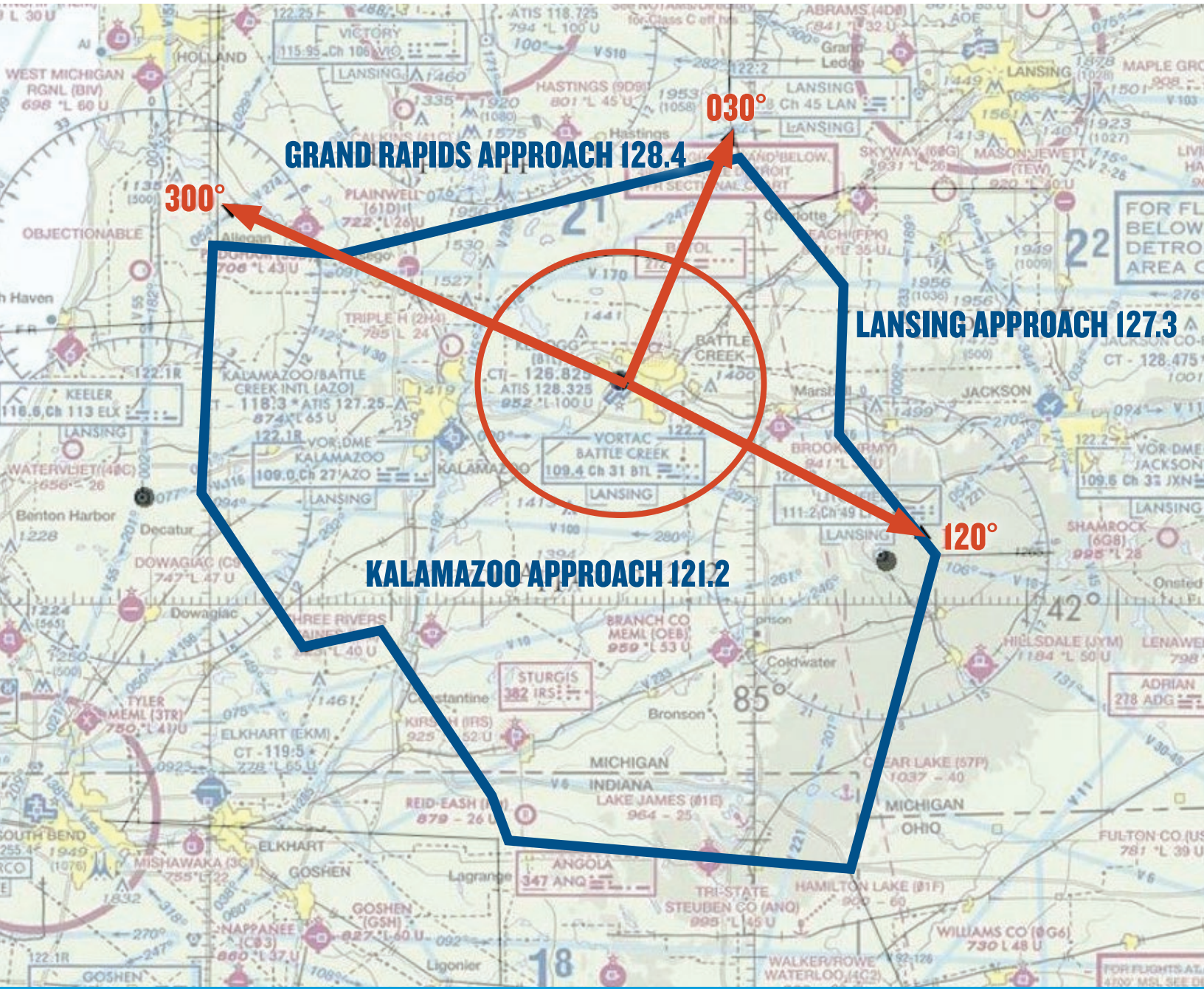
RUNWAY 5R OR 23L IN USE



ATIS: 128.325 BTL TOWER (23R/5L): 126.825 (23L/5R): 133.325 BTL GROUND: 121.7

FLIGHT FOLLOWING FREQUENCIES

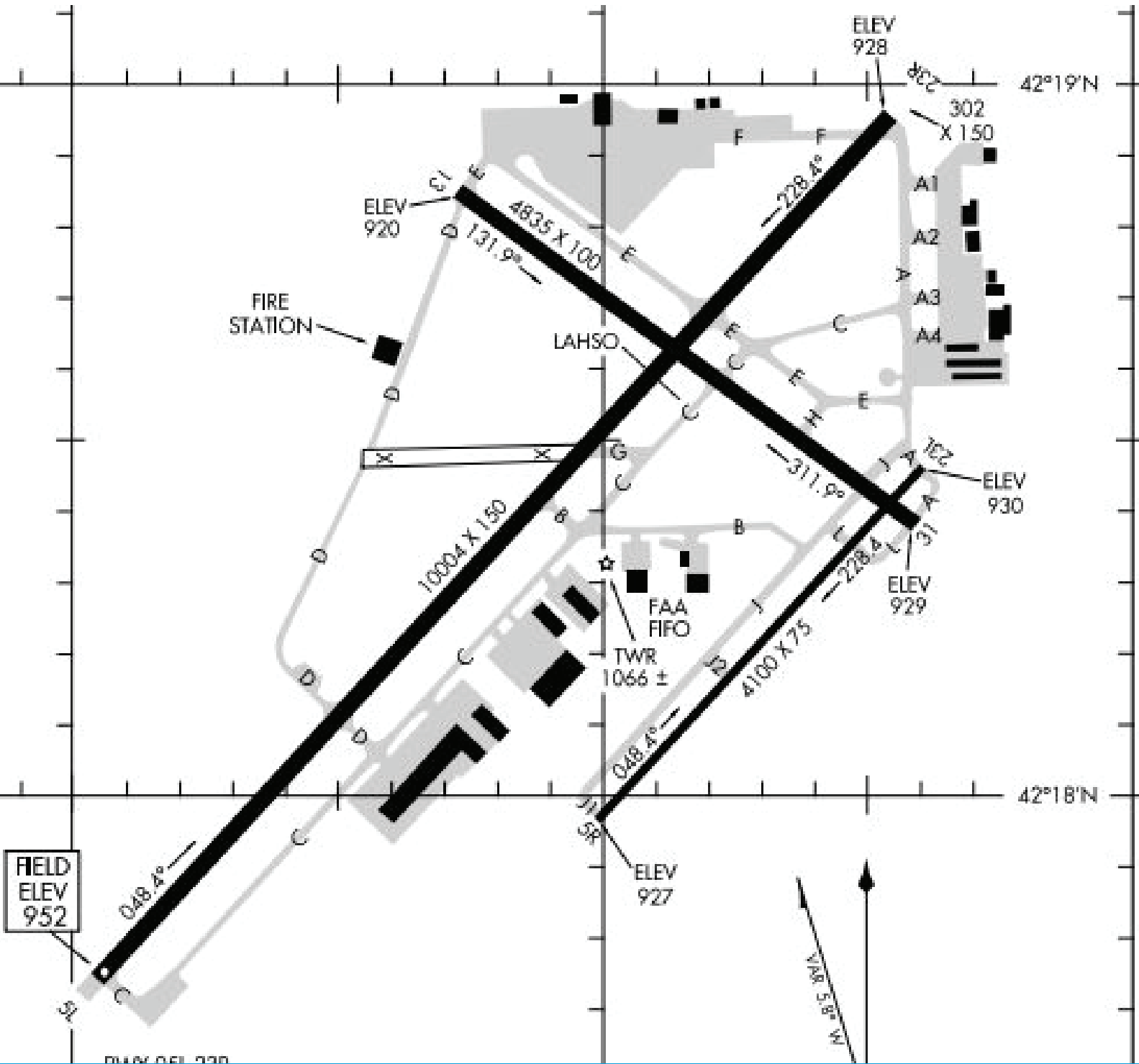
BEYOND 10 NM



ATIS: 128.325 BTL TOWER (23R/5L): 126.825 (23L/5R): 133.325 BTL GROUND: 121.7

AIRPORT DIAGRAM

W K KELLOGG (BATTLE CREEK) AIRPORT (KBTL)



ATIS: 128.325 | BTL TOWER (23R/5L): 126.825 (23L/5R): 133.325 | BTL GROUND: 121.7

ADDITIONAL INFORMATION

BATTLE CREEK PILOT INFORMATION PACKET

NO RADIO AIRCRAFT

Aircraft operations without a radio are not recommended.

STUDENT PILOTS

Due to high traffic volumes and airspace congestion, we highly recommend that student pilots be accompanied by either a flight instructor or an experienced pilot.

AOPA FLY-IN HOST FBOs AT W K KELLOGG AIRPORT (BTL)

The AOPA Fly-In Host FBOs at W K Kellogg Airport (BTL) are Duncan Aviation and Centennial Aircraft Services. We thank them for their support, enthusiasm, and participation in the AOPA Fly-In at BTL.



Centennial Aircraft Services

15955 South Airport Road
Battle Creek, MI 49015

Hours of operation:
Monday-Friday 8:00 AM – 5:00 PM

Phone: 269-565-3200
Fax: 269-565-1100
Email: centair@centennialair.com
Website: www.centennialair.com



Duncan Aviation

15745 South Airport Road
Battle Creek, MI 49015

Hours of operation:
Monday-Sunday 24/7

Phone: 269-969-8400
Fax: 269-969-8432
Email: btl.flightdesk@duncanaviation.com
Web site: www.duncanaviation.aero

PARKING AND SERVICE DETAILS

Fuel/oil service will be provided by **Duncan Aviation**. Orders will be taken at the time your aircraft is parked. If you need either, please make sure to make the request at that time. Orders made at a later time could delay your departure. Credit card information will be requested at the time the order is placed. Receipts if requested will be emailed or will be available in the FBO. An order slip will be attached to your propeller. If you are uncomfortable providing credit card information on the ramp, you can provide the information directly to the FBO's front desk.

CHOCKS AND TIE DOWNS

Chocks will be available in **limited quantities** so we highly recommend that you bring your own. Tie down hooks are scattered on the ramp and parking on tie down spaces is unlikely. It is recommended that you bring tie-downs and anchors for any additional aircraft securing needs.

CAMPING

Aircraft camping will be permitted at W K Kellogg Airport (BTL) on Friday, September 16 and Saturday, September 17, 2016. Space is limited and will be available on a first-come, first-served basis. There is no charge. **If you plan to camp, you must RSVP ahead of time.** A confirmation will be sent with additional information. Camping aircraft will be requested to prominently display the letter C in the windshield. **See the AOPA website for more information.**

AFTER-HOURS DEPARTURES

If you will be departing after the airport's normal operating hours please contact the after-hours Line Service number at (269) 969-8400. An after-hours callout is subject to an additional fee.

RENTAL CAR AVAILABILITY



Phone: 866-315-9155

Also available: Hertz

OTHER AREA AIRPORTS

There are several public use airports that are within an hour drive of W K Kellogg Airport (BTL). You might elect to use one of these airports in the event aircraft parking reaches capacity at BTL. Rental cars are also available at many of these airports. Please contact the airport directly for more information.



BRANCH COUNTY MEMORIAL AIRPORT (OEB) is located 24 nautical miles southeast of W K Kellogg Airport (BTL) and is approximately a 50 minute drive to BTL. Branch County Memorial Airport has two hard surface runways. 07/25 is 5350 X 75 and 04/22 is 3500 X 75. There is also one turf runway. 16/34 is 2400 X 190. The airspace is Class G. Contact the airport for rental car availability at 517-317-4802.



FITCH H BEACH AIRPORT (FPK) is located 25 nautical miles northeast of W K Kellogg Airport (BTL) and is approximately a 40 minute drive to BTL. Fitch H Beach Airport (FPK) has one hard surface runway. 02/20 is 3510 X 75. There is also one turf runway. 14/32 is 2298 X 95. The airspace is Class G. Contact the airport directly for rental car availability. 517-541-2746.



BROOKS FIELD AIRPORT (RMY) is located 13 nautical miles southeast of W K Kellogg Airport (BTL) and is approximately a 28 minute drive to BTL. Brooks Field Airport has one hard surface runway. 10/28 is 3501 X 75. The airspace is Class G. Contact the airport directly for rental car availability. 269-558-0323.

Hastings Airport

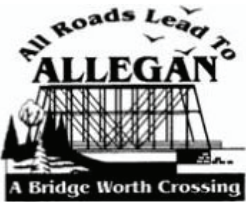
HASTINGS AIRPORT (9D9) is located 21 nautical miles northwest of W K Kellogg Airport (BTL) and is approximately a 44 minute drive to BTL. Hastings Airport has on hard surface runway. 12/30 is 4502 X 75. There are also two turf runways. 09/27 is 2379 X 170 and 18/36 is 1950 X 200. The airspace is Class G. Contact the airport directly for rental car availability. 269-945-6303.



KALAMAZOO/BATTLE CREEK INTERNATIONAL AIRPORT (AZO) is located 14 nautical miles southwest of W K Kellogg Airport (BTL) and is approximately a 21 minute drive to BTL. Kalamazoo/Battle Creek International Airport has three hard surface runways. 05/23 is 3439 X 100. 09/27 is 2800 X 60. 17/35 is 6502 X 150. The airspace is Class D with TRSA. Rental cars are available through Enterprise, National, and Alamo at 866-315-9155. Also available: Avis, Budget, and Hertz.



THREE RIVERS MUNICIPAL DR HAINES AIRPORT (HAI) is located 25 nautical miles southwest of W K Kellogg Airport (BTL) and is approximately a 49 minute drive to BTL. Three Rivers Municipal Dr Haines Airport has two hard surface runways. 05/23 is 2714 X 60 and 09/27 is 3999 X 75. The airspace is Class G. Rental cars are available through Enterprise at 866-315-9155.



PADGHAM FIELD AIRPORT(35D) is located 28 nautical miles northwest of W K Kellogg Airport (BTL) and is approximately a 50 minute drive to BTL. Padgham Field Airport has one hard surface runway. 11/29 is 4300 X 75. There is also one turf runway. 15/33 is 1830 X 150. The airspace is Class G. Contact the airport directly for rental car availability. 269-686-1115.

LOW TRANSITION DEPARTURES ARE A NO-NO! PLEASE DEPART USING A NORMAL CLIMBOUT



LANDING 23L—BATTLE CREEK



LANDING 23R—BATTLE CREEK



LANDING 5R—BATTLE CREEK



LANDING 5L—BATTLE CREEK



SHOW CENTER—BATTLE CREEK



BRANCH COUNTY MEMORIAL AIRPORT (OEB)

FREQUENCIES

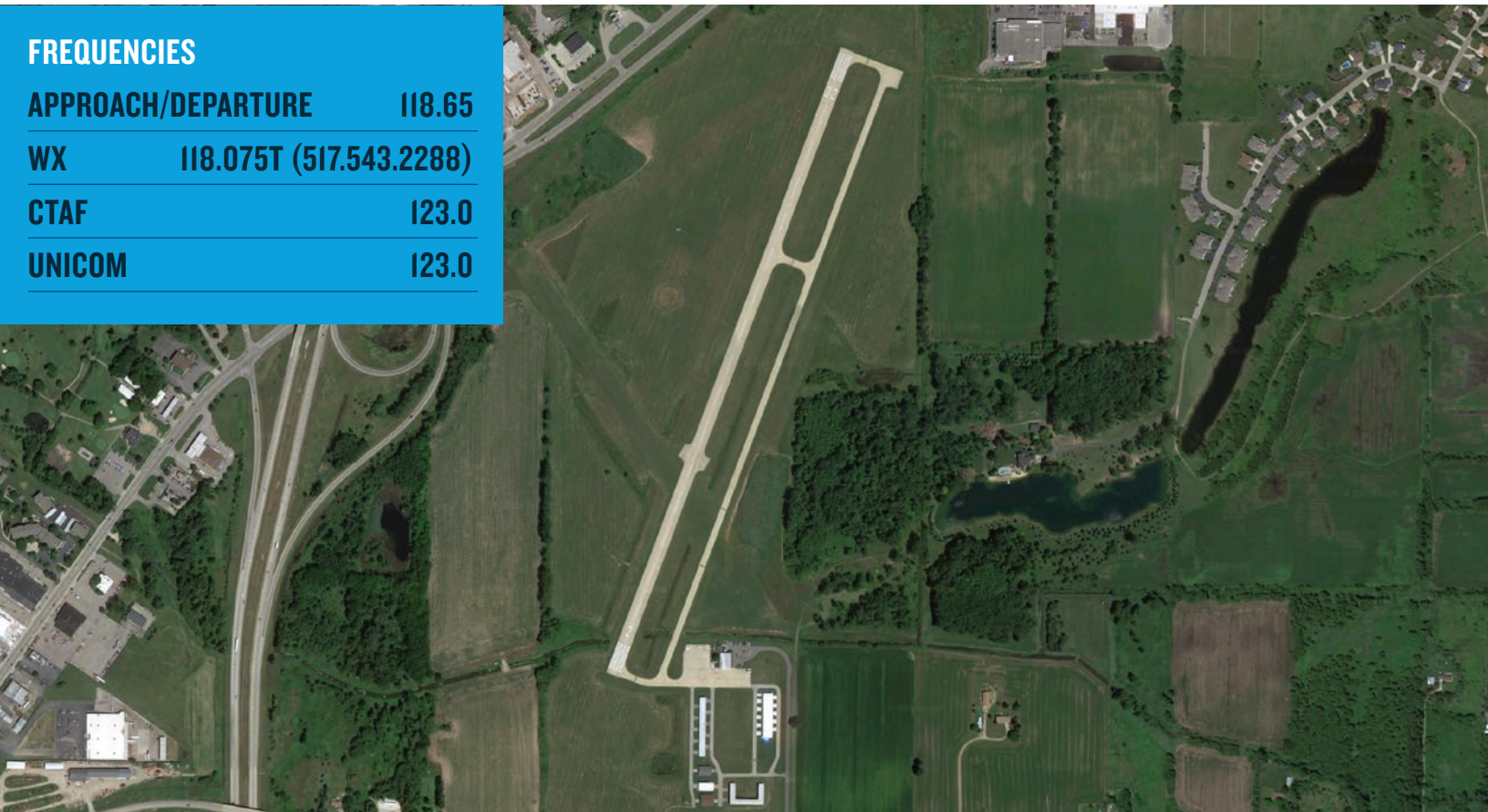
APPROACH/DEPARTURE	121.2
WX	118.125T (517.279.1810)
CTAF	122.7
UNICOM	122.7



FITCH H BEACH AIRPORT (FPK)

FREQUENCIES

APPROACH/DEPARTURE	118.65
WX	118.075T (517.543.2288)
CTAF	123.0
UNICOM	123.0



BROOKS FIELD AIRPORT (RMY)

FREQUENCIES

APPROACH/DEPARTURE	119.2
WX	120.025T (269.781.9070)
CTAF	122.8
UNICOM	122.8



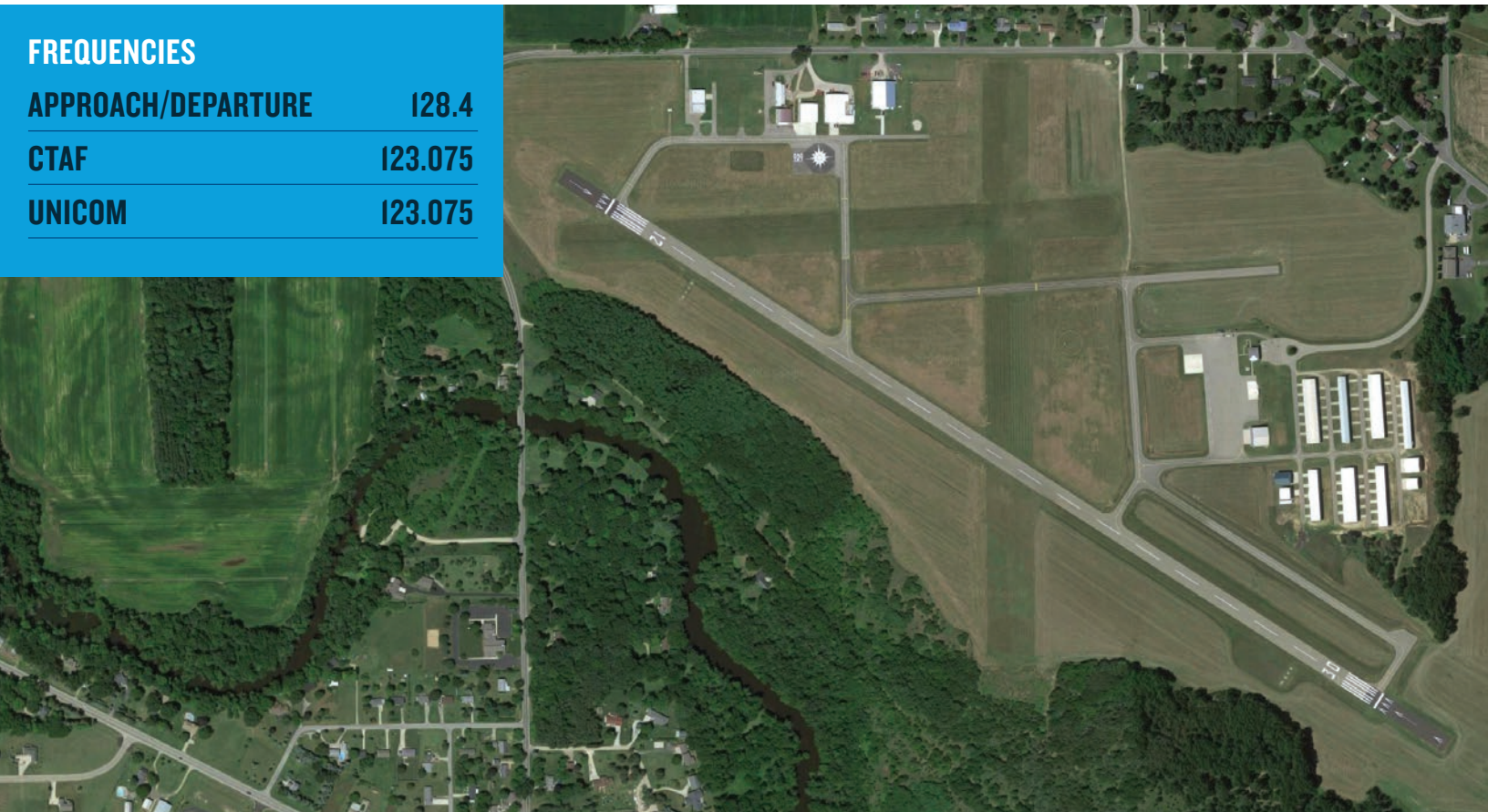
HASTINGS AIRPORT (9D9)

FREQUENCIES

APPROACH/DEPARTURE 128.4

CTAF 123.075

UNICOM 123.075



THREE RIVERS MUNICIPAL DR HAINES AIRPORT (HAI)

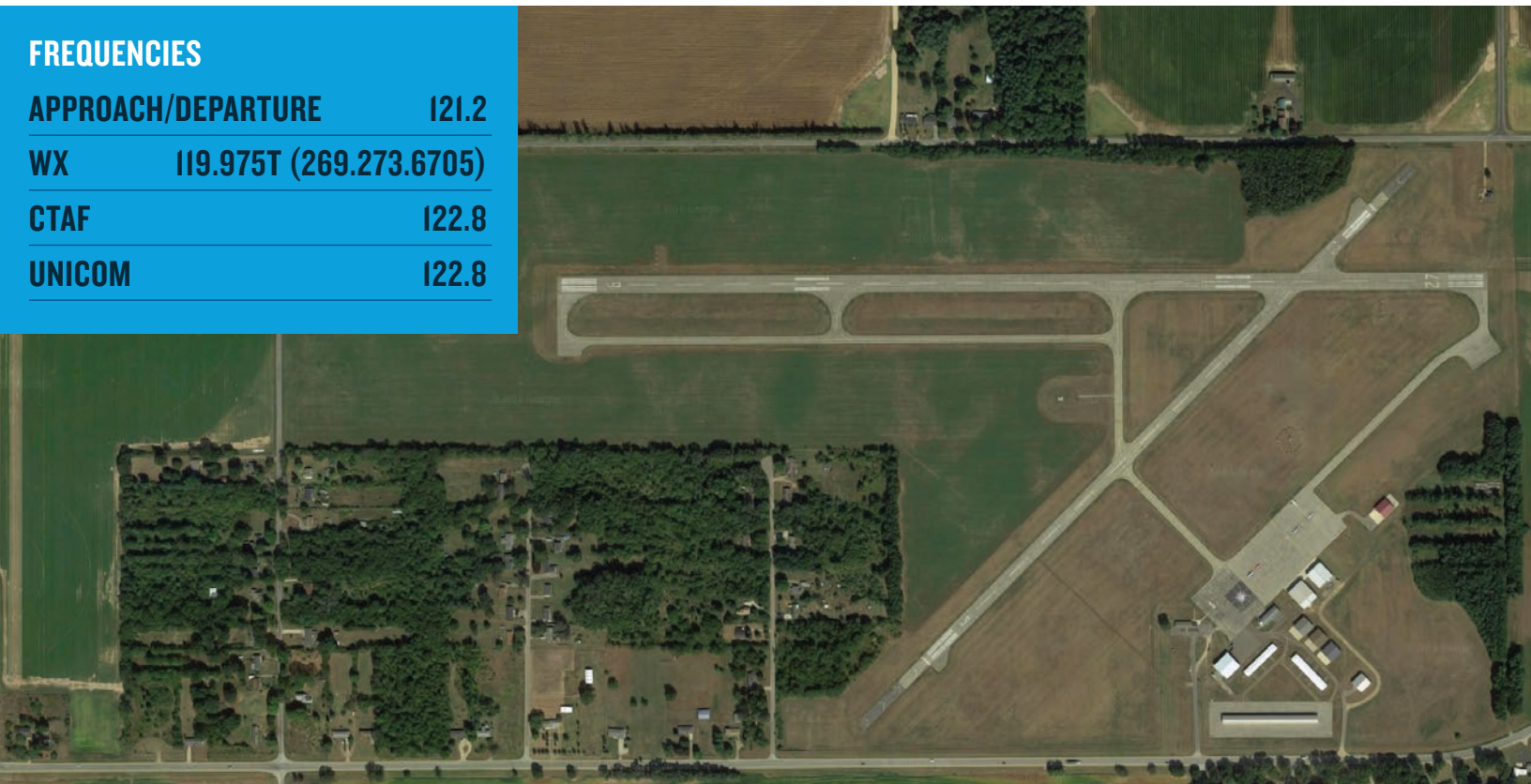
FREQUENCIES

APPROACH/DEPARTURE 121.2

WX 119.975T (269.273.6705)

CTAF 122.8

UNICOM 122.8



KALAMAZOO/BATTLE CREEK INTERNATIONAL AIRPORT (AZO)

FREQUENCIES

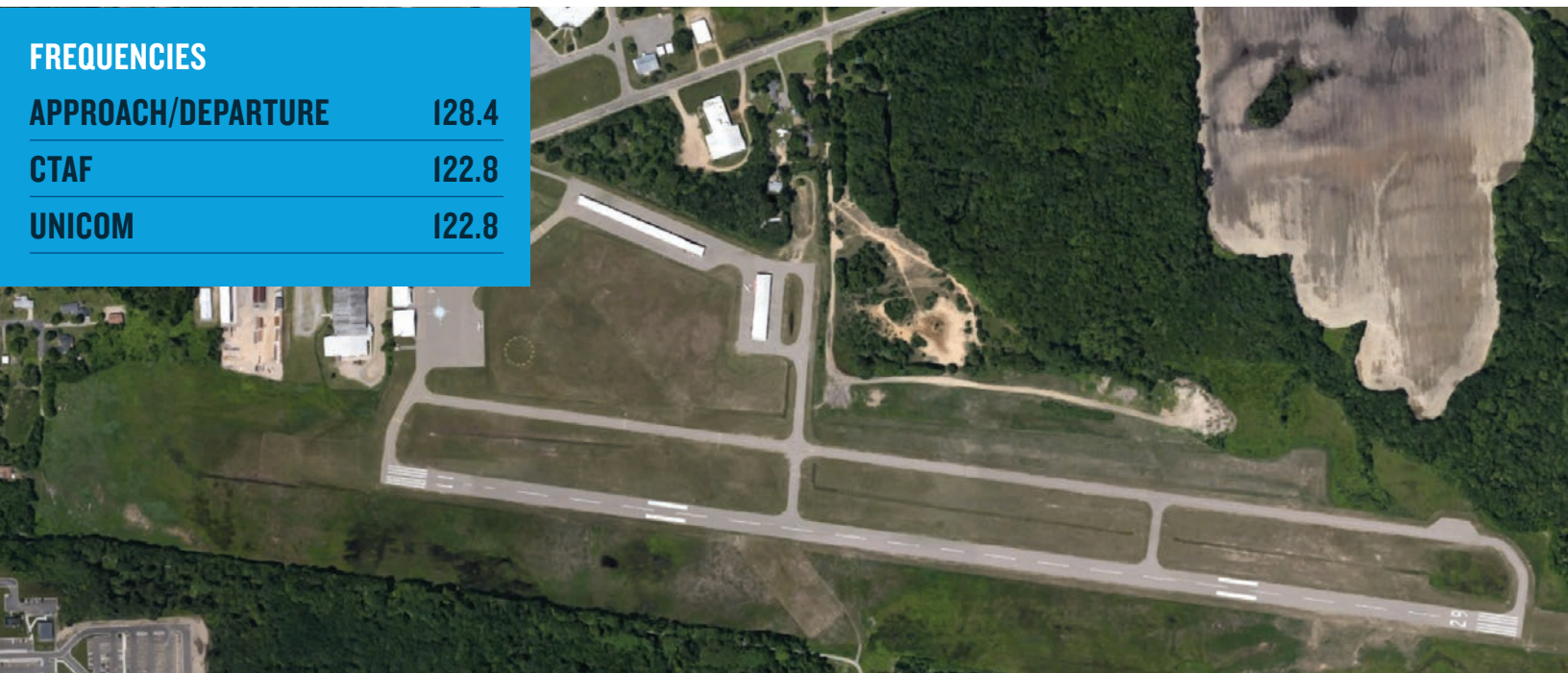
APPROACH/DEPARTURE TRSA	119.2
APPROACH/DEPARTURE TRSA IC	121.2
APPROACH/DEPARTURE (S)	123.8
WX	.0T (269.384.5729)
ATIS	127.25
CLEARANCE-DELIVERY	121.75
CLEARANCE-DELIVERY (S) <i>(WHEN ATCT CLSD THRU CHICAGO ARTCC)</i>	121.2
CTAF	118.3
EMERG	121.5
GROUND CONTROL	121.9
TOWER	118.3
UNICOM	122.95



PADGHAM FIELD AIRPORT (35D)

FREQUENCIES

APPROACH/DEPARTURE	128.4
CTAF	122.8
UNICOM	122.8



AOPA FLY-IN

W K KELLOGG AIRPORT (KBTL)

SEPT 16-17 | BATTLE CREEK, MI



PRINT & PLACE GRAPHIC IN AIRCRAFT WINDSHIELD