

AOPA FLY-IN

W K KELLOGG AIRPORT (KBTL)

NOTAM

SEPT 16-17 | BATTLE CREEK, MI

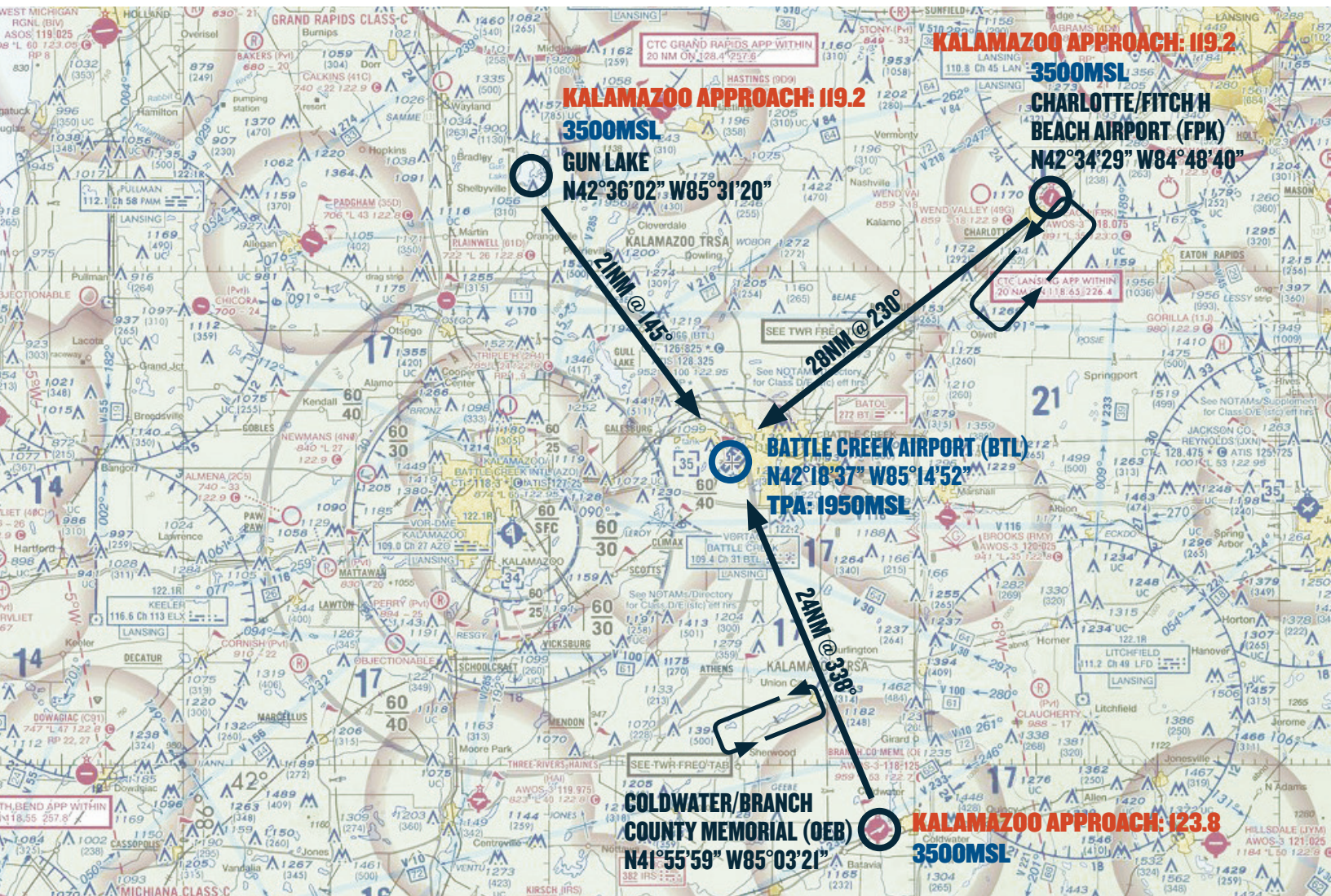
.....

SPECIAL FLIGHT PROCEDURES EFFECTIVE

12:00 Noon EDT until 6:00PM EDT Friday, September 16 and
7:00AM EDT until 6:00PM EDT Saturday, September 17, 2016



VFR ARRIVALS OVERVIEW



ATIS: 128.325 BTL TOWER (23R/5L): 126.825 (23L/5R): 133.325 BTL GROUND: 121.7

TEMPORARY VFR PROCEDURES

Specific procedures contained within this NOTAM may be revised at the time of the event. Pilots are urged to review all applicable NOTAMs and arrival/departure procedures prior to conducting a flight to Battle Creek Airport (BTL). Users are encouraged to check NOTAMs frequently to verify they possess the most current revisions. This NOTAM does not supersede restrictions pertaining to the use of airspace contained in FDC NOTAMs.

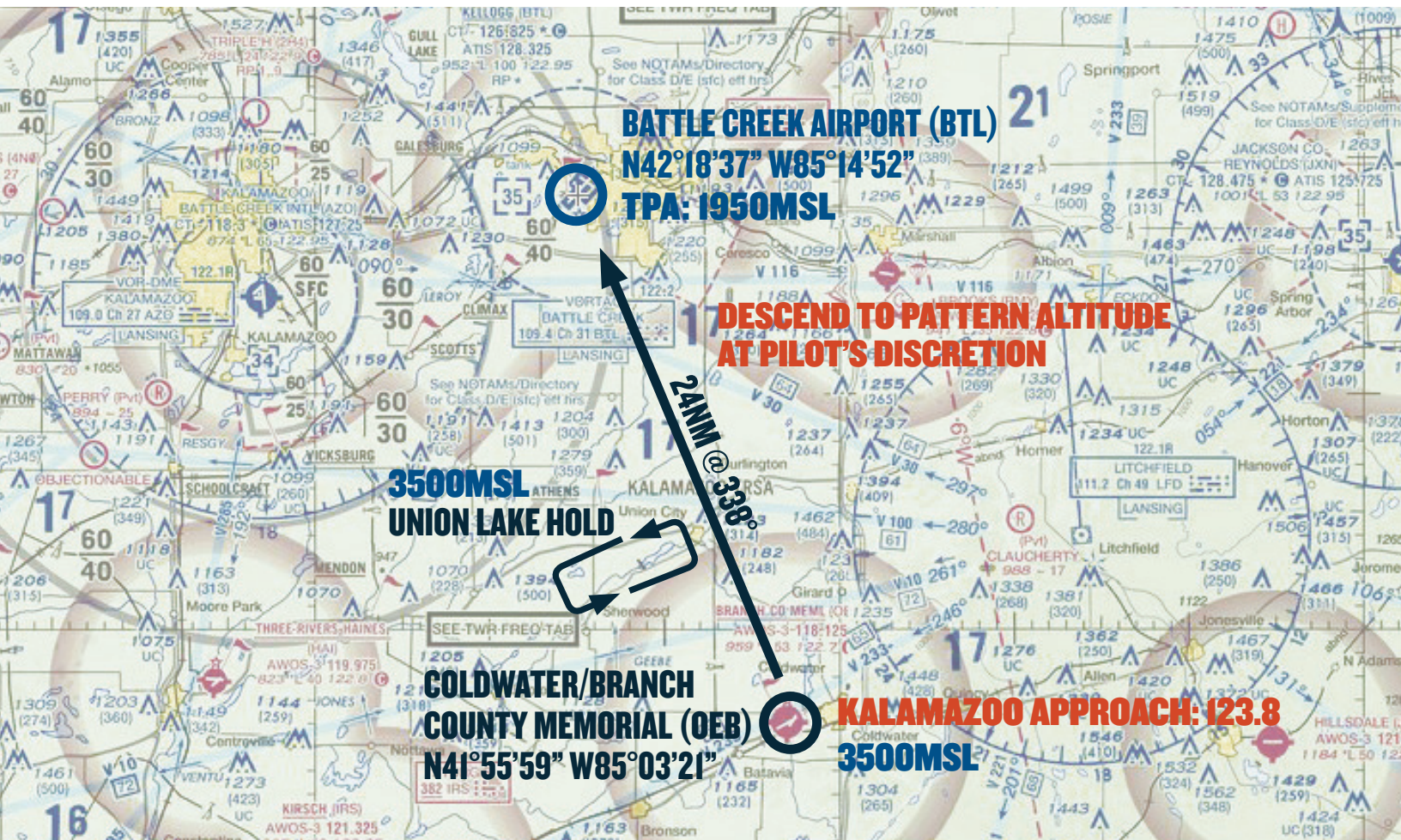
VFR ARRIVALS

All VFR arrivals must begin over:

1. Branch County Memorial Airport (OEB) (referred to as Coldwater), 24 nautical miles southeast of Battle Creek Airport (BTL),
2. Gun Lake, 21 nautical miles northwest of Battle Creek Airport (BTL), or
3. Fitch H Beach Airport (FPK) (referred to as Charlotte), 25 nautical miles northeast of Battle Creek Airport (BTL).

VFR PROCEDURES

ARRIVALS OVER COLDWATER/BRANCH COUNTY MEMORIAL AIRPORT (OEB)



ATIS: 128.325 BTL TOWER (23R/5L): 126.825 (23L/5R): 133.325 BTL GROUND: 121.7

CHECK BATTLE CREEK ATIS ON 128.325 AS SOON AS PRACTICAL.

This procedure begins over Branch County Memorial Airport (OEB), referred to as **Coldwater**, at 3500 feet MSL. All aircraft should contact Kalamazoo Approach on **123.8** prior to reaching Coldwater.

Stay alert for other aircraft converging at Coldwater.

From Coldwater, proceed inbound toward Battle Creek Airport (BTL); 24 nautical miles on an approximate heading of 338°. Do not proceed beyond the *Union Lake Hold* unless in contact with and instructed to do so by Kalamazoo Approach on **123.8**.

If instructions to continue inbound have not been received or traffic volume requires holding, follow the holding procedure as depicted in the *Union Lake Hold graphic*. All aircraft should fly left turns at 3500 feet MSL.

Stay alert for other aircraft in the Union Lake Hold or converging over the town of Union City.

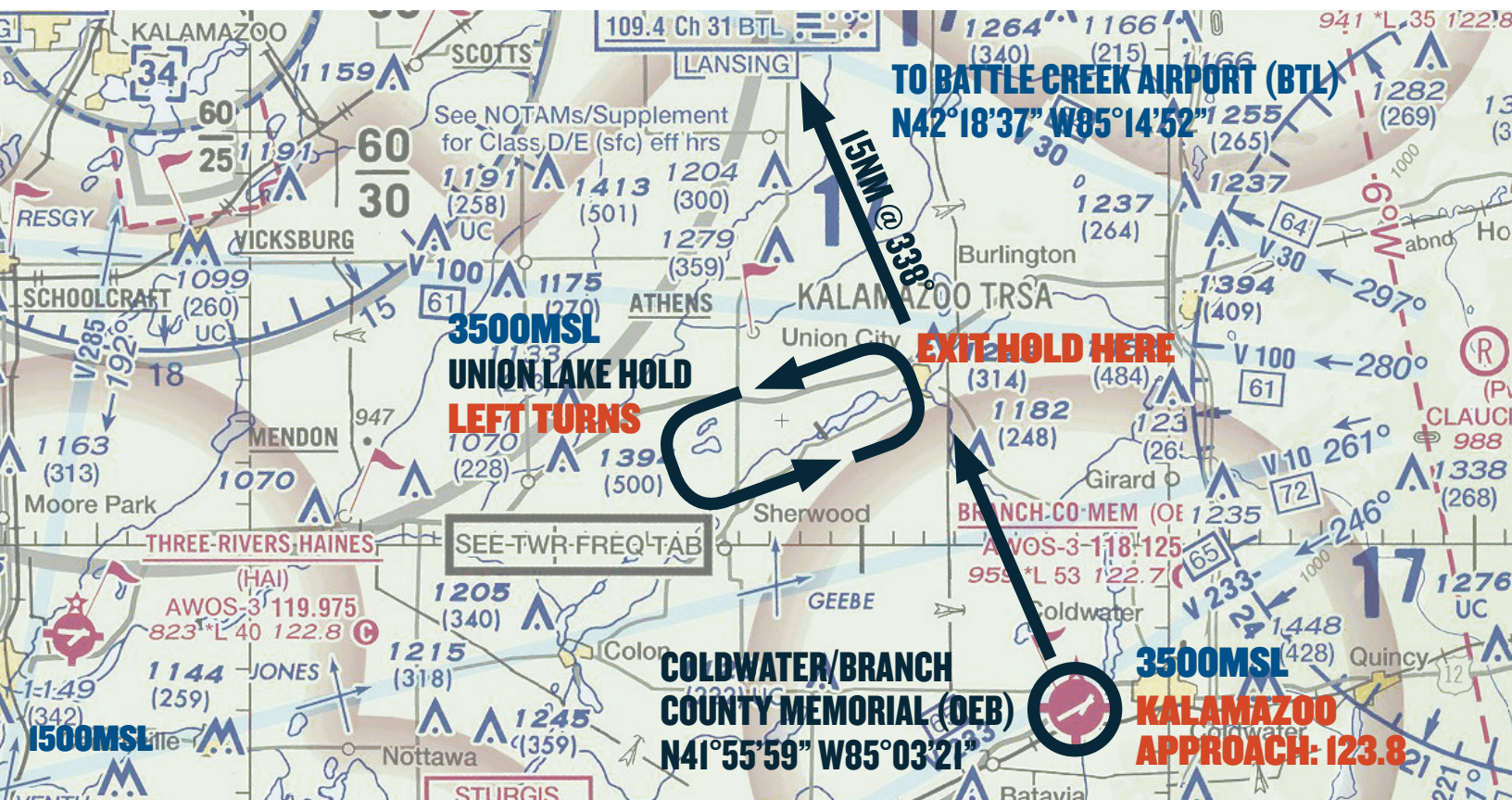
When holding is no longer required, aircraft should complete the hold and return over the town of Union City and continue inbound. Begin descent to traffic pattern altitude at pilot's discretion once inbound toward Battle Creek Airport (BTL).

Traffic Pattern Altitude: 1950 MSL

Expect radar services to be terminated approximately 10 nautical miles from Battle Creek Airport (BTL) and to be instructed to contact Battle Creek Tower on **133.325**. Depending on wind conditions, expect a midfield left downwind entry for runway 23L or a midfield right downwind entry for runway 5R.

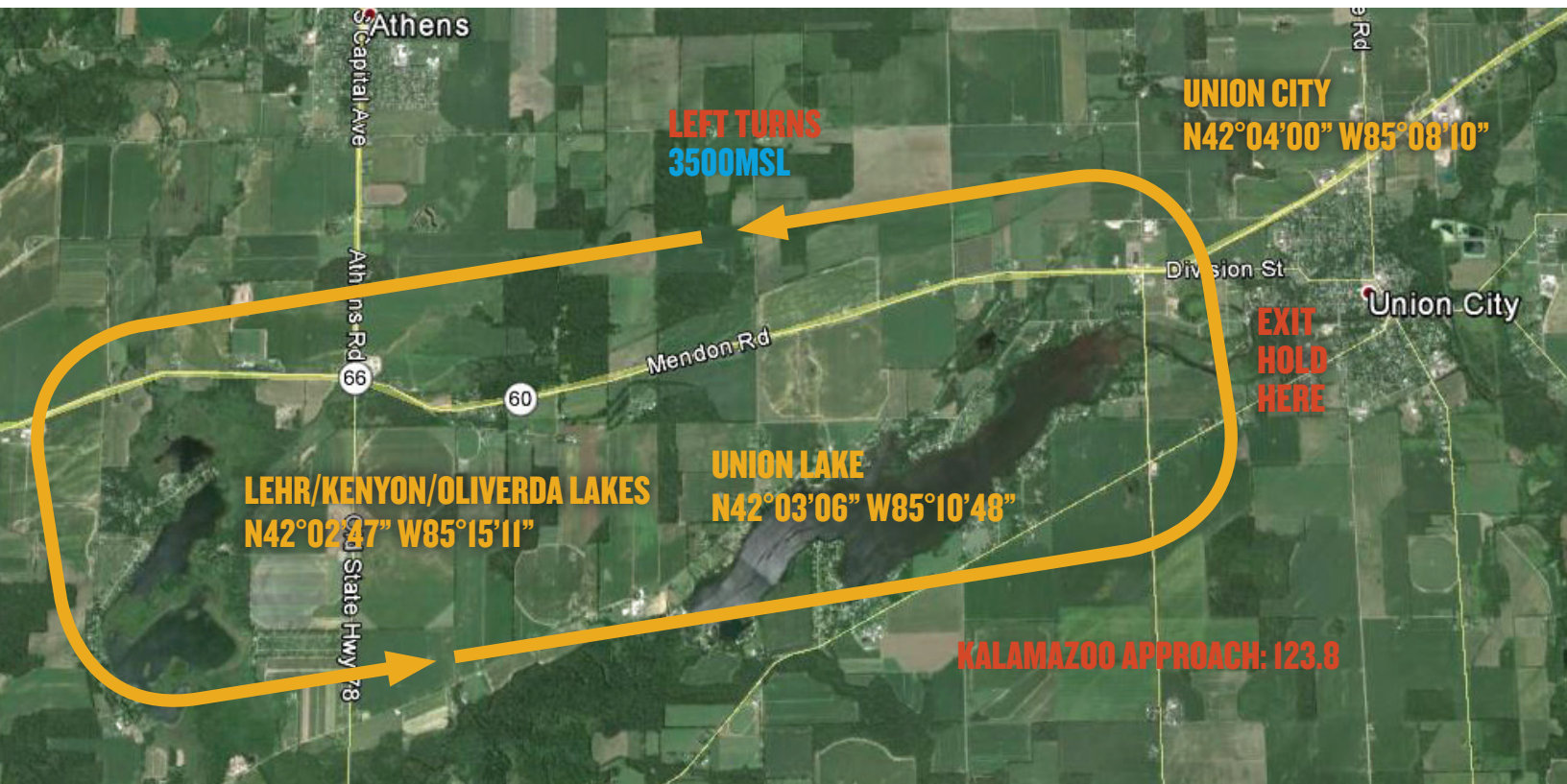
After landing, exit the runway as quickly and as safely as possible. Do not stop on the runway unless absolutely necessary. Keep moving after exiting the runway so as not to block subsequent arrivals. Follow taxi instructions and directional signs to the designated parking areas. Marshalls will direct aircraft to parking.

UNION LAKE HOLD



ATIS: 128.325 BTL TOWER (23R/5L): 126.825 (23L/5R): 133.325 BTL GROUND: 121.7

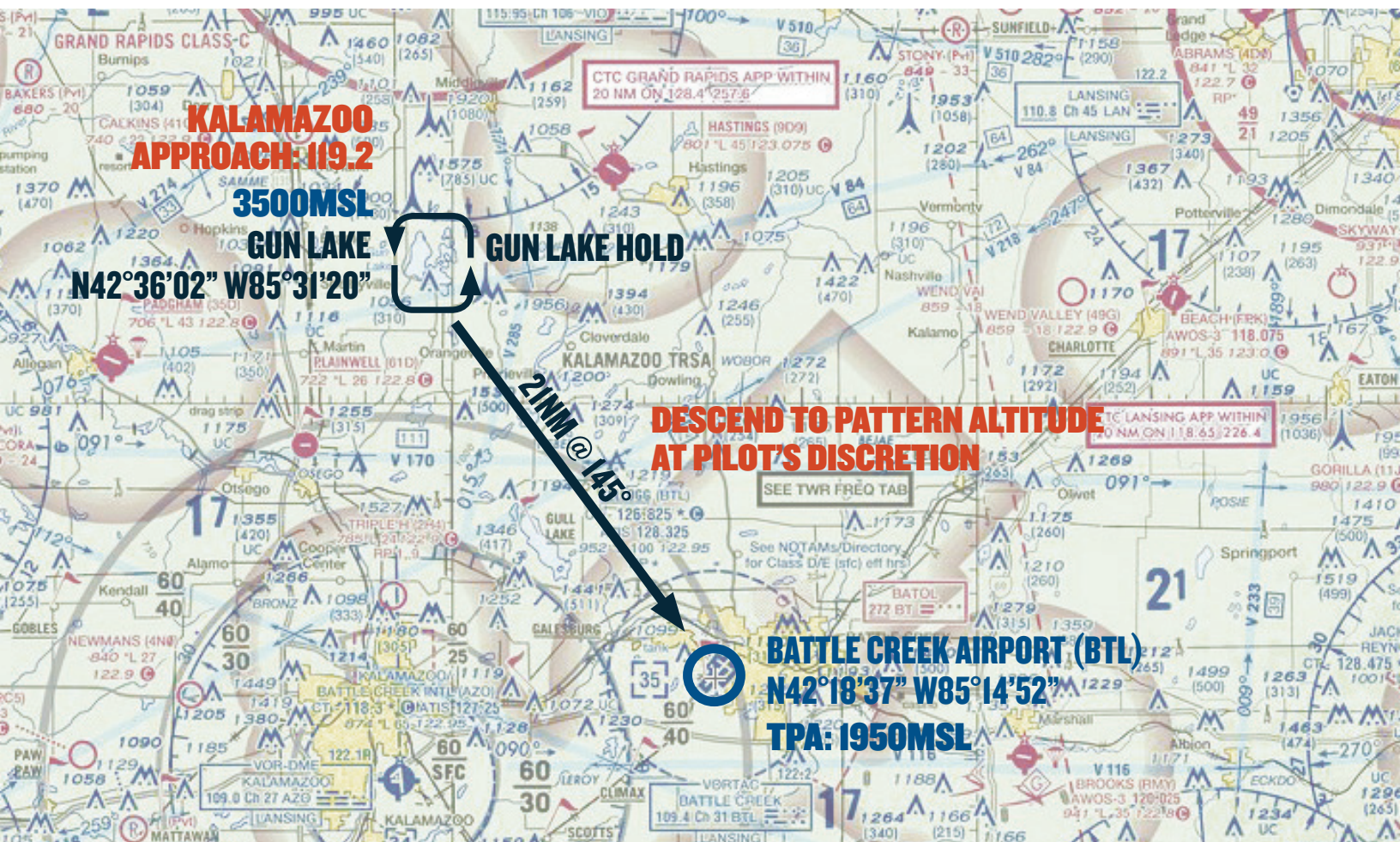
UNION LAKE HOLD



ATIS: 128.325 BTL TOWER (23R/5L): 126.825 (23L/5R): 133.325 BTL GROUND: 121.7

VFR PROCEDURES

ARRIVALS OVER GUN LAKE



ATIS: 128.325 BTL TOWER (23R/5L): 126.825 (23L/5R): 133.325 BTL GROUND: 121.7

CHECK BATTLE CREEK ATIS ON 128.325 AS SOON AS PRACTICAL

This procedure begins over Gun Lake at 3500 feet MSL. All aircraft should contact Kalamazoo Approach on **119.2** prior to reaching Gun Lake. Do not proceed inbound toward Battle Creek Airport (BTL) unless instructed to do so by Kalamazoo Approach. (To BTL; 145° / 21 NM)

Stay alert for other aircraft converging over Gun Lake.

If instructions to continue inbound have not been received or traffic volume requires holding, follow the holding procedure as depicted in the *Gun Lake Hold graphic*. All aircraft should fly left turns at 3500 feet MSL.

Stay alert for other aircraft in the Gun Lake Hold.

When holding is no longer required, aircraft should complete the hold and continue inbound. Begin descent to traffic pattern altitude at pilot's discretion once inbound toward Battle Creek Airport (BTL).

Traffic Pattern Altitude: 1950 MSL

Expect radar services to be terminated approximately 10 nautical miles from Battle Creek Airport (BTL) and to be instructed to contact Battle Creek Tower on **126.825**. Depending on wind conditions, expect a midfield right downwind entry for runway 23R or a midfield left downwind entry for runway 5L.

After landing, exit the runway as quickly and as safely as possible. Do not stop on the runway unless absolutely necessary. Keep moving after exiting the runway so as not to block subsequent arrivals. Follow taxi instructions and directional signs to the designated parking areas. Marshalls will direct aircraft to parking.

GUN LAKE HOLD



ATIS: 128.325 BTL TOWER (23R/5L): 126.825 (23L/5R): 133.325 BTL GROUND: 121.7

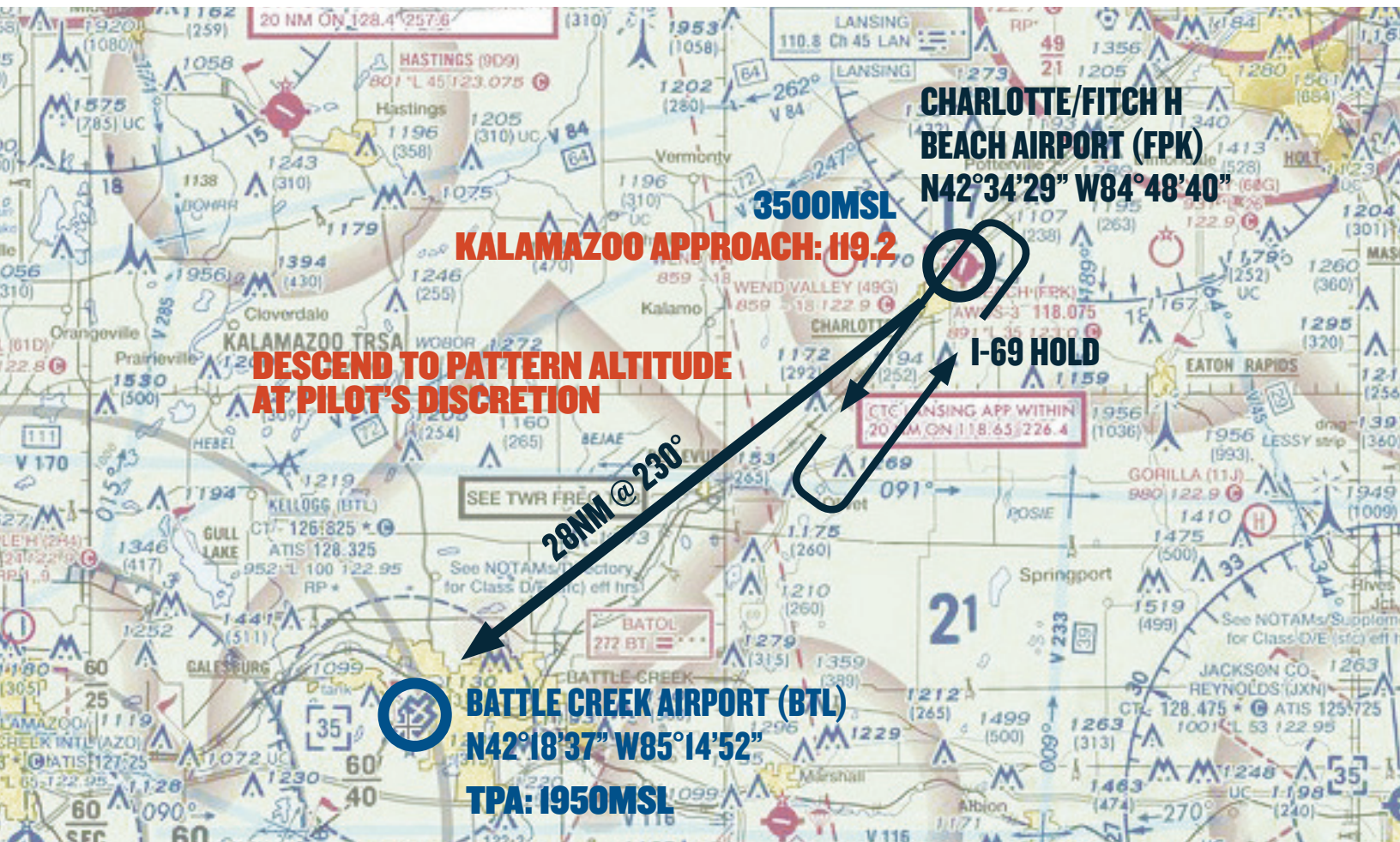
GUN LAKE HOLD



ATIS: 128.325 BTL TOWER (23R/5L): 126.825 (23L/5R): 133.325 BTL GROUND: 121.7

VFR PROCEDURES

ARRIVALS OVER CHARLOTTE/FITCH H BEACH AIRPORT (FPK)



ATIS: 128.325 BTL TOWER (23R/5L): 126.825 (23L/5R): 133.325 BTL GROUND: 121.7

CHECK BATTLE CREEK ATIS ON 128.325 AS SOON AS PRACTICAL.

This procedure begins over Fitch H Beach Airport (FPK), referred to as **Charlotte**, at 3500 feet MSL. All aircraft should contact Kalamazoo Approach on **119.2** prior to reaching Charlotte. Do not proceed inbound toward Battle Creek Airport (BTL) until instructed to do so by Kalamazoo Approach. (To BTL; 230° / 28 NM)

Stay alert for other aircraft converging at Charlotte.

Caution: Class C Airspace 6 NM northeast beginning at 2100 feet MSL.

If instructions to continue inbound have not been received or traffic volume requires holding, follow the holding procedure as depicted in the *I-69 Hold graphic*. All aircraft should fly left turns at 3,500 feet MSL.

Stay alert for other aircraft in the Interstate 69 Hold or converging over Charlotte.

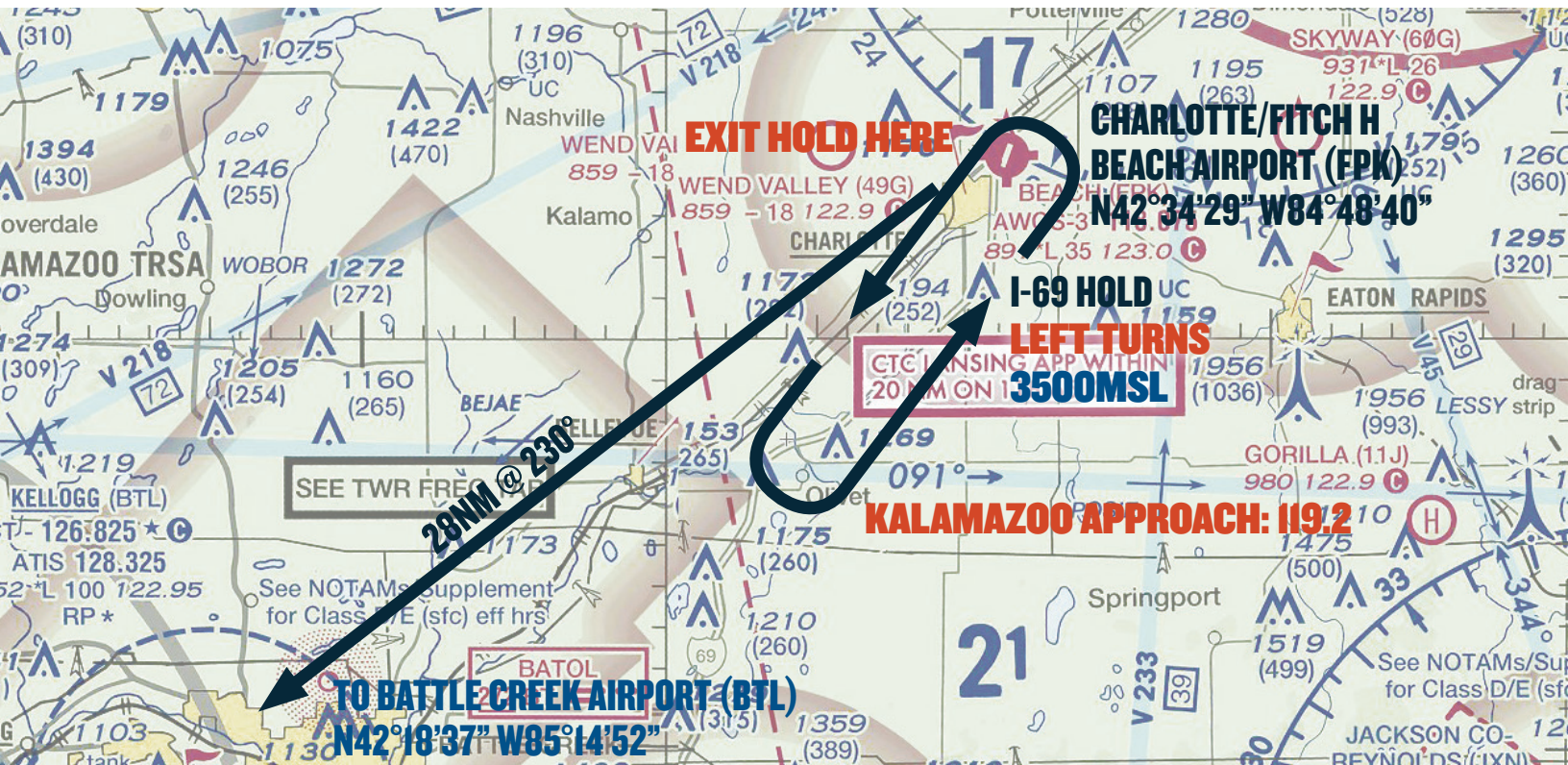
When holding is no longer required, aircraft should complete the hold and return over Charlotte and continue inbound. Begin descent to traffic pattern altitude at pilot's discretion once inbound toward Battle Creek Airport (BTL).

Traffic Pattern Altitude: 1950 MSL

Expect radar services to be terminated approximately 10 nautical miles from Battle Creek Airport (BTL) and to be instructed to contact Battle Creek Tower on **126.825**. Depending on wind conditions, expect a straight in approach for runway 23R or a left downwind entry for runway 5L.

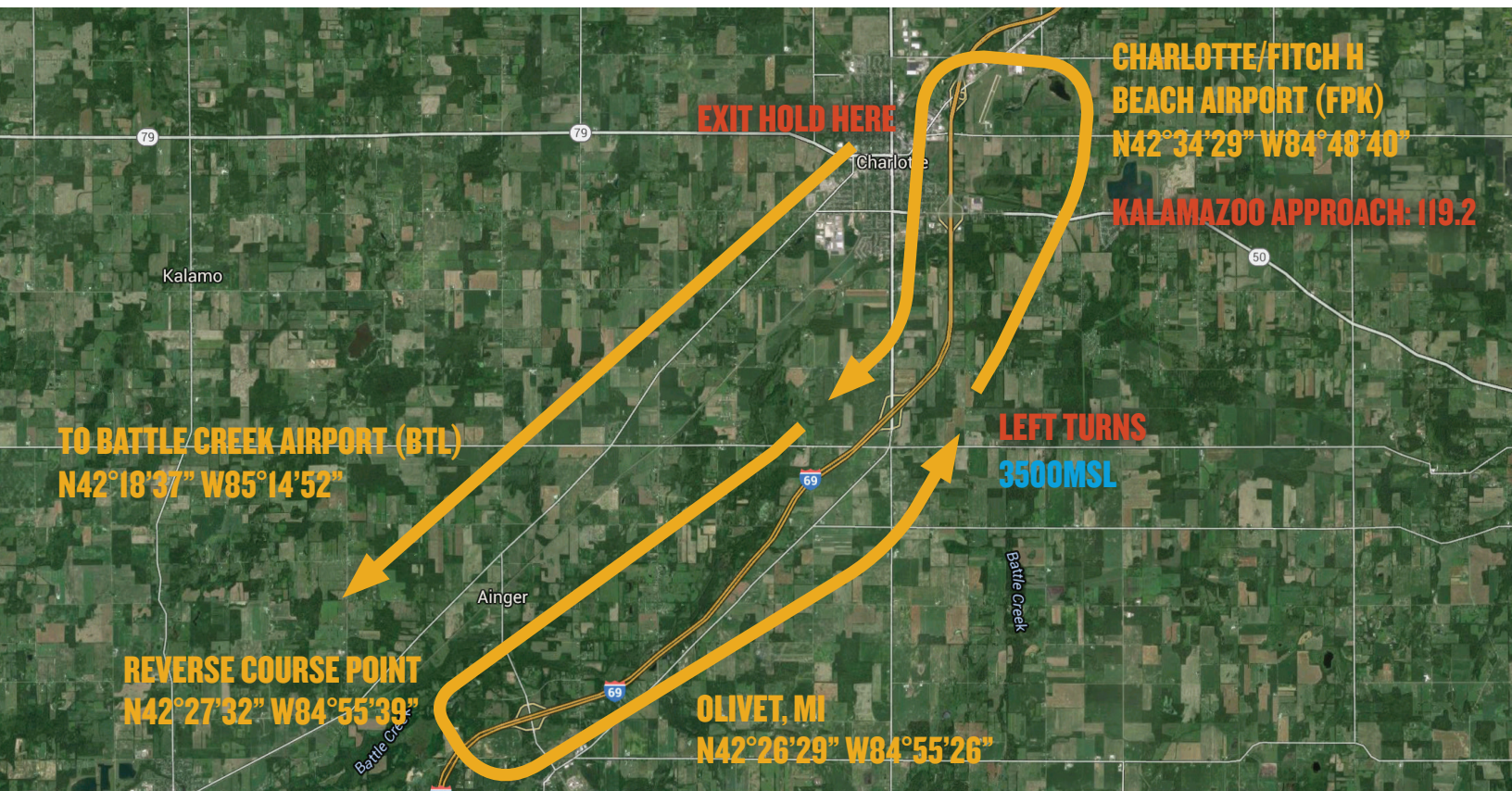
After landing, exit the runway as quickly and as safely as possible. Do not stop on the runway unless absolutely necessary. Keep moving after exiting the runway so as not to block subsequent arrivals. Follow taxi instructions and directional signs to the designated parking areas. Marshalls will direct aircraft to parking.

I-69 HOLD



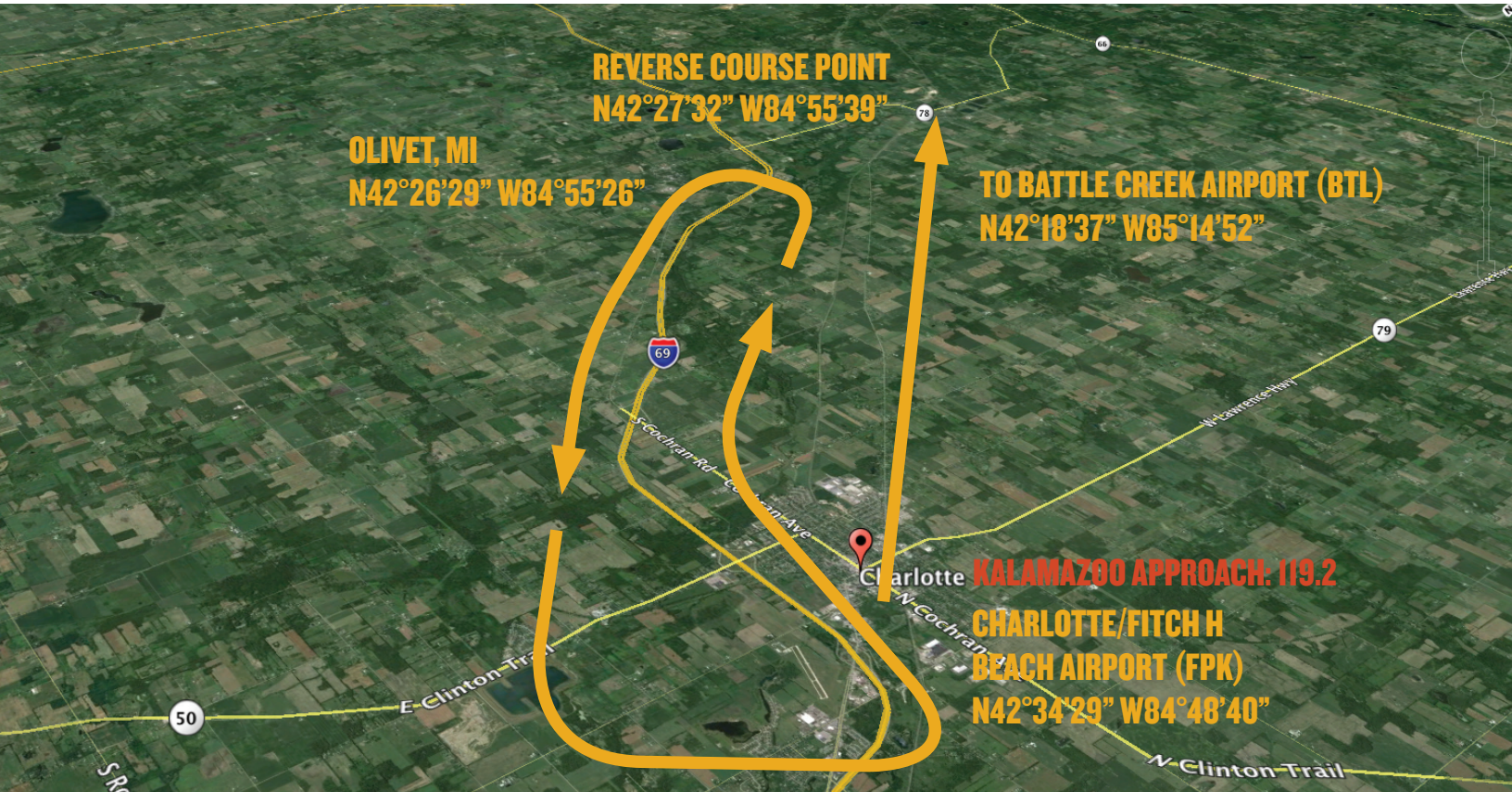
ATIS: 128.325 BTL TOWER (23R/5L): 126.825 (23L/5R): 133.325 BTL GROUND: 121.7

I-69 HOLD



ATIS: 128.325 BTL TOWER (23R/5L): 126.825 (23L/5R): 133.325 BTL GROUND: 121.7

I-69 HOLD—LOOKING SOUTHWEST



OLIVET, MI
N42°26'29" W84°55'26"

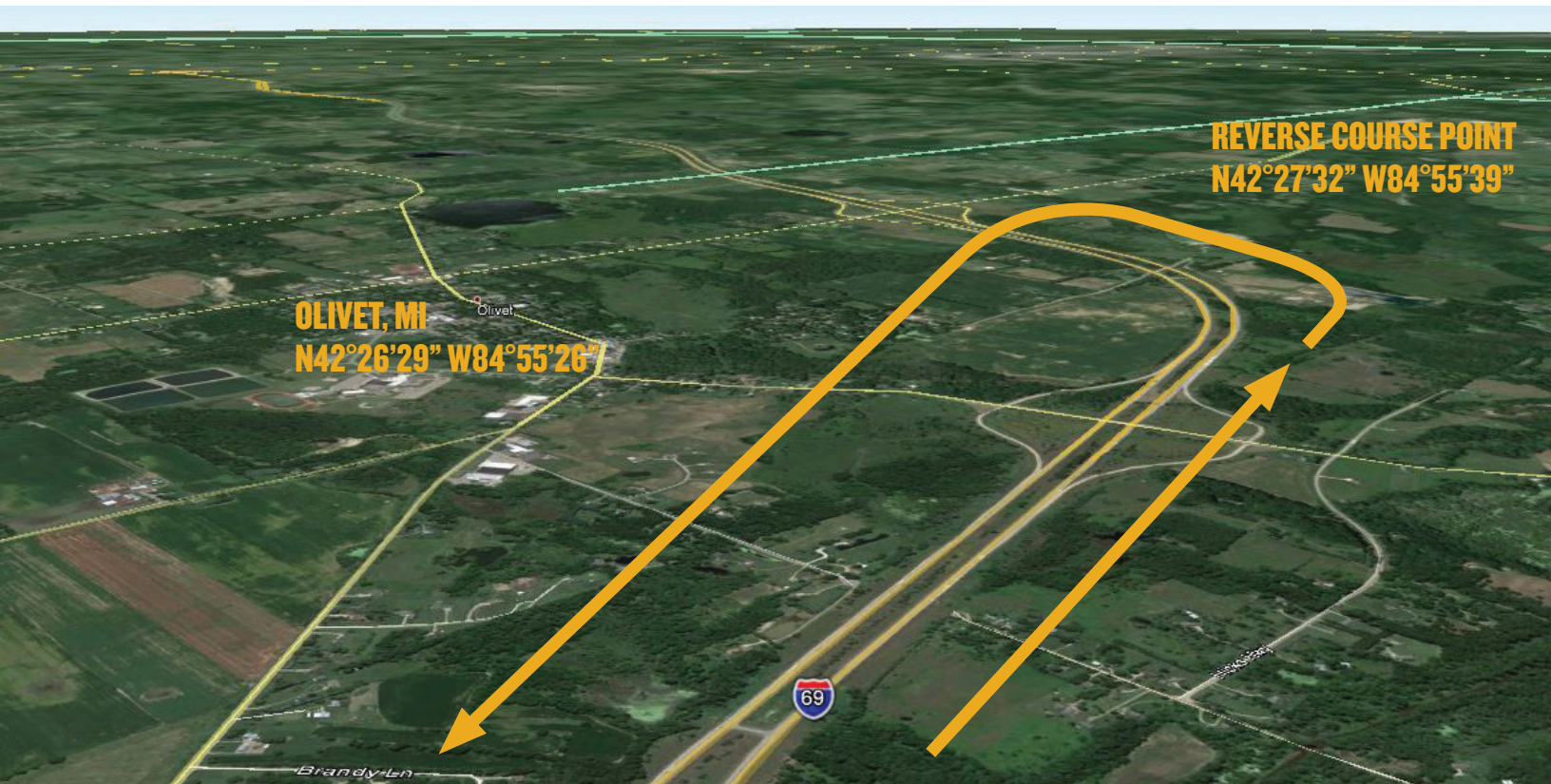
REVERSE COURSE POINT
N42°27'32" W84°55'39"

TO BATTLE CREEK AIRPORT (BTL)
N42°18'37" W85°14'52"

KALAMAZOO APPROACH: 119.2
CHARLOTTE/FITCH H
BEACH AIRPORT (FPK)
N42°34'29" W84°48'40"

ATIS: 128.325 BTL TOWER (23R/5L): 126.825 (23L/5R): 133.325 BTL GROUND: 121.7

I-69 HOLD



OLIVET, MI
N42°26'29" W84°55'26"

REVERSE COURSE POINT
N42°27'32" W84°55'39"

ATIS: 128.325 BTL TOWER (23R/5L): 126.825 (23L/5R): 133.325 BTL GROUND: 121.7

IFR DELAYS

IFR arrivals will be integrated with VFR traffic. However IFR separation requirements may cause delays when arrival rates exceed airport capacity. Pilots on an IFR flight plan should be prepared for potential holding at Battle Creek Airport (BTL). IFR flight plans to Battle Creek Airport (BTL) should be filed **at least 2 hours** prior to proposed departure time. Expect a straight in approach for 23R or 5L.

TEMPORARY BATTLE CREEK AIRPORT (BTL) CLOSURE FOR AEROBATIC DEMONSTRATION

There will be a 10-15 minute aerobatic demonstration between 12:00 Noon--1:00 PM local on Saturday, September 17, 2016 during the AOPA Fly-in. Arrivals and departures will be stopped for the duration of the demonstration. Please plan accordingly.

LOCAL TRAINING AND PRACTICE APPROACHES

Local traffic pattern, closed traffic training, and practice instrument approaches **may not** be available at Battle Creek Airport (BTL) during the AOPA Fly-In.

CAUTIONS

High density traffic during peak hours (8:00 AM-11:00 AM) of Fly-In at Battle Creek Airport (BTL).

Class D Airspace; Kalamazoo International Airport (AZO); 3400 feet MSL, 9 NM southwest of Battle Creek Airport (BTL)

Class C Airspace; Capital Region International Airport (LAN); 4900 feet MSL; 31 NM northeast of Battle Creek Airport (BTL)

Class C Airspace; Gerald Ford International Airport (GRR); 4800 feet MSL; 27 NM northwest of Battle Creek Airport (BTL)

FREQUENCY INFORMATION

ENROUTE FREQUENCIES

Kalamazoo Approach—Arriving Over “Coldwater”	123.8
Kalamazoo Approach—Arriving Over Gun Lake	119.2
Kalamazoo Approach—Arriving Over “Charlotte”	119.2

BATTLE CREEK AIRPORT (BTL) FREQUENCIES

Battle Creek ATIS	128.325
ATIS Telephone Number	269-964-0283
Battle Creek Tower—23R/5L	126.825
Battle Creek Tower—23L/5R	133.325
Battle Creek Ground	121.7
CTAF	126.825
UNICOM	122.95
Kalamazoo Approach/Departure	119.2

WAYPOINT INFORMATION

SPECIFIC LATITUDE/LONGITUDE COORDINATES

Arrivals Over Gun Lake

Gun Lake	N42°36'02"/W85°31'20"
Battle Creek Airport (BTL)	N42°18'37"/W85°14'52"

Arrivals Over Coldwater/Branch County Memorial Airport (OEB)

Coldwater/Branch County Memorial Airport (OEB)	N41°55'59"/W85°03'21"
Battle Creek Airport (BTL)	N42°18'37"/W85°14'52"

Arrivals Over Charlotte/Fitch H Beach Airport (FPK)

Charlotte/Fitch H Beach Airport (FPK)	N42°34'29"/W84°48'40"
Battle Creek Airport (BTL)	N42°18'37"/W85°14'52"

Union Lake Hold

Union Lake	N42°03'06"/W85°10'48"
Lehr/Kenyon/Oliverda Lakes	N42°02'47"/W85°15'11"
Union City	N42°04'00"/W85°08'10"

I-69 Hold

Charlotte/Fitch H Beach Airport (FPK)	N42°34'29"/W84°48'40"
Reverse Course Point/I-69 Hold	N42°27'32"/W84°55'39"
Olivet, MI	N42°26'29"/W84°55'26"

Gun Lake Hold

Gun Lake	N42°36'02"/W85°31'20"
----------	-----------------------

GENERAL INFORMATION

W K KELLOGG (BATTLE CREEK) AIRPORT (BTL)



ATIS: 128.325 BTL TOWER (23R/5L): 126.825 (23L/5R): 133.325 BTL GROUND: 121.7

PARKING AREAS

- When operating in the parking areas, pilots are encouraged to be extra alert for taxiing aircraft, aircraft with engine(s) running, and vehicle/pedestrian traffic.
- Marshalls will be assisting aircraft to and from parking areas and run-up areas.
- For safety reasons, high RPM engine running is prohibited in designated parking areas. For departure, it is recommended that pilots conduct their run-up procedures in queue if practical.
- Please review the parking map prior to landing and departure.

VEHICULAR TRAFFIC

- Vehicles are not allowed on ramps except those belonging to airport operators and tenants, and exhibitors participating in the AOPA Battle Creek Airport Fly-In.

PRE-FLIGHT PLANNING

- Please ensure that you have reviewed the special flight information, departure procedures, and temporary taxi procedures prior to engine start.
- High traffic density is expected Saturday morning and afternoon. Consider arriving during off-peak hours.

DEPARTURE PROCEDURES

BATTLE CREEK AIRPORT (BTL)

IFR DEPARTURES

Follow marshalls instructions to taxi to the nearest designated IFR departure holding area. IFR departures should obtain a clearance from Battle Creek Ground on **121.7** when ready for departure. **DO NOT CONTACT BATTLE CREEK GROUND FOR A CLEARANCE UNTIL YOU ARE READY TO DEPART.**

VFR DEPARTURES

VFR Flight Following (VFR Traffic Advisories): ATC will do everything possible to provide flight following to those requesting the service once aircraft are beyond 10 NM from Battle Creek Airport (BTL). Please do not make the request until at least 10 NM from BTL. See the flight following frequency graphic for which frequency to contact based on departure heading.

Prior to start-up: Please ensure that you have reviewed the special flight information, departure procedures, and temporary taxi procedures prior to engine start. Check ATIS on **128.325**.

Engine start: Locate a marshaller to monitor engine start.

Taxi: Follow instructions from marshalls to taxi for departure runway.

Run-up: If practical, it is recommended that you conduct your run-up while in queue for departure. Please consider propeller blast during your run-up.

MONITOR Battle Creek Ground on **121.7** during taxi. Switch to and **MONITOR** Battle Creek Tower on **126.825** when number 3 for departure. Be prepared for immediate departure when number one.

Departure

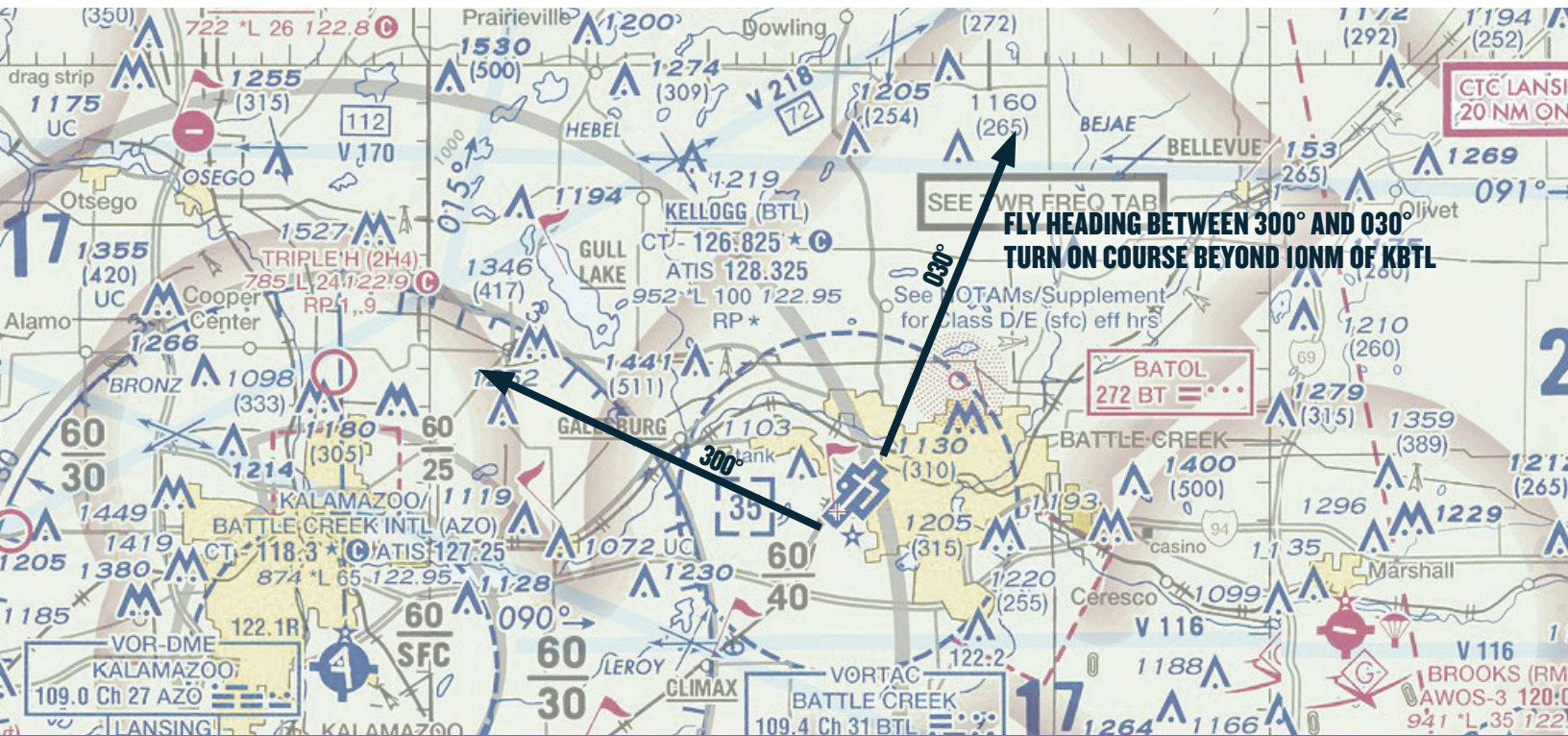
Runway 5L/23R: Fly heading between 300° and 030°. Turn on course when beyond 10 NM from Battle Creek Airport (BTL).

Runway 5R/23L: Fly heading between 060° and 210°. Turn on course when beyond 10 NM from Battle Creek Airport (BTL).

Caution: Kalamazoo International Airport (AZO) Class D Airspace; 9 NM southwest of Battle Creek Airport (BTL)

DEPARTURE PROCEDURES

RUNWAY 5L OR 23R IN USE



ATIS: 128.325 BTL TOWER (23R/5L): 126.825 (23L/5R): 133.325 BTL GROUND: 121.7

DEPARTURE PROCEDURES

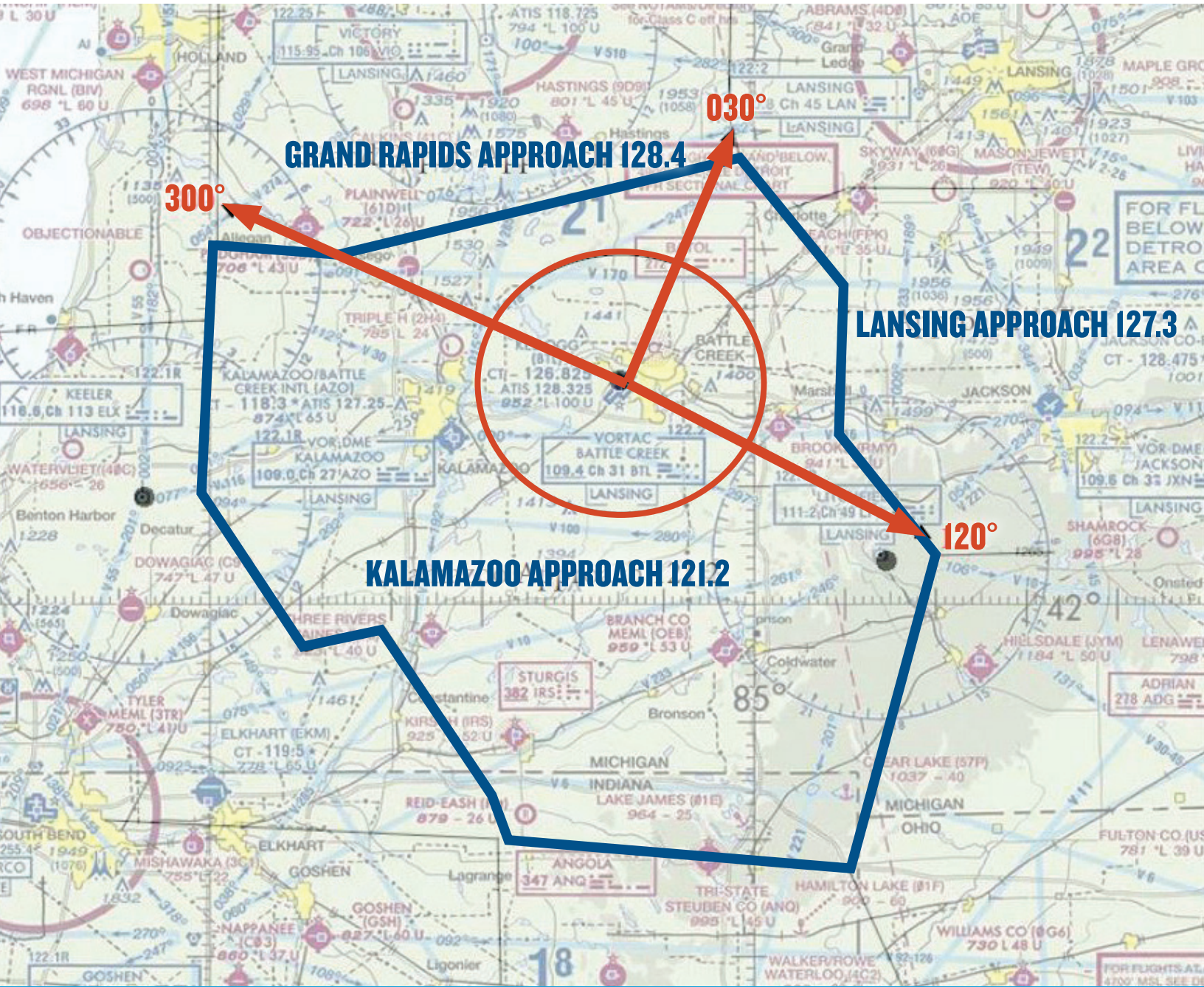
RUNWAY 5R OR 23L IN USE



ATIS: 128.325 BTL TOWER (23R/5L): 126.825 (23L/5R): 133.325 BTL GROUND: 121.7

FLIGHT FOLLOWING FREQUENCIES

BEYOND 10 NM



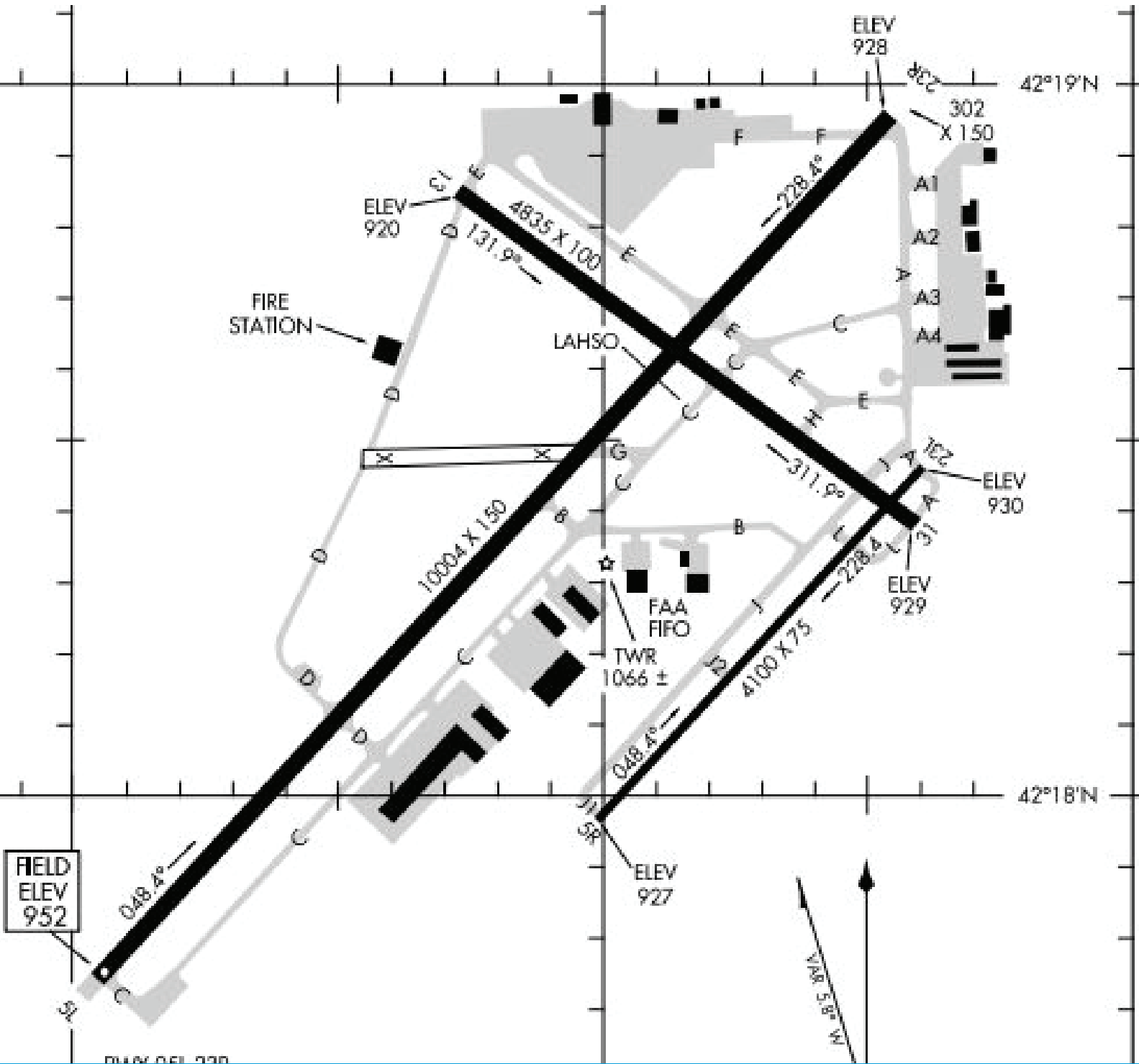
ATIS: 128.325

BTL TOWER (23R/5L): 126.825 (23L/5R): 133.325

BTL GROUND: 121.7

AIRPORT DIAGRAM

W K KELLOGG (BATTLE CREEK) AIRPORT (KBTL)



ATIS: 128.325 BTL TOWER (23R/5L): 126.825 (23L/5R): 133.325 BTL GROUND: 121.7