

AOPA FLY-IN AT THE BUCKEYE AIR FAIR

SPECIAL AIR TRAFFIC PROCEDURES

(KBXK) Buckeye Municipal Airport / Buckeye, AZ

FEBRUARY 14-16, 2025

This is preliminary draft information, subject to additions and changes. Please check back for current information closer to the event

Special air traffic procedures to manage increased traffic, enhance safety, and minimize delays will be in effect each day from **7:00 AM to 7:00 PM**. **Night Operations are NOT authorized, and the airport will be NOTAM'd closed from sunrise to sunset (except for airshow and emergency operations).**

TEMPORARY VFR PROCEDURES

Specific procedures contained within this NOTAM may be revised at the time of the event. Pilots are urged to review all applicable NOTAMs and arrival/departure procedures before conducting a flight to Buckeye. Users are encouraged to check NOTAMs frequently to verify they possess the most current revisions. This information does not supersede restrictions pertaining to the use of airspace contained in FDC NOTAMS.

*****Advisory Tower will be in Operation Friday, Saturday and Sunday 7:00 AM – 7:00 PM*****

AIRPORT CLOSURE

****** The airport will be closed daily from Sunset to Sunrise for normal operations. ******

******The airport will also be closed during scheduled AIRSHOW times******

A TFR WILL BE IN EFFECT DURING PUBLISHED AIRSHOW TIMES – CHECK NOTAMs

Tentative Airshow Times – Subject to Change

- **2/14/25** **12:00 PM to 1:00 PM and 5:00 PM to 7:00 PM**
- **2/15/25** **12:00 PM to 1:30 PM and 4:30 PM to close of show**
- **2/16/25** **1:00 PM to 3:00 PM**

Fly-In attendees wishing to depart on **2/15/25 MUST depart before the evening airshow**. The airport will close during the published airshow times, a TFR will be in effect. **CHECK NOTAMs**

Please plan ahead!

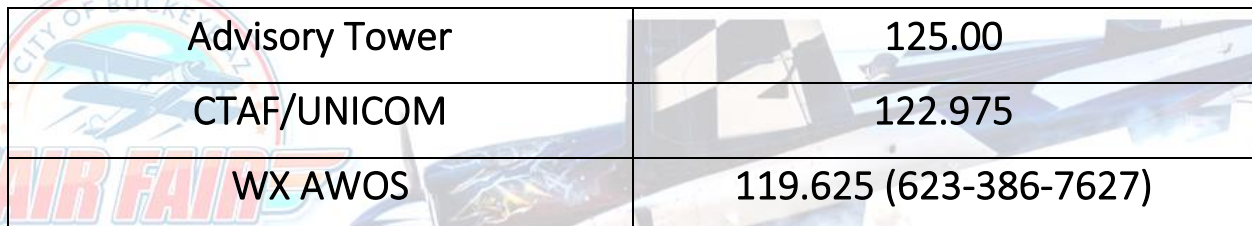
PREFLIGHT PLANNING

Pilots are asked to review all applicable NOTAMs and arrival/departure procedures prior to conducting a flight to Buckeye. IFR flight plans should be filed at least 6 hours prior to the proposed departure time.

BUCKEYE AIRPORT FREQUENCIES

******THE ADVISORY TOWER WILL BE IN USE 7 AM – 7 PM FRI / SAT / SUN******

Arrivals & Departures on FRI/SAT/SUN Should Use the ADVISORY TOWER



Advisory Tower	125.00
CTAF/UNICOM	122.975
WX AWOS	119.625 (623-386-7627)

LOCAL TRAINING AND PRACTICE APPROACHES

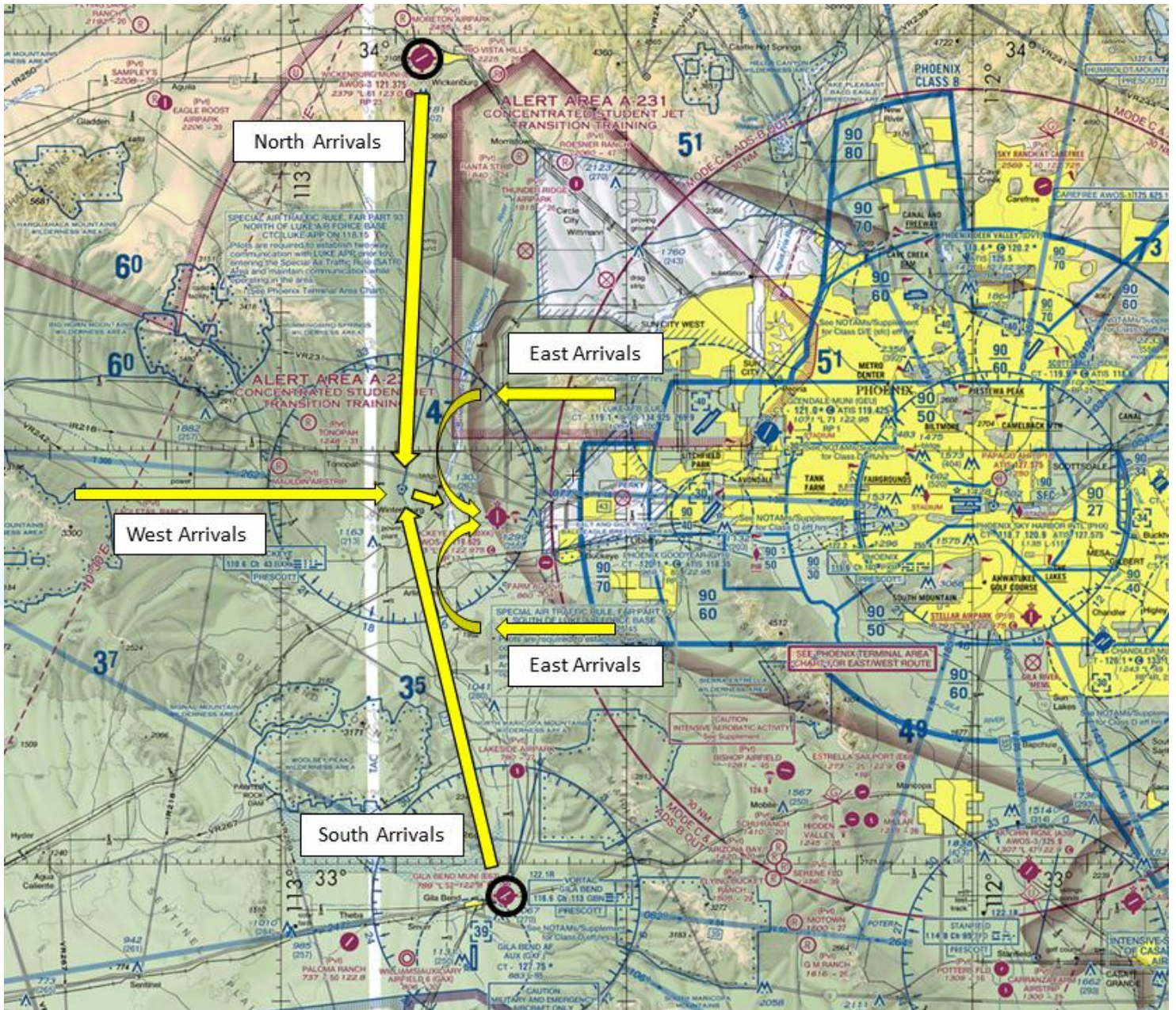
USE EXTREME CAUTION: SPECIAL AIR TRAFFIC RULE FAR PART 93 NORTH AND SOUTH OF LUKE AIR FORCE BASE. CTC LUKE APP ON 118.15 (NORTH) AND 125.45 (SOUTH)

Pilots are required to establish two-way radio communication with LUKE APPROACH prior to entering the Special Air Traffic Rule (SATR) Area and maintain communication while operating in this area. (See Phoenix Terminal Area Chart)

AOPA FLY-IN AT THE BUCKEYE AIR FAIR / 2025 PILOT INFORMATION

The local traffic pattern will be closed to flight training and touch and goes will not be available during the times when the special air traffic procedures are in effect.

VFR ARRIVALS OVERVIEW

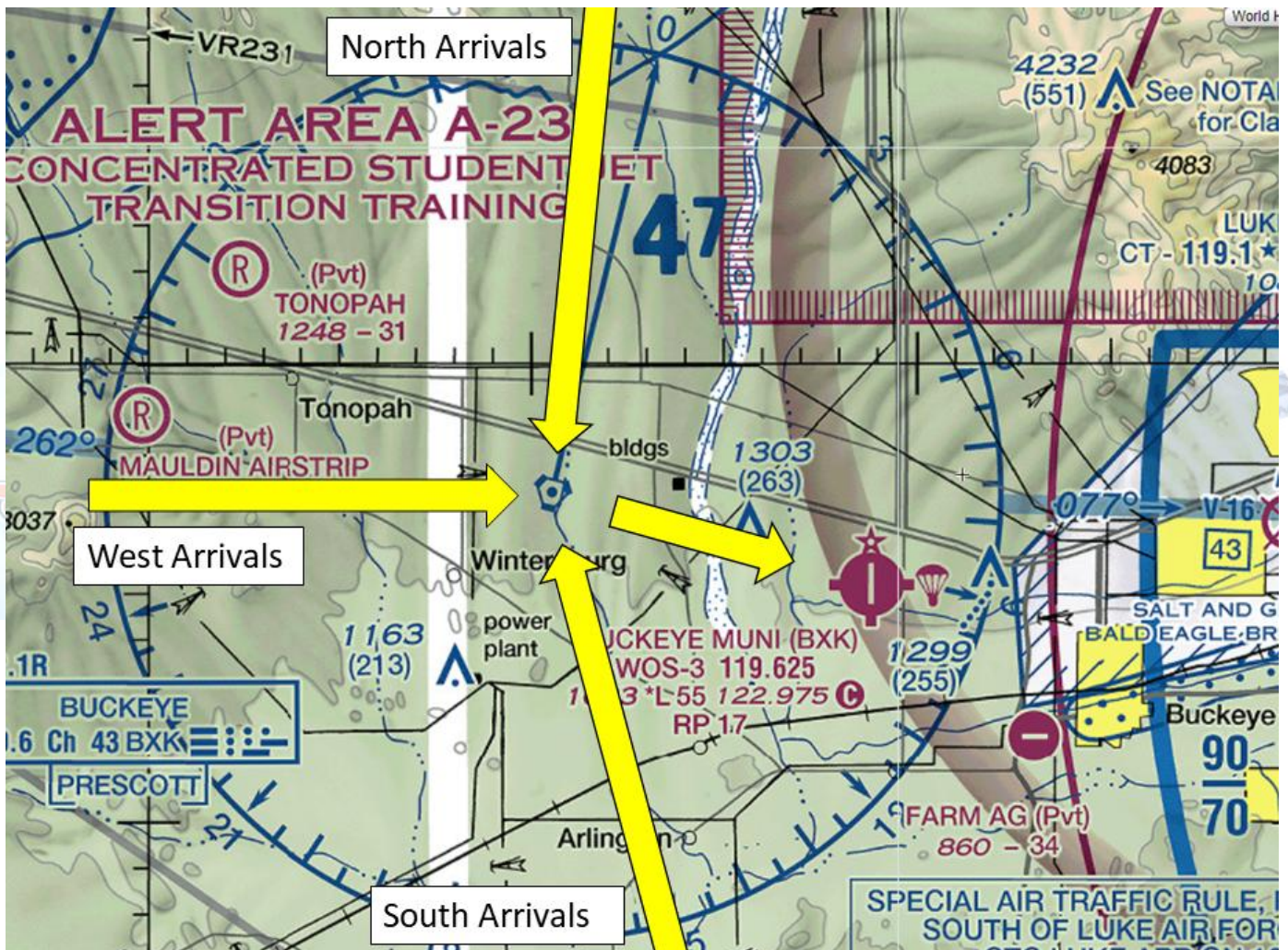


All aircraft are asked to maneuver toward the VOR and **PLAN TO arrive at KBXK from the West**. KBXK airport is 7.1 NM from the BXX VOR on the 091° radial. Plan to make a 90° entry

AOPA FLY-IN AT THE BUCKEYE AIR FAIR / 2025 PILOT INFORMATION

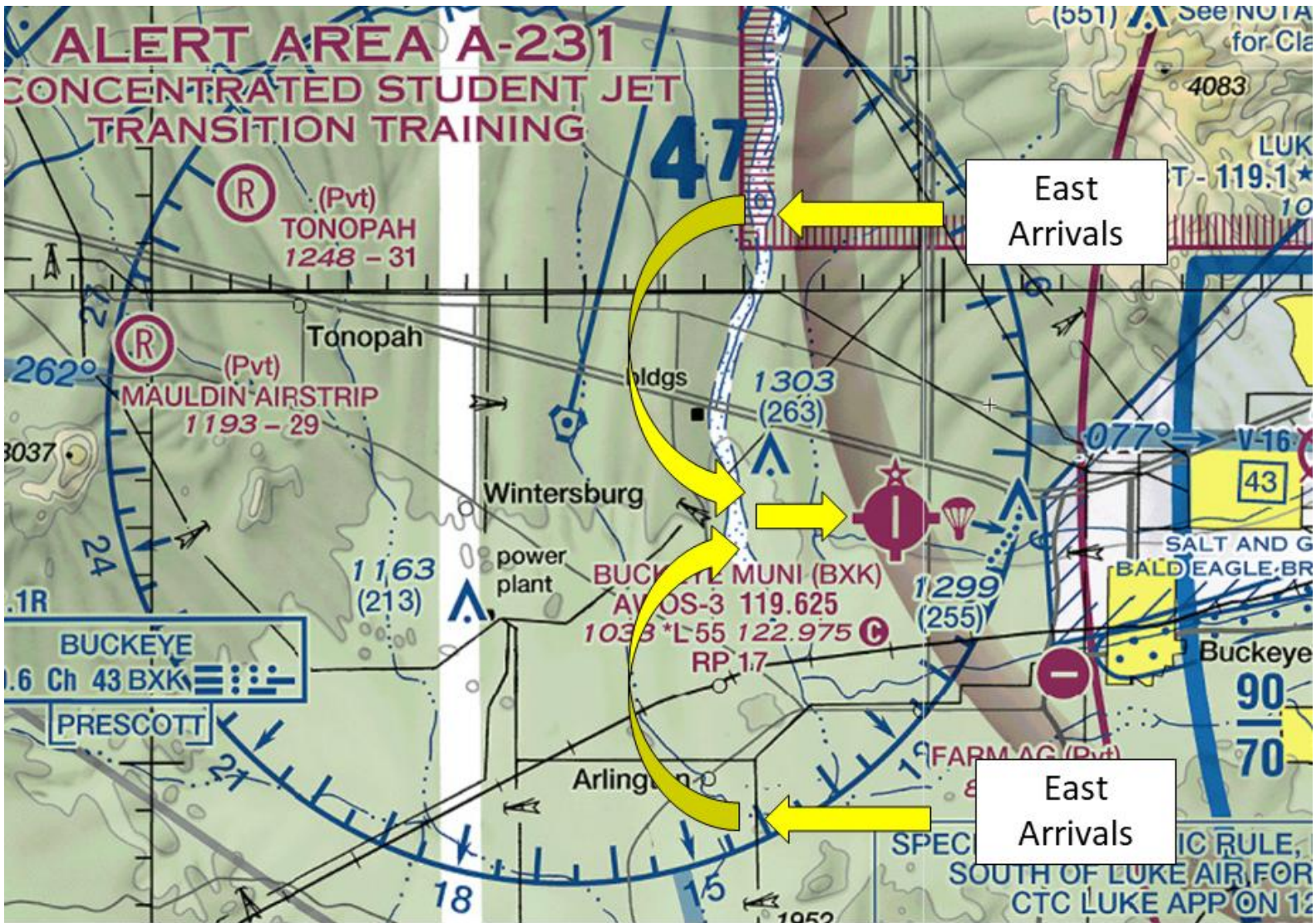
to the downwind leg. The advisory tower (125.00) will instruct you to “make a Left (or Right) turn to enter the Downwind.”

DO NOT ENTER THE BUCKEYE TRAFFIC PATTERN UNLESS CONTACT HAS BEEN ESTABLISHED WITH THE ADVISORY TOWER.



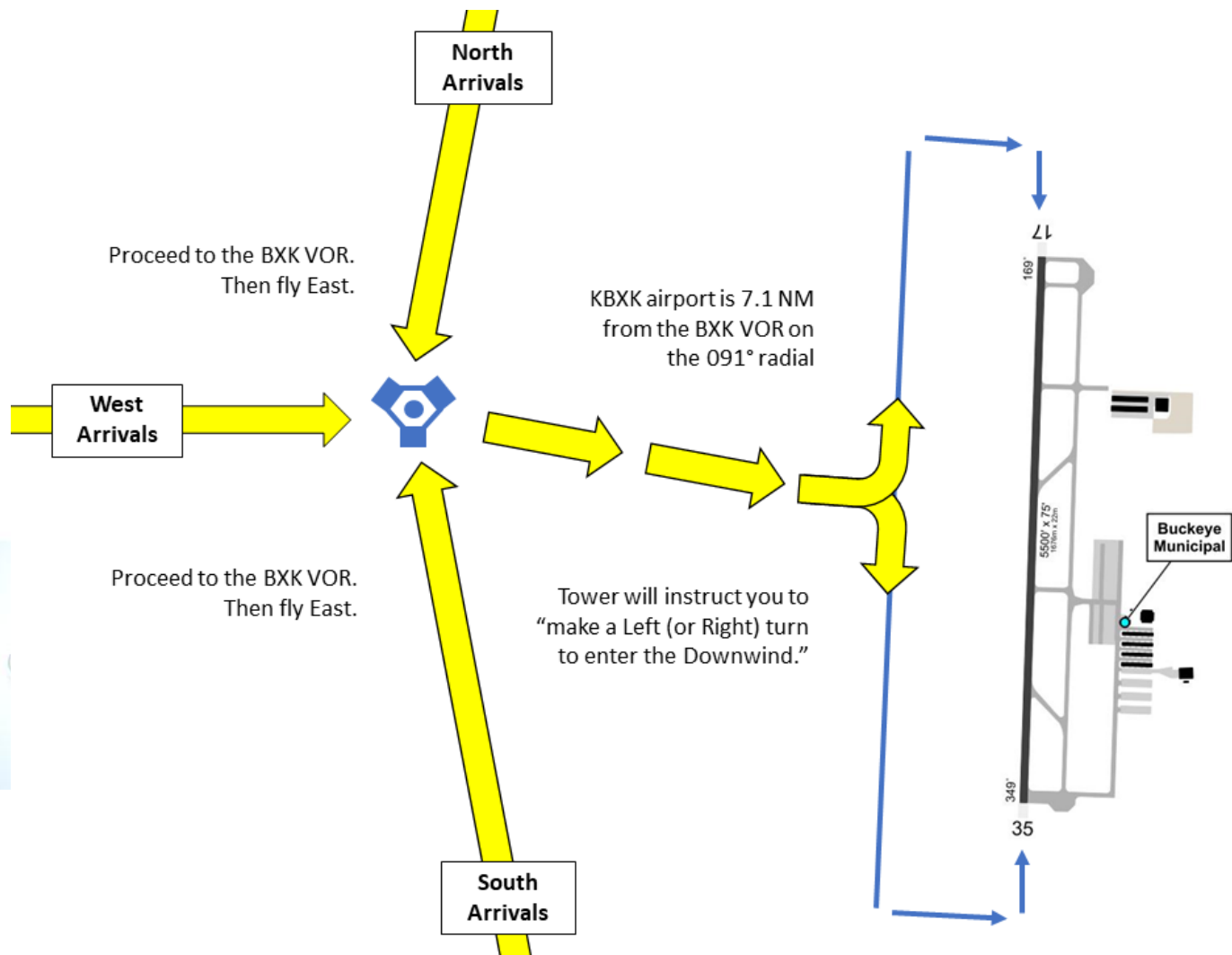
AOPA FLY-IN AT THE BUCKEYE AIR FAIR / 2025 PILOT INFORMATION

See Page 8 for East Arrival Instructions



AOPA FLY-IN AT THE BUCKEYE AIR FAIR / 2025 PILOT INFORMATION

VFR ARRIVALS FROM THE NORTH, SOUTH AND WEST



Arrivals from the North:

This arrival procedure begins over Wickenburg Airport (E25). Fly a course direct to the BXK VOR. Join the arrival anywhere along the route. Proceed south and plan to arrive over the Buckeye VOR at or below 3,500 feet MSL.

****** Caution: Stay alert for converging traffic. ******

After crossing the VOR turn East. **Contact KBXK Advisory Tower on 125.00 when able.** Plan to enter the downwind mid-field at a 90° angle, you will be instructed to turn left or right to join the traffic pattern.

AOPA FLY-IN AT THE BUCKEYE AIR FAIR / 2025 PILOT INFORMATION

Arrivals from the South

This arrival procedure begins over Gila Bend Airport (E63). Join the arrival anywhere along the route. Proceed North and plan to arrive over the Buckeye VOR at or below 2,500 feet MSL.

****** Caution: Stay alert for converging traffic. ******

After crossing the VOR turn East. **Contact KBXK Advisory Tower on 125.00 when able.** Plan to enter the downwind mid-field at a 90° angle you will be instructed to turn left or right to join the traffic pattern.

DO NOT ENTER THE BUCKEYE TRAFFIC PATTERN UNLESS CONTACT HAS BEEN ESTABLISHED WITH THE ADVISORY TOWER.

Arrivals from the West:

Fly a course "Direct To" the Buckeye (BXK) VOR. Proceed East and plan to arrive over the Buckeye VOR at or below 3,500 feet MSL. **Contact advisory tower frequency on 125.00 in the vicinity of the VOR.**

****** Caution: Stay alert for converging traffic. ******

Plan to enter the downwind mid-field at a 90° angle you will be instructed to turn left or right to join the traffic pattern.

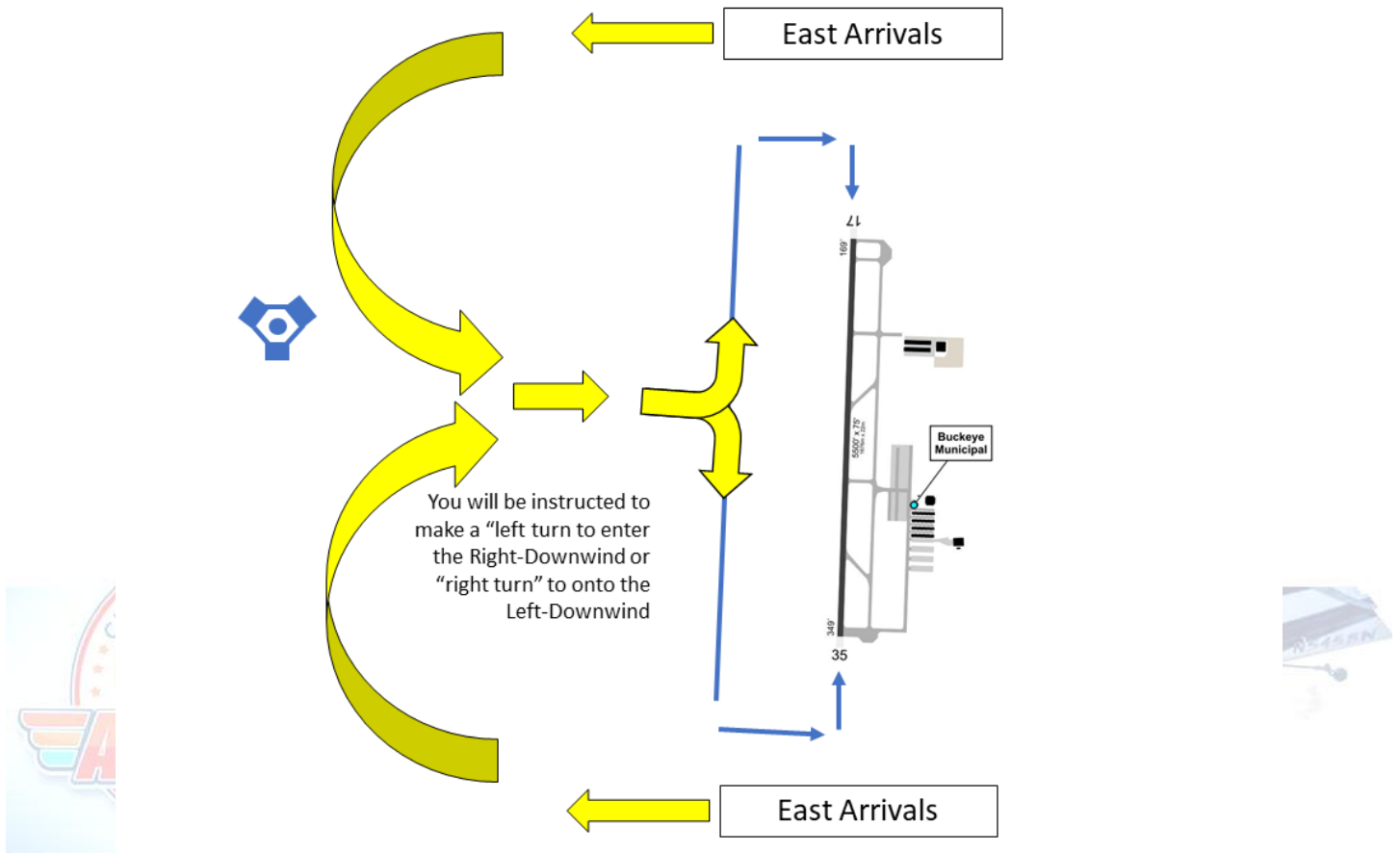
DO NOT ENTER THE BUCKEYE TRAFFIC PATTERN UNLESS CONTACT HAS BEEN ESTABLISHED WITH THE ADVISORY TOWER.

After Landing:

After landing, do not stop on the runway unless necessary. Exit the runway as quickly and as safely as possible at the first available taxiway. Continue far enough forward so as not to block subsequent arrivals.

Follow instructions from Buckeye Advisory Tower. Marshalls will guide aircraft to a parking space once you have arrived in the non-movement/aircraft parking area. If you are camping, have parking signage visible in the windscreen for marshalls (C for Camping / P for Parking). The advisory tower may also ask for parking requests. *You may print the C or P from this packet, see the information below.*

VFR ARRIVALS FROM THE EAST



Arrivals from the East:

Circumnavigate the Buckeye Airport (KBXK) to the West. Contact Advisory tower frequency on 125.00 when able and advise your current position.

Plan to enter the downwind mid-field at a 90° angle you will be instructed to turn left or right to join the traffic pattern.

****** Caution: Stay alert for converging traffic. ******

DO NOT ENTER THE BUCKEYE TRAFFIC PATTERN UNLESS CONTACT HAS BEEN ESTABLISHED WITH THE ADVISORY TOWER.

After Landing:

After landing, do not stop on the runway unless necessary. Exit the runway as quickly and as safely as possible at the first available taxiway. Continue far enough forward so as not to block subsequent arrivals.

Follow instructions from Buckeye Advisory Tower. Marshalls will guide aircraft to a parking space once you have arrived in the non-movement/aircraft parking area. Have parking signage visible in the windscreen.

BUCKEYE AIRPORT GENERAL INFORMATION

PARKING AREAS

When operating in the parking areas, pilots are encouraged to be extra alert for taxiing aircraft, aircraft with engine(s) running, and vehicle/pedestrian traffic. Marshalls will be assisting aircraft to and from parking areas and run-up areas. For safety reasons, high RPM engine running is prohibited in designated parking areas. For departure, it is recommended that pilots conduct their run-up procedures in queue if practical. Please review the parking map below before landing and departing.

The attendee aircraft parking and camping areas at BXK will be on sand/dirt or compacted asphalt millings. The parking areas are level, but we remind you that these areas are subject to heavy dust. Water trucks will be dropping water before and during the event to minimize this. Please use caution when taxiing and NO Runups until on a paved taxi lane. There is NO parking available on the main ramp, and there is limited parking for heavy and low-profile aircraft on designated hard surface areas. This area is first come first served, and NO reservations are accepted.

VEHICULAR TRAFFIC

Vehicles are not allowed on ramps except those belonging to airport operators and tenants.

PARKING AND SERVICE DETAILS

Fuel/oil order form slips will be made available at the time your aircraft is parked. If you need either, please make sure to request at that time. Orders made later might delay your departure. Credit card information will be requested at the time the order is placed. Order slips will be attached to the propeller. If you are uncomfortable providing credit card information on the ramp, you can provide the information directly to the line service personnel.

****Self-serve fueling will not be available during the event.***

On-Airport Maintenance

Aerosecure Maintenance and Avionics will be available during the event for any maintenance issues that you may need. They are located on the airport, and have mobile-ready services (battery, strut servicing, etc.). If an issue arises, please call Aerosecure directly at 602-284-8278.

CHOCKS AND TIE DOWNS

Chocks and/or tie-downs are required and not provided. **Please bring your own.**

AOPA FLY-IN AT THE BUCKEYE AIR FAIR / 2025 PILOT INFORMATION

CAMPING

Camping is allowed and encouraged. Pitch a tent under the wing of your aircraft and enjoy the weekend under the stars. See the [AOPA website](#) for more information. If you are camping at your aircraft, please print the large C provided in the camping material and place it in your windshield so that marshallsers can see it upon your arrival.

BUCKEYE AIRPORT DEPARTURE PROCEDURES

IFR DEPARTURES

All IFR departures should follow normal procedures and obtain their clearance through Clearance Delivery. Contact Luke Approach at **602-856-7361**. If Luke is unavailable, contact Phoenix Approach at **602-306-2565**.

AOPA Note: Aircraft intending to depart IFR should consider requesting either a VFR climb or depart VFR and pick up an IFR clearance enroute if practical to avoid departure delays.

VFR DEPARTURES

Prior to start-up -- Please ensure that you have reviewed the special flight information, departure procedures, and temporary taxi procedures before engine start. Check AWOS on **119.625**.

Engine Start/Run-up – If practical, it is recommended that you conduct your run-up while in queue for departure. Please consider propeller blast during your run-up.

Taxi – Follow instructions from marshallsers and **MONITOR** CTAF on **122.975** and contact **ADVISORY TOWER** on **125.00** when number one for departure.

Departure – Pilots are likely to get instructions to fly Runway heading and proceed on course after climbing to 1000 feet.

DEPARTING WHEN ADVISORY TOWER IS UNAVAILABLE

Pilots should broadcast their location and intentions before any movement on the CTAF **122.975**

Stay alert while taxiing for aircraft parked on taxiways or other non-standard operations during the AOPA event.

BUCKEYE AIRPORT INFORMATION:

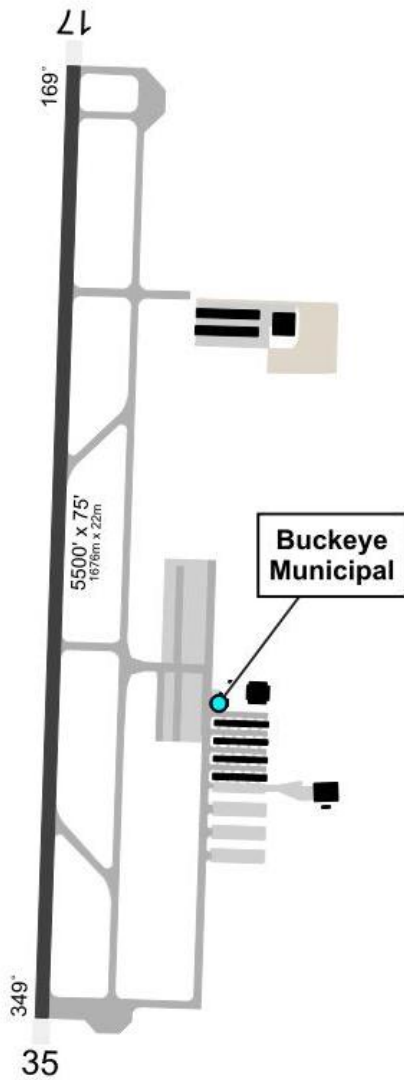
Traffic Pattern Altitude	976' AGL
Direction of traffic	Right: 17 / Left: 35
Runway	5500' X 75' asphalt, good condition
Lighting	MIRL Rwy 17/35
Fuel	100LL Low-Lead, Jet A1 / Phone: 623-349-6880
Weather	623-386-7627 (AWOS-3)
Clearance Delivery	Luke Approach at 623-856-7361. If unable, Phoenix Approach at 602-306-2565.
Fuel	Follow Procedures Outlined in this Packet



ADVISORY TOWER *125.00 - 7 AM to 7 PM Friday, Saturday, and Sunday of the event.*



AOPA FLY-IN AT THE BUCKEYE AIR FAIR / 2025 PILOT INFORMATION





P



