

VORTAC LAX <b>113.6</b> Chan 83	APP CRS <b>135°</b>	Rwy Idg THRE <b>85</b> Apt Elev <b>103</b>
---------------------------------------	------------------------	--

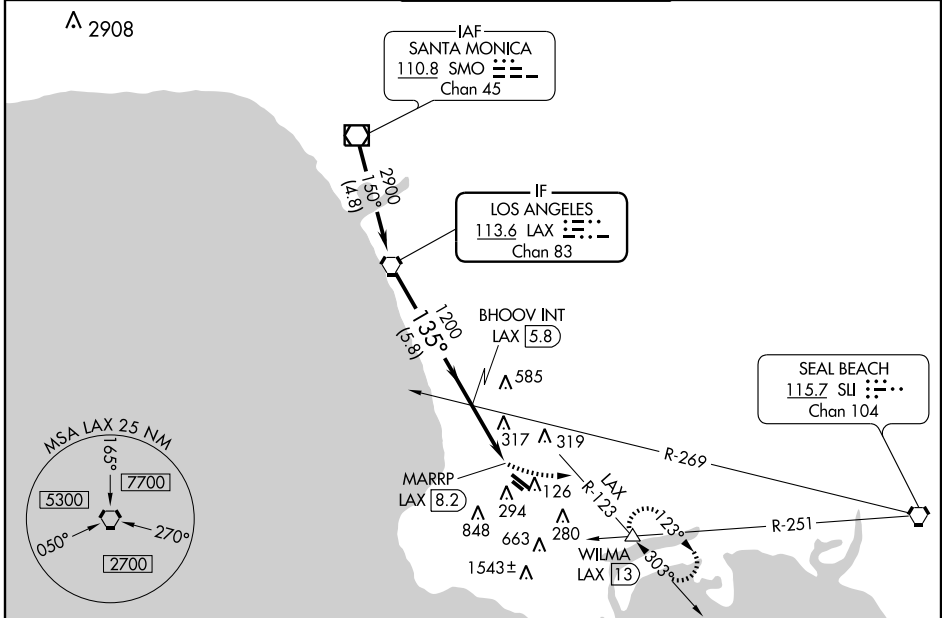
# VOR RWY 11L

TORRANCE/ZAMPERINI FIELD (TOA)

**⚠** When local altimeter setting not received, except for operators with approved weather reporting service, use Los Angeles Intl altimeter setting and increase all MDA 40 feet. Circling NA southwest of Rwy 11R-29L. Visibility reduction by helicopters NA.

**MISSED APPROACH:** Climbing left turn to 3000 on heading 075° and on LAX VORTAC R-123 to WILMA INT/13 DME and hold, continue climb-in-hold to 3000.

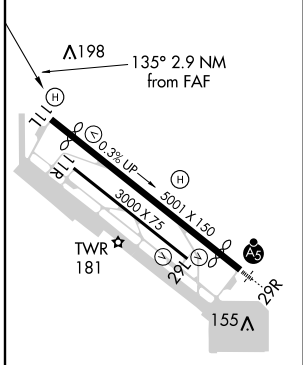
ATIS <b>125.6</b>	SOCAL APP CON <b>124.3 363.2</b> (Rwys 11L, 11R) <b>127.2 269.6</b> (Rwys 29L, 29R)	TORRANCE TOWER* <b>135.6 257.8</b> (NORTH) <b>124.0</b> (CTAF) <b>0 257.8</b> (SOUTH)	GND CON <b>120.9</b>	UNICOM <b>122.95</b>
----------------------	---	---	-------------------------	-------------------------



SW-3, 08 MAR 2012 to 05 APR 2012

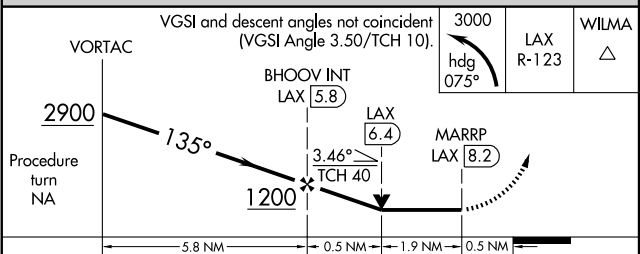
SW-3, 08 MAR 2012 to 05 APR 2012

ELEV 103	THRE 85
----------	---------



REIL Rwy 29L  
MIRL Rwys 11L-29R and 11R-29L

FAF to MAP 2.4 NM					
Knots	60	90	120	150	180
Min:Sec	2:24	1:36	1:12	0:58	0:48



CATEGORY	A	B	C	D
S-11L	980-1¼	895 (900-1¼)		NA
CIRCLING	980-1¼	877 (900-1¼)		NA