



No warranty is made by the State/Territory/National Guard Bureau as to the accuracy, reliability, or completeness of these data for individual use or aggregate use with other data. This map is a "living document," in that it is intended to change as new data become available and are incorporated into the Enterprise GIS database.

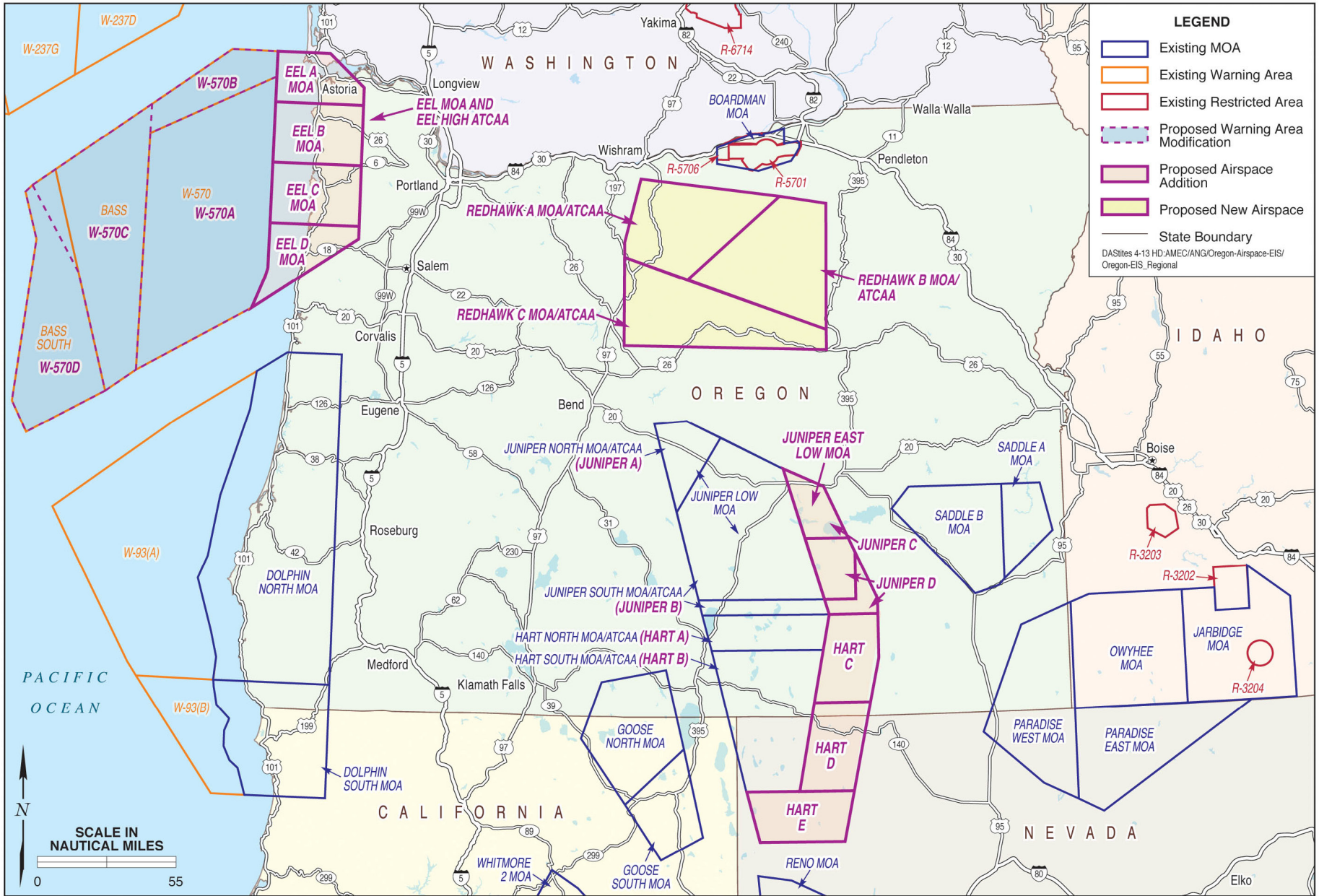


Figure 1
Regional Location Map
Proposed Airspace Establishment and Modification

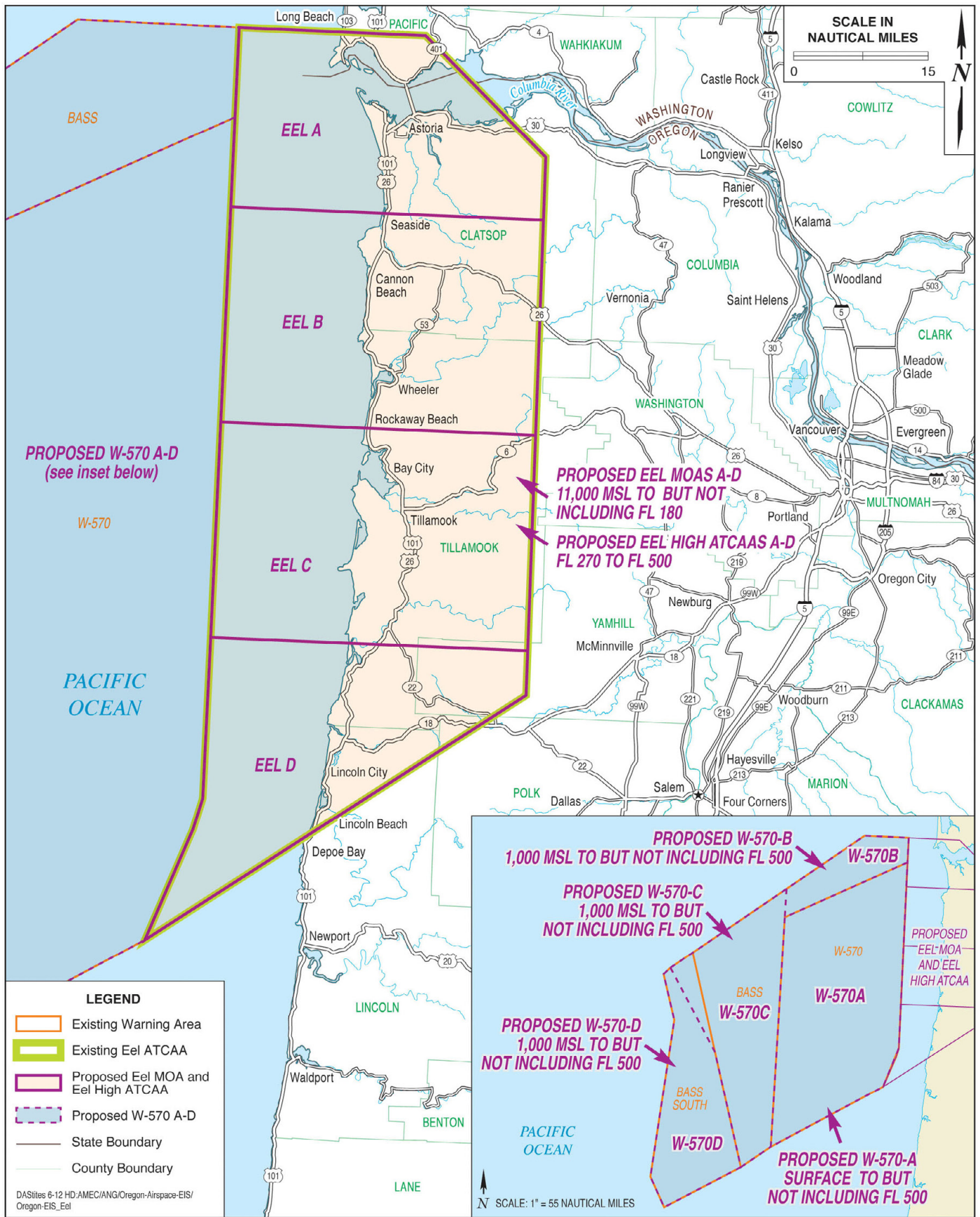
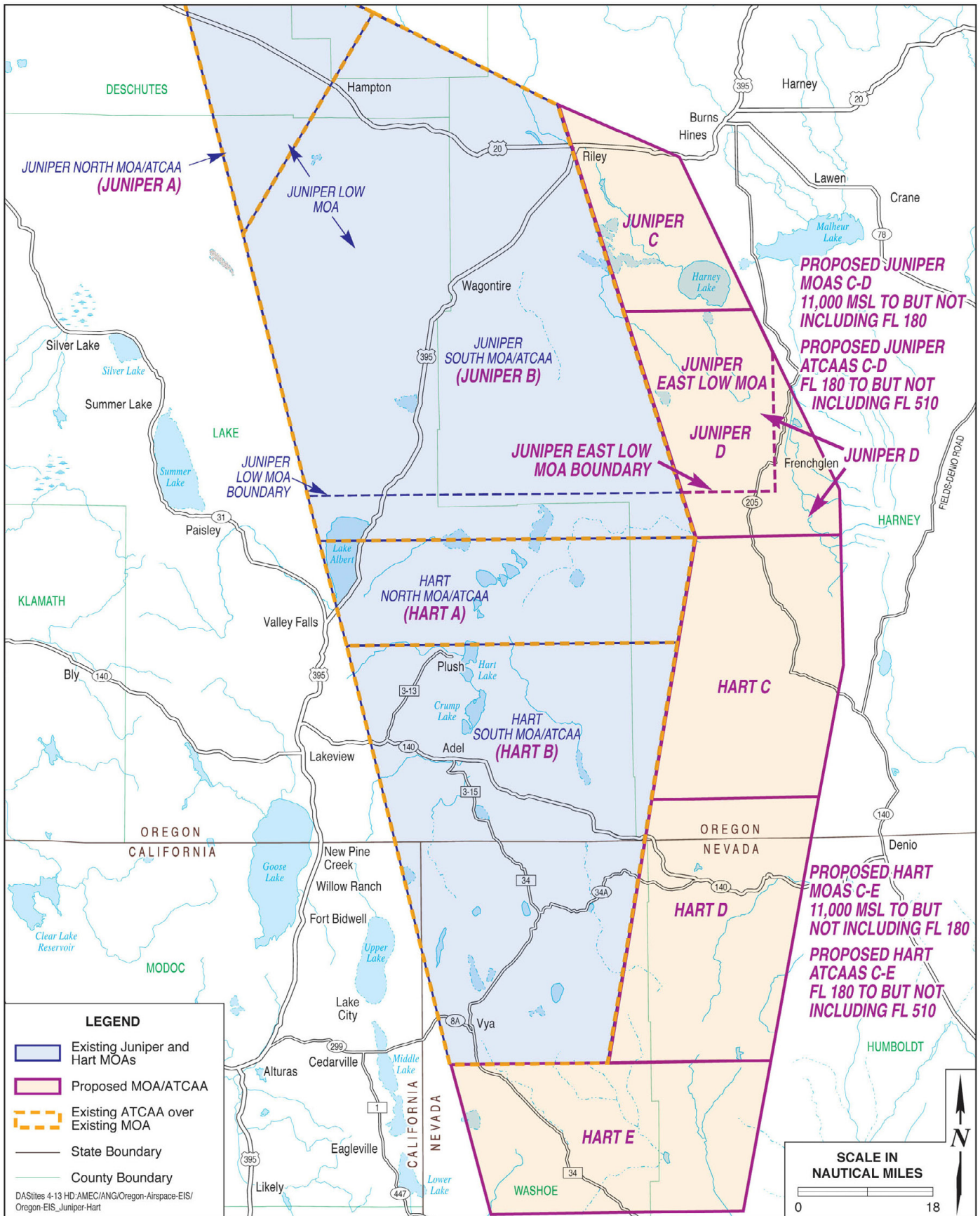


Figure 2
Proposed Eel ATCAA and W-570 Modifications
Proposed Airspace Establishment and Modification



No warranty is made by the State/Territory/National Guard Bureau as to the accuracy, reliability, or completeness of these data for individual use or aggregate use with other data. This map is a "living document," in that it is intended to change as new data become available and are incorporated into the Enterprise GIS database.



No warranty is made by the State/Territory/National Guard Bureau as to the accuracy, reliability, or completeness of these data for individual use or aggregate use with other data. This map is a "living document," in that it is intended to change as new data become available and are incorporated into the Enterprise GIS database.

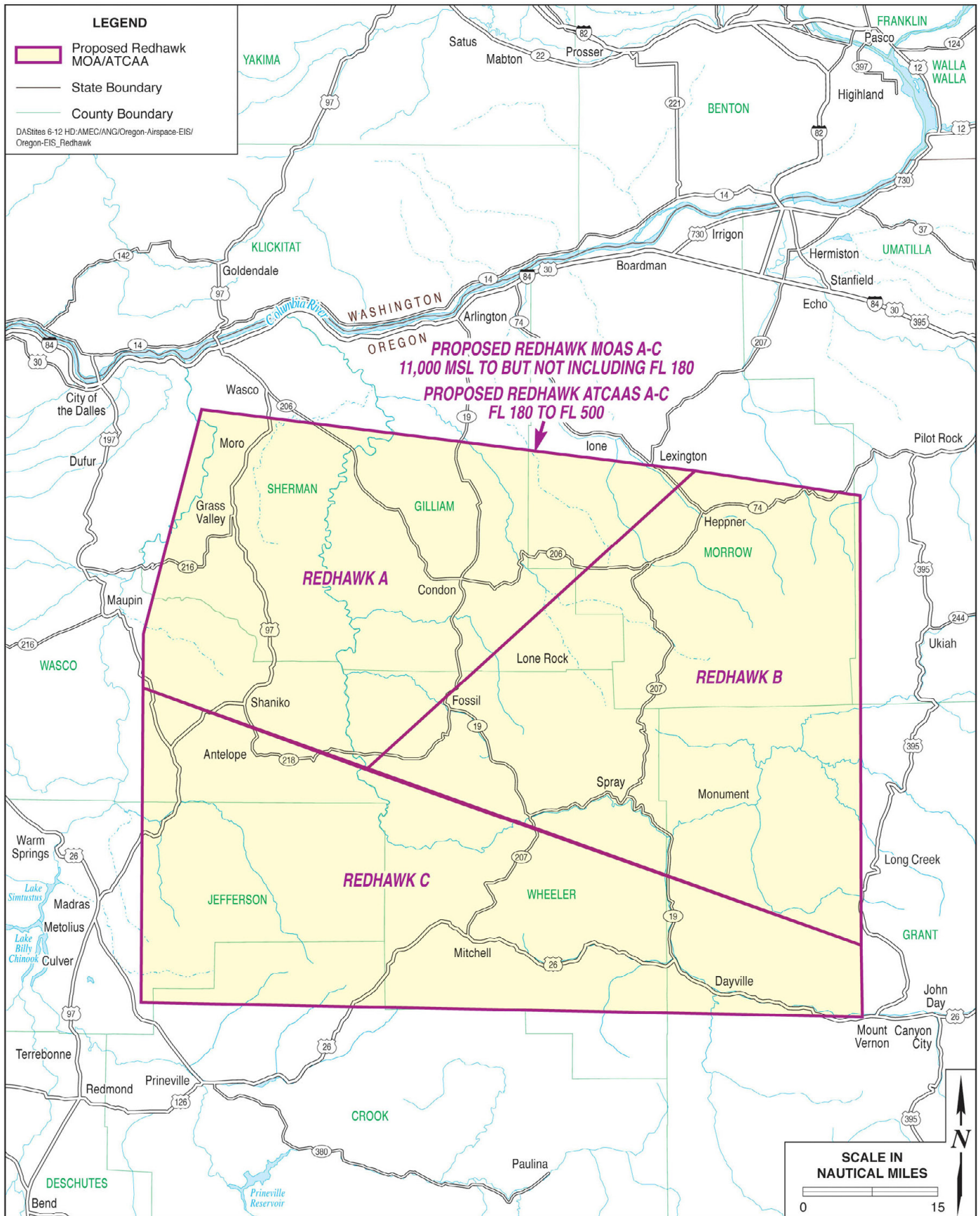


Figure 4
Proposed Redhawk MOAs and ATCAAs
Proposed Airspace Establishment and Modification



No warranty is made by the State/Territory/National Guard Bureau as to the accuracy, reliability, or completeness of these data for individual use or aggregate use with other data. This map is a "living document," in that it is intended to change as new data become available and are incorporated into the Enterprise GIS database.